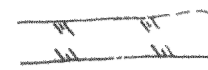



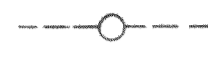


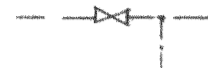

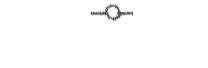
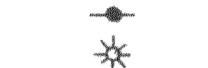

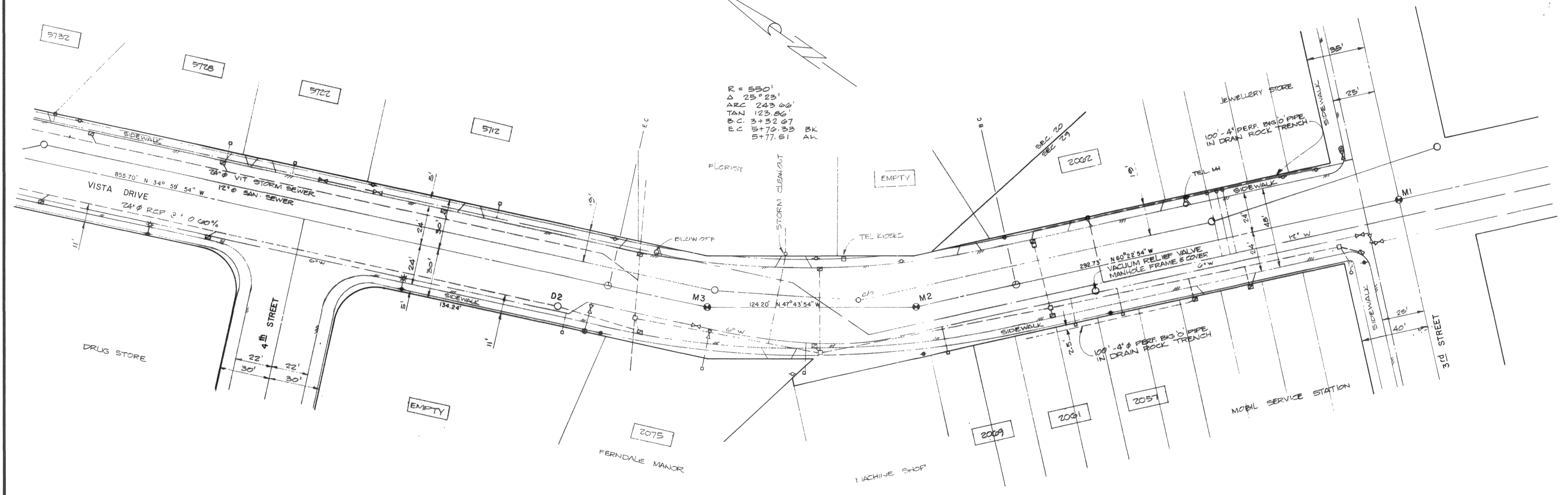
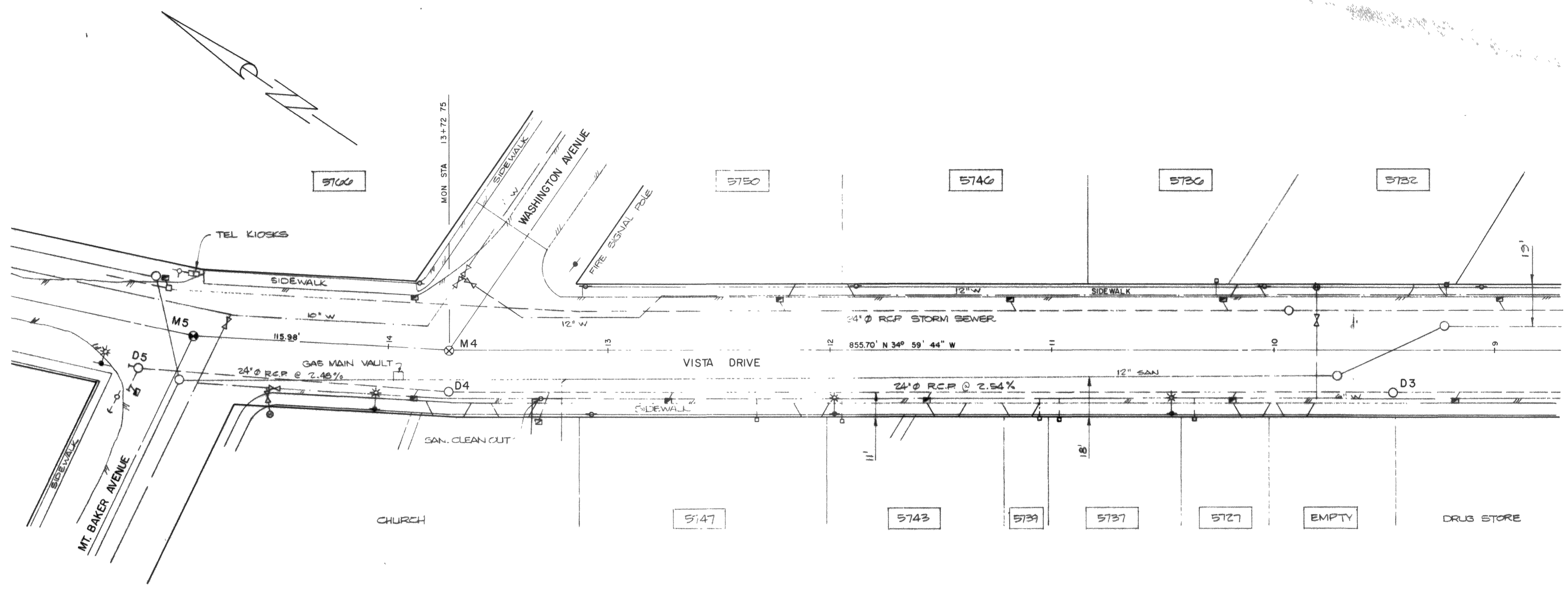


20 40-01-2 10-05 00302-001 100-20800


LEGEND

-  ASPHALT ROADWAY
-  CONSTRUCTION STATIONS
-  SURVEY MONUMENT
-  SANITARY SEWER MANHOLE
-  STORM SEWER MANHOLE
-  STORM SEWER JUNCTION BOX
-  CATCH BASIN
-  WATERMAIN VALVE
-  METERED SERVICE
-  TELEPHONE POLE
-  POWER POLE
-  POWER POLE LIGHTING BRACKET

CONSTRUCTED STORM MANHOLES		
NO	RIM ELEV	INVERT ELEV
D2	100.46	24" Ø 95.43
D3	102.64	24" Ø 97.48
D4	113.60	24" Ø 108.28
D5	116.25	24" Ø 111.90



DATE	REV. NO	REVISION	BY


 consulting engineers and planners
 2nd Floor, 1101, Harris, Bellingham, Washington 98225 (206) 733-3858

CITY OF FERDALE
 URBAN ARTERIAL PROJECT UAB No. 8-2-985 (02)

STREET IMPROVEMENT
VISTA DRIVE
 3RD ST. — MT. BAKER AVENUE

AS BUILT 1981	
PROJECT No 437.1	REV.
DRAWING NO.	

VERTICAL DATA