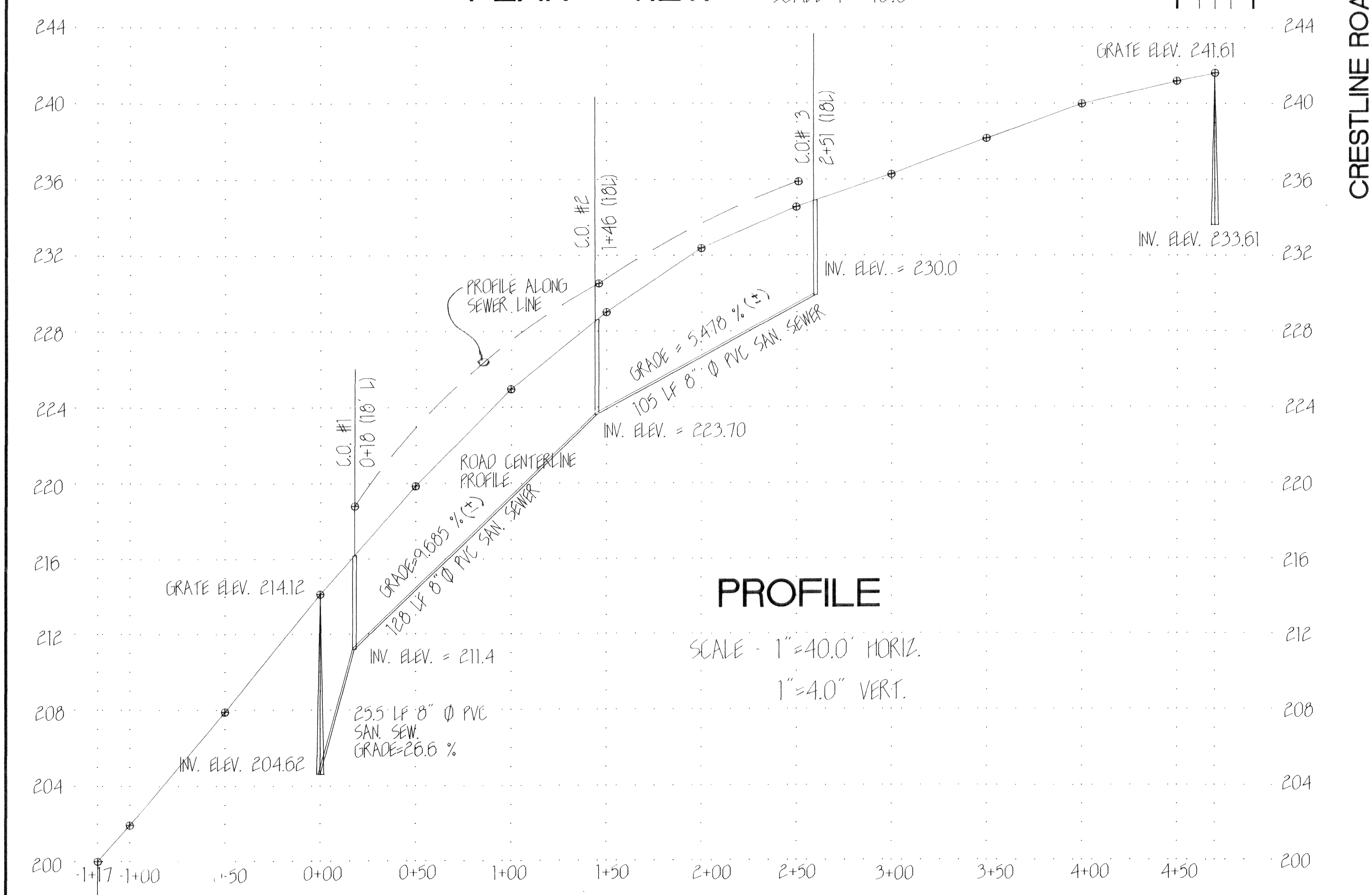


PLAN VIEW SCALE 1"=40.0'



PROFILE SCALE 1"=40.0' HORIZ. 1"=4.0' VERT.

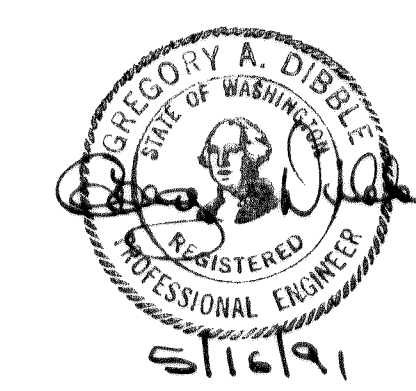
GENERAL NOTES

1. All work and materials shall be done in accordance with 1988 Standard Specifications for Road, Bridge and Municipal Construction by Washington State Department of Transportation and Standard Plans and Specifications provided by the City of Ferndale. All work shall be subject to approval of the Director of Public Works.
2. Contractor shall restore all public and private property disrupted by the project.
3. Contractor shall inform the Engineer of any proposed changes in plan prior to construction of that change. Contractor shall keep record of deviations and forward to Engineer. Engineer will provide City with a certified As-Built mylar at the completion of the street and utility improvements.
4. Contractor shall contact Utilities Coordinating 48 hours in advance of construction (1-800-424-5555).
5. All subgrade embankment and trench backfill including sanitary sewer lines, side sewers, shall be Engineer approved material compacted to a minimum of 95 percent of maximum density as determined by a Modified Proctor Test (ASTM D1559).
6. All locations of utilities shown are approximate. It shall be the responsibility of the contractor to verify the true and correct location.
7. Contractor shall schedule a pre-construction meeting with the Engineer prior to construction of the sanitary sewer system. (Greg Dibble, 100 Central Ave. Bellingham, 734-1288)

SANITARY SEWER SPECIFICATIONS

1. Eight inch sanitary sewer pipe shall be PVC ASTM D3034 SDR 35 with rubber gasket joints meeting ASTM D1839. PVC pipe bedding details shall be in accordance with City of Ferndale Standards.
2. Cleanouts shall be in accordance with City of Ferndale Standard Drawings.
3. Side sewers shall be constructed and marked in accordance with City of Ferndale Standards. Side sewer terminations shall be wired and staked with the depth clearly marked.
4. Contractor shall note any changes in plan of the location of tees and side sewers prior to backfilling trenches. A copy of the revised plan shall be forwarded to the Engineer.

AS BUILT
BY: Greg Dibble
DATE: 9/12/91



GREG DIBBLE, P.E.
CONSULTING ENGINEER
100 CENTRAL AVE. 734-1288
BELLINGHAM, WA 98225

POTTLE CONSTRUCTION		
SCALE: 1"=40'	APPROVED BY:	DRAWN BY: T.F.D.
DATE: 9/9/91		REVISED:
GRANT NELSON D.D.S.		
SIDE SEWER		DRAWING NUMBER 63291

00202.001 2.14.06 KP