

CONSTRUCTION NOTES

- RELOCATE EXISTING FLAGPOLE PER ARCHITECTURAL PLANS. PAVE OVER EXISTING ±860-SF LANDSCAPE AREA WITH ASPHALT PAVING SECTION.
- CONSTRUCT 9' x 67' CONCRETE PAD WITH 6" DEPTH OF CONCRETE OVER 2" CRUSHED ROCK. SEE CONCRETE WALKWAY SECTION DETAIL.
- INSTALL PROPANE TANK AND BACK-UP POWER GENERATOR ASSEMBLY ON 8'x18' CONCRETE SLAB, SEE ARCHITECTURAL AND MECHANICAL PLANS FOR DETAILS AND SPECIFICATIONS.
- INSTALL TRENCH DRAIN, 200 LF TOTAL, ZURN Z886-HPD, WITH TRENCH NO. 8603N, 5.3" INVERT, HPD D.I. HEELPROOF GRATE, CLASS E, H-20 RATED, WITH 6"x20" CATCH BASIN AND 6" END OUTLET. SUBMITTAL TO ENGINEER REQUIRED.
- INSTALL TYPE 1 CATCH BASIN.
- INSTALL OIL/WATER SEPARATOR, UTILITY VAULT CO. MODEL 25-CPS, RATED FOR A TREATMENT FLOW RATE OF 20-GPM AND A MAXIMUM PROCESS FLOW OF 60-GPM. SUBMITTAL TO ENGINEER REQUIRED.
- INSTALL CATCH BASIN INSERT FOR EROSION CONTROL INLET PROTECTION, SEE DETAIL.
- INSTALL 280-LF SILT FENCE ALONG PROPERTY LINE, SEE CITY OF FERNDALE STANDARD.
- REMOVE EXISTING SIDEWALK AND REPLACE WITH NEW CONCRETE SIDEWALK, SEE DETAIL. INSTALL PEDESTRIAN RAMP WHERE SHOWN. PER WSDOT STD PLAN F-40.10-00.
- INSTALL 68 LF BARRIER CURB, SEE DETAIL.
- PRESERVE AND PROTECT EXISTING CURB IN PLACE.
- EXISTING CONCRETE INLET, REMOVE AND DISPOSE OF OFFSITE. INSTALL CATCH BASIN STORM FILTER, FIELD VERIFY DEPTH AND ALIGNMENT OF EXISTING STORM PIPE OUT. SEE DETAIL.
- INSTALL 8" SD S=0.0100. 63 LF TOTAL.
- CLEAN AND SEAL EXISTING CONCRETE. CLEANING SHALL BE DONE BY PRESSURE WASHING. SEALING SHALL BE DONE WITH KRYTOL HYDROSTOP MS" OR APPROVED EQUAL. HORIZONTAL CONCRETE JOINTS ARE TO BE CLEANED AND RESEALED, JOINTS SHALL BE SEALED BY INSTALLING BACKER ROD MFG. "DANVER FOAM" OR EQUAL AND THEN FILLED WITH "SIKAFLEX-2C NS 1C" OR EQUAL. SPECIFICATIONS NEED TO BE SUBMITTED TO THE ENGINEER FOR APPROVAL. APPLICATIONS OF JOINT AND CONCRETE SEALER SHALL BE DONE IN ACCORDANCE WITH MANUFACTURER'S INSTRUCTIONS.
- INSTALL 170 LF LANDSCAPE WALL ALONG PROPERTY LINE SEE DETAIL.
- CONSTRUCT PEDESTRIAN RAMP ACCORDING TO WSDOT STANDARD DRAWING F-40.10-00.
- REMOVE EXISTING SLAB AND REPLACE WITH NEW PER ATTACHED DETAIL.
- LOCATION FOR FIRE DEPARTMENT CONNECTION (FDC). SEE BUILDING MECHANICAL PLANS FOR SIZING, CONFIGURATION, AND COORDINATION WITH SPRINKLER SYSTEM DESIGN.
- INSTALL 6" POST-INDICATOR VALVE (PIV) ASSEMBLY; SIZING, LOCATION, AND TYPE TO BE IN ACCORDANCE WITH THE ARCHITECTURAL AND MECHANICAL PLANS, AND THE APPROVED SPRINKLER SYSTEM DESIGN.
- RELOCATE EXISTING FIRE HYDRANT AS SHOWN. INSTALL 8x8x6" TEE, M&M FL (1) 6" GATE VALVE, FL&M THRUST BLOCKING.
- EXISTING WATER SERVICE METER. CONFIRM SIZE AND CONDITION TO MEET REQUIREMENTS FOR WATER SERVICE AS SHOWN IN MECHANICAL PLANS.
- INSTALL 80 SF CONCRETE SLAB PER ATTACHED DETAIL.
- REMOVE APPROX 165 LF OF EXISTING SHRUB ROW (ARBORVITAE).
- PRESERVE AND PROTECT EXISTING SIDEWALK IN PLACE. CUT SIDEWALK AT JOINT AND TRANSITION SIDEWALK TO FACILITATE ADA ACCESS.
- INSTALL "CROSSWALK AHEAD" SIGN ON EXISTING UTILITY POLE.

CIVIL DESIGN NOTES

- GEOTECHNICAL INVESTIGATION OF SITE SOILS IS REQUIRED PRIOR TO STARTING WORK ON THE SITE. INVESTIGATION SHALL INCLUDE ASSESSMENT OF GROUND WATER TABLE, NATIVE SOIL COMPACTION, AND LOAD BEARING CAPACITY.
- THE GEOTECHNICAL ENGINEER SHALL INSPECT AND APPROVE NATIVE SUBGRADE PRIOR TO PLACEMENT OF GRAVEL BASE.
- ALL STRUCTURAL FILL MATERIALS WITHIN THE PAVING SECTION SHALL BE TESTED FOR COMPACTION AND MATERIAL PROPERTIES BY THE GEOTECHNICAL ENGINEER. THE GEOTECHNICAL ENGINEER SHALL INSPECT AND APPROVE THE SUBGRADE PRIOR TO PAVING.
- PRIOR TO CONSTRUCTION A BOUNDARY AND UTILITY LOCATION SURVEY WILL BE REQUIRED TO VERIFY BUILDING LOCATIONS, PROPERTY LINES, EASEMENTS, UTILITIES, AND OTHER SIGNIFICANT SITE FEATURES. THE LOCATION AND DEPTH OF ALL UNDERGROUND UTILITIES SHALL BE FIELD VERIFIED BY THE CONTRACTOR, SEE GENERAL NOTES #7 AND #8.

GENERAL NOTES:

- PRIOR TO STARTING CONSTRUCTION THE CONTRACTOR SHALL BE RESPONSIBLE TO MAKE SURE THAT ALL REQUIRED PERMITS AND APPROVALS HAVE BEEN OBTAINED. NO CONSTRUCTION OR FABRICATION SHALL BEGIN UNTIL THE CONTRACTOR HAS RECEIVED AND THOROUGHLY REVIEWED ALL PLANS AND OTHER DOCUMENTS APPROVED BY ALL OF THE PERMITTING AUTHORITIES.
- ALL WORK AND MATERIALS SHALL BE IN ACCORDANCE WITH THESE PLANS AND THE CURRENT WSDOT STANDARD SPECIFICATIONS AND THE CITY OF FERNDALE DEVELOPMENT STANDARDS, AND SHALL BE SUBJECT TO APPROVAL BY THE CITY OF FERNDALE PUBLIC WORKS DEPARTMENT ENGINEERING DIVISION.
- THE CONTRACTOR SHALL CONTACT UTILITY LOCATE SERVICE 48 HOURS PRIOR TO STARTING CONSTRUCTION AT 1-800-424-5555.
- ALL TESTING REQUIRED FOR THE IMPROVEMENTS SHALL BE THE RESPONSIBILITY OF THE OWNER AND SHALL BE IN CONFORMANCE WITH CITY OF FERNDALE DEVELOPMENT STANDARDS AND THE WSDOT STANDARD SPECIFICATIONS.
- CONTRACTOR SHALL RESTORE ALL PRIVATE AND PUBLIC PROPERTY DISRUPTED BY THE PROJECT IMMEDIATELY AFTER CONSTRUCTION.
- ALL CUT AND FILL SLOPES SHALL BE SEEDDED FOR EROSION CONTROL. THE CONTRACTOR SHALL BE RESPONSIBLE FOR SLOPE EROSION UNTIL VEGETATION IS FIRMLY ESTABLISHED.
- CONTRACTOR SHALL SWEEP AND REMOVE ALL DEBRIS TRACKED ONTO EXISTING ROADS DURING ALL PHASES OF CONSTRUCTION.
- CONTRACTOR SHALL INFORM THE ENGINEER AND OBTAIN APPROVAL OF THE CITY OF FERNDALE ENGINEERING DEPARTMENT OF ANY PROPOSED CHANGES IN PLAN PRIOR TO CONSTRUCTION OF THAT CHANGE. CONTRACTOR SHALL KEEP A DETAILED RECORD OF DEVIATIONS AND FORWARD TO THE ENGINEER.
- THE LOCATIONS OF UNDERGROUND FACILITIES SHOWN ON THESE PLANS ARE BASED ON FIELD SURVEYS AND LOCAL UTILITY COMPANY RECORDS. IT SHALL BE THE CONTRACTOR'S FULL RESPONSIBILITY TO CONTACT THE VARIOUS UTILITY COMPANIES TO LOCATE THEIR FACILITIES PRIOR TO STARTING CONSTRUCTION. NO ADDITIONAL COMPENSATION SHALL BE PAID TO THE CONTRACTOR FOR DAMAGE AND REPAIR TO THESE FACILITIES CAUSED BY HIS WORK FORCE. CALL 1-800-424-5555.
- ALL DIMENSIONS AND GRADES SHOWN ON THE PLANS SHALL BE FIELD VERIFIED BY THE CONTRACTOR PRIOR TO CONSTRUCTION. CONTRACTOR SHALL NOTIFY THE ENGINEER IF ANY DISCREPANCIES EXIST PRIOR TO PROCEEDING WITH CONSTRUCTION OF NECESSARY PLAN OR GRADE CHANGES. NO EXTRA COMPENSATION SHALL BE PAID TO THE CONTRACTOR FOR WORK HAVING TO BE REDONE DUE TO DIMENSIONS OR GRADES SHOWN INCORRECTLY ON THESE PLANS IF SUCH NOTIFICATION HAS NOT BEEN GIVEN.
- A COPY OF THE APPROVED PLANS AND ALL REQUIRED PERMITS MUST BE ON THE JOB SITE WHENEVER CONSTRUCTION IS IN PROGRESS.

PAVING NOTES:

- PAVING
- SUBGRADE SHALL BE INSPECTED AND APPROVED BY A GEOTECHNICAL ENGINEER PRIOR TO PAVING.
- GRAVEL BASE COURSE SHALL BE INSTALLED PER WSDOT SECTION 4-02, WITH GRAVEL BASE MATERIAL CONFORMING TO WSDOT SECTION 9-03.10.
- CRUSHED ROCK SHALL BE INSTALLED PER WSDOT SECTION 4-04, WITH MATERIAL CONFORMING TO WSDOT SECTION 9-03.9(3).
- ASPHALT PAVEMENT SHALL BE IN ACCORDANCE WITH WSDOT SECTION 5-04.

STORM NOTES:

- DRAINAGE PIPE SHALL BE IN ACCORDANCE WITH SECTION 7-01 OF THE WSDOT STANDARD SPECIFICATIONS. DRAIN PIPE MATERIALS SHALL BE CORRUGATED POLYETHYLENE (PE) DRAIN PIPE IN ACCORDANCE WITH WSDOT 9-05.1(6) AND 9-05.1(7). ANY DRAIN PIPE MATERIAL SUBSTITUTIONS MUST BE APPROVED BY THE ENGINEER AND THE CITY OF FERNDALE ENGINEERING DEPARTMENT.

EROSION CONTROL NOTES:

- THE IMPLEMENTATION OF THE EROSION CONTROL PLAN AND THE CONSTRUCTION, MAINTENANCE, REPLACEMENT, AND UPGRADING OF EROSION CONTROL FACILITIES IS THE RESPONSIBILITY OF THE CONTRACTOR UNTIL ALL CONSTRUCTION IS COMPLETED AND APPROVED AND VEGETATION IS ESTABLISHED.
- THE EROSION CONTROL FACILITIES SHOWN ON THIS PLAN MUST BE CONSTRUCTED IN CONJUNCTION WITH ALL LAND DISTURBING ACTIVITIES, AND IN SUCH A MANNER AS TO INSURE THAT SEDIMENT AND SEDIMENT LADEN WATER DO NOT ENTER THE DRAINAGE SYSTEM, ROADWAYS, OR VIOLATE APPLICABLE WATER STANDARDS. THE EROSION CONTROL FACILITIES SHOWN ON THIS PLAN ARE THE MINIMUM REQUIREMENTS FOR ANTICIPATED SITE CONDITIONS, DURING THE CONSTRUCTION PERIOD, THESE EROSION CONTROL FACILITIES SHALL BE UPGRADED AS NEEDED FOR UNEXPECTED STORM EVENTS AND TO ENSURE THAT SEDIMENT AND SEDIMENT LADEN WATER DO NOT LEAVE THE SITE.
- THE EROSION CONTROL FACILITIES SHALL BE INSPECTED DAILY BY THE CONTRACTOR AND MAINTAINED AS NECESSARY TO ENSURE THEIR CONTINUED FUNCTIONING. THE EROSION CONTROL FACILITIES ON INACTIVE PORTIONS OF THE SITE SHALL BE INSPECTED AND MAINTAINED A MINIMUM OF ONCE PER MONTH OR WITHIN 48 HOURS FOLLOWING A MAJOR STORM EVENT. IF AT ANY TIME IT IS DETERMINED THAT THE OBJECTIVES OF THE TEMPORARY EROSION AND SEDIMENTATION CONTROL PLAN ARE NOT BEING MET, ADDITIONAL DEPARTMENT OF ECOLOGY BEST MANAGEMENT PRACTICES MAY BE REQUIRED.
- ALL EROSION CONTROL MEASURES AND FACILITIES ARE TO BE IN PLACE PRIOR TO THE COMMENCEMENT OF CONSTRUCTION.
- ALL DISTURBED AREAS OR EXPOSED SOILS SHALL BE COVERED WITH MULCH OR WOOD CHIPS IF SOILS ARE TO REMAIN UNWORKED FOR MORE THAN 2 DAYS, OCTOBER 1 THROUGH APRIL 30, OR 7 DAYS, MAY 1 THROUGH SEPTEMBER 30. UPON COMPLETION OF CONSTRUCTION, ALL DISTURBED AREAS AND CUT/FILL SLOPES ARE TO BE SEEDDED WITH THE FOLLOWING EROSION CONTROL SEED MIXTURE:
75-80% TALL FESCUE
10-15% SEASIDE/COLONIAL BENTGRASS
5-10% REDTOP

CONTRACTOR SHALL BE RESPONSIBLE FOR VEGETATION UNTIL IT IS FULLY ESTABLISHED, AS APPROVED BY THE ENGINEER.

- ANY TEMPORARY DITCHES OR DIVERSIONS OF WATER SHALL BE ROUTED THROUGH STILLING POOLS AND PROVIDED WITH PEA GRAVEL OR STRAW BALE CHECK DAMS AT A MAXIMUM SPACING OF 50' O.C.
- EXISTING CATCH BASINS ACCEPTING RUNOFF FROM THE SITE AND DRAINAGE INLETS PLACED INTO SERVICE PRIOR TO FULL SITE STABILIZATION SHALL BE PROTECTED WITH CATCH BASIN INSERTS OR OTHER APPROVED INLET PROTECTION AS REQUIRED.

- ALL SAWCUTTING AND SURFACING SHALL BE PERFORMED IN ACCORDANCE WITH DEPARTMENT OF ECOLOGY BMP C152. SLURRY AND CUTTINGS SHALL BE WASHED OUT OF THE TRUCK AND PUMP SHALL BE RETURNED TO THE ORIGINATING BATCH PLANT FOR RECYCLING. HAND TOOLS SHALL BE WASHED OFF ONLY INTO FORMED AREAS AWAITING INSTALLATION OF CONCRETE OR ASPHALT. WASHDOWN FROM ANY AREAS SHALL NOT DRAIN DIRECTLY TO NATURAL OR CONSTRUCTED STORMWATER CONVEYANCES. WHEN NO FORMED AREAS ARE AVAILABLE, WASHWATER AND LEFTOVER PRODUCT SHALL BE CONTAINED IN A LINED CONTAINER AND DISPOSED OF IN A MANNER THAT DOES NOT VIOLATE GROUNDWATER OR SURFACE WATER QUALITY STANDARDS.
- ALL CONCRETE WORK SHALL BE PERFORMED IN ACCORDANCE WITH DEPARTMENT OF ECOLOGY BMP C151. CONCRETE TRUCK CHUTES, PUMPS, AND INTERVALS SHALL BE WASHED OUT INTO FORMED AREAS AWAITING INSTALLATION OF CONCRETE OR ASPHALT. UNUSED CONCRETE REMAINING IN THE TRUCK AND PUMP SHALL BE RETURNED TO THE ORIGINATING BATCH PLANT FOR RECYCLING. HAND TOOLS SHALL BE WASHED OFF ONLY INTO FORMED AREAS AWAITING INSTALLATION OF CONCRETE OR ASPHALT. WASHDOWN FROM ANY AREAS SHALL NOT DRAIN DIRECTLY TO NATURAL OR CONSTRUCTED STORMWATER CONVEYANCES. WHEN NO FORMED AREAS ARE AVAILABLE, WASHWATER AND LEFTOVER PRODUCT SHALL BE CONTAINED IN A LINED CONTAINER AND DISPOSED OF IN A MANNER THAT DOES NOT VIOLATE GROUNDWATER OR SURFACE WATER QUALITY STANDARDS.

ENGINEER'S CERTIFICATION

I HEREBY CERTIFY THAT THE IMPROVEMENTS IN WHATCOM COUNTY FIRE DISTRICT #7 STATION 1 REMODEL HAVE BEEN INSPECTED BY THE CITY OF FERNDALE AND TO THE BEST OF MY KNOWLEDGE, HAVE BEEN CONSTRUCTED IN CONFORMANCE WITH THE CITY OF FERNDALE DEVELOPMENT STANDARDS, THE CITY OF FERNDALE MUNICIPAL CODE, SUBSEQUENT STANDARDS ADOPTED BY REFERENCE THEREIN, AND STANDARD ENGINEERING PRACTICE.

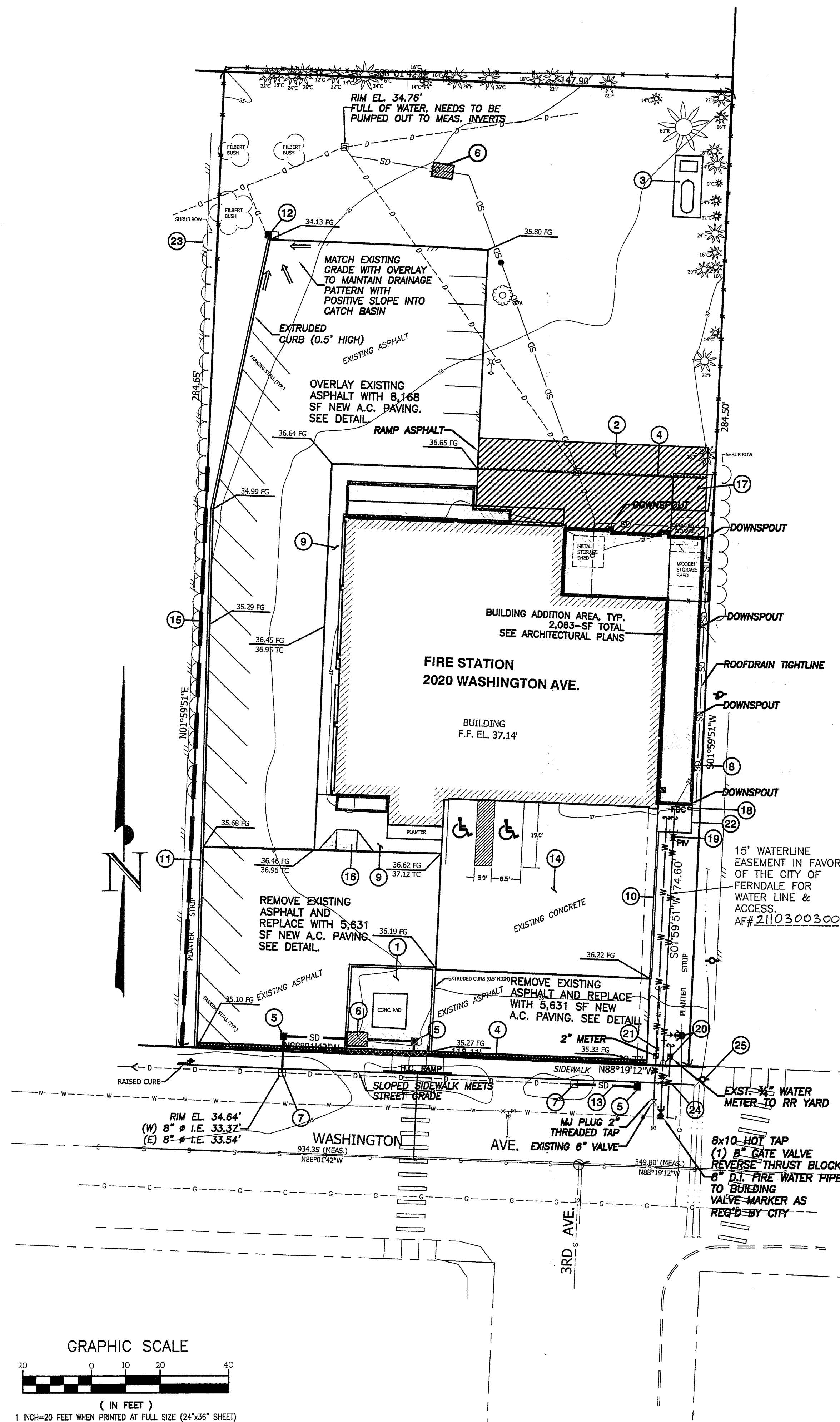
Douglas N. Campbell, P.E.
DOUGLAS N. CAMPBELL, P.E.
PRINCIPAL

DATE
MAR 29, 10

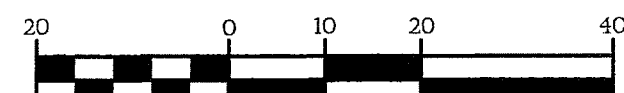
APPROVED
APR 01 2011
BY *[Signature]*
CITY OF FERNDALE

CITY OF FERNDALE
PROJECT #DE-2008-09

AS-BUILT



GRAPHIC SCALE

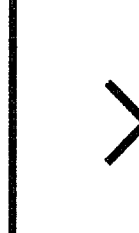


(IN FEET)

1 INCH=20 FEET WHEN PRINTED AT FULL SIZE (24"x36" SHEET)

REVISION:	DRAWN BY:	DATE:	CHECKED BY:	DATE:
1				
2				
3				
4				

ASSOCIATED PROJECT CONSULTANTS, INC., P.S.
CIVIL ENGINEERS, PROJECT AND LAND USE MANAGEMENT,
BUILDING, STRUCTURAL, AND ENVIRONMENTAL SERVICES
1401 ASTOR STREET, BELLINGHAM, WA. 98225
PHONE (360) 671-1146 FAX (360) 671-1169



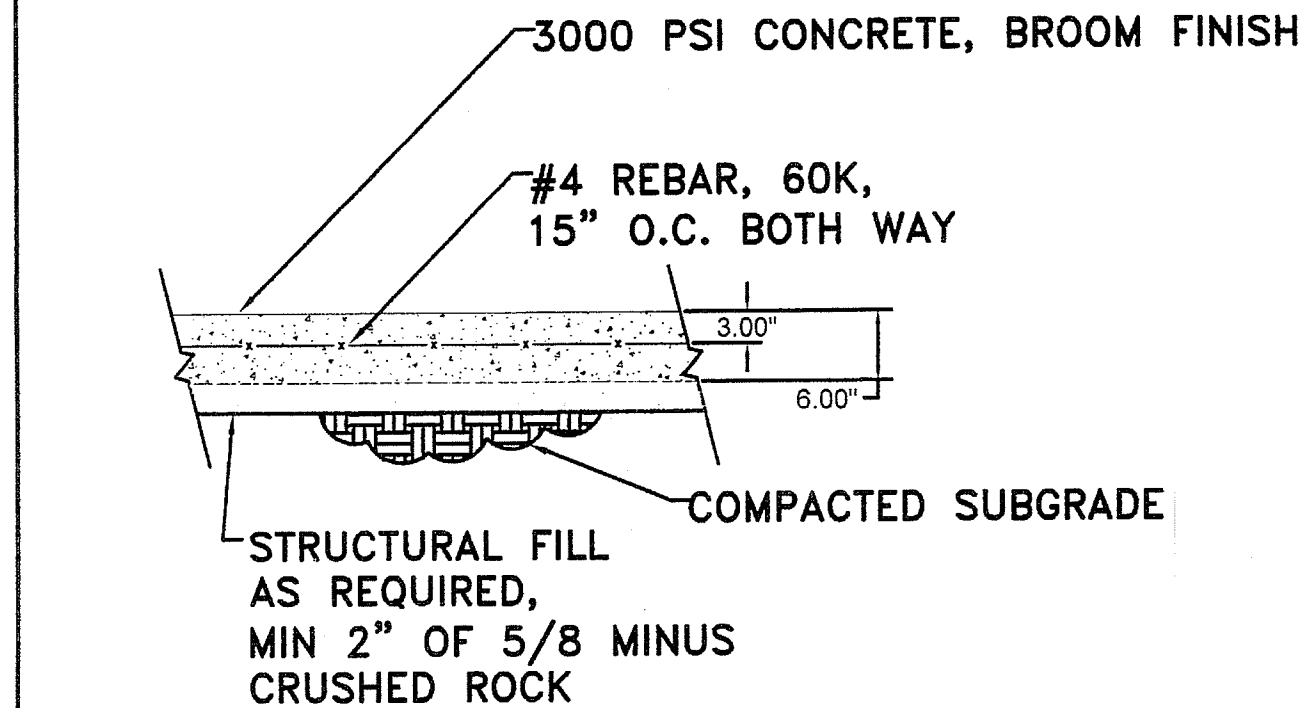
A.P.C.
INCORPORATED

HORIZONTAL SCALE:
1"=20'

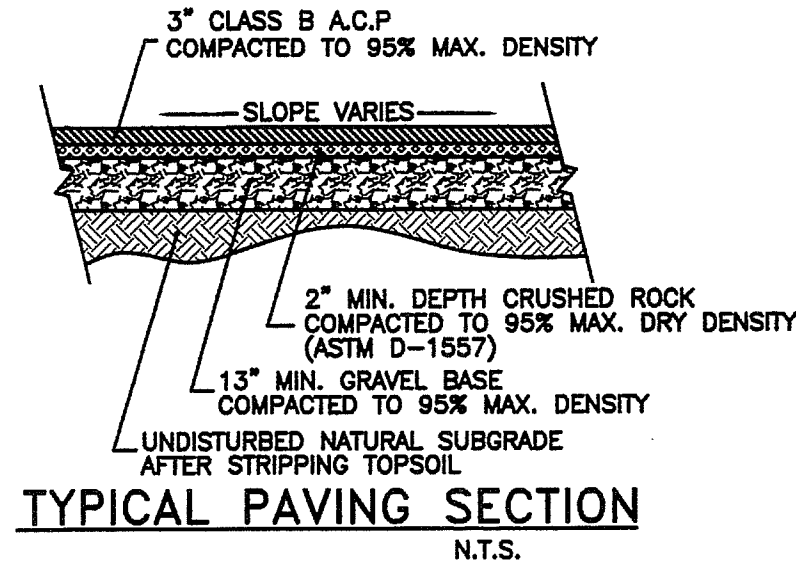
VERTICAL SCALE:
AS NOTED
DATE: 02/09/09
APPROVED BY:
AS NOTED
NORTH ARROW:
& BASE POINT:

WHATCOM COUNTY FIRE DISTRICT #7
STATION 1 REMODEL
CIVIL SITE PLAN - AS BUILT

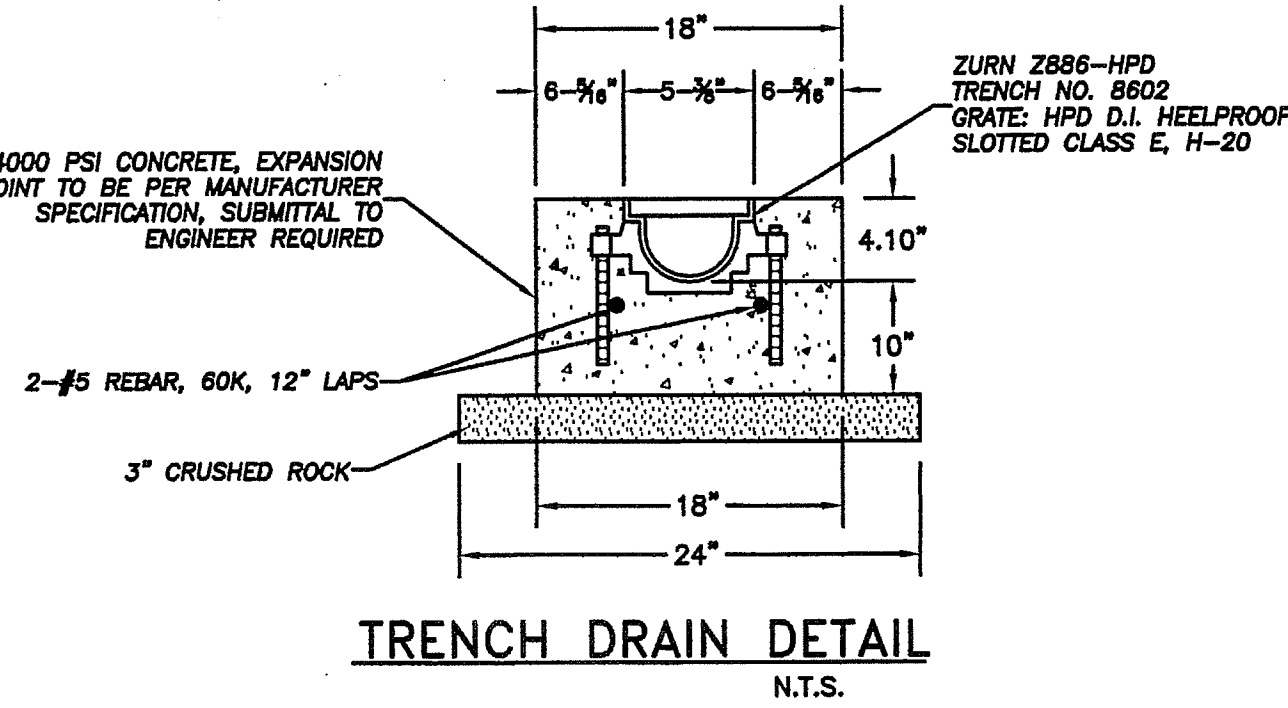
CITY OF FERNDALE
PROJECT #DE-2008-09
AS-BUILT



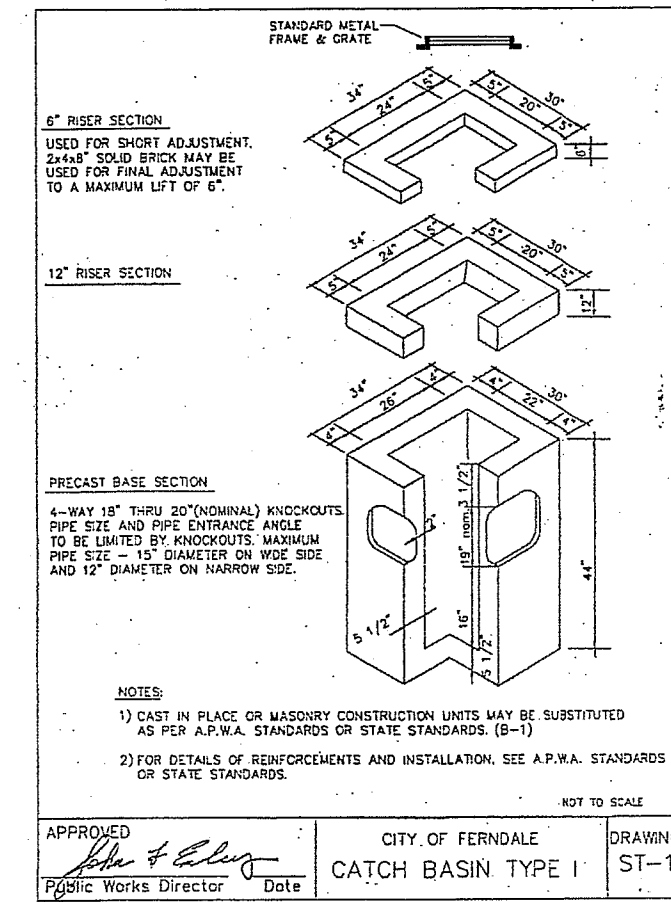
TYPICAL CONCRETE WALKWAY SECTION
N.T.S.



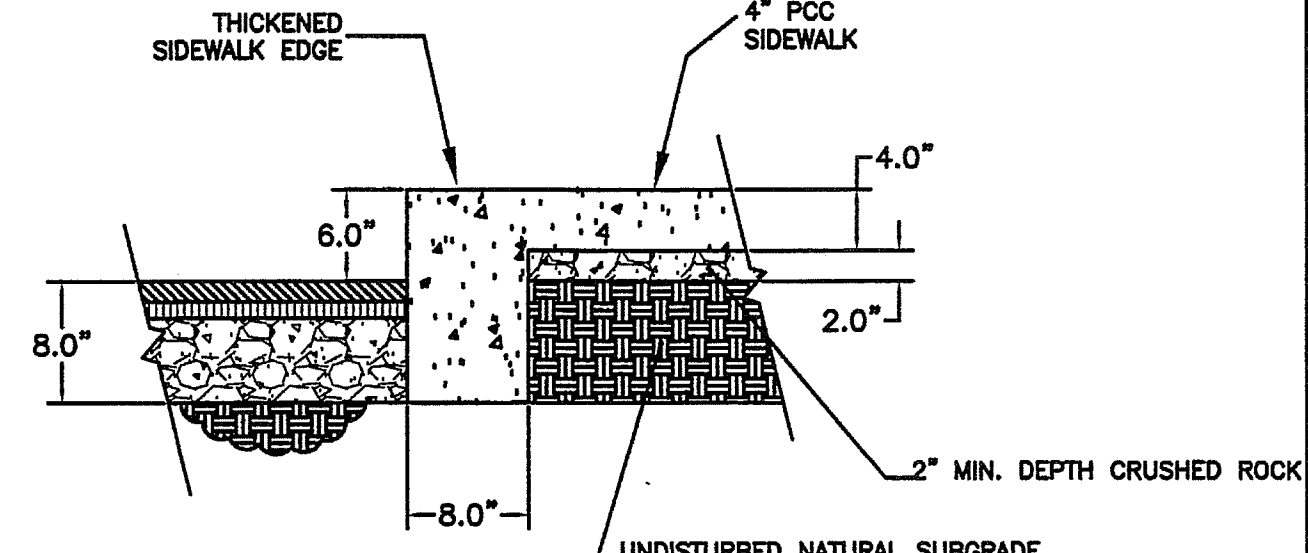
TYPICAL PAVING SECTION
N.T.S.



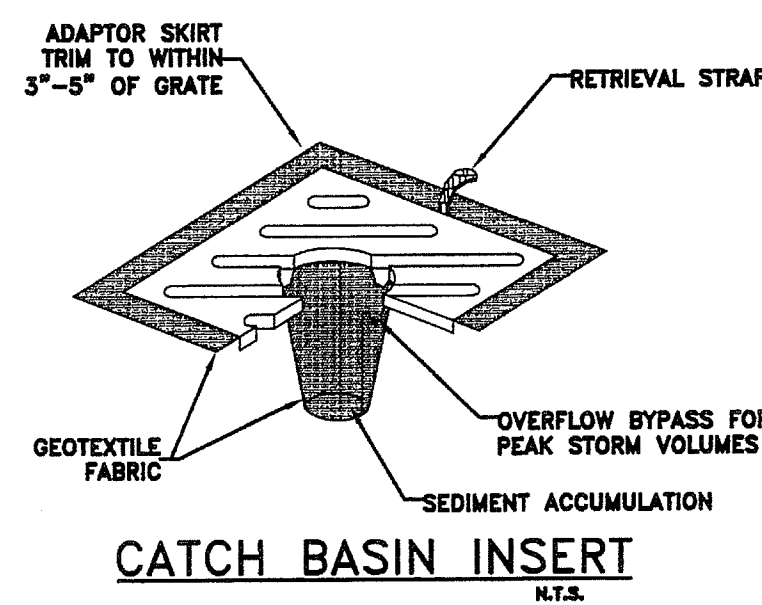
TRENCH DRAIN DETAIL
N.T.S.



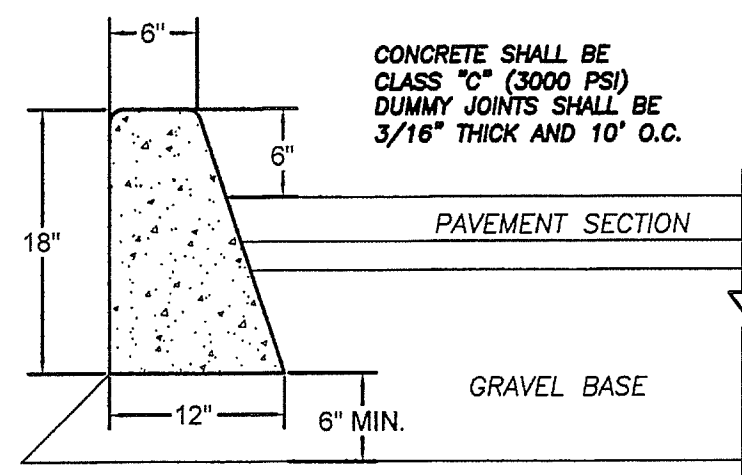
TYPICAL SIDEWALK PLAN VIEW
N.T.S.



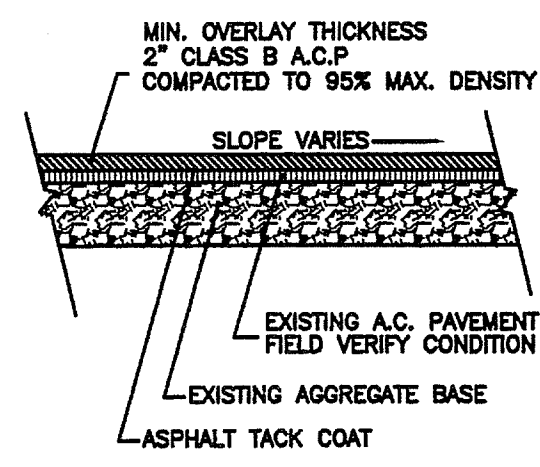
TYPICAL CURB/SIDEWALK SECTION A-A
N.T.S.



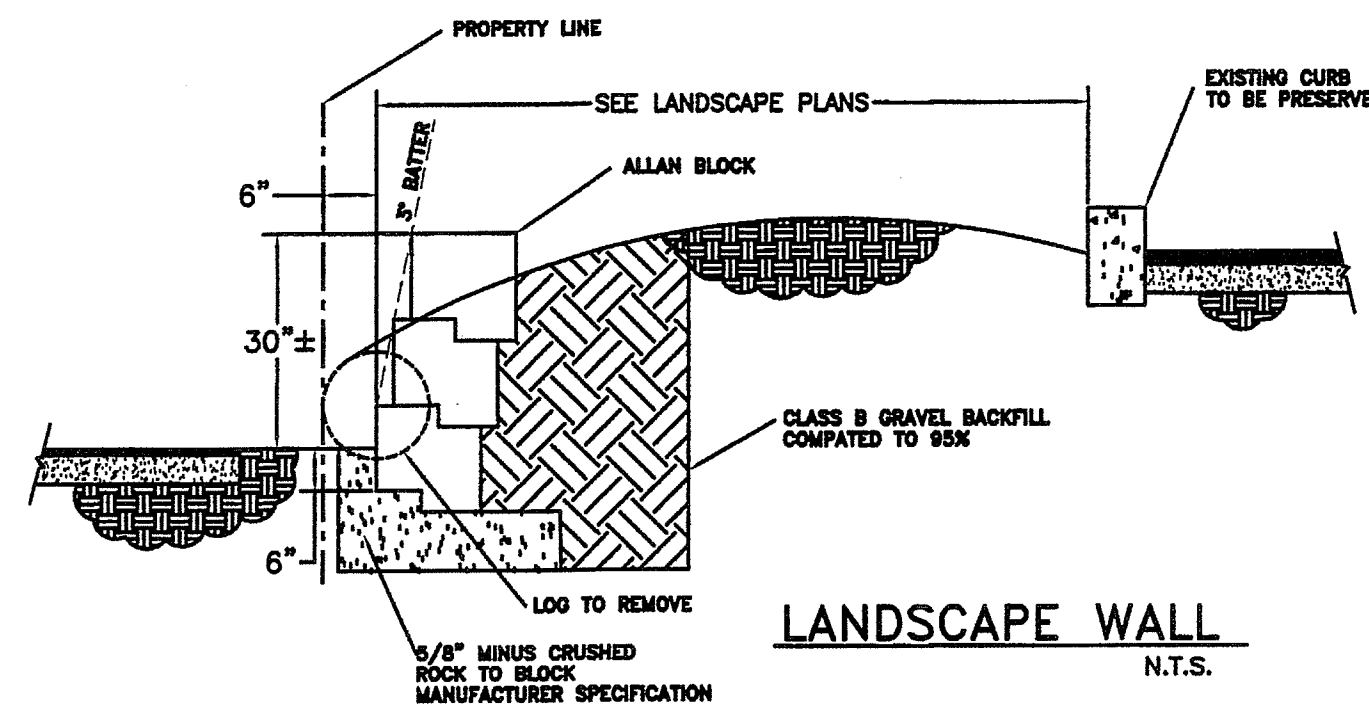
CATCH BASIN INSERT
N.T.S.



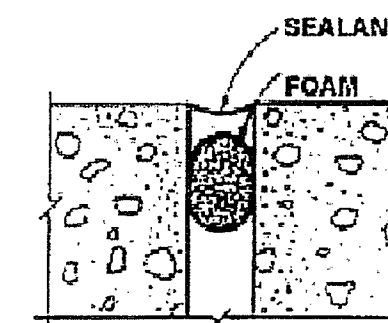
BARRIER CURB DETAIL



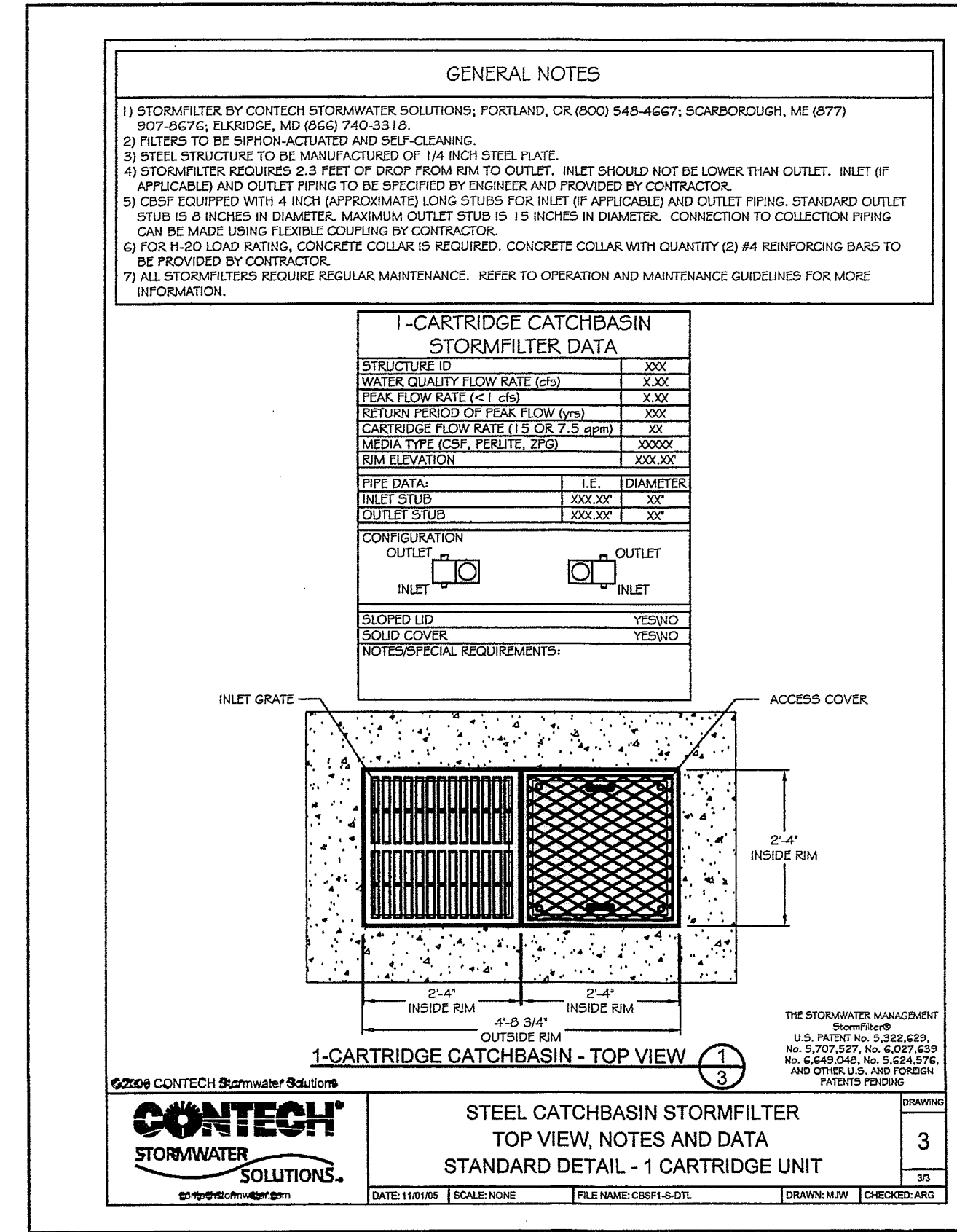
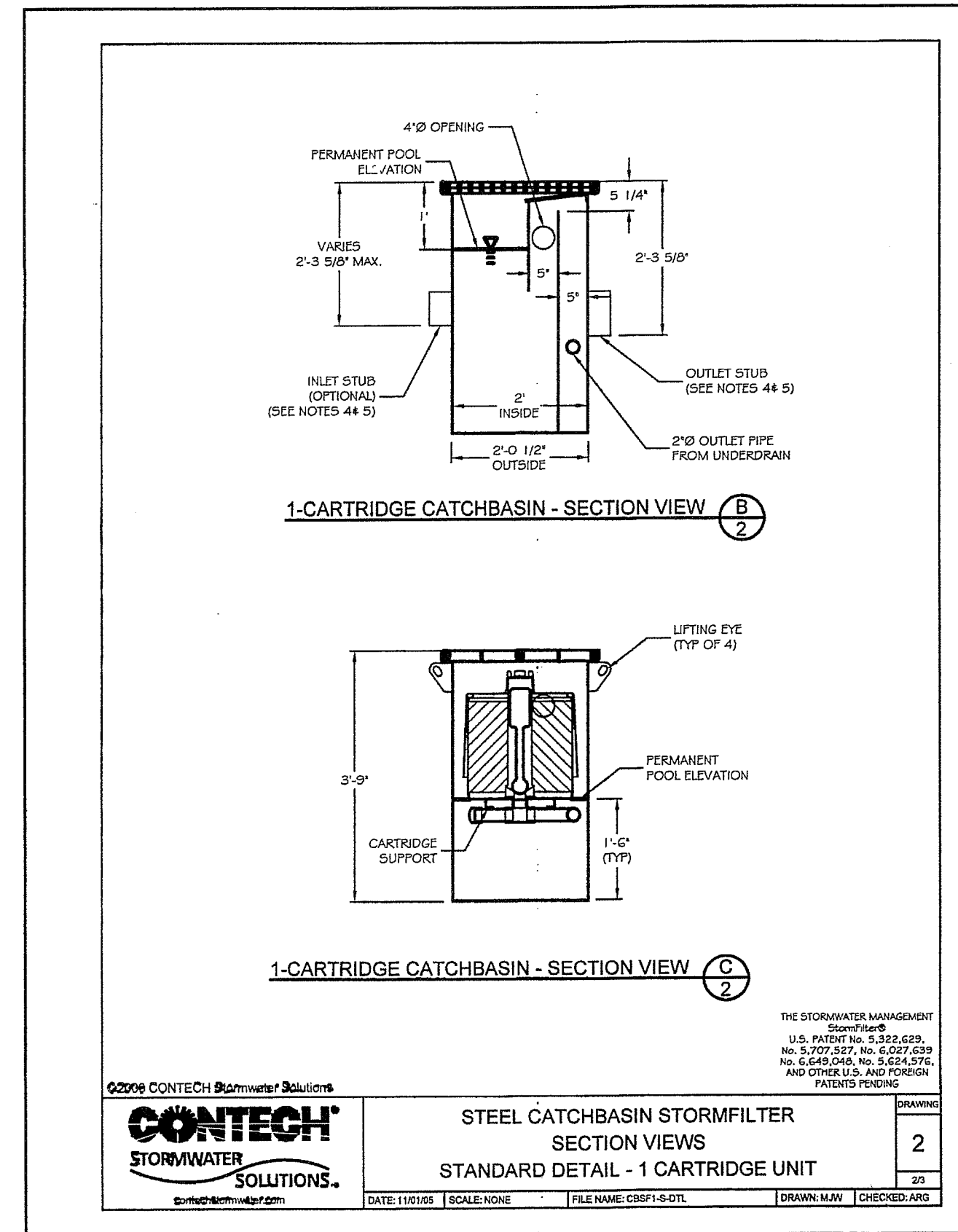
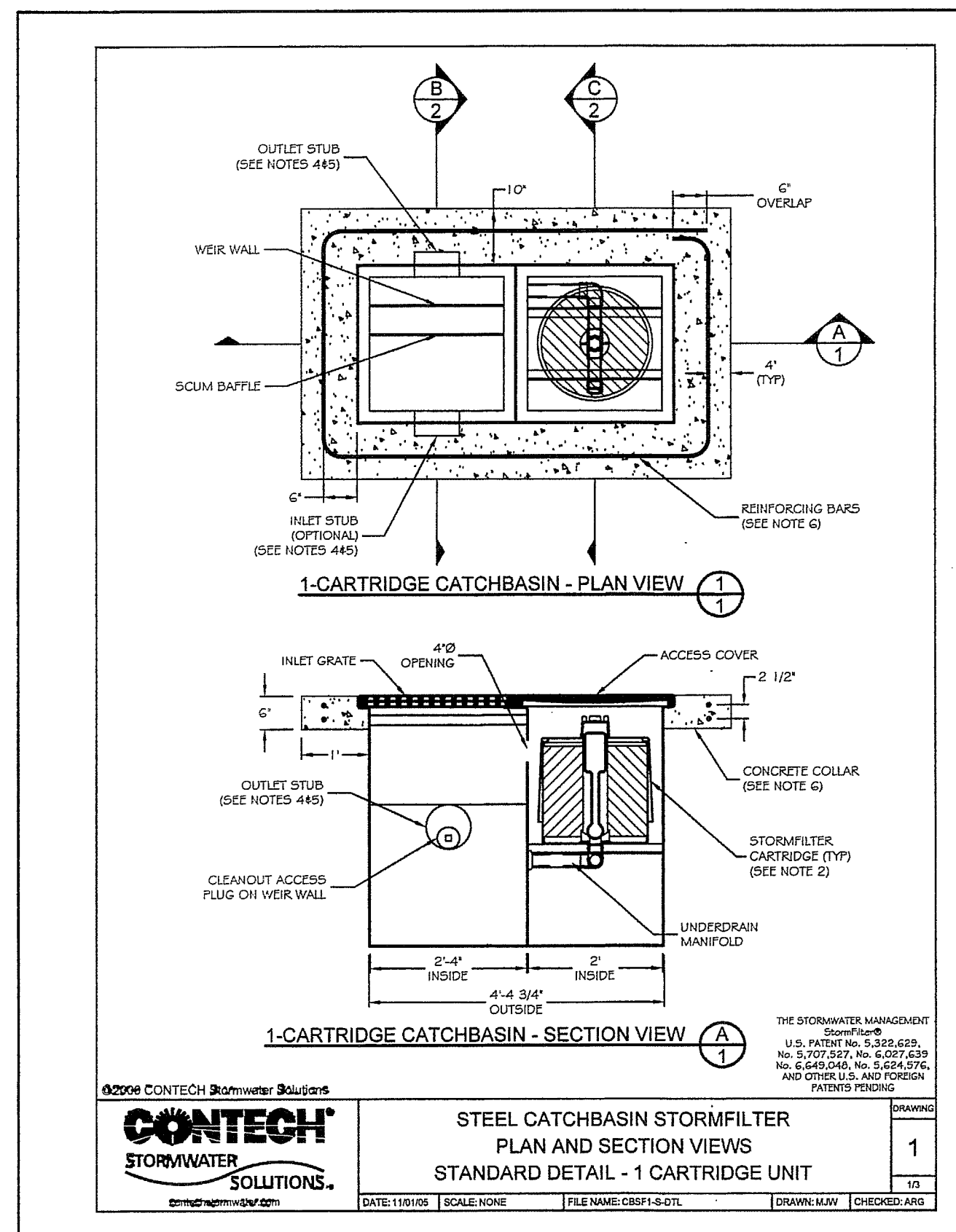
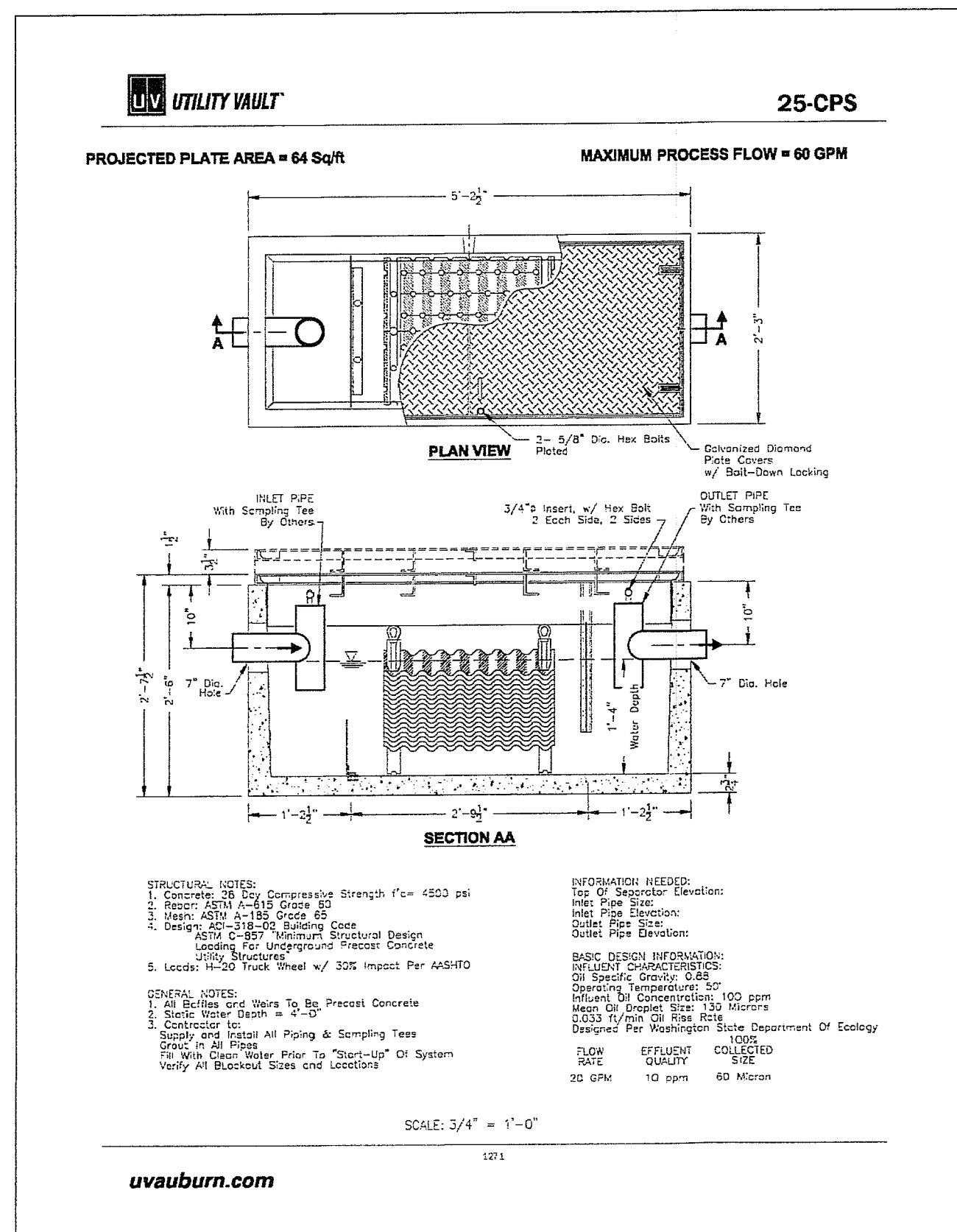
TYPICAL OVERLAY SECTION
N.T.S.



LANDSCAPE WALL
N.T.S.



BACKER ROD INSTALLATION DETAIL
N.T.S.



REVISION:	DRAWN BY:	DATE:	CHECKED BY:	DATE:
1				
2				
3				
4				

ASSOCIATED PROJECT CONSULTANTS, INC., P.S.
 CIVIL ENGINEERS, PROJECT AND LAND USE MANAGEMENT,
 BUILDING, STRUCTURAL, AND ENVIRONMENTAL SERVICES
 1401 ASTOR STREET, BELLINGHAM, WA. 98225
 PHONE (360) 671-1146 FAX (360) 671-1169

WHATCOM COUNTY FIRE DISTRICT #7

STATION 1 REMODEL

CIVIL PLAN DETAILS

CLIENT: 06-124A
 ACAD FILE: CIVIL A4

PROJECT: C2

TITLE: 3

CITY OF FERDALE
 PROJECT #DE-2008-09
AS-BUILT

- LEGEND**
- FOUND CONC. MON. W/ BRASS DISK
 - ▲ FOUND NAIL/SHINER (LS #18927)
 - FOUND SURVEY MARKER (AS NOTED)
 - SET 1/2" REBAR/CAP (LS #18897)
 - SANITARY SEWER MANHOLE
 - × MISC. UTILITY (AS NOTED)
 - ✱ TREE LABELED W/ INCH DIA. & SPECIES (C=CEDAR, F=FIR, P=PINE, R=REDWOOD)
 - EDGE OF PAVEMENT
 - STORM CATCH BASIN
 - ⚡ POWER POLE
 - ⚡ LIGHT STANDARD
 - COMMUNICATIONS PEDESTAL
 - ↑ SIGN POST
 - GAS METER
 - ⌵ WATER VALVE
 - ⌵ WATER METER
 - ⌵ FIRE HYDRANT
 - GAS — GAS LINE
 - W — WATER LINE
 - COMMUNICATIONS LINE

LEGAL DESCRIPTION

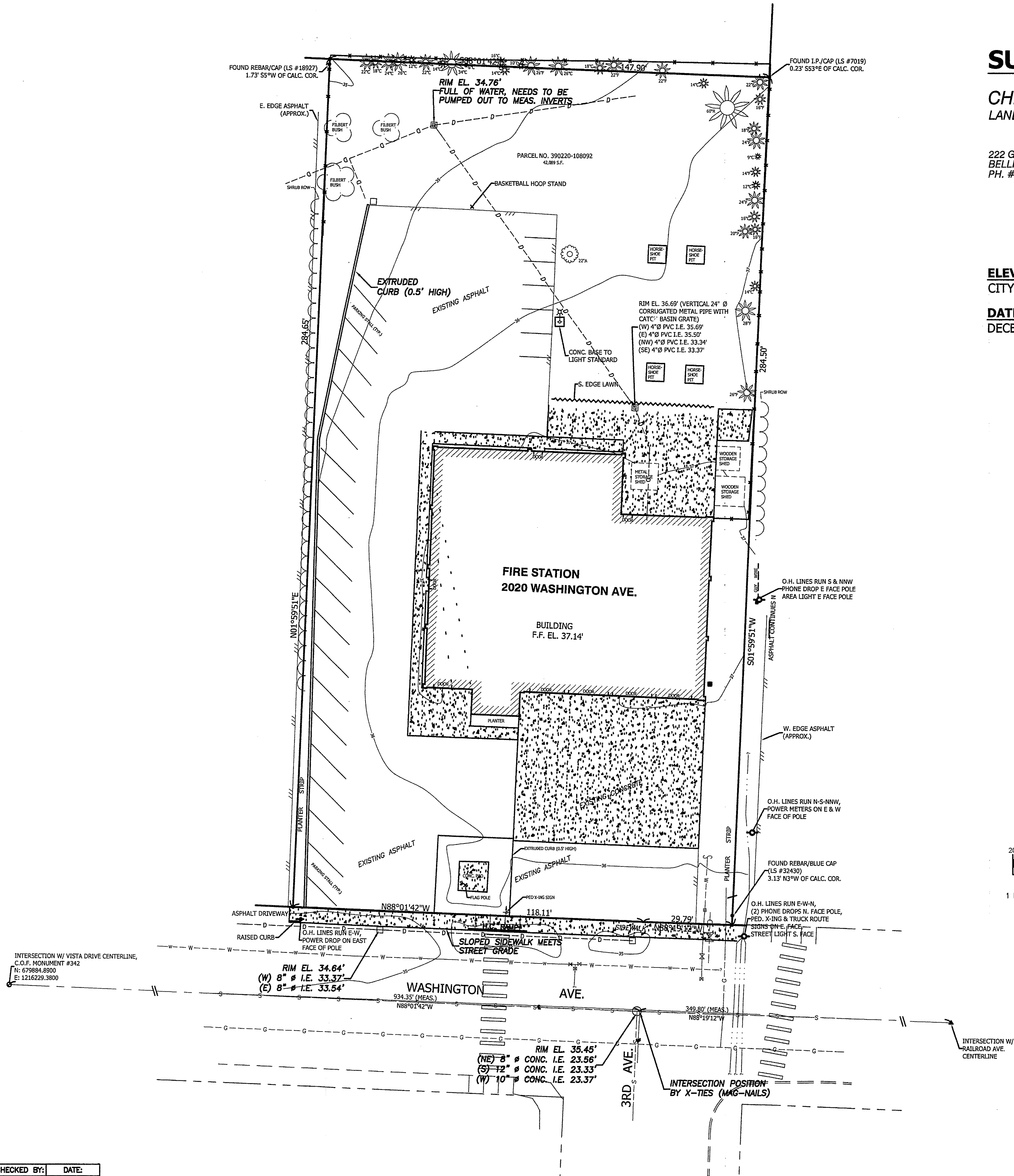
A TRACT OF LAND IN THE SOUTHWEST QUARTER OF THE SOUTHWEST QUARTER OF SECTION 20, TOWNSHIP 39 NORTH, RANGE 2 EAST OF W.M., DESCRIBED AS FOLLOWS:
BEGINNING AT A POINT 30 FEET NORTH OF THE CENTER LINE OF WASHINGTON AVE. (FORMERLY DEPOT AVE.); ON THE WEST SIDE OF THE GREAT NORTHERN RAILROAD RIGHT-OF-WAY IN THE SOUTHWEST QUARTER OF THE SOUTHWEST QUARTER OF SAID SECTION 20; THENCE NORTH ALONG SAID RIGHT-OF-WAY 284.5 FEET; THENCE WEST 147.9 FEET; THENCE SOUTH 284.5 FEET; THENCE EAST 147.9 FEET TO THE POINT OF BEGINNING. LESS ROADS.

BASIS OF BEARINGS

WASHINGTON AVENUE S88°01'42"E AS PER RECORD OF SURVEY FILED UNDER WHATCOM COUNTY AUDITOR'S FILE NO. 1414892.

PLEASE NOTE THAT THIS DRAWING HAS BEEN ROTATED AND TRANSLATED TO CONFORM TO CITY OF FERNDAL DATUM, BUT GRAPHICALLY SHOWS BEARINGS PER ABOVE BASIS OF BEARING.

REVISION:	DRAWN BY:	DATE:	CHECKED BY:	DATE:
1				
2				
3				
4				



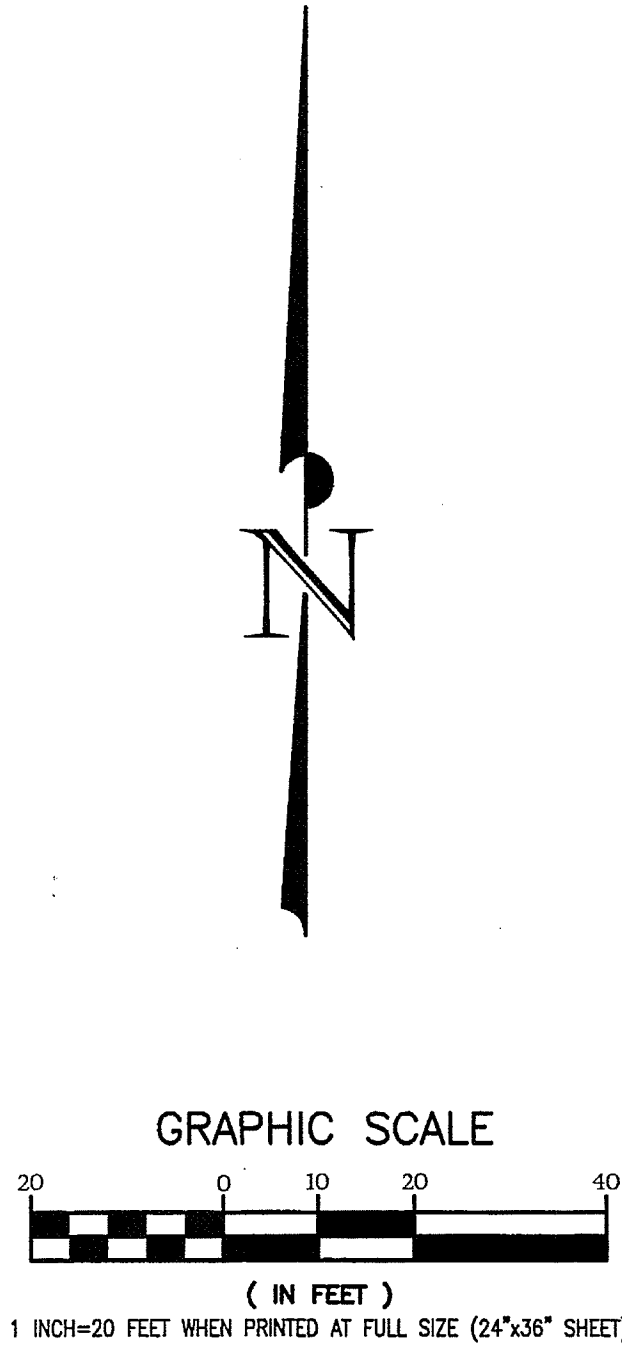
SURVEY BY:

CHRISTIE & CHRISTIE
LAND SURVEYING INC.

222 GRAND AVE. SUITE "D"
BELLINGHAM, WASHINGTON 98225
PH. # 360.671.8855 FAX # 360.671.8823

ELEVATION DATUM
CITY OF FERNDAL

DATE OF SURVEY
DECEMBER 6 & 12, 2007



APPROVED
APR 01 2008
BY [Signature]
CITY OF FERNDAL

CITY OF FERNDAL
PROJECT #DE-2008-09
AS-BUILT

ASSOCIATED PROJECT CONSULTANTS, INC., P.S.
CIVIL ENGINEERS, PROJECT AND LAND USE MANAGEMENT,
BUILDING, STRUCTURAL, AND ENVIRONMENTAL SERVICES
1401 ASTOR STREET, BELLINGHAM, WA. 98225
PHONE (360) 671-1146 FAX (360) 671-1169

A.P.C.
INCORPORATED

HORIZONTAL SCALE: 1" = 20'	VERTICAL SCALE: NONE	DRAWN BY: ADT	APPROVED BY:
DATE: 02/09/08	NORTH ROTATION: & BASE POINT:		

WHATCOM COUNTY FIRE DISTRICT #7

STATION 1 REMODEL

EXISTING CONDITIONS

CLIENT:	PROJECT:	TITLE:
06-124A	C3	3
ACAD FILE: CIVIL A4		
SHEET:		
OF:		