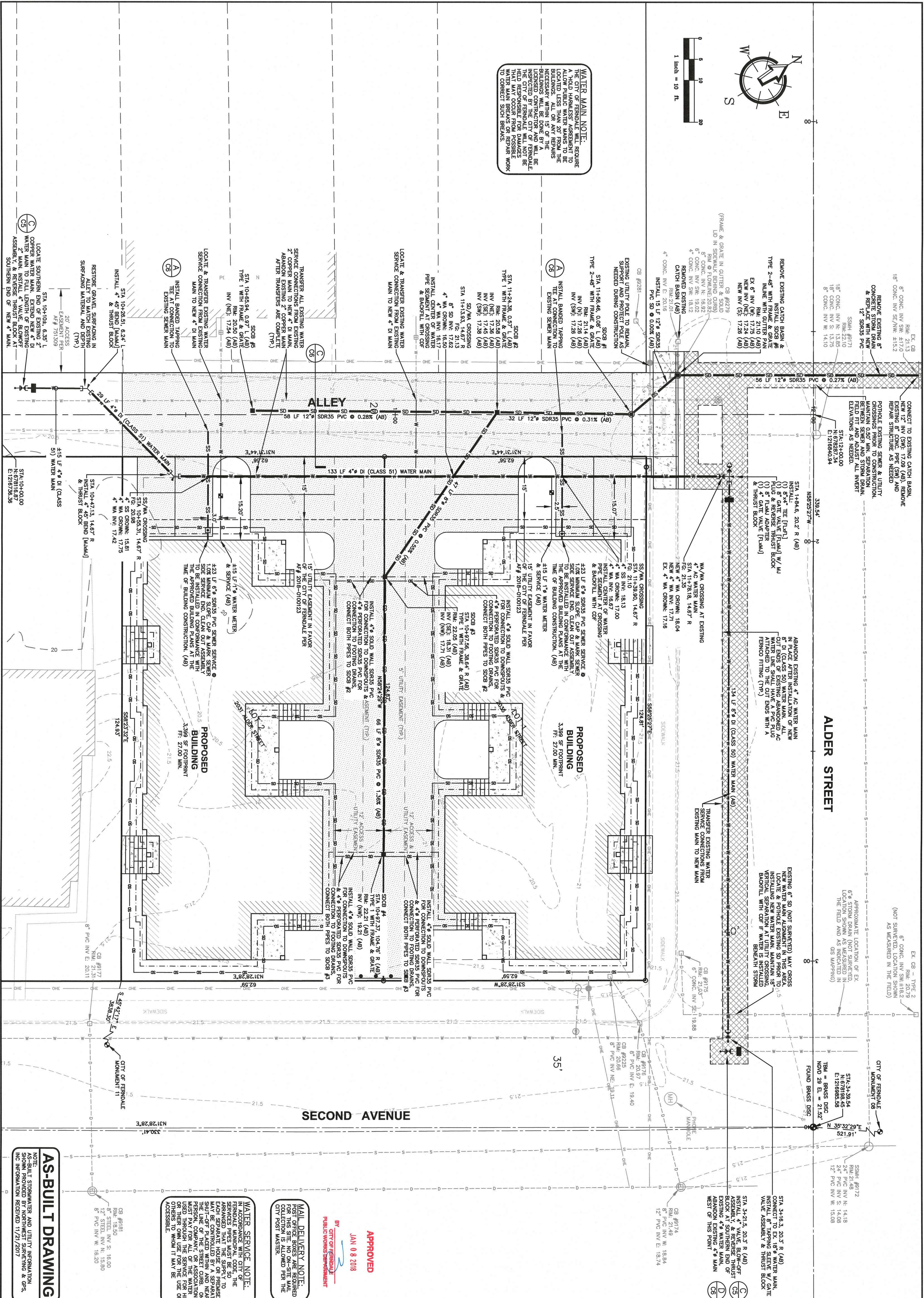


**WATER MAIN NOTE:**  
THE CITY OF FERNDALE WILL REQUIRE A HOLD HARMLESS AGREEMENT TO BE LOCATED LESS THAN 20' FROM THE EXISTING WATER MAINS. THE CITY OF FERNDALE WILL NOT BE RESPONSIBLE FOR DAMAGES TO BUILDINGS OR OTHER STRUCTURES NECESSARY TO CORRECT SUCH DAMAGES.



200 West Chicago Street, Suite 200  
Birmingham, AL 35203  
T: 205.663.1403  
F: 205.663.1401

BY:	DATE:	DESCRIPTION:
MOB	09-15-2017	RELOCATE WA & SD IN ALLEY TO AVOID CONFLICTS
MOB	09-15-2017	PERVIOUS ASPHALT IN LIEU OF PERVIOUS CONCRETE

CLIENT:  
**FERNDALE ASSOCIATES, LLC**  
1292 W AXTON ROAD  
FERNDALE, WA 98248  
  
CALL BEFORE YOU DIG  
FOR BURIED UTILITY LOCATIONS  
1-800-424-5555

PROJECT LOCATION:  
**2031 & 2035 ALDER STREET  
MULTI-FAMILY SITE PLAN**  
2031 & 2035 ALDER STREET  
FERNDALE, WA 98248

DRAWING #:  
18092AB2.DWG

DESIGNED BY:  
MDB

DRAWN BY:  
MDB

CHECKED BY:  
JPS

SHEET CONTENTS:  
**SITE UTILITY PLAN**

**AS-BUILT DRAWING**

NOTE: THIS IS A STRIPWATER AND UTILITY INFORMATION DRAWING. IT IS NOT A FINAL AS-BUILT DRAWING. IT IS PROVIDED FOR INFORMATIONAL PURPOSES ONLY. THE INFORMATION IS NOT TO BE USED FOR ANY OTHER PURPOSES WITHOUT THE WRITTEN CONSENT OF FREELAND & ASSOCIATES.

DATE: 01-05-2016  
JOB #: 16092  
SCALE: 1"=10'  
VERT: N/A

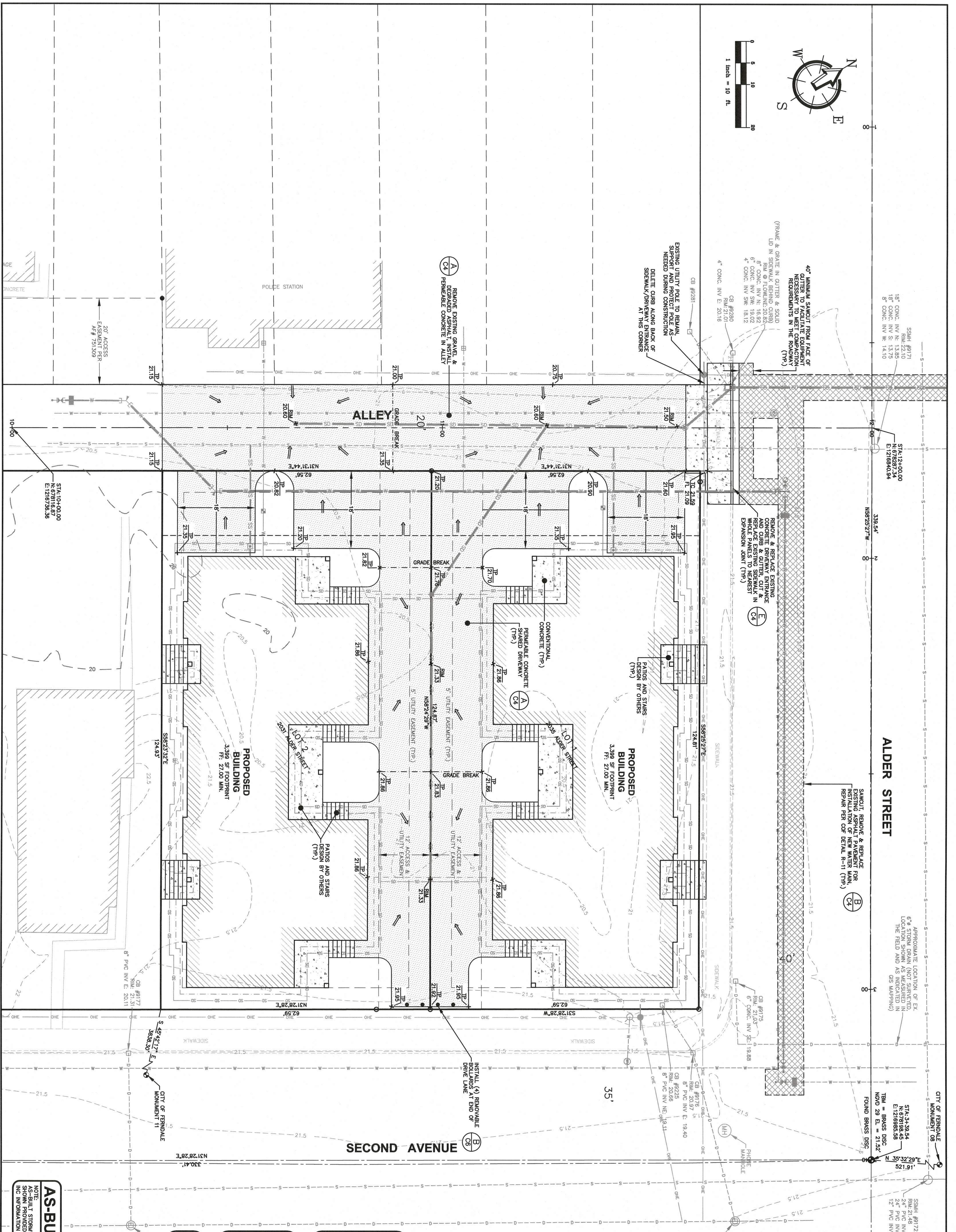
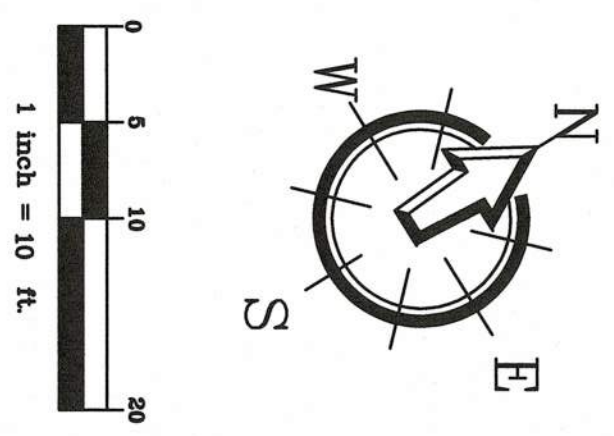
DATE: 01-05-2016  
JOB #: 16092  
SCALE: 1"=10'  
VERT: N/A

**WATER SERVICE NOTE:**  
IN ACCORDANCE WITH CITY OF FERNDALE ORDINANCE NO. 11.01, THE WATER SERVICE PIPES MUST BE SO LOCATED THAT THE SUPPLY TO THE BUILDING IS NOT INTERRUPTED IN THE EVENT OF A STREET CLOSURE. THE LINE OF THE STREET CLOSURE MUST BE PLACED WITHIN AND NEAR THE LINE OF THE STREET CLOSURE. THE WATER SERVICE PIPES MUST BE USED THROUGH THE SERVICE FOR HIS OFFENSES WHEN IT MAY BE ACCESSIBLE.

**MAIL DELIVERY NOTE:**  
POST OFFICE BOXES ARE REQUIRED FOR THIS SITE. NO ON-SITE MAIL CITY POST MASTER.

**APPROVED**  
JAN 08 2018  
CITY OF FERNDALE  
PUBLIC WORKS DEPARTMENT





## AS-BUILT DRAWING

**NOTE:**  
AS-BUILT STORMWATER AND UTILITY INFORMATION  
SHOWN PROVIDED BY NORTHWEST SURVEYING & GPS,  
INC INFORMATION RECEIVED 11/21/2017

**CITY OF FERRIDALE  
PUBLIC WORKS DEPARTMENT**

JAN 08 2018

**APPROVED**

**GRADING NOTE:**  
SITE GRADING SHALL BE COMPLETED IN ACCORDANCE WITH APPENDIX J OF THE 2015 INTERNATIONAL BUILDING CODE.

IN ORDER TO CERTIFY THE PROJECT, THE ENGINEER OF RECORD AND/OR A LICENSED GEOTECHNICAL ENGINEER MUST BE PRESENT ON SITE TO INSPECT AND APPROVE MATERIALS USED AND PLACEMENT AND CONSTRUCTION OF THE PROPOSED LOW IMPACT DEVELOPMENT (LID) MATERIALS IN THE ALLEY AND IN THE SHARED DRIVEWAY.

**DEVELOPMENT (LID). NOTE:**

1. THE CITY OF FERNDALE WILL NOT BE RESPONSIBLE FOR REPLACEMENT OR REPAIRS NEEDED FOR THE PERMEABLE PAYMENT DUE TO MAINTENANCE OF PUBLIC UTILITIES IN THE PUBLIC ALLEY.
2. ALL MAINTENANCE FOR THE PERMEABLE PAYMENT IN PUBLIC RIGHT OF WAY WILL BE THE SOLE RESPONSIBILITY OF THE PROPERTY OWNER AT 2031 & 2035 ALDER STREET.

**SHEET  
CONTENTS:**

## SITE GRADING PLAN

PROJECT LOCATION:  
**2031 & 2035 ALDER STREET**  
**MULTI-FAMILY SITE PLAN**  
2031 & 2035 ALDER STREET  
FERNDAL, WA 98248

DRAWING #: 16092AB2.DWG	DRAWN BY: MDB
DESIGNED BY: MDB	CHECKED BY: JPS

CLIENT:

**FERNDALE  
ASSOCIATES, LLC**

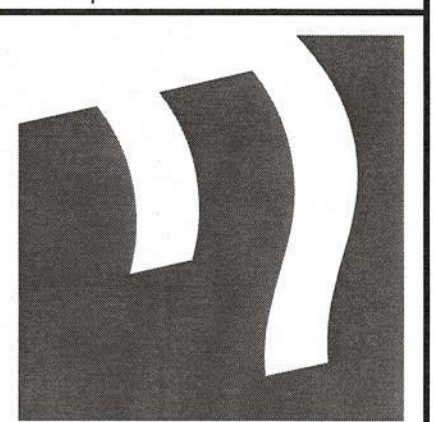
1292 W AXTON ROAD  
FERNDALE, WA 98248

CALL BEFORE YOU DIG  
FOR BURIED UTILITY LOCATIONS  
1-800-424-5555

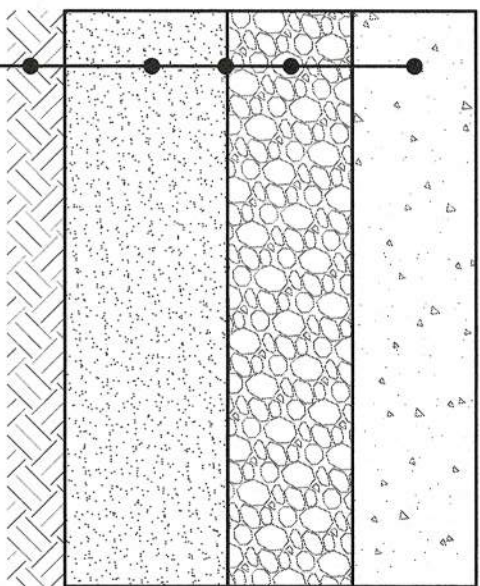
[illegible]

BY:	
MD	
MD	

220 West Champion Street, Suite 200  
Bellevue, WA 98005  
t. 360.650.1400  
f. 360.650.1401







- NOTES:
1. ALL DEPTHS REPRESENT COMPACTED DEPTHS.
  2. CONTROL JOINTS SHALL BE 1/4" DEPTH OF SLAB.
  3. ALL CONSTRUCTION JOINTS SHALL BE DOWELED.
- 6" PERMEABLE CONCRETE W/ FIBER MESH REINFORCEMENT (NO MESH 850 OR EQUAL)
- 4" PERMEABLE BALLAST PER WDOT 8-03.9(2) COMPACTED TO 95% MAX DENSITY, MODIFIED PROCTOR
- 12" MINIMUM DEPTH SAND LAYER, EXTEND AS NEEDED TO REACH SUITABLE SUBGRADE (SEE AMENDED SAND SPECIFICATIONS)
- EXISTING SUBGRADE

SAND SPECIFICATION	
U.S. SIEVE NUMBER	PERCENT PASSING
6	70 - 100
16	40 - 90
30	25 - 75
60	5 - 25
100	2 - 10
200	< 2

#### GENERAL INSTALLATION NOTES

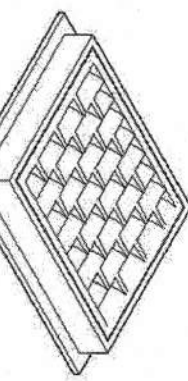
1. AFTER GRADING, THE EXISTING SUBGRADE SHALL NOT BE COMPACTED OR SUBJECTED TO EXCESSIVE CONSTRUCTION EQUIPMENT TRAFFIC.
2. IMMEDIATELY BEFORE BASE, AGGREGATE, AND ASPHALT PLACEMENT, REMOVE ANY ACCUMULATION OF FINE MATERIAL FROM EROSION WITH LIGHT EQUIPMENT, AND SCARIFY SOIL TO A MINIMUM DEPTH OF 6 INCHES.
3. EROSION AND INTRODUCTION OF SEDIMENT SHALL BE STRICTLY CONTROLLED DURING AND AFTER CONSTRUCTION TO PREVENT CLOGGING OF THE VOID SPACES IN THE BASE MATERIAL AND PERMEABLE SURFACE.
4. WRAP EACH LAYER OF THE INFILTRATION TRENCHES WITH AN APPROVED, NON-WOVEN FILTER FABRIC ACCORDING TO THE MANUFACTURER'S SPECIFICATIONS. FILTER FABRIC SHALL BE STAPLED TO THE SUBGRADE AT 12" MAX. SPACING. STAPLES SHALL BE PLACED TO PREVENT MIGRATION OF FINES FROM THE DENSELY GRADED BASE TO THE OPEN GRADED BASE MATERIAL. MAINTAIN PROPER COMPACTION AND AVOID DIFFERENTIAL SETTLING. OVERLAP ADJACENT STRIPS OF FABRIC AT LEAST 24 INCHES.

#### AMENDED SAND/SOIL SPECIFICATIONS:

1. LONG-TERM INFILTRATION RATE SHALL BE 2.0 IN/HR.
2. CATION EXCHANGE CAPACITY (CEC) OF THE TREATMENT SOIL MUST BE GREATER THAN OR EQUAL TO 17 MEQ/100 GMS DRY SOIL (USED AS A GUIDE). THE TREATMENT SOIL MUST BE TESTED FOR EXPECTED POLLUTANT LOADINGS, PARTICULARLY HEAVY METALS AND LOADING CAPACITY DETERMINATION FOR THE TARGET POLLUTANTS THAT IS ACCEPTED BY THE LOCAL JURISDICTION.
3. TREATMENT SOIL, RETAINED ON A U.S. SIEVE SHALL CONTAIN NOT MORE THAN 0.20 PERCENT BY WEIGHT OF WOOD WASTE.
4. WASTE FILL MATERIALS SHOULD NOT BE USED AS INFILTRATION FILL MEDIA NOR SHOULD MEDIA BE PLACED OVER UNCONTROLLED OR NON-ENGINEERED FILL SOILS.
5. SOIL AMENDMENTS MAY BE ADDED TO NATIVE SOIL IN ORDER TO OBTAIN THE REQUIRED INFILTRATION RATE AND CATION EXCHANGE CAPACITY. AMENDMENTS SHALL BE ADDED TO NATIVE SOILS PER RECOMMENDATIONS IN BMP TS.13 IN VOLUME V OF THE DEPARTMENT OF TRANSPORTATION'S MANAGEMENT MANUAL FOR WESTERN WASHINGTON, 2005 EDITION. AMENDMENTS TO NATIVE SOILS SHOULD MEET THE GRADING REQUIREMENTS FOR IMPORTED SAND BELOW.
6. MATERIAL TO BE USED FOR STORMWATER TREATMENT SHALL BE REMOVED AND APPROVED BY A LICENSED GEOTECHNICAL PROFESSIONAL (I.E. ENGINEER OR ENGINEERING GEOLOGIST) PRIOR TO INSTALLATION. THE GEOTECHNICAL PROFESSIONAL SHALL CERTIFY THAT THE STORMWATER TREATMENT MATERIAL MEETS INFILTRATION RATE, CEC CAPACITY, AND DRINKING WATER REQUIREMENTS AS DETERMINED IN THESE SPECIFICATIONS.

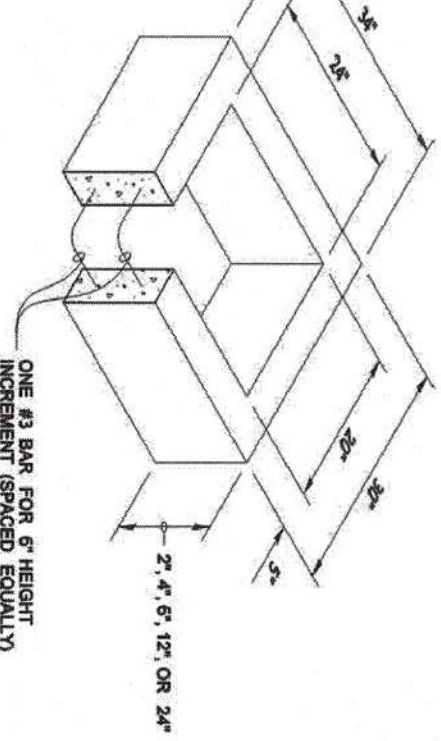
### A PERVIOUS CONCRETE PAVEMENT

DRAWN BY: LISA CYFORD



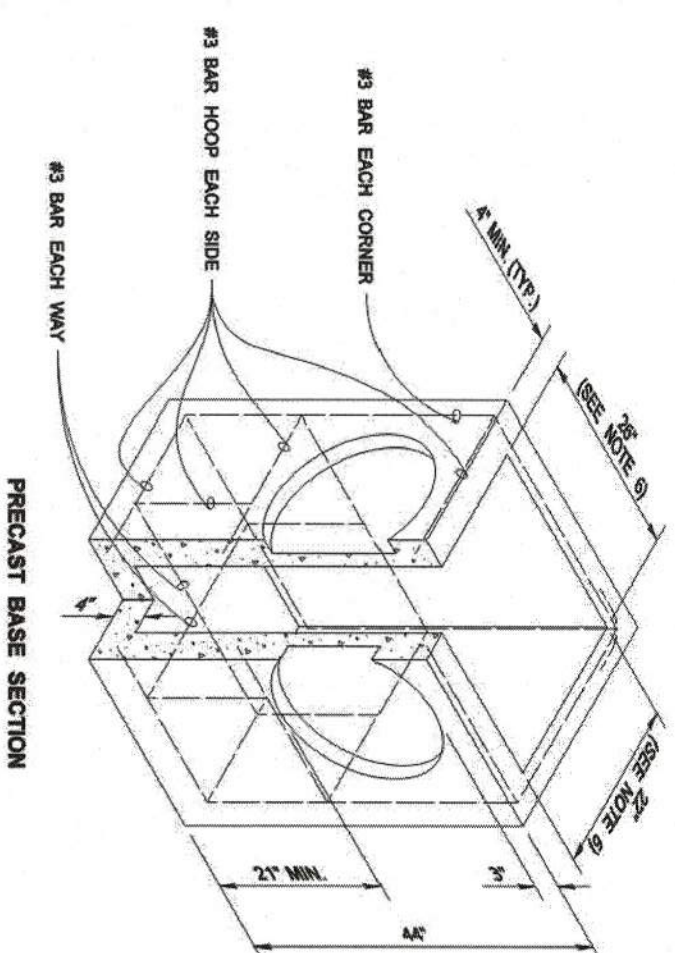
NOTE:  
INSTALL HERRINGBONE REINFORCEMENT (NOT VANE)

#### FRAME AND VANE GRATE

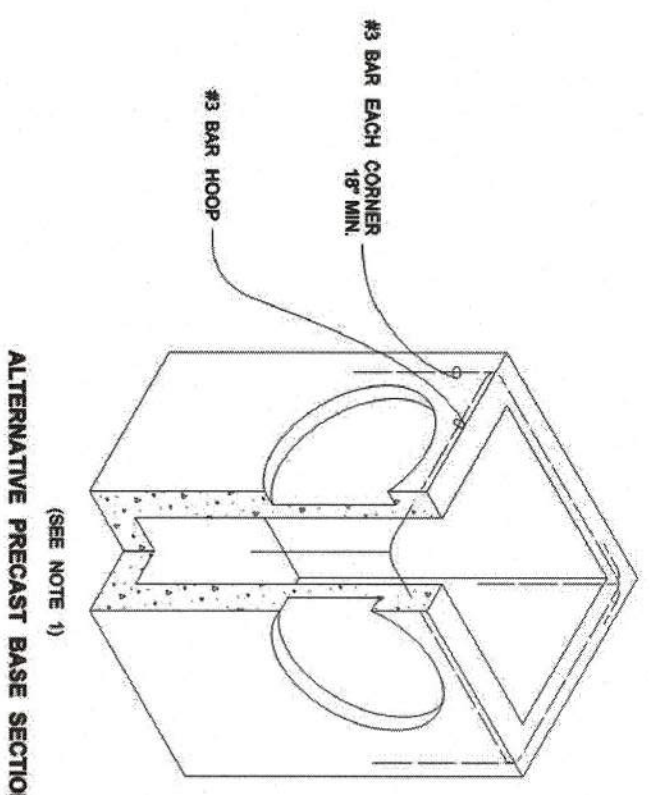


ONE #3 BAR FOR 6" HEIGHT INCREMENT (SPACED EQUALLY)

#### RECTANGULAR ADJUSTMENT SECTION



#### PRECAST BASE SECTION



#### ALTERNATIVE PRECAST BASE SECTION

PIPE ALLOWANCES	
PIPE MATERIAL	MAXIMUM DIAMETER
IMPERFORATED OR FLUID CONCRETE	12"
ALL METAL PIPE	15"
CS-90 # (STD. SPEC. 36.52.20)	12"
CS-90 # (STD. SPEC. 36.52.21)	15"
CS-90 # (STD. SPEC. 36.52.22)	15"

\* CORROLATED POLYETHYLENE STORM SEWER PIPE

- NOTES
1. As acceptable alternatives to the notes shown in the PRECAST BASE SECTION, these (based according to the Standard Specifications), or who must have a minimum area of (12 square inches per foot shall be used for the PRECAST BASE SECTION. Who must shall not be placed in the knickdown.
  2. The knickdown diameter shall not be greater than 20". Knickdowns shall have a wall thickness of 2" minimum to 2.5" maximum. Provide a 1.5" minimum gap between the knickdown wall and the outside of the pipe.
  3. The maximum depth from the finished grade to the lowest pipe invert shall be 6'.
  4. The frame and grate may be installed with the large down, or integrally cast into the adjustment section with flange up.
  5. The Precast Base Section may have a rounded floor, and the walls may be sloped at a rate of 1:24 or steeper.
  6. The opening shall be measured at the top of the Precast Base Section.
  7. All pickup holes shall be grouted full after the basin has been placed.

**CATCH BASIN TYPE 1**

STANDARD PLAN B-5-20-01

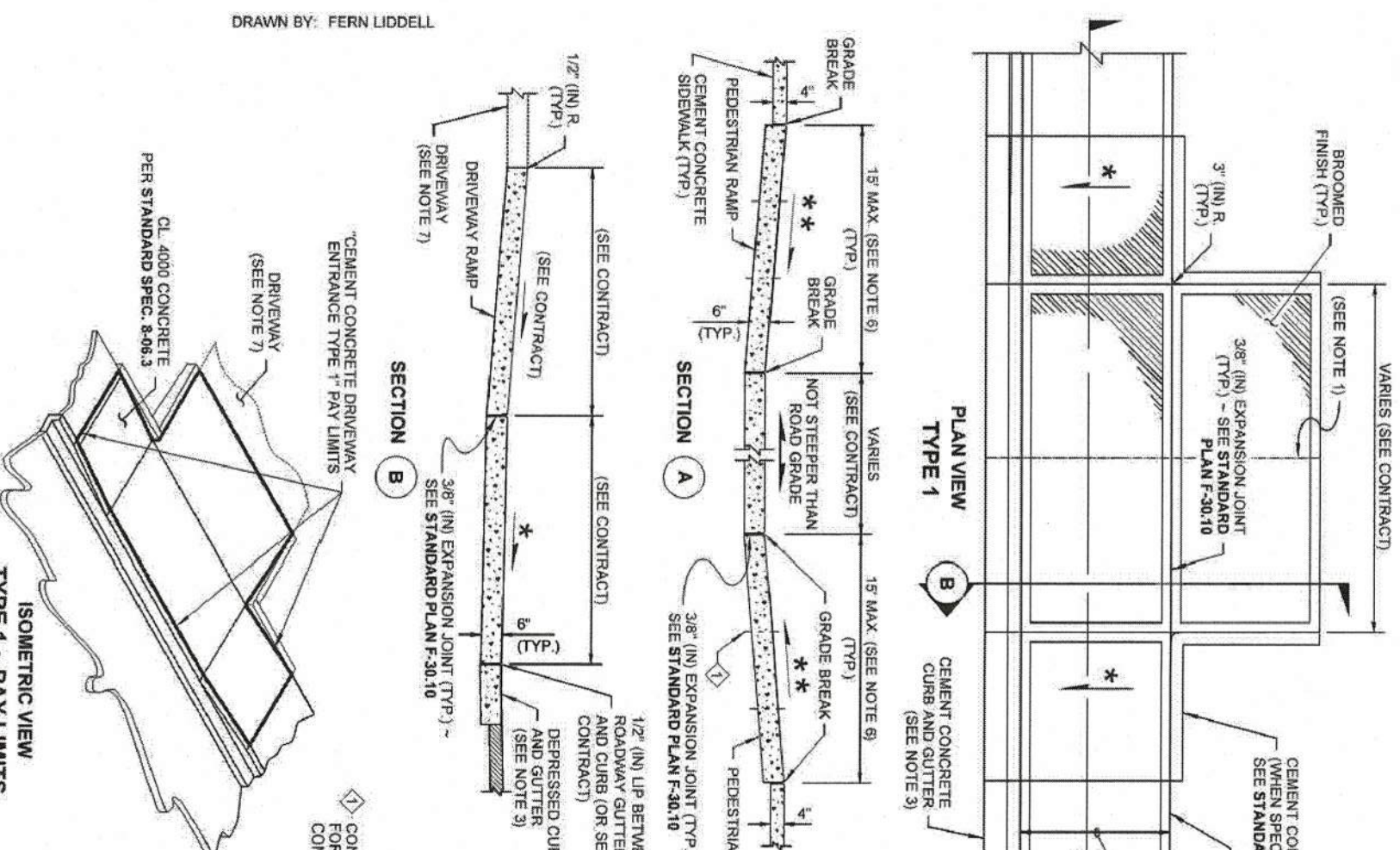
SHEET 1 OF 1 SHEET

APPROVED FOR PUBLICATION

Pasco Bickelich III 06-16-11

Washington State Department of Transportation

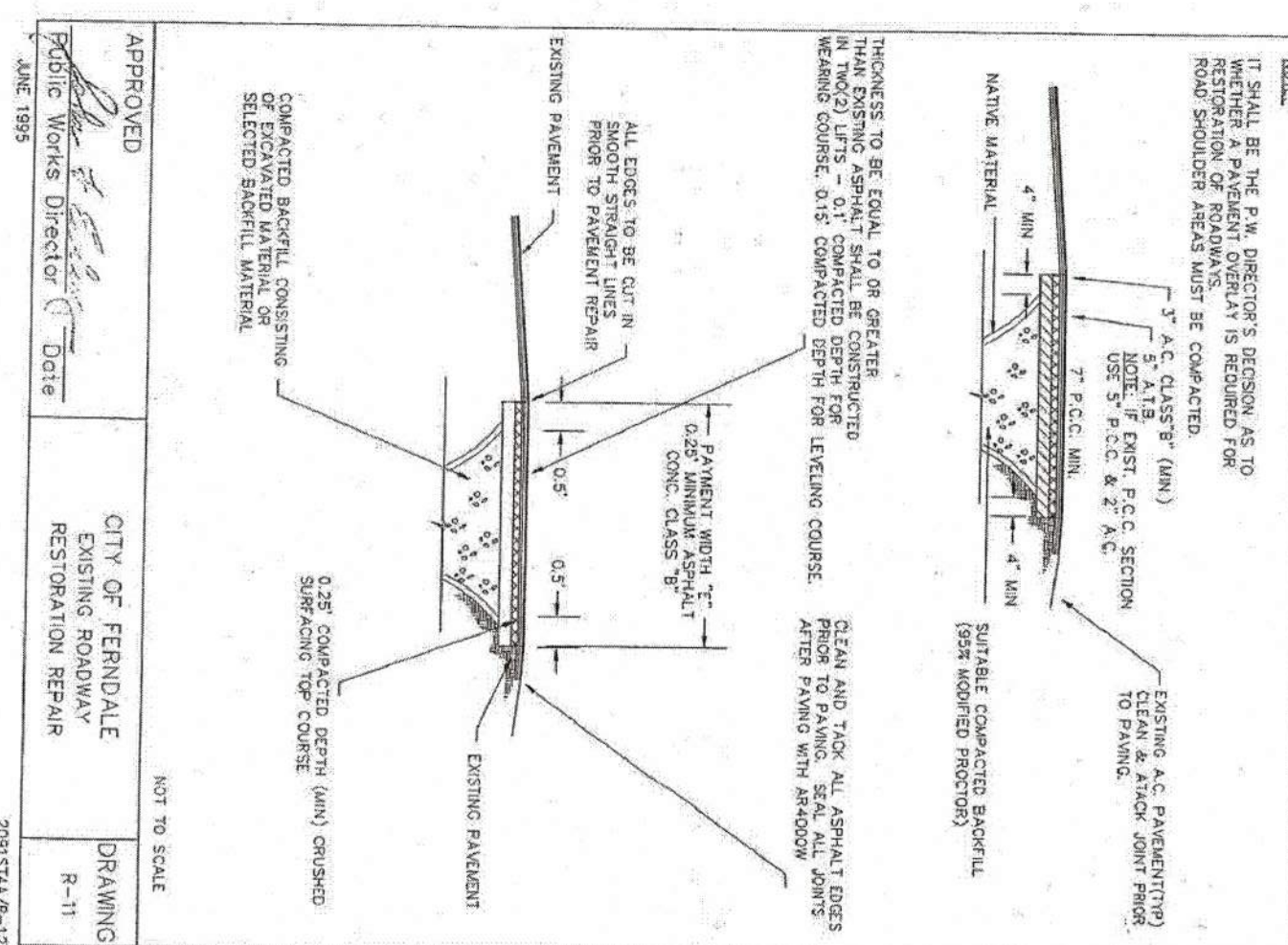
DRAWN BY: FERN LIDDELL



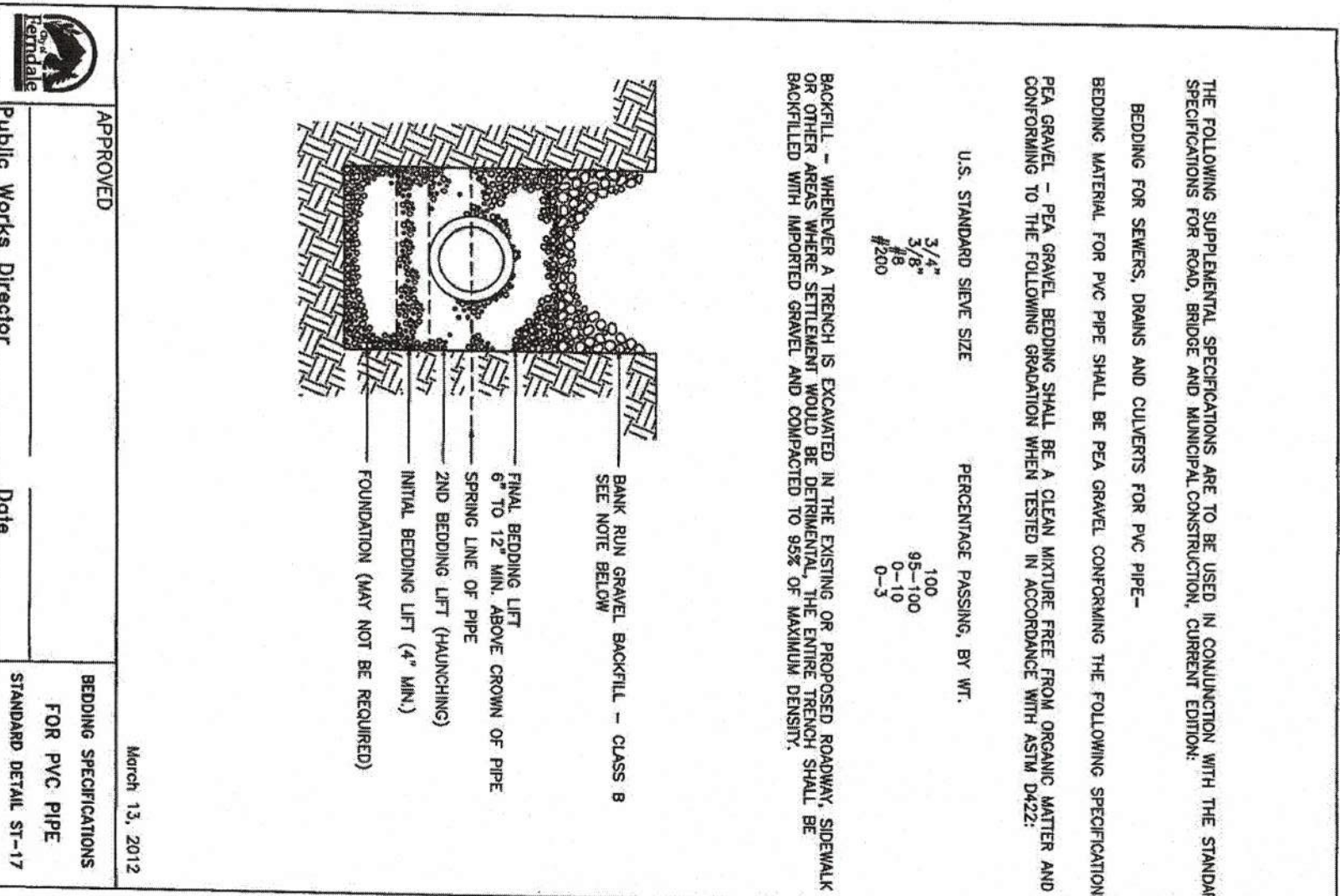
#### ISOMETRIC VIEW

#### ISOMETRIC VIEW

### B PAVEMENT REPAIR



### C PIPE BEDDING



**AS-BUILT DRAWING**

NOTE: ALL STORMWATER AND UTILITY INFORMATION SHOWN PROVIDED BY NORTHWEST SURVEYING & GPS, INC. INFORMATION RECEIVED 11/21/2017

APPROVED FOR PUBLICATION

STANDARD PLAN B-80-10-04

SHEET 1 OF 2 SHEETS

APPROVED FOR PUBLICATION

STANDARD PLAN B-80-10-04

SHEET 1 OF 2 SHEETS

**AS-BUILT DRAWING**

NOTE: ALL STORMWATER AND UTILITY INFORMATION SHOWN PROVIDED BY NORTHWEST SURVEYING & GPS, INC. INFORMATION RECEIVED 11/21/2017

APPROVED FOR PUBLICATION

STANDARD PLAN B-80-10-04

SHEET 1 OF 2 SHEETS

APPROVED FOR PUBLICATION

STANDARD PLAN B-80-10-04

SHEET 1 OF 2 SHEETS

**AS-BUILT DRAWING**

NOTE: ALL STORMWATER AND UTILITY INFORMATION SHOWN PROVIDED BY NORTHWEST SURVEYING & GPS, INC. INFORMATION RECEIVED 11/21/2017

APPROVED FOR PUBLICATION

STANDARD PLAN B-80-10-04

SHEET 1 OF 2 SHEETS

APPROVED FOR PUBLICATION

STANDARD PLAN B-80-10-04

SHEET 1 OF 2 SHEETS

**AS-BUILT DRAWING**

NOTE: ALL STORMWATER AND UTILITY INFORMATION SHOWN PROVIDED BY NORTHWEST SURVEYING & GPS, INC. INFORMATION RECEIVED 11/21/2017

APPROVED FOR PUBLICATION

STANDARD PLAN B-80-10-04

SHEET 1 OF 2 SHEETS

APPROVED FOR PUBLICATION

STANDARD PLAN B-80-10-04

SHEET 1 OF 2 SHEETS

**AS-BUILT DRAWING**

NOTE: ALL STORMWATER AND UTILITY INFORMATION SHOWN PROVIDED BY NORTHWEST SURVEYING & GPS, INC. INFORMATION RECEIVED 11/21/2017

APPROVED FOR PUBLICATION

STANDARD PLAN B-80-10-04

SHEET 1 OF 2 SHEETS

APPROVED FOR PUBLICATION

STANDARD PLAN B-80-10-04

SHEET 1 OF 2 SHEETS

**AS-BUILT DRAWING**

NOTE: ALL STORMWATER AND UTILITY INFORMATION SHOWN PROVIDED BY NORTHWEST SURVEYING & GPS, INC. INFORMATION RECEIVED 11/21/2017

APPROVED FOR PUBLICATION

STANDARD PLAN B-80-10-04

SHEET 1 OF 2 SHEETS

APPROVED FOR PUBLICATION

STANDARD PLAN B-80-10-04

SHEET 1 OF 2 SHEETS

**AS-BUILT DRAWING**

NOTE: ALL STORMWATER AND UTILITY INFORMATION SHOWN PROVIDED BY NORTHWEST SURVEYING & GPS, INC. INFORMATION RECEIVED 11/21/2017

APPROVED FOR PUBLICATION

STANDARD PLAN B-80-10-04

SHEET 1 OF 2 SHEETS

APPROVED FOR PUBLICATION

STANDARD PLAN B-80-10-04

SHEET 1 OF 2 SHEETS

**AS-BUILT DRAWING**

NOTE: ALL STORMWATER AND UTILITY INFORMATION SHOWN PROVIDED BY NORTHWEST SURVEYING & GPS, INC. INFORMATION RECEIVED 11/21/2017

APPROVED FOR PUBLICATION

STANDARD PLAN B-80-10-04

SHEET 1 OF 2 SHEETS

APPROVED FOR PUBLICATION

STANDARD PLAN B-80-10-04

SHEET 1 OF 2 SHEETS

**AS-BUILT DRAWING**

NOTE: ALL STORMWATER AND UTILITY INFORMATION SHOWN PROVIDED BY NORTHWEST SURVEYING & GPS, INC. INFORMATION RECEIVED 11/21/2017

APPROVED FOR PUBLICATION

STANDARD PLAN B-80-10-04

SHEET 1 OF 2 SHEETS

APPROVED FOR PUBLICATION

STANDARD PLAN B-80-10-04

SHEET 1 OF 2 SHEETS

**AS-BUILT DRAWING**

NOTE: ALL STORMWATER AND UTILITY INFORMATION SHOWN PROVIDED BY NORTHWEST SURVEYING & GPS, INC. INFORMATION RECEIVED 11/21/2017

APPROVED FOR PUBLICATION

STANDARD PLAN B-80-10-04

SHEET 1 OF 2 SHEETS

APPROVED FOR PUBLICATION

STANDARD PLAN B-80-10-04

SHEET 1 OF 2 SHEETS

**AS-BUILT DRAWING**

NOTE: ALL STORMWATER AND UTILITY INFORMATION SHOWN PROVIDED BY NORTHWEST SURVEYING & GPS, INC. INFORMATION RECEIVED 11/21/2017

APPROVED FOR PUBLICATION

STANDARD PLAN B-80-10-04

SHEET 1 OF 2 SHEETS

APPROVED FOR PUBLICATION

STANDARD PLAN B-80-10-04

SHEET 1 OF 2 SHEETS

**AS-BUILT DRAWING**

NOTE: ALL STORMWATER AND UTILITY INFORMATION SHOWN PROVIDED BY NORTHWEST SURVEYING & GPS, INC. INFORMATION RECEIVED 11/21/2017

APPROVED FOR PUBLICATION

STANDARD PLAN B-80-10-04

SHEET 1 OF 2 SHEETS

APPROVED FOR PUBLICATION

STANDARD PLAN B-80-10-04

SHEET 1 OF 2 SHEETS

**AS-BUILT DRAWING**

NOTE: ALL STORMWATER AND UTILITY INFORMATION SHOWN PROVIDED BY NORTHWEST SURVEYING & GPS, INC. INFORMATION RECEIVED 11/21/2017

APPROVED FOR PUBLICATION

STANDARD PLAN B-80-10-04

SHEET 1 OF 2 SHEETS

APPROVED FOR PUBLICATION

STANDARD PLAN B-80-10-04

SHEET 1 OF 2 SHEETS

**AS-BUILT DRAWING**

NOTE: ALL STORMWATER AND UTILITY INFORMATION SHOWN PROVIDED BY NORTHWEST SURVEYING & GPS, INC. INFORMATION RECEIVED 11/21/2017

APPROVED FOR PUBLICATION

STANDARD PLAN B-80-10-04

SHEET 1 OF 2 SHEETS

APPROVED FOR PUBLICATION

STANDARD PLAN B-80-10-04

SHEET 1 OF 2 SHEETS

**AS-BUILT DRAWING**

NOTE: ALL STORMWATER AND UTILITY INFORMATION SHOWN PROVIDED BY NORTHWEST SURVEYING & GPS, INC. INFORMATION RECEIVED 11/21/2017

APPROVED FOR PUBLICATION

STANDARD PLAN B-80-10-04

SHEET 1 OF 2 SHEETS

APPROVED FOR PUBLICATION

STANDARD PLAN B-80-10-04

SHEET 1 OF 2 SHEETS

**AS-BUILT DRAWING**

NOTE: ALL STORMWATER AND UTILITY INFORMATION SHOWN PROVIDED BY NORTHWEST SURVEYING & GPS, INC. INFORMATION RECEIVED 11/21/2017

APPROVED FOR PUBLICATION

STANDARD PLAN B-80-10-04

SHEET 1 OF 2 SHEETS

APPROVED FOR PUBLICATION

STANDARD PLAN B-80-10-04

SHEET 1 OF 2 SHEETS

**AS-BUILT DRAWING**

NOTE: ALL STORMWATER AND UTILITY INFORMATION SHOWN PROVIDED BY NORTHWEST SURVEYING & GPS, INC. INFORMATION RECEIVED 11/21/2017

APPROVED FOR PUBLICATION

STANDARD PLAN B-80-10-04

SHEET 1 OF 2 SHEETS

APPROVED FOR PUBLICATION

STANDARD PLAN B-80-10-04

SHEET 1 OF 2 SHEETS

**AS-BUILT DRAWING**

NOTE: ALL STORMWATER AND UTILITY INFORMATION SHOWN PROVIDED BY NORTHWEST SURVEYING & GPS, INC. INFORMATION RECEIVED 11/21/2017

APPROVED FOR PUBLICATION

STANDARD PLAN B-80-10-04

SHEET 1 OF 2 SHEETS

APPROVED FOR PUBLICATION

STANDARD PLAN B-80-10-04

SHEET 1 OF 2 SHEETS

**AS-BUILT DRAWING**

NOTE: ALL STORMWATER AND UTILITY INFORMATION SHOWN PROVIDED BY NORTHWEST SURVEYING & GPS, INC. INFORMATION RECEIVED 11/21/2017

APPROVED FOR PUBLICATION

STANDARD PLAN B-80-10-04

SHEET 1 OF 2 SHEETS

APPROVED FOR PUBLICATION

STANDARD PLAN B-80-10-04

SHEET 1 OF 2 SHEETS

**AS-BUILT DRAWING**

NOTE: ALL STORMWATER AND UTILITY INFORMATION SHOWN PROVIDED BY NORTHWEST SURVEYING & GPS, INC. INFORMATION RECEIVED 11/21/2017

APPROVED FOR PUBLICATION

STANDARD PLAN B-80-10-04

SHEET 1 OF 2 SHEETS

APPROVED FOR PUBLICATION

STANDARD PLAN B-80-10-04

SHEET 1 OF 2 SHEETS

**AS-BUILT DRAWING**

NOTE: ALL STORMWATER AND UTILITY INFORMATION SHOWN PROVIDED BY NORTHWEST SURVEYING & GPS, INC. INFORMATION RECEIVED 11/21/2017

APPROVED FOR PUBLICATION

STANDARD PLAN B-80-10-04

SHEET 1 OF 2 SHEETS

APPROVED FOR PUBLICATION

STANDARD PLAN B-80-10-04

SHEET 1 OF 2 SHEETS

**AS-BUILT DRAWING**

NOTE: ALL STORMWATER AND UTILITY INFORMATION SHOWN PROVIDED BY NORTHWEST SURVEYING & GPS, INC. INFORMATION RECEIVED 11/21/2017

APPROVED FOR PUBLICATION

STANDARD PLAN B-80-10-04

SHEET 1 OF 2 SHEETS

APPROVED FOR PUBLICATION

STANDARD PLAN B-80-10-04

SHEET 1 OF 2 SHEETS

**AS-BUILT DRAWING**

NOTE: ALL STORMWATER AND UTILITY INFORMATION SHOWN PROVIDED BY NORTHWEST SURVEYING & GPS, INC. INFORMATION RECEIVED 11/21/2017

APPROVED FOR PUBLICATION

STANDARD PLAN B-80-10-04

SHEET 1 OF 2 SHEETS

APPROVED FOR PUBLICATION

STANDARD PLAN B-80-10-04

SHEET 1 OF 2 SHEETS

**AS-BUILT DRAWING**

NOTE: ALL STORMWATER AND UTILITY INFORMATION SHOWN PROVIDED BY NORTHWEST SURVEYING & GPS, INC. INFORMATION RECEIVED 11/21/2017

APPROVED FOR PUBLICATION

STANDARD PLAN B-80-10-04

SHEET 1 OF 2 SHEETS

APPROVED FOR PUBLICATION

STANDARD PLAN B-80-10-04

SHEET 1 OF 2 SHEETS

**AS-BUILT DRAWING**

NOTE: ALL STORMWATER AND UTILITY INFORMATION SHOWN PROVIDED BY NORTHWEST SURVEYING & GPS, INC. INFORMATION RECEIVED 11/21/2017

APPROVED FOR PUBLICATION

STANDARD PLAN B-80-10-04

SHEET 1 OF 2 SHEETS

APPROVED FOR PUBLICATION

STANDARD PLAN B-80-10-04

SHEET 1 OF 2 SHEETS

**AS-BUILT DRAWING**

NOTE: ALL STORMWATER AND UTILITY INFORMATION SHOWN PROVIDED BY NORTHWEST SURVEYING & GPS, INC. INFORMATION RECEIVED 11/21/2017

APPROVED FOR PUBLICATION

STANDARD PLAN B-80-10-04

SHEET 1 OF 2 SHEETS

APPROVED FOR PUBLICATION

STANDARD PLAN B-80-10-04

SHEET 1 OF 2 SHEETS

**AS-BUILT DRAWING**

NOTE: ALL STORMWATER AND UTILITY INFORMATION SHOWN PROVIDED BY NORTHWEST SURVEYING & GPS, INC. INFORMATION RECEIVED 11/21/2017

APPROVED FOR PUBLICATION

STANDARD PLAN B-80-10-04

SHEET 1 OF 2 SHEETS

APPROVED FOR PUBLICATION

STANDARD PLAN B-80-10-04

SHEET 1 OF 2 SHEETS

**AS-BUILT DRAWING**

NOTE: ALL STORMWATER AND UTILITY INFORMATION SHOWN PROVIDED BY NORTHWEST SURVEYING & GPS, INC. INFORMATION RECEIVED 11/21/2017

APPROVED FOR PUBLICATION

STANDARD PLAN B-80-10-04

SHEET 1 OF 2 SHEETS

APPROVED FOR PUBLICATION

STANDARD PLAN B-80-10-04

SHEET 1 OF 2 SHEETS

**AS-BUILT DRAWING**

NOTE: ALL STORMWATER AND UTILITY INFORMATION SHOWN PROVIDED BY NORTHWEST SURVEYING & GPS, INC. INFORMATION RECEIVED 11/21/2017

APPROVED FOR PUBLICATION

STANDARD PLAN B-80-10-04

SHEET 1 OF 2 SHEETS

APPROVED FOR PUBLICATION

STANDARD PLAN B-80-10-04

SHEET 1 OF 2 SHEETS

**AS-BUILT DRAWING**

NOTE: ALL STORMWATER AND UTILITY INFORMATION SHOWN PROVIDED BY NORTHWEST SURVEYING & GPS, INC. INFORMATION RECEIVED 11/21/2017

APPROVED FOR PUBLICATION

STANDARD PLAN B-80-10-04

SHEET 1 OF 2 SHEETS

APPROVED FOR PUBLICATION

STANDARD PLAN B-80-10-04

SHEET 1 OF 2 SHEETS

**AS-BUILT DRAWING**

NOTE: ALL STORMWATER AND UTILITY INFORMATION SHOWN PROVIDED BY NORTHWEST SURVEYING & GPS, INC. INFORMATION RECEIVED 11/21/2017

APPROVED FOR PUBLICATION

STANDARD PLAN B-80-10-04

SHEET 1 OF 2 SHEETS

APPROVED FOR PUBLICATION

STANDARD PLAN B-80-10-04

SHEET 1 OF 2 SHEETS

**AS-BUILT DRAWING**

NOTE: ALL STORMWATER AND UTILITY INFORMATION SHOWN PROVIDED BY NORTHWEST SURVEYING & GPS, INC. INFORMATION RECEIVED 11/21/2017

APPROVED FOR PUBLICATION

STANDARD PLAN B-80-10-04

SHEET 1 OF 2 SHEETS

APPROVED FOR PUBLICATION

STANDARD PLAN B-80-10-04

SHEET 1 OF 2 SHEETS

**AS-BUILT DRAWING**

NOTE: ALL STORMWATER AND UTILITY INFORMATION SHOWN PROVIDED BY NORTHWEST SURVEYING & GPS, INC. INFORMATION RECEIVED 11/21/2017

APPROVED FOR PUBLICATION

STANDARD PLAN B-80-10-04

SHEET 1 OF 2 SHEETS

APPROVED FOR PUBLICATION

STANDARD PLAN B-80-10-04

SHEET 1 OF 2 SHEETS

**AS-BUILT DRAWING**

NOTE: ALL STORMWATER AND UTILITY INFORMATION SHOWN PROVIDED BY NORTHWEST SURVEYING & GPS, INC. INFORMATION RECEIVED 11/21/2017

APPROVED FOR PUBLICATION

STANDARD PLAN B-80-10-04

SHEET 1 OF 2 SHEETS

APPROVED FOR PUBLICATION

STANDARD PLAN B-80-10-04

SHEET 1 OF 2 SHEETS

**AS-BUILT DRAWING**

NOTE: ALL STORMWATER AND UTILITY INFORMATION SHOWN PROVIDED BY NORTHWEST SURVEYING & GPS, INC. INFORMATION RECEIVED 11/21/2017

APPROVED FOR PUBLICATION

STANDARD PLAN B-80-10-04

SHEET 1 OF 2 SHEETS

APPROVED FOR PUBLICATION

STANDARD PLAN B-80-10-04

SHEET 1 OF 2 SHEETS

**AS-BUILT DRAWING**

NOTE: ALL STORMWATER AND UTILITY INFORMATION SHOWN PROVIDED BY NORTHWEST SURVEYING & GPS, INC. INFORMATION RECEIVED 11/21/2017

APPROVED FOR PUBLICATION

STANDARD PLAN B-80-10-04

SHEET 1 OF 2 SHEETS

APPROVED FOR PUBLICATION

STANDARD PLAN B-80-10-04

SHEET 1 OF 2 SHEETS

**AS-BUILT DRAWING**

NOTE: ALL STORMWATER AND UTILITY INFORMATION SHOWN PROVIDED BY NORTHWEST SURVEYING & GPS, INC. INFORMATION RECEIVED 11/21/2017

APPROVED FOR PUBLICATION

STANDARD PLAN B-80-10-04

SHEET 1 OF 2 SHEETS

APPROVED FOR PUBLICATION

STANDARD PLAN B-80-10-04

SHEET 1 OF 2 SHEETS

**AS-BUILT DRAWING**

NOTE: ALL STORMWATER AND UTILITY INFORMATION SHOWN PROVIDED BY NORTHWEST SURVEYING & GPS, INC. INFORMATION RECEIVED 11/21/2017

APPROVED FOR PUBLICATION

STANDARD PLAN B-80-10-04

SHEET 1 OF 2 SHEETS

APPROVED FOR PUBLICATION

STANDARD PLAN B-80-10-04

SHEET 1 OF 2 SHEETS

**AS-BUILT DRAWING**

NOTE: ALL STORMWATER AND UTILITY INFORMATION SHOWN PROVIDED BY NORTHWEST SURVEYING & GPS, INC. INFORMATION RECEIVED 11/21/2017

APPROVED FOR PUBLICATION

STANDARD PLAN B-80-10-04

SHEET 1 OF 2 SHEETS

APPROVED FOR PUBLICATION

STANDARD PLAN B-80-10-04

SHEET 1 OF 2 SHEETS

**AS-BUILT DRAWING**

NOTE: ALL STORMWATER AND UTILITY INFORMATION SHOWN PROVIDED BY NORTHWEST SURVEYING & GPS, INC. INFORMATION RECEIVED 11/21/2017

APPROVED FOR PUBLICATION

STANDARD PLAN B-80-10-04

SHEET 1 OF 2 SHEETS

APPROVED FOR PUBLICATION

STANDARD PLAN B-80-10-04

SHEET 1 OF 2 SHEETS

**AS-BUILT DRAWING**

NOTE: ALL STORMWATER AND UTILITY INFORMATION SHOWN PROVIDED BY NORTHWEST SURVEYING & GPS, INC. INFORMATION RECEIVED 11/21/2017

APPROVED FOR PUBLICATION

STANDARD PLAN B-80-10-04

SHEET 1 OF 2 SHEETS

APPROVED FOR PUBLICATION

STANDARD PLAN B-80-10-04

SHEET 1 OF 2 SHEETS

**AS-BUILT DRAWING**

NOTE: ALL STORMWATER AND UTILITY INFORMATION SHOWN PROVIDED BY NORTHWEST SURVEYING & GPS, INC. INFORMATION RECEIVED 11/21/2017

APPROVED FOR PUBLICATION

STANDARD PLAN B-80-10-04

SHEET 1 OF 2 SHEETS

APPROVED FOR PUBLICATION

STANDARD PLAN B-80-10-04

SHEET 1 OF 2 SHEETS

**AS-BUILT DRAWING**

NOTE: ALL STORMWATER AND UTILITY INFORMATION SHOWN PROVIDED BY NORTHWEST SURVEYING & GPS, INC. INFORMATION RECEIVED 11/21/2017

APPROVED FOR PUBLICATION

STANDARD PLAN B-80-10-04

SHEET 1 OF 2 SHEETS

APPROVED FOR PUBLICATION

STANDARD PLAN B-80-10-04

SHEET 1 OF 2 SHEETS

**AS-BUILT DRAWING**

NOTE: ALL STORMWATER AND UTILITY INFORMATION SHOWN PROVIDED BY NORTHWEST SURVEYING & GPS, INC. INFORMATION RECEIVED 11/21/2017

APPROVED FOR PUBLICATION

STANDARD PLAN B-80-10-04

SHEET 1 OF 2 SHEETS

APPROVED FOR PUBLICATION

STANDARD PLAN B-80-10-04

SHEET 1 OF 2 SHEETS

**AS-BUILT DRAWING**

NOTE: ALL STORMWATER AND UTILITY INFORMATION SHOWN PROVIDED BY NORTHWEST SURVEYING & GPS, INC. INFORMATION RECEIVED 11/21/2017

APPROVED FOR PUBLICATION

STANDARD PLAN B-80-10-04

SHEET 1 OF 2 SHEETS

APPROVED FOR PUBLICATION

STANDARD PLAN B-80-10-04

SHEET 1 OF 2 SHEETS

**AS-BUILT DRAWING**

NOTE: ALL STORMWATER AND UTILITY INFORMATION SHOWN PROVIDED BY NORTHWEST SURVEYING & GPS, INC. INFORMATION RECEIVED 11/21/2017

APPROVED FOR PUBLICATION

STANDARD PLAN B-80-10-04

SHEET 1 OF 2 SHEETS

APPROVED FOR PUBLICATION

STANDARD PLAN B-80-10-04

SHEET 1 OF 2 SHEETS

**AS-BUILT DRAWING**

NOTE: ALL STORMWATER AND UTILITY INFORMATION SHOWN PROVIDED BY NORTHWEST SURVEYING & GPS, INC. INFORMATION RECEIVED 11/21/2017

APPROVED FOR PUBLICATION

STANDARD PLAN B-80-10-04

SHEET 1 OF 2 SHEETS

APPROVED FOR PUBLICATION

STANDARD PLAN B-80-10-04

SHEET 1 OF 2 SHEETS

**AS-BUILT DRAWING**

NOTE: ALL STORMWATER AND UTILITY INFORMATION SHOWN PROVIDED BY NORTHWEST SURVEYING & GPS, INC. INFORMATION RECEIVED 11/21/2017

APPROVED FOR PUBLICATION

STANDARD PLAN B-80-10-04

SHEET 1 OF 2 SHEETS

APPROVED FOR PUBLICATION

STANDARD PLAN B-80-10-04

SHEET 1 OF 2 SHEETS

**AS-BUILT DRAWING**

NOTE: ALL STORMWATER AND UTILITY INFORMATION SHOWN PROVIDED BY NORTHWEST SURVEYING & GPS, INC. INFORMATION RECEIVED 11/21/2017

APPROVED FOR PUBLICATION

STANDARD PLAN B-80-10-04

SHEET 1 OF 2 SHEETS

APPROVED FOR PUBLICATION

STANDARD PLAN B-80-10-04

SHEET 1 OF 2 SHEETS

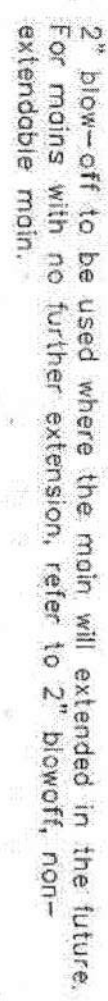




# THRUST BLOCKING @ ELBOWS



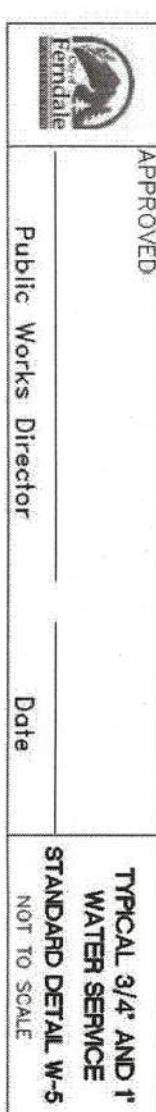
## THRUST BLOCKING @ TEES



**WATER MAIN BLOW-OFF**



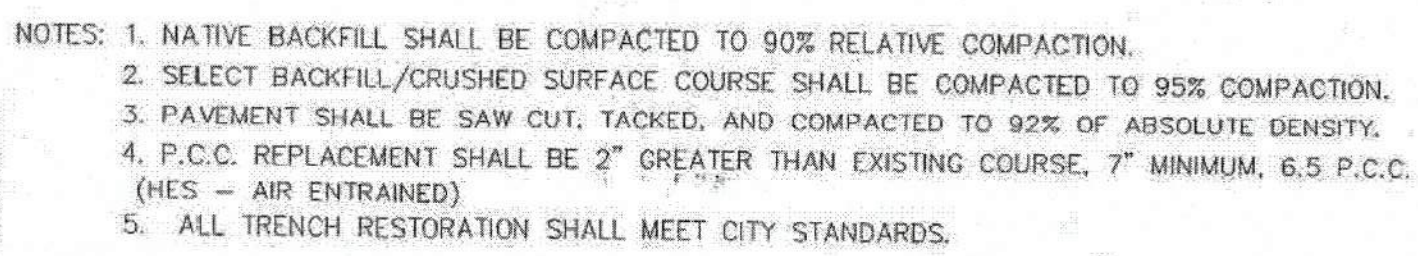
# UTILITY CROSSING AT WATER MAIN



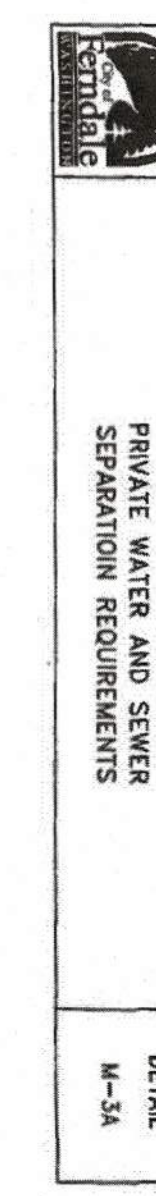
**F** TYPICAL WATER SERVICE  
mts



**G** **CONCRETE METER BOX**  
nts



## D<sub>nl</sub> WATER TRENCHING

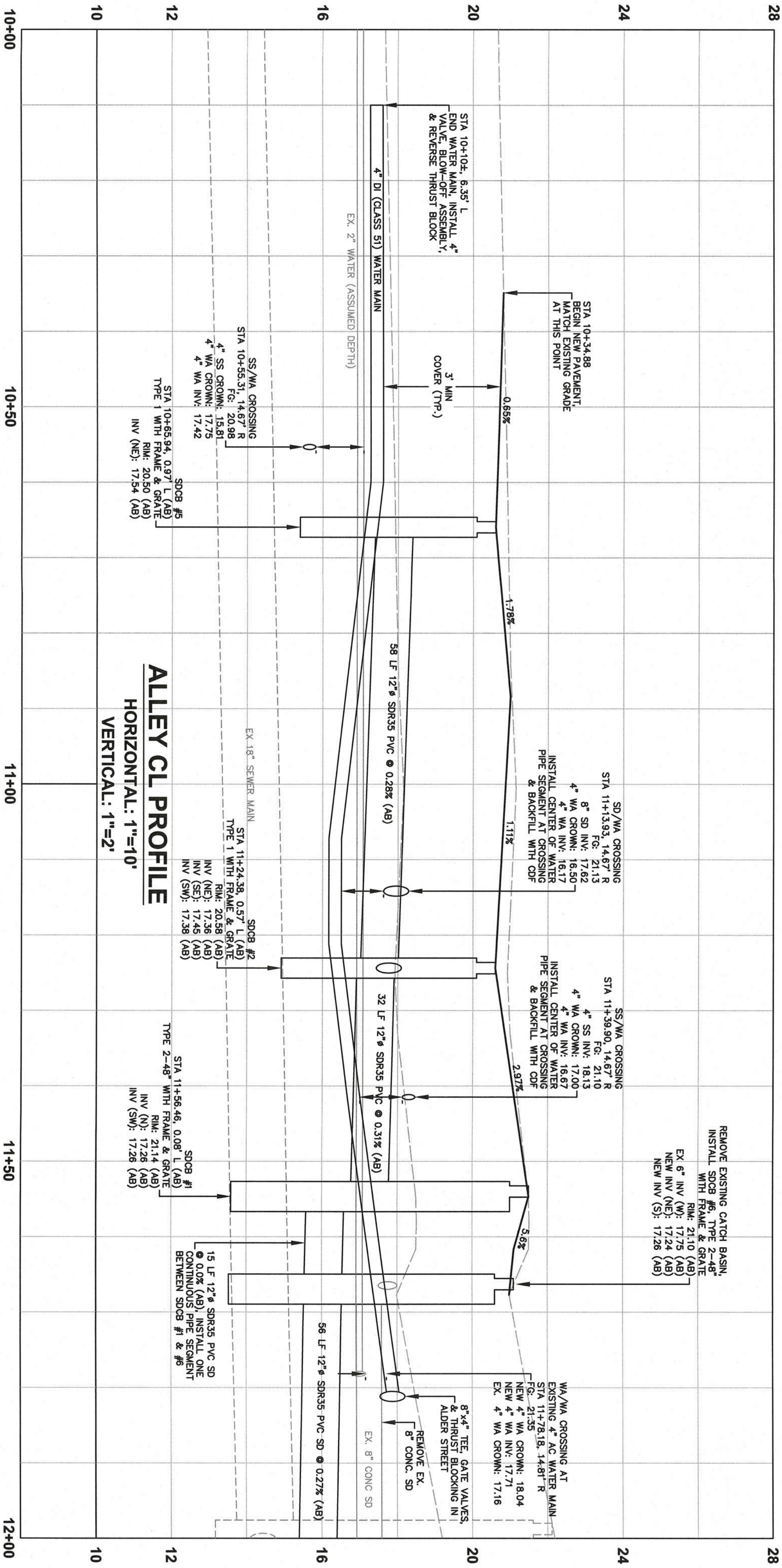
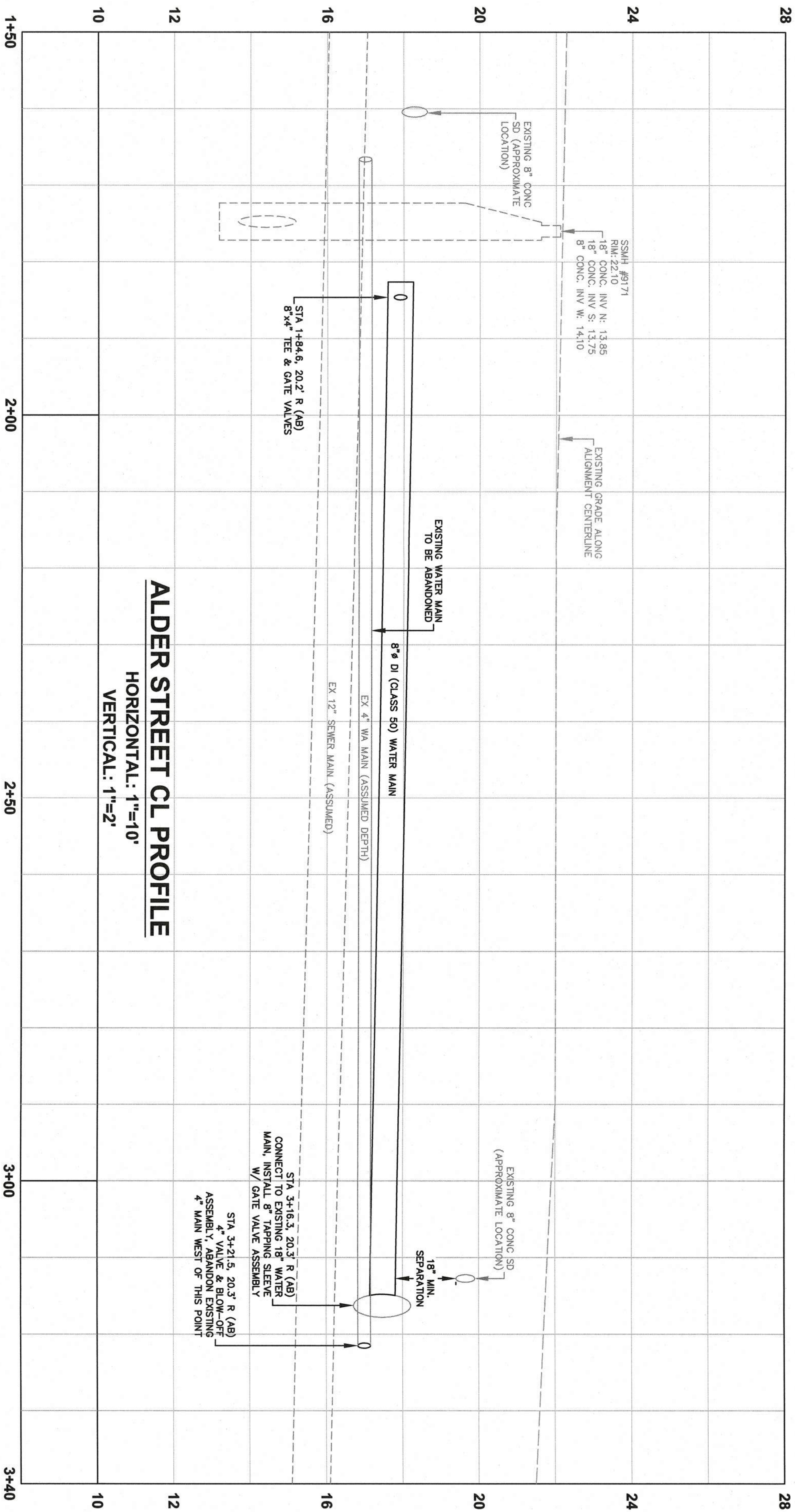


# UTILITY SERVICE SEPARATION REQUIREMENTS









200 West Champion Street, Suite 200 | 98003-1408  
Bellevue, WA 98003  
F & ASSOCIATES

BY: MDB

REV:	DATE:	DESCRIPTION:
1	09-15-2017	RELOCATE WA & SD IN ALLEY TO AVOID CONFLICTS
2	09-15-2017	PERVIOUS ASPHALT IN LIEU OF PERVIOUS CONCRETE

CLIENT:

**FERNDALE ASSOCIATES, LLC**  
1292 W AXTON ROAD  
FERNDALE, WA 98248

CALL BEFORE YOU DIG  
FOR BURIED UTILITY LOCATIONS  
1-800-424-5555

PROJECT LOCATION:  
**2031 & 2035 ALDER STREET  
MULTI-FAMILY SITE PLAN**  
2031 & 2035 ALDER STREET  
FERNDALE, WA 98248

DRAWING #: 16092AB2.DWG  
DESIGNED BY: MDB  
DRAWN BY: MDB  
CHECKED BY: JPS

SHEET CONTENTS:

**WATER MAIN PROFILES**

APPROVED

JAN 0 8 2018

BY: CITY OF FERNDALE  
PUBLIC WORKS DEPARTMENT



**AS-BUILT DRAWING**

NOTE: ALL STORMWATER AND UTILITY INFORMATION SHOWN PROVIDED BY NORTHWEST SURVEYING & GPS. INC INFORMATION RECEIVED 11/21/2017

JOB #: 16092  
SCALE: HORIZ: 1"=10'  
VERT: 1"=2'

DATE: 01-05-2018  
SHEET: C7









201 Main Campus Street, Suite 200 • 380.663.1468  
Bellingham, WA 98225 • 360.693.1041  
**FREELAND & ASSOCIATES**

BY:	DATE:	DESCRIPTION:
MDB	08-15-2017	RELOCATE WA & SD IN ALLEY TO AVOID CONFLICTS
MDB	08-15-2017	PERVIOUS ASPHALT IN LIEU OF PERVIOUS CONCRETE

CLIENT: **FERNDALE ASSOCIATES, LLC**  
1292 W AXTON ROAD  
FERNDALE, WA 98248  
**CALL BEFORE YOU DIG**  
FOR BURIED UTILITY LOCATIONS  
1-800-424-5555

PROJECT LOCATION: <b>2031 &amp; 2035 ALDER STREET MULTI-FAMILY SITE PLAN</b> 2031 & 2035 ALDER STREET FERNDALE, WA 98248	DRAWN BY: MDB
DRAWING #: 160922AB2.DWG	CHECKED BY: JPS
DESIGNED BY: MDB	

SHEET CONTENTS:  
**TEMPORARY EROSION CONTROL NOTES & DETAILS**

1616

16092

01-05-2018

C9

1616

16092

01-05-2018

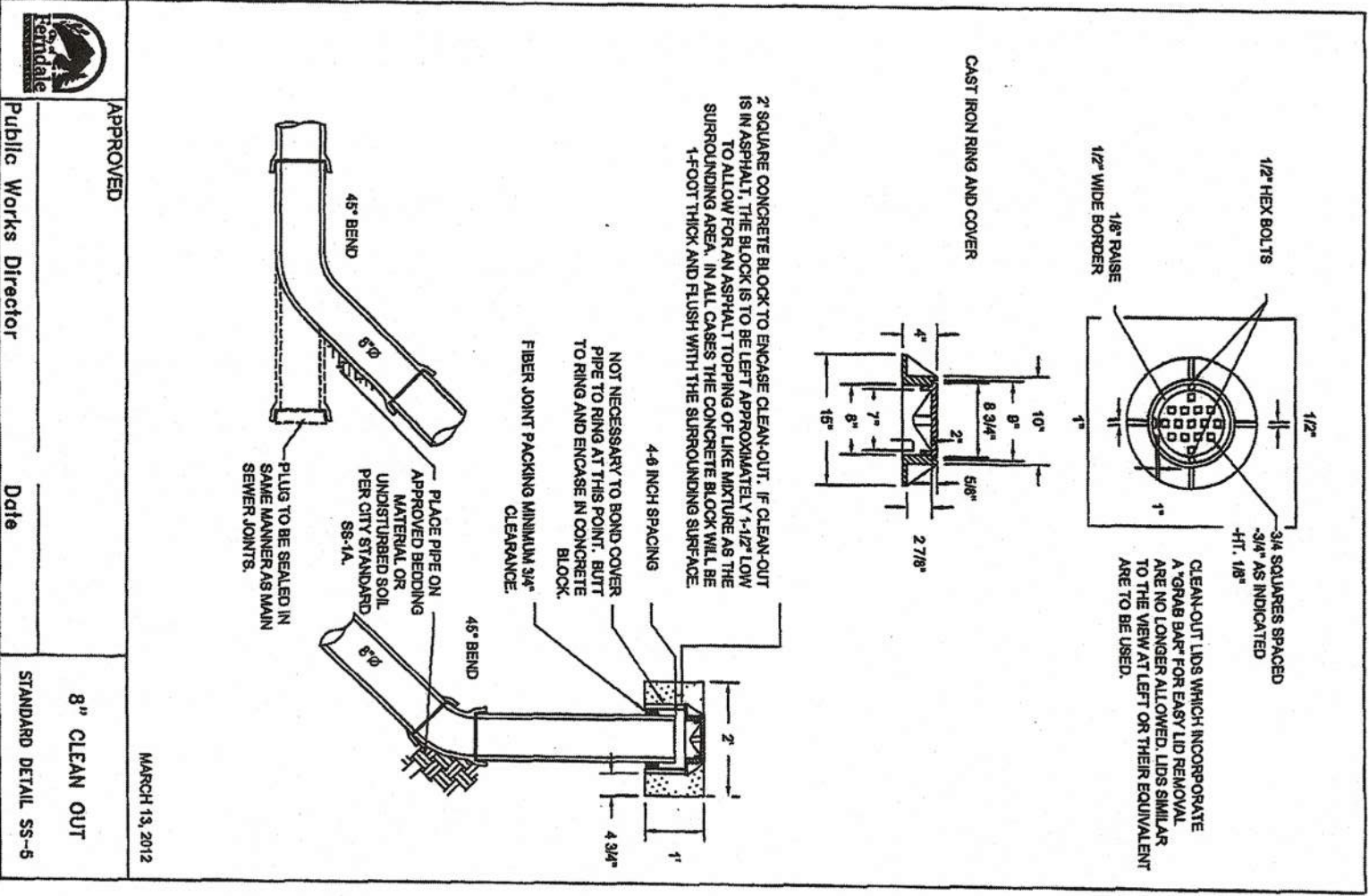
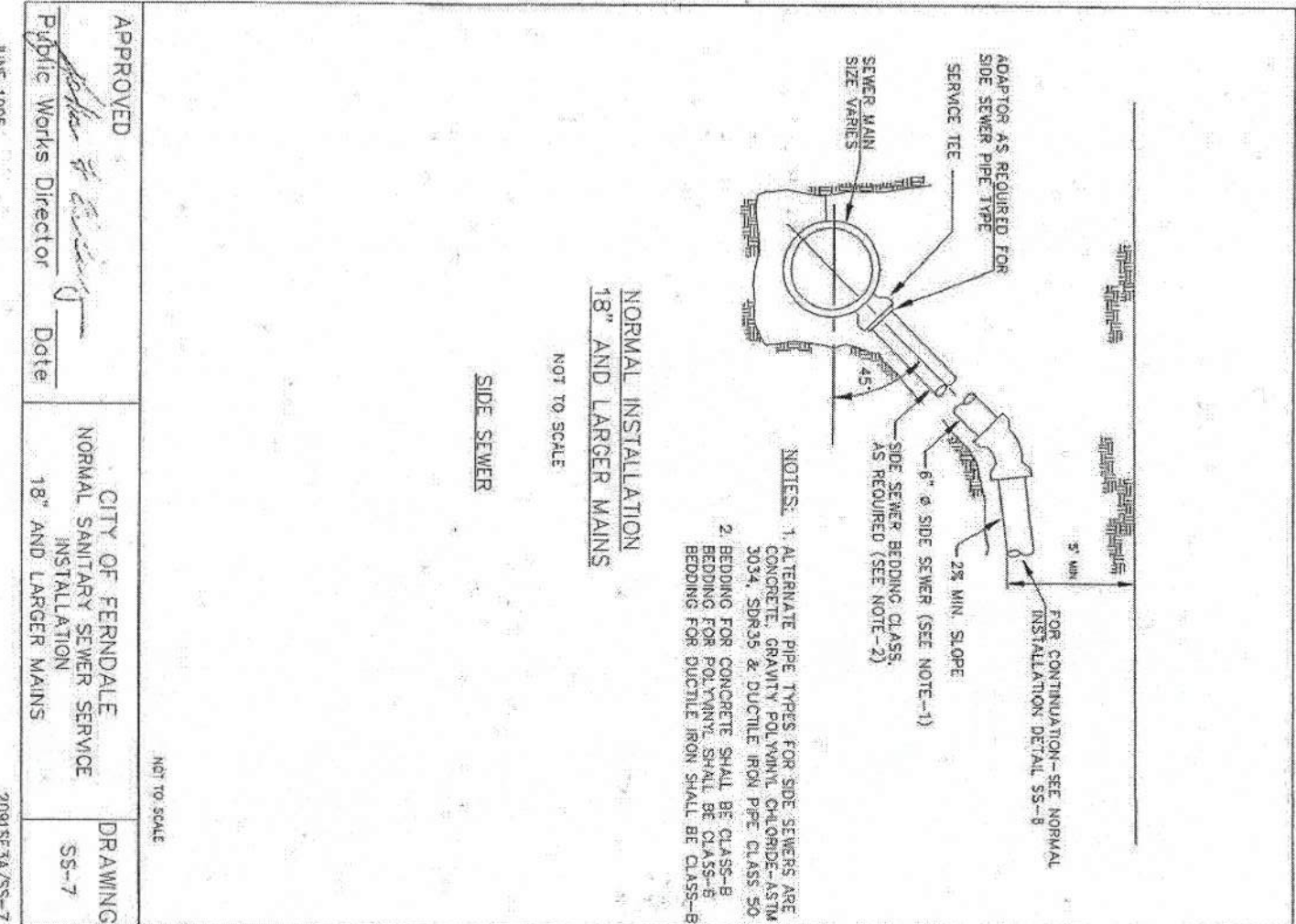
C9

1616

16092

01-05-2018

C9



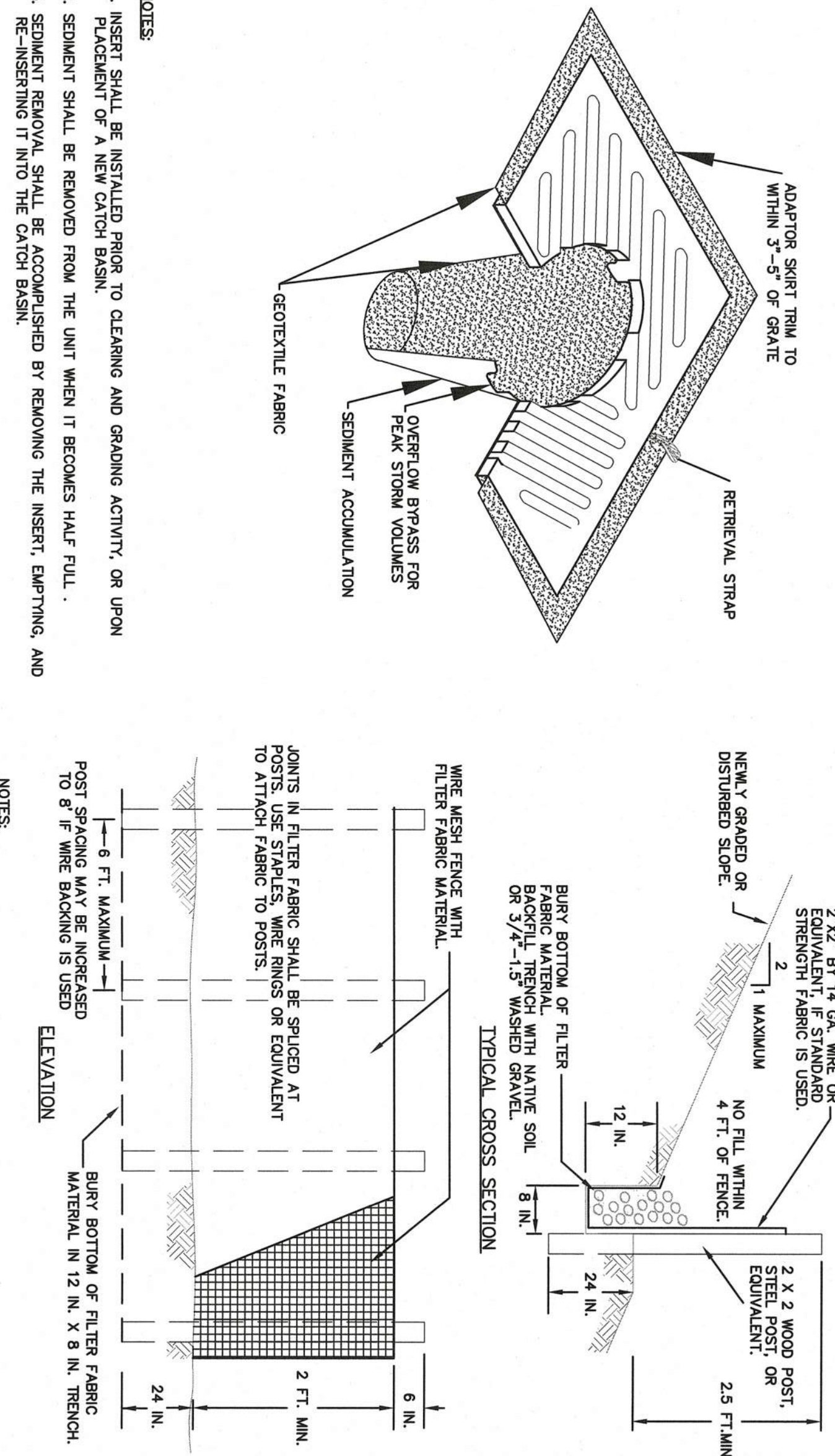
**SEWER SERVICE**

**GRAVITY SEWER CLEAN OUT**

**SAWCUTTING**

**SILT FENCE**

**INLET PROTECTION**



**BMP C152: Sawcutting and Surfacing Pollution Prevention**

**Purpose**

Sawcutting and surfacing operations generate slurry and process water that can contain oil, grease, and other pollutants. If not properly managed, these materials can violate the water quality standards in the receiving water body. This BMP is designed to minimize and eliminate process water and slurry created through sawcutting or surfacing from entering waters of the State.

Utilize these management practices anytime sawcutting or surfacing operations take place. Sawcutting and surfacing operations include, but are not limited to, the following:

- Sawing
- Coring
- Grinding
- Roughening
- Hydro-demolition
- Bridge and road surfacing
- Vacuum slurry and cuttings during cutting and surfacing operations.
- Slurry and cuttings shall not remain on permanent concrete or asphalt pavement overnight.
- Slurry and cuttings shall not drain to any natural or constructed water body.
- Do not allow process water generated during hydro-demolition, surface roughening or similar operations to drain to any natural or constructed drainage conveyance including stormwater systems.
- Dispose process water in a manner that does not violate ground water or surface water quality standards.
- Handle and dispose cleaning waste material and demolition debris in a manner that does not cause contamination of water. Dispose of accepting material from a pick-up sweeper at an appropriate disposal site.

**Inspection and Maintenance**

Continually monitor operations to determine whether slurry, cuttings, or process water could enter waters of the state. If inspections show that a violation could occur, immediately implement preventive measures such as berms, barriers, secondary containment, and vacuum trucks.

**Conditions of Use**

Volume II - Construction Stormwater Pollution Prevention - August 2012  
4-44

**STORMWATER POLLUTION PREVENTION PLAN**

**ELEMENT #1: MARK CLEARING LIMITS**

CLEARING LIMITS ARE LOCATED WITHIN A FULLY CLEARED SITE. THE EXISTING PARCEL IS COMPLETELY COVERED AND MAINTAINED WITH LAWN, WHILE THE ADJACENT ALLEY IS FINISHED WITH GRAVEL SURFACING. PROPOSED DEVELOPMENT WILL DEVELOP THE ENTIRE PARCEL AND ALLEY FRONTAGE.

**ELEMENT #2: ESTABLISH CONSTRUCTION ACCESS**

CONSTRUCTION VEHICLES WILL ACCESS THE SITE FROM ADJACENT PUBLIC STREETS (I.e. ALDER STREET AND SECOND AVENUE). A TYPICAL CONSTRUCTION ENTRANCE IS SPECIFIED IN THE ALLEY WHERE IT CONNECTS TO ALDER STREET. ALL CONSTRUCTION EQUIPMENT (EXCAVATORS, TRUCKS, ETC.) WILL REMAIN WITHIN THE SITE. CONSTRUCTION TRAFFIC THAT WILL ROUTINELY LEAVE THE SITE (I.E. WORK TRUCKS, PERSONAL VEHICLES) WILL BE REQUIRED TO TURN RIGHT ONTO ALDER STREET AND BE REQUIRED TO STOP AT THE END OF EACH DAY. SEDIMENT TRANSPORT TO ROADS FROM THE SITE SHALL BE PREVENTED BY THE USE OF SEDIMENT CONTROLLED SEDIMENT DISPOSAL AREA ON SITE OR REMOVED OFF SITE AND DISPOSED AT AN APPROVED FILL SITE. IF STREET WASHING IS NEEDED, IT WILL ONLY OCCUR AFTER SEDIMENT HAS BEEN REMOVED AS DESCRIBED. THE RESULTING WASH WASTEWATER WOULD THEN BE CONTROLLED BY PUMPING IT BACK ON SITE. ALL CONSTRUCTION ACCESS POINTS WILL BE RESTORED TO PROPOSED CONDITIONS.

WASHINGTON STATE DEPARTMENT OF ECOLOGY BMPs CONSIDERED FOR ELEMENT #2 INCLUDE:

- BMP C105: STABILIZED CONSTRUCTION ENTRANCE - OPTIONAL
- BMP C106: STREET WASHING
- BMP C107: STREET WASHING
- BMP C108: STREET WASHING
- BMP C109: STREET WASHING
- BMP C110: STREET WASHING
- BMP C111: STREET WASHING
- BMP C112: STREET WASHING
- BMP C113: STREET WASHING
- BMP C114: STREET WASHING
- BMP C115: STREET WASHING
- BMP C116: STREET WASHING
- BMP C117: STREET WASHING
- BMP C118: STREET WASHING
- BMP C119: STREET WASHING
- BMP C120: STREET WASHING
- BMP C121: STREET WASHING
- BMP C122: STREET WASHING
- BMP C123: STREET WASHING
- BMP C124: STREET WASHING
- BMP C125: STREET WASHING
- BMP C126: STREET WASHING
- BMP C127: STREET WASHING
- BMP C128: STREET WASHING
- BMP C129: STREET WASHING
- BMP C130: STREET WASHING
- BMP C131: STREET WASHING
- BMP C132: STREET WASHING
- BMP C133: STREET WASHING
- BMP C134: STREET WASHING
- BMP C135: STREET WASHING
- BMP C136: STREET WASHING
- BMP C137: STREET WASHING
- BMP C138: STREET WASHING
- BMP C139: STREET WASHING
- BMP C140: STREET WASHING
- BMP C141: STREET WASHING
- BMP C142: STREET WASHING
- BMP C143: STREET WASHING
- BMP C144: STREET WASHING
- BMP C145: STREET WASHING
- BMP C146: STREET WASHING
- BMP C147: STREET WASHING
- BMP C148: STREET WASHING
- BMP C149: STREET WASHING
- BMP C150: STREET WASHING
- BMP C151: STREET WASHING
- BMP C152: STREET WASHING
- BMP C153: STREET WASHING
- BMP C154: STREET WASHING
- BMP C155: STREET WASHING
- BMP C156: STREET WASHING
- BMP C157: STREET WASHING
- BMP C158: STREET WASHING
- BMP C159: STREET WASHING
- BMP C160: STREET WASHING
- BMP C161: STREET WASHING
- BMP C162: STREET WASHING
- BMP C163: STREET WASHING
- BMP C164: STREET WASHING
- BMP C165: STREET WASHING
- BMP C166: STREET WASHING
- BMP C167: STREET WASHING
- BMP C168: STREET WASHING
- BMP C169: STREET WASHING
- BMP C170: STREET WASHING
- BMP C171: STREET WASHING
- BMP C172: STREET WASHING
- BMP C173: STREET WASHING
- BMP C174: STREET WASHING
- BMP C175: STREET WASHING
- BMP C176: STREET WASHING
- BMP C177: STREET WASHING
- BMP C178: STREET WASHING
- BMP C179: STREET WASHING
- BMP C180: STREET WASHING
- BMP C181: STREET WASHING
- BMP C182: STREET WASHING
- BMP C183: STREET WASHING
- BMP C184: STREET WASHING
- BMP C185: STREET WASHING
- BMP C186: STREET WASHING
- BMP C187: STREET WASHING
- BMP C188: STREET WASHING
- BMP C189: STREET WASHING
- BMP C190: STREET WASHING
- BMP C191: STREET WASHING
- BMP C192: STREET WASHING
- BMP C193: STREET WASHING
- BMP C194: STREET WASHING
- BMP C195: STREET WASHING
- BMP C196: STREET WASHING
- BMP C197: STREET WASHING
- BMP C198: STREET WASHING
- BMP C199: STREET WASHING
- BMP C200: STREET WASHING
- BMP C201: STREET WASHING
- BMP C202: STREET WASHING
- BMP C203: STREET WASHING
- BMP C204: STREET WASHING
- BMP C205: STREET WASHING
- BMP C206: STREET WASHING
- BMP C207: STREET WASHING
- BMP C208: STREET WASHING
- BMP C209: STREET WASHING
- BMP C210: STREET WASHING
- BMP C211: STREET WASHING
- BMP C212: STREET WASHING
- BMP C213: STREET WASHING
- BMP C214: STREET WASHING
- BMP C215: STREET WASHING
- BMP C216: STREET WASHING
- BMP C217: STREET WASHING
- BMP C218: STREET WASHING
- BMP C219: STREET WASHING
- BMP C220: STREET WASHING
- BMP C221: STREET WASHING
- BMP C222: STREET WASHING
- BMP C223: STREET WASHING
- BMP C224: STREET WASHING
- BMP C225: STREET WASHING
- BMP C226: STREET WASHING
- BMP C227: STREET WASHING
- BMP C228: STREET WASHING
- BMP C229: STREET WASHING
- BMP C230: STREET WASHING
- BMP C231: STREET WASHING
- BMP C232: STREET WASHING
- BMP C233: STREET WASHING
- BMP C234: STREET WASHING
- BMP C235: STREET WASHING
- BMP C236: STREET WASHING
- BMP C237: STREET WASHING
- BMP C238: STREET WASHING
- BMP C239: STREET WASHING
- BMP C240: STREET WASHING
- BMP C241: STREET WASHING
- BMP C242: STREET WASHING
- BMP C243: STREET WASHING
- BMP C244: STREET WASHING
- BMP C245: STREET WASHING
- BMP C246: STREET WASHING
- BMP C247: STREET WASHING
- BMP C248: STREET WASHING
- BMP C249: STREET WASHING
- BMP C250: STREET WASHING
- BMP C251: STREET WASHING
- BMP C252: STREET WASHING
- BMP C253: STREET WASHING
- BMP C254: STREET WASHING
- BMP C255: STREET WASHING
- BMP C256: STREET WASHING
- BMP C257: STREET WASHING
- BMP C258: STREET WASHING
- BMP C259: STREET WASHING
- BMP C260: STREET WASHING
- BMP C261: STREET WASHING
- BMP C262: STREET WASHING
- BMP C263: STREET WASHING
- BMP C264: STREET WASHING
- BMP C265: STREET WASHING
- BMP C266: STREET WASHING
- BMP C267: STREET WASHING
- BMP C268: STREET WASHING
- BMP C269: STREET WASHING
- BMP C270: STREET WASHING
- BMP C271: STREET WASHING
- BMP C272: STREET WASHING
- BMP C273: STREET WASHING
- BMP C274: STREET WASHING
- BMP C275: STREET WASHING
- BMP C276: STREET WASHING
- BMP C277: STREET WASHING
- BMP C278: STREET WASHING
- BMP C279: STREET WASHING
- BMP C280: STREET WASHING
- BMP C281: STREET WASHING
- BMP C282: STREET WASHING
- BMP C283: STREET WASHING
- BMP C284: STREET WASHING
- BMP C285: STREET WASHING
- BMP C286: STREET WASHING
- BMP C287: STREET WASHING
- BMP C288: STREET WASHING
- BMP C289: STREET WASHING
- BMP C290: STREET WASHING
- BMP C291: STREET WASHING
- BMP C292: STREET WASHING
- BMP C293: STREET WASHING
- BMP C294: STREET WASHING
- BMP C295: STREET WASHING
- BMP C296: STREET WASHING
- BMP C297: STREET WASHING
- BMP C298: STREET WASHING
- BMP C299: STREET WASHING
- BMP C300: STREET WASHING
- BMP C301: STREET WASHING
- BMP C302: STREET WASHING
- BMP C303: STREET WASHING
- BMP C304: STREET WASHING
- BMP C305: STREET WASHING
- BMP C306: STREET WASHING
- BMP C307: STREET WASHING
- BMP C308: STREET WASHING
- BMP C309: STREET WASHING
- BMP C310: STREET WASHING
- BMP C311: STREET WASHING
- BMP C312: STREET WASHING
- BMP C313: STREET WASHING
- BMP C314: STREET WASHING
- BMP C315: STREET WASHING
- BMP C316: STREET WASHING
- BMP C317: STREET WASHING
- BMP C318: STREET WASHING
- BMP C319: STREET WASHING
- BMP C320: STREET WASHING
- BMP C321: STREET WASHING
- BMP C322: STREET WASHING
- BMP C323: STREET WASHING
- BMP C324: STREET WASHING
- BMP C325: STREET WASHING
- BMP C326: STREET WASHING
- BMP C327: STREET WASHING
- BMP C328: STREET WASHING
- BMP C329: STREET WASHING
- BMP C330: STREET WASHING
- BMP C331: STREET WASHING
- BMP C332: STREET WASHING
- BMP C333: STREET WASHING
- BMP C334: STREET WASHING
- BMP C335: STREET WASHING
- BMP C336: STREET WASHING
- BMP C337: STREET WASHING
- BMP C338: STREET WASHING
- BMP C339: STREET WASHING
- BMP C340: STREET WASHING
- BMP C341: STREET WASHING
- BMP C342: STREET WASHING
- BMP C343: STREET WASHING
- BMP C344: STREET WASHING
- BMP C345: STREET WASHING
- BMP C346: STREET WASHING
- BMP C347: STREET WASHING
- BMP C348: STREET WASHING
- BMP C349: STREET WASHING
- BMP C350: STREET WASHING
- BMP C351: STREET WASHING
- BMP C352: STREET WASHING
- BMP C353: STREET WASHING
- BMP C354: STREET WASHING
- BMP C355: STREET WASHING
- BMP C356: STREET WASHING
- BMP C357: STREET WASHING
- BMP C358: STREET WASHING
- BMP C359: STREET WASHING
- BMP C360: STREET WASHING
- BMP C361: STREET WASHING
- BMP C362: STREET WASHING
- BMP C363: STREET WASHING
- BMP C364: STREET WASHING
- BMP C365: STREET WASHING
- BMP C366: STREET WASHING
- BMP C367: STREET WASHING
- BMP C368: STREET WASHING
- BMP C369: STREET WASHING
- BMP C370: STREET WASHING
- BMP C371: STREET WASHING
- BMP C372: STREET WASHING
- BMP C373: STREET WASHING
- BMP C374: STREET WASHING
- BMP C375: STREET WASHING
- BMP C376: STREET WASHING
- BMP C377: STREET WASHING
- BMP C378: STREET WASHING
- BMP C379: STREET WASHING
- BMP C380: STREET WASHING
- BMP C381: STREET WASHING
- BMP C382: STREET WASHING
- BMP C383: STREET WASHING
- BMP C384: STREET WASHING
- BMP C385: STREET WASHING
- BMP C386: STREET WASHING
- BMP C387: STREET WASHING
- BMP C388: STREET WASHING
- BMP C389: STREET WASHING
- BMP C390: STREET WASHING
- BMP C391: STREET WASHING
- BMP C392: STREET WASHING
- BMP C393: STREET WASHING
- BMP C394: STREET WASHING
- BMP C395: STREET WASHING
- BMP C396: STREET WASHING
- BMP C397: STREET WASHING
- BMP C398: STREET WASHING
- BMP C399: STREET WASHING
- BMP C400: STREET WASHING
- BMP C401: STREET WASHING
- BMP C402: STREET WASHING
- BMP C403: STREET WASHING
- BMP C404: STREET WASHING
- BMP C405: STREET WASHING
- BMP C406: STREET WASHING
- BMP C407: STREET WASHING
- BMP C408: STREET WASHING
- BMP C409: STREET WASHING
- BMP C410: STREET WASHING
- BMP C411: STREET WASHING
- BMP C412: STREET WASHING
- BMP C413: STREET WASHING
- BMP C414: STREET WASHING
- BMP C415: STREET WASHING
- BMP C416: STREET WASHING
- BMP C417: STREET WASHING
- BMP C418: STREET WASHING
- BMP C419: STREET WASHING
- BMP C420: STREET WASHING
- BMP C421: STREET WASHING
- BMP C422: STREET WASHING
- BMP C423: STREET WASHING
- BMP C424: STREET WASHING
- BMP C425: STREET WASHING
- BMP C426: STREET WASHING
- BMP C427: STREET WASHING
- BMP C428: STREET WASHING
- BMP C429: STREET WASHING
- BMP C430: STREET WASHING
- BMP C431: STREET WASHING
- BMP C432: STREET WASHING
- BMP C433: STREET WASHING
- BMP C434: STREET WASHING
- BMP C435: STREET WASHING
- BMP C436: STREET WASHING
- BMP C437: STREET WASHING
- BMP C438: STREET WASHING
- BMP C439: STREET WASHING
- BMP C440: STREET WASHING
- BMP C441: STREET WASHING
- BMP C442: STREET WASHING
- BMP C443: STREET WASHING
- BMP C444: STREET WASHING
- BMP C445: STREET WASHING
- BMP C446: STREET WASHING
- BMP C447: STREET WASHING
- BMP C448: STREET WASHING
- BMP C449: STREET WASHING
- BMP C450: STREET WASHING
- BMP C451: STREET WASHING
- BMP C452: STREET WASHING
- BMP C453: STREET WASHING
- BMP C454: STREET WASHING
- BMP C455: STREET WASHING
- BMP C456: STREET WASHING
- BMP C457: STREET WASHING
- BMP C458: STREET WASHING
- BMP C459: STREET WASHING
- BMP C460: STREET WASHING
- BMP C461: STREET WASHING
- BMP C462: STREET WASHING
- BMP C463: STREET WASHING
- BMP C464: STREET WASHING
- BMP C465: STREET WASHING
- BMP C466: STREET WASHING
- BMP C467: STREET WASHING
- BMP C468: STREET WASHING
- BMP C469: STREET WASHING
- BMP C470: STREET WASHING
- BMP C471: STREET WASHING
- BMP C472: STREET WASHING
- BMP C473: STREET WASHING
- BMP C474: STREET WASHING
- BMP C475: STREET WASHING
- BMP C476: STREET WASHING
- BMP C477: STREET WASHING
- BMP C478: STREET WASHING
- BMP C479: STREET WASHING
- BMP C480: STREET WASHING
- BMP C481: STREET WASHING
- BMP C482: STREET WASHING
- BMP C483: STREET WASHING
- BMP C484: STREET WASHING
- BMP C485: STREET WASHING
- BMP C486: STREET WASHING
- BMP C487: STREET WASHING
- BMP C488: STREET WASHING
- BMP C489: STREET WASHING
- BMP C490: STREET WASHING
- BMP C491: STREET WASHING
- BMP C492: STREET WASHING
- BMP C493: STREET WASHING
- BMP C494: STREET WASHING
- BMP C495: STREET WASHING
- BMP C496: STREET WASHING
- BMP C497: STREET WASHING
- BMP C498: STREET WASHING
- BMP C499: STREET WASHING
- BMP C500: STREET WASHING
- BMP C501: STREET WASHING
- BMP C502: STREET WASHING
- BMP C503: STREET WASHING
- BMP C504: STREET WASHING
- BMP C505: STREET WASHING
- BMP C506: STREET WASHING
- BMP C507: STREET WASHING
- BMP C508: STREET WASHING
- BMP C509: STREET WASHING
- BMP C510: STREET WASHING
- BMP C511: STREET WASHING
- BMP C512: STREET WASHING
- BMP C513: STREET WASHING
- BMP C514: STREET WASHING
- BMP C515: STREET WASHING
- BMP C516: STREET WASHING
- BMP C517: STREET WASHING
- BMP C518: STREET WASHING
- BMP C519: STREET WASHING
- BMP C520: STREET WASHING
- BMP C521: STREET WASHING
- BMP C522: STREET WASHING
- BMP C523: STREET WASHING
- BMP C524: STREET WASHING
- BMP C525: STREET WASHING
- BMP C526: STREET WASHING
- BMP C527: STREET WASHING
- BMP C528: STREET WASHING
- BMP C529: STREET WASHING
- BMP C530: STREET WASHING
- BMP C531: STREET WASHING
- BMP C532: STREET WASHING
- BMP C533: STREET WASHING
- BMP C534: STREET WASHING
- BMP C535: STREET WASHING
- BMP C536: STREET WASHING
- BMP C537: STREET WASHING
- BMP C538: STREET WASHING
- BMP C539: STREET WASHING
- BMP C540: STREET WASHING
- BMP C541: STREET WASHING
- BMP C542: STREET WASHING
- BMP C543: STREET WASHING
- BMP C544: STREET WASHING
- BMP C545: STREET WASHING
- BMP C546: STREET WASHING
- BMP C547: STREET WASHING
- BMP C548: STREET WASHING
- BMP C549: STREET WASHING
- BMP C550: STREET WASHING
- BMP C551: STREET WASHING
- BMP C552: STREET WASHING
- BMP C553: STREET WASHING
- BMP C554: STREET WASHING
- BMP C555: STREET WASHING
- BMP C556: STREET WASHING
- BMP C557: STREET WASHING
- BMP C558: STREET WASHING
- BMP C559: STREET WASHING
- BMP C560: STREET WASHING
- BMP C561: STREET WASHING
- BMP C562: STREET WASHING
- BMP C563: STREET WASHING
- BMP C564: STREET WASHING
- BMP C565: STREET WASHING
- BMP C566: STREET WASHING
- BMP C567: STREET WASHING
- BMP C568: STREET WASHING
- BMP C569: STREET WASHING
- BMP C570: STREET WASHING
- BMP C571: STREET WASHING
- BMP C572: STREET WASHING
- BMP C573: STREET WASHING
- BMP C574: STREET WASHING
- BMP C575: STREET WASHING
- BMP C576: STREET WASHING
- BMP C577: STREET WASHING
- BMP C578: STREET WASHING
- BMP C579: STREET WASHING
- BMP C580: STREET WASHING
- BMP C581: STREET WASHING
- BMP C582: STREET WASHING
- BMP C583: STREET WASHING
- BMP C584: STREET WASHING
- BMP C585: STREET WASHING
- BMP C586: STREET WASHING
- BMP C587: STREET WASHING
- BMP C588: STREET WASHING
- BMP C589: STREET WASHING
- BMP C590: STREET WASHING
- BMP C591: STREET WASHING
- BMP C592: STREET WASHING
- BMP C593: STREET WASHING
- BMP C594: STREET WASHING
- BMP C595: STREET WASHING
- BMP C596: STREET WASHING
- BMP C597: STREET WASHING
- BMP C598: STREET WASHING
- BMP C599: STREET WASHING
- BMP C600: STREET WASHING
- BMP C601: STREET WASHING
- BMP C602: STREET WASHING
- BMP C603: STREET WASHING
- BMP C604: STREET WASHING
- BMP C605: STREET WASHING
- BMP C606: STREET WASHING
- BMP C607: STREET WASHING
- BMP C608: STREET WASHING
- BMP C609: STREET WASHING
- BMP C610: STREET WASHING
- BMP C611: STREET WASHING
- BMP C612: STREET WASHING
- BMP C613: STREET WASHING
- BMP C614: STREET WASHING
- BMP C615: STREET WASHING
- BMP C616: STREET WASHING
- BMP C617: STREET WASHING
- BMP C618: STREET WASHING
- BMP C619: STREET WASHING
- BMP C620: STREET WASHING
- BMP C621: STREET WASHING
- BMP C622: STREET WASHING
- BMP C623: STREET WASHING
- BMP C624: STREET WASHING
- BMP C625: STREET WASHING
- BMP C626: STREET WASHING
- BMP C627: STREET WASHING
- BMP C628: STREET WASHING
- BMP C629: STREET WASHING
- BMP C630: STREET WASHING
- BMP C631: STREET WASHING
- BMP C632: STREET WASHING
- BMP C633: STREET WASHING
- BMP C634: STREET WASHING
- BMP C635: STREET WASHING
- BMP C636: STREET WASHING
- BMP C637: STREET WASHING
- BMP C638: STREET WASHING
- BMP C639: STREET WASHING
- BMP C640: STREET WASHING
- BMP C641: STREET WASHING
- BMP C642: STREET WASHING
- BMP C643: STREET WASHING
- BMP C644: STREET WASHING
- BMP C645: STREET WASHING
- BMP C646: STREET WASHING
- BMP C647: STREET WASHING
- BMP C648: STREET WASHING
- BMP C649: STREET WASHING
- BMP C650: STREET WASHING
- BMP C651: STREET WASHING
- BMP C652: STREET WASHING
- BMP C653: STREET WASHING
- BMP C654: STREET WASHING
- BMP C655: STREET WASHING
- BMP C656: STREET WASHING
- BMP C657: STREET WASHING
- BMP C658: STREET WASHING
- BMP C659: STREET WASHING
- BMP C660: STREET WASHING
- BMP C661: STREET WASHING
- BMP C662: STREET WASHING
- BMP C663: STREET WASHING
- BMP C664: STREET WASHING
- BMP C665: STREET WASHING
- BMP C666: STREET WASHING
- BMP C667: STREET WASHING
- BMP C668: STREET WASHING
- BMP C669: STREET WASHING
- BMP C670: STREET WASHING
- BMP C671: STREET WASHING
- BMP C672: STREET WASHING
- BMP C673: STREET WASHING
- BMP C674: STREET WASHING
- BMP C675: STREET WASHING
- BMP C676: STREET WASHING
- BMP C677: STREET WASHING
- BMP C678: STREET WASHING
- BMP C679: STREET WASHING
- BMP C680: STREET WASHING
- BMP C681: STREET WASHING
- BMP C682: STREET WASHING
- BMP C683: STREET WASHING
- BMP C684: STREET WASHING
- BMP C685: STREET WASHING
- BMP C686: STREET WASHING
- BMP C687: STREET WASHING
- BMP C688: STREET WASHING
- BMP C689: STREET WASHING
- BMP C690: STREET WASHING
- BMP C691: STREET WASHING
- BMP C692: STREET WASHING
- BMP C693: STREET WASHING
- BMP C694: STREET WASHING
- BMP C695: STREET WASHING
- BMP C696: STREET WASHING
- BMP C697: STREET WASHING
- BMP C698: STREET WASHING
- BMP C699: STREET WASHING
- BMP C700: STREET WASHING
- BMP C701: STREET WASHING
- BMP C702: STREET WASHING
- BMP C703: STREET WASHING
- BMP C704: STREET WASHING
- BMP C705: STREET WASHING
- BMP C706: STREET WASHING
- BMP C707: STREET WASHING
- BMP C708: STREET WASHING
- BMP C709: STREET WASHING
- BMP C710: STREET WASHING
- BMP C711: STREET WASHING
- BMP C712: STREET WASHING
- BMP C713: STREET WASHING
- BMP C714: STREET WASHING
- BMP C715: STREET WASHING
- BMP C716: STREET WASHING
- BMP C717: STREET WASHING
- BMP C718: STREET WASHING
- BMP C719: STREET WASHING
- BMP C720: STREET WASHING
- BMP C721: STREET WASHING
- BMP C722: STREET WASHING
- BMP C723: STREET WASHING
- BMP C724: STREET WASHING
- BMP C725: STREET WASHING
- BMP C726: STREET WASHING
- BMP C727: STREET WASHING
- BMP C728: STREET WASHING
- BMP C729: STREET WASHING
- BMP C730: STREET WASHING
- BMP C731: STREET WASHING
- BMP C732: STREET WASHING
- BMP C733: STREET WASHING
- BMP C734: STREET WASHING
- BMP C735: STREET WASHING
- BMP C736: STREET WASHING
- BMP C737: STREET WASHING
- BMP C738: STREET WASHING
- BMP C739: STREET WASHING
- BMP C740: STREET WASHING
- BMP C741: STREET WASHING
- BMP C742: STREET WASHING
- BMP C743: STREET WASHING
- BMP C744: STREET WASHING
- BMP C745: STREET WASHING
- BMP C746: STREET WASHING
- BMP C747: STREET WASHING
- BMP C748: STREET WASHING
- BMP C749: STREET WASHING
- BMP C750: STREET WASHING
- BMP C751: STREET WASHING
- BMP C752: STREET WASHING
- BMP C753: STREET WASHING
- BMP C



