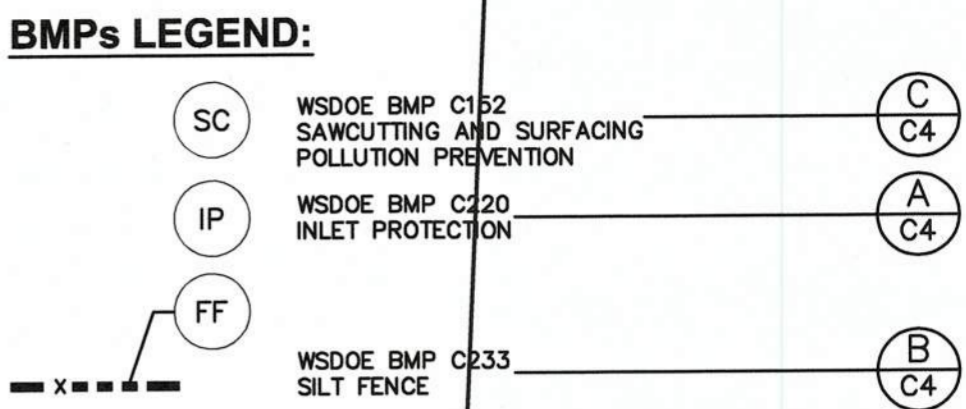
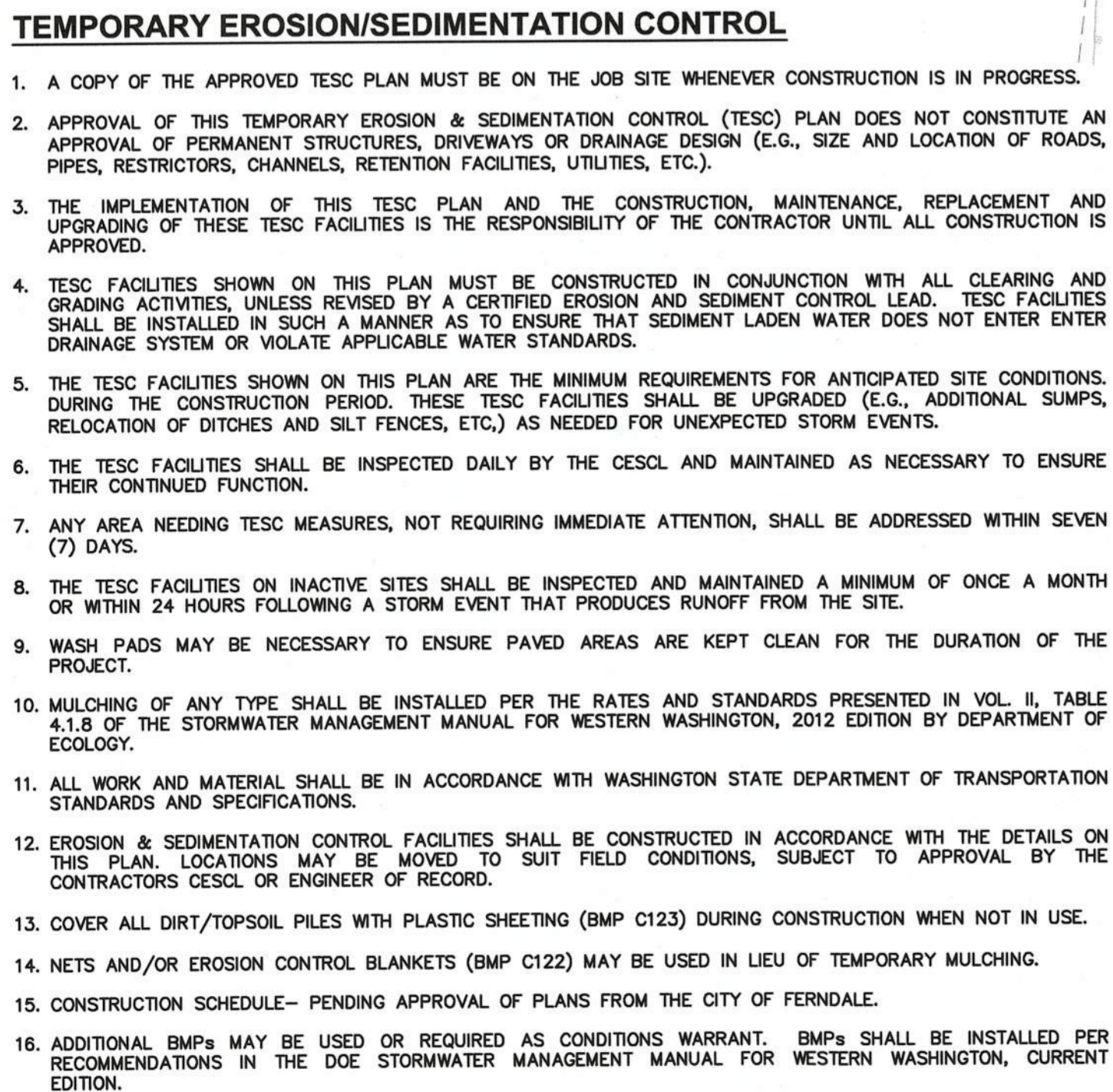


06/15/2016

NOTE:
AS-BUILT STORMWATER AND UTILITY INFORMATION
SHOWN PROVIDED BY CHRISTIE & CHRISTIE LAND
SURVEYING, INC INFORMATION RECEIVED 12/19/2017

00639.002 KB 3/16/18



CONSTRUCTION SCHEDULING NOTE:
CONTRACTOR SHALL MONITOR WEATHER CONDITIONS AND FORECASTS DURING CONSTRUCTION. THE AMOUNT OF SOIL THAT MAY BE EXPOSED AT ANY TIME DEPENDS ON THE CONTRACTOR'S AVAILABLE CREW, MATERIALS, AND EQUIPMENT. CONTRACTOR SHALL PROTECT ALL EXPOSED SOILS INCLUDING TRENCHES AND STOCKPILES) CAN BE COMPLETELY COVERED AND STABILIZED PRIOR TO ANY SIGNIFICANT RAINFALL EVENT ON SITE. WET WEATHER WORK SHOULD BE AVOIDED IF POSSIBLE. CONSTRUCT ROAD IMPROVEMENTS IN MULTIPLE PHASES OR SEGMENTS IF NECESSARY.

ENGINEER'S CERTIFICATION:
"I HEREBY CERTIFY THAT THE IMPROVEMENTS OF
5828 2ND AVENUE HAVE BEEN INSPECTED BY
FREELAND & ASSOCIATES, INC. AND CONSTRUCTED
IN CONFORMANCE WITH THE PLANS APPROVED BY
PUBLIC WORKS DIRECTOR FOR SAID DEVELOPMENT
AND THE GENERAL SPECIFICATIONS ADOPTED BY
THE CITY OF FERNDALE DEPARTMENT OF PUBLIC
WORKS."

AS-BUILT DRAWING

NOTE:
AS-BUILT STORMWATER AND UTILITY INFORMATION
SHOWN PROVIDED BY CHRISTIE & CHRISTIE LAND
SURVEYING, INC INFORMATION RECEIVED 12/19/2017



220 West Champion Street, Suite 200 t: 360.650.1408
 Bellingham, WA 98225 f: 360.650.1401

**FREELAND
 & ASSOCIATES**

[illegible]

**HAVEN COMMUNITIES,
LLC**
2417 MAIN STREET; SUITE 102
FERNDALE, WA 98248

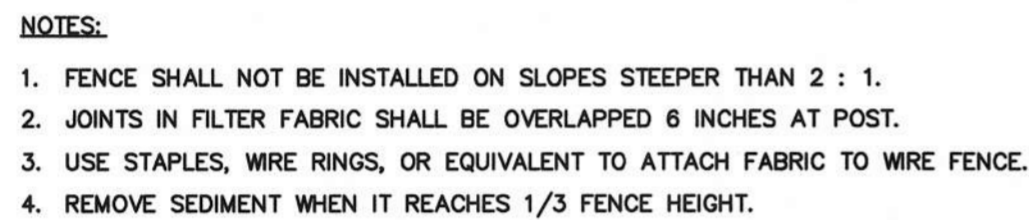
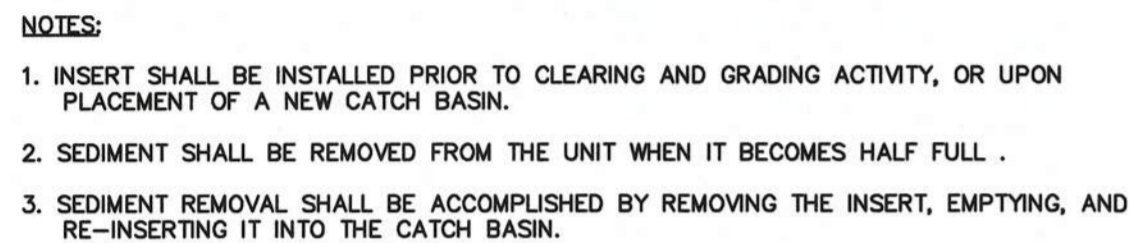
**CALL BEFORE YOU DIG
FOR BURIED UTILITY LOCATIONS**
1-800-424-5555

PROJECT LOCATION:	5828 2ND AVENUE	
	5828 2ND AVENUE FERNDALE, WA 98248	
DRAWING #:	15240AB1.DWG	DRAWN BY:
DESIGNED BY:	JPS	CHECKED BY:
		MDB

SHEET _____ **CONTENTS:**



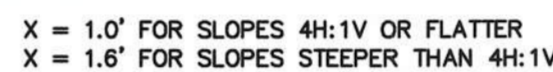
JOB #: 15240	DATE: 3-8-2018
SCALE: HORIZ: 1"=10' VERT: N/A	SHEET: C3



Maintenance Standards

Continually monitor operations to determine whether slurry, cuttings, or process water could enter waters of the state. If inspections show that a violation of water quality standards could occur, stop operations and immediately implement preventive measures such as berms, barriers, secondary containment, and vacuum trucks.

Volume II – Construction Stormwater Pollution Prevention - August 2012
4-44



NOTE:
COARSE COMPOST CONSISTS OF ORGANIC MATTER (PEAT FREE). PARTICLE SIZE SHALL BE GRADED FROM 1" TO 4" (SHREDDED HOG-FUEL OR SIMILAR).

ENGINEER'S CERTIFICATION:
"I HEREBY CERTIFY THAT THE IMPROVEMENTS OF
5828 2ND AVENUE HAVE BEEN INSPECTED BY
FREELAND & ASSOCIATES, INC. AND CONSTRUCTED
IN CONFORMANCE WITH THE PLANS APPROVED BY
PUBLIC WORKS DIRECTOR FOR SAID DEVELOPMENT
AND THE GENERAL SPECIFICATIONS ADOPTED BY
THE CITY OF FERNDALE DEPARTMENT OF PUBLIC
WORKS."

BY: hba 82 DATE: 3-8-18

AS-BUILT DRAWING

NOTE:
AS-BUILT STORMWATER AND UTILITY INFORMATION
SHOWN PROVIDED BY CHRISTIE & CHRISTIE LAND
SURVEYING, INC INFORMATION RECEIVED 12/19/2017



HAVEN COMMUNITIES, LLC 2417 MAIN STREET, SUITE 102 FERDALE, WA 98248	REV. DATE:	DESCRIPTION:	BY:
CALL BEFORE YOU DIG FOR BURIED UTILITY LOCATIONS 1-800-424-5555			

MAINTENANCE OF THE CONSTRUCTION SWPPP
THE CONSTRUCTION SWPPP WILL BE RETAINED ON-SITE AND WILL BE UPDATED ON A REGULAR
BASIS. MODIFICATIONS TO THE CONSTRUCTION SWPPP WILL BE MADE WHENEVER THERE IS A
SIGNIFICANT CHANGE IN THE DESIGN, CONSTRUCTION, OPERATION, OR MAINTENANCE OF ANY
BMP.

MAR 12 2018

BY _____
CITY OF FERRDALE
PUBLIC WORKS DEPARTMENT

TEMPORARY EROSION & SEDIMENT CONTROL DETAILS & NOTES



JOB #: 15240	DATE: 3-8-2018
SCALE: HORIZ: N/A VERT: N/A	SHEET: C4



220 West Champion Street, Suite 200 t: 360.650.1408
Bellingham, WA 98225 f: 360.650.1401

F R E E L A N D
& A S S O C I A T E S

[illegible]

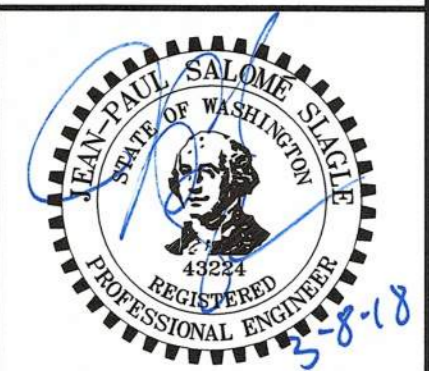
**HAVEN COMMUNITIES,
LLC**
2417 MAIN STREET; SUITE 102
FERNDALE, WA 98248

**CALL BEFORE YOU DIG
FOR BURIED UTILITY LOCATIONS**
1-800-424-5555

5828 2ND AVENUE 5828 2ND AVENUE FERNDALE, WA 98248	DRAWN BY:	EJP
	CHECKED BY:	MDB

PROJECT LOCATION:	
DRAWING #:	15240AB1.DWG
DESIGNED BY:	JP

SITE & UTILITY SERVICE PLAN



JOB #: 15240	DATE: 3-8-2018
SCALE: HORIZ: 1"=10' VERT: N/A	SHEET: C5

REMOVE EXISTING WATER SERVICE.
COORDINATE WITH CITY OF FERNDALE
FOR REMOVAL METHOD AND EXTENTS.

CONNECT TO EXISTING
SANITARY SEWER SERVICE.
INSTALL CLEAN OUT AT
PROPERTY LINE.

RIM EL. 37.81'
CEN. CHANNEL
EL. 28.56'

STA: 0+00.00
N: 680797.49
E: 1217553.66

TYPE 2 CB
STA: 0+25.47, 9.07' R
RIM EL. 36.34' (AB)
(W) 24" CPP OUT IE 31.04'
(N) 12" CPP IN IE 31.23'
(E) 24" CPP IN IE 32.53'

CEN. RIM EL. 36.45'
(S) 12" CPP OUT IE 31.80

REMOVE EXISTING SERVICE POLE, ASSOCIATED
OVERHEAD LINES, & STREET LIGHT.
PSE/INTOLIGHT TO DETERMINE SUITABLE
LOCATION FOR REMOVED STREET LIGHT PER
CITY STANDARDS.

OFFICE SPACE
FFE: 36.75

RESIDENTIAL UNIT

**RESIDENTIAL
UNITS**
FFE: 37.50

PARTIALLY
ENCLOSED
COURTYARD

CONCRETE PATIOS,
SEE ARCHITECTURAL
PLANS FOR DETAILS
(TYPICAL)

POST INDICATOR VALVE AND
DOUBLE CHECK VALVE TO BE
LOCATED INSIDE SPRINKLER
RISER ROOM

SEE ARCHITECTURAL
PLANS FOR FENCE
TYPES AND HEIGHTS -
(TYPICAL)

SEE FRONTAGE IMPROVEMENT PLANS ON
— SHEET C6 FOR ALL ROAD & SIDEWALK
IMPROVEMENTS.

PROPOSED WATER MAIN REPLACEMENT
TO UPSIZE FROM EXISTING 8"Ø TO 12"Ø.
SEE SHEET C7 FOR PLAN & PROFILE.

STA: 1+27.10,
RIM EL
(NE) 24" CMP IN IE.
(E) 12" CONC. IE.
COULD NOT VER
WATER LEVEL EL.

EATON AVENUE

TYPE 2 CB
STA: 2+05.03, 23.17' L
RIM EL. 36.49' (AB)
(E) 24" CMP IE. 33.08'
(N) 18" CPP IE. 33.08'
(W) 24" CMP IE. 32.98'
BTM. STRUCTURE EL. 31.30'

STA: 2+25.00
N: 680787.49
E: 1217778.44

REMOVE EXISTING
OVERHEAD TELEPHONE LINE
5' RIGHT OF WAY DEDICATION
TO THE CITY OF FERNDALE
PER AF# 2017-0700980

REMOVE EXISTING SANITARY
SEWER SERVICE, PLUG TEE
WITH FACTORY PVC PLUG.

AS BUILT FENCE LOCATION. PREVIOUS
EXISTING FENCE IN ALLEY REMOVED

ENGINEER'S CERTIFICATION:
 "I HEREBY CERTIFY THAT THE IMPROVEMENTS OF
 5828 2ND AVENUE HAVE BEEN INSPECTED BY
 FREELAND & ASSOCIATES, INC. AND CONSTRUCTED
 IN CONFORMANCE WITH THE PLANS APPROVED BY
 PUBLIC WORKS DIRECTOR FOR SAID DEVELOPMENT
 AND THE GENERAL SPECIFICATIONS ADOPTED BY
 THE CITY OF FERNDALE DEPARTMENT OF PUBLIC
 WORKS."

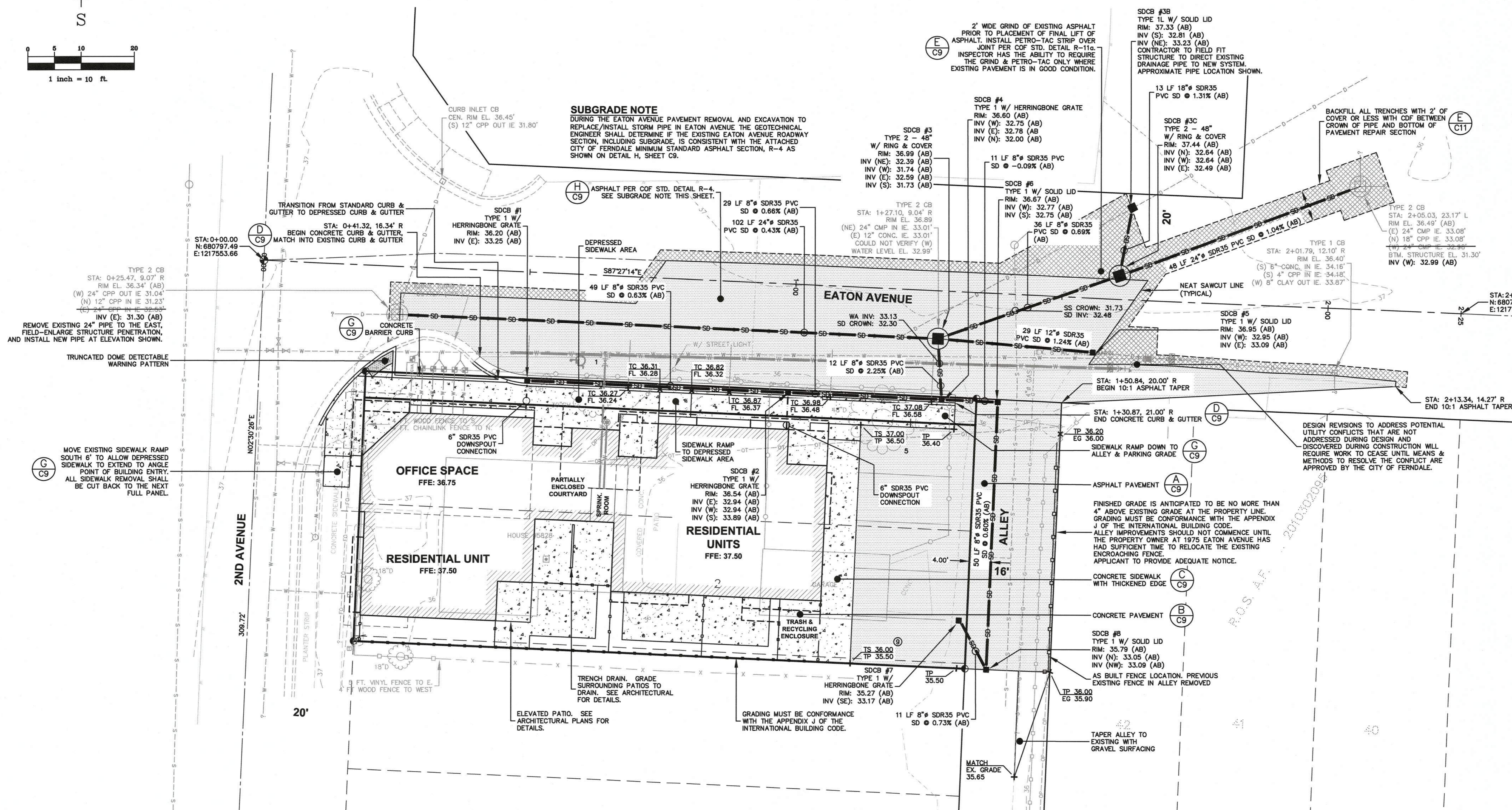
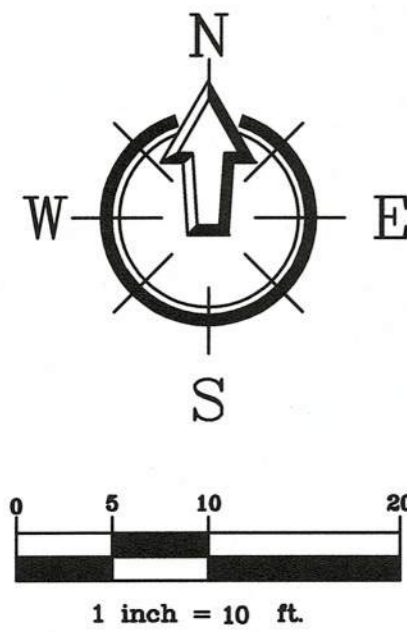
BY: [Signature] DATE: 3-8-18

APPROVED
MAR 12 2018

BY CITY OF FERNDALE
PUBLIC WORKS DEPARTMENT

AS-BUILT DRAWING

NOTE:
AS-BUILT STORMWATER AND UTILITY INFORMATION
SHOWN PROVIDED BY CHRISTIE & CHRISTIE LAND
SURVEYING, INC INFORMATION RECEIVED 12/19/2017



ENGINEER'S CERTIFICATION:
"I HEREBY CERTIFY THAT THE IMPROVEMENTS OF
5828 2ND AVENUE HAVE BEEN INSPECTED BY
FREELAND & ASSOCIATES, INC. AND CONSTRUCTED
IN CONFORMANCE WITH THE PLANS APPROVED BY
PUBLIC WORKS DIRECTOR FOR SAID DEVELOPMENT
AND THE GENERAL SPECIFICATIONS ADOPTED BY
THE CITY OF FERNDALE DEPARTMENT OF PUBLIC
WORKS."

BY:  DATE: 3-8-18

APPROVED
MAR 12 2018

BY CITY OF FERNDALE
PUBLIC WORKS DEPARTMENT

AS-BUILT DRAWING

NOTE:
AS-BUILT STORMWATER AND UTILITY INFORMATION
SHOWN PROVIDED BY CHRISTIE & CHRISTIE LAND
SURVEYING, INC INFORMATION RECEIVED 12/19/2017



220 West Champion Street, Suite 200 t: 360.650.1408
 Bellingham, WA 98225 f: 360.650.1401

FREELAND
 & ASSOCIATES

[illegible]

**HAVEN COMMUNITIES,
LLC**
2417 MAIN STREET, SUITE 102
FERNDALE, WA 98248

**CALL BEFORE YOU DIG
FOR BURIED UTILITY LOCATIONS**
1-800-424-5555

5828 2ND AVENUE
5828 2ND AVENUE
FERNDALF WA 98248

DRAWING #:	DRAWN BY:
------------	-----------

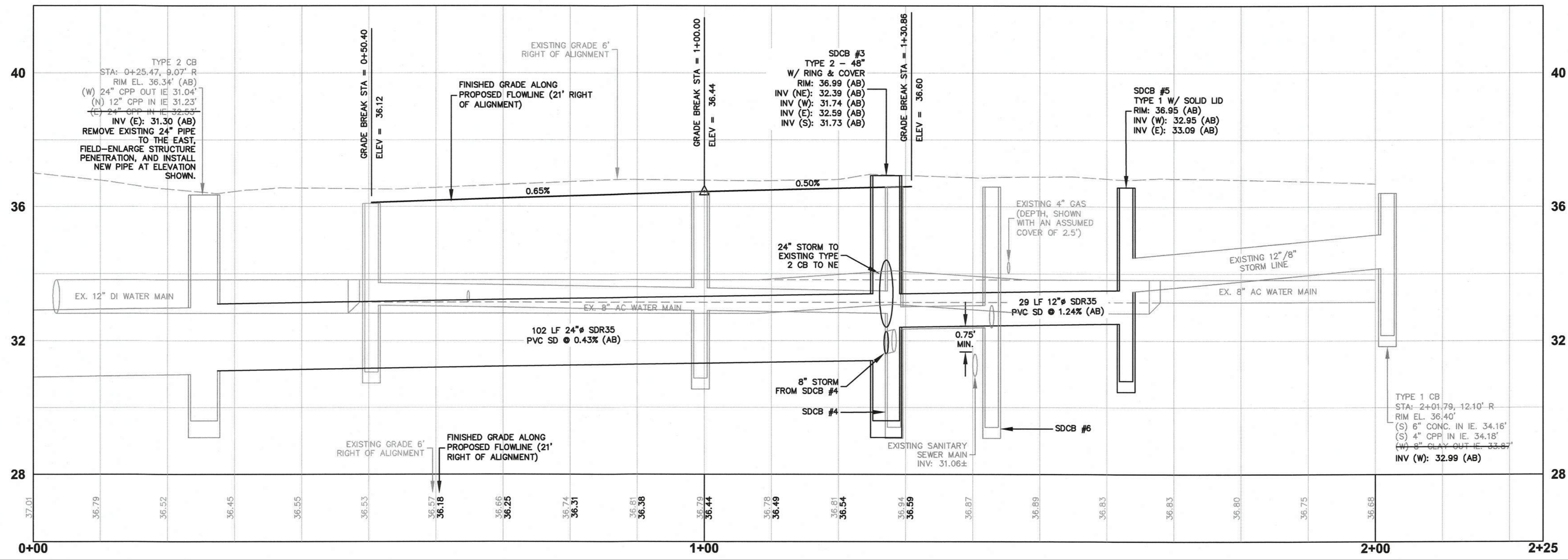
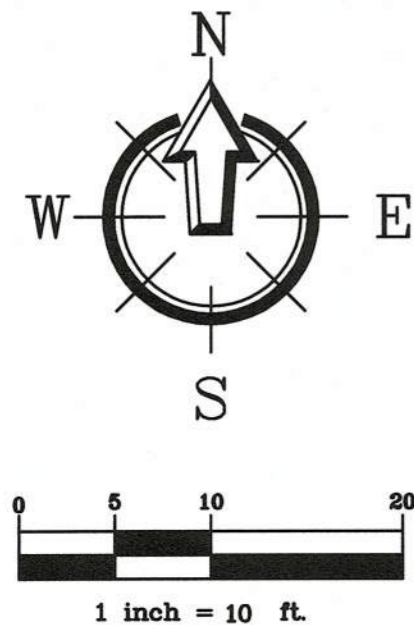
DRAWING #:	DRAWN BY:
------------	-----------

DRAWING #:	DRAWN BY:
------------	-----------

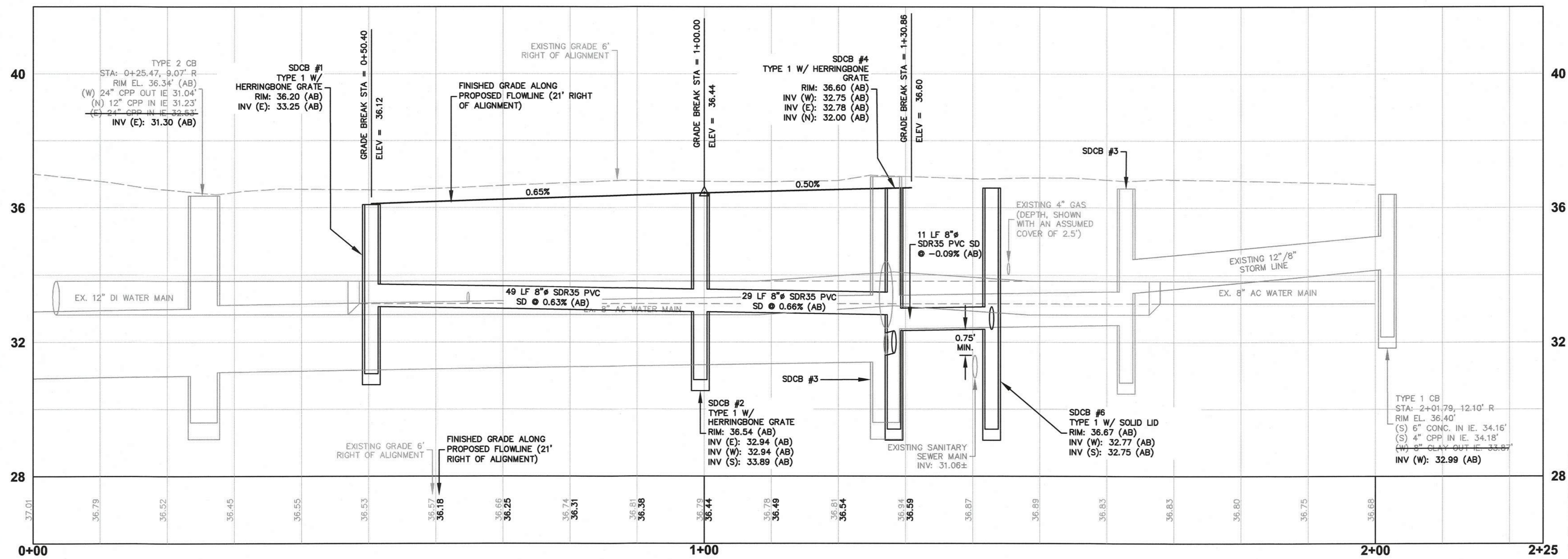
FRONTAGE IMPROVEMENT, PAVING, GRADING, & DRAINAGE PLAN



JOB #: 15240	DATE: 3-8-2018
SCALE: HORIZ: 1"=10' VERT: N/A	SHEET: C6



EATON AVENUE CONVEYANCE PROFILE
H: 1" = 10', V: 1" = 2'



EATON AVENUE FRONTAGE IMPROVEMENT PROFILE
H: 1" = 10', V: 1" = 2'

ENGINEER'S CERTIFICATION:
"I HEREBY CERTIFY THAT THE IMPROVEMENTS OF 5828 2ND AVENUE HAVE BEEN INSPECTED BY FREELAND & ASSOCIATES, INC. AND CONSTRUCTED IN CONFORMANCE WITH THE PLANS APPROVED BY PUBLIC WORKS DIRECTOR FOR SAID DEVELOPMENT AND THE GENERAL SPECIFICATIONS ADOPTED BY THE CITY OF FERDALE DEPARTMENT OF PUBLIC WORKS."

BY: *[Signature]* DATE: 3-8-18

APPROVED
MAR 13 2018

BY: *[Signature]*
CITY OF FERDALE
PUBLIC WORKS DEPARTMENT

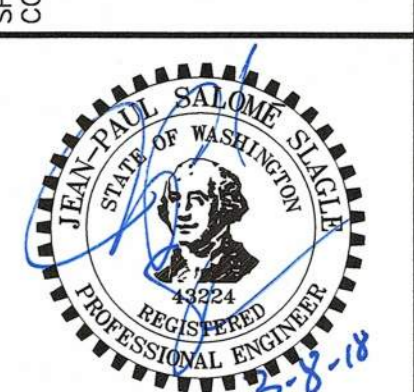
AS-BUILT DRAWING
NOTE:
AS-BUILT STORMWATER AND UTILITY INFORMATION SHOWN PROVIDED BY CHRISTIE & CHRISTIE LAND SURVEYING, INC INFORMATION RECEIVED 12/19/2017



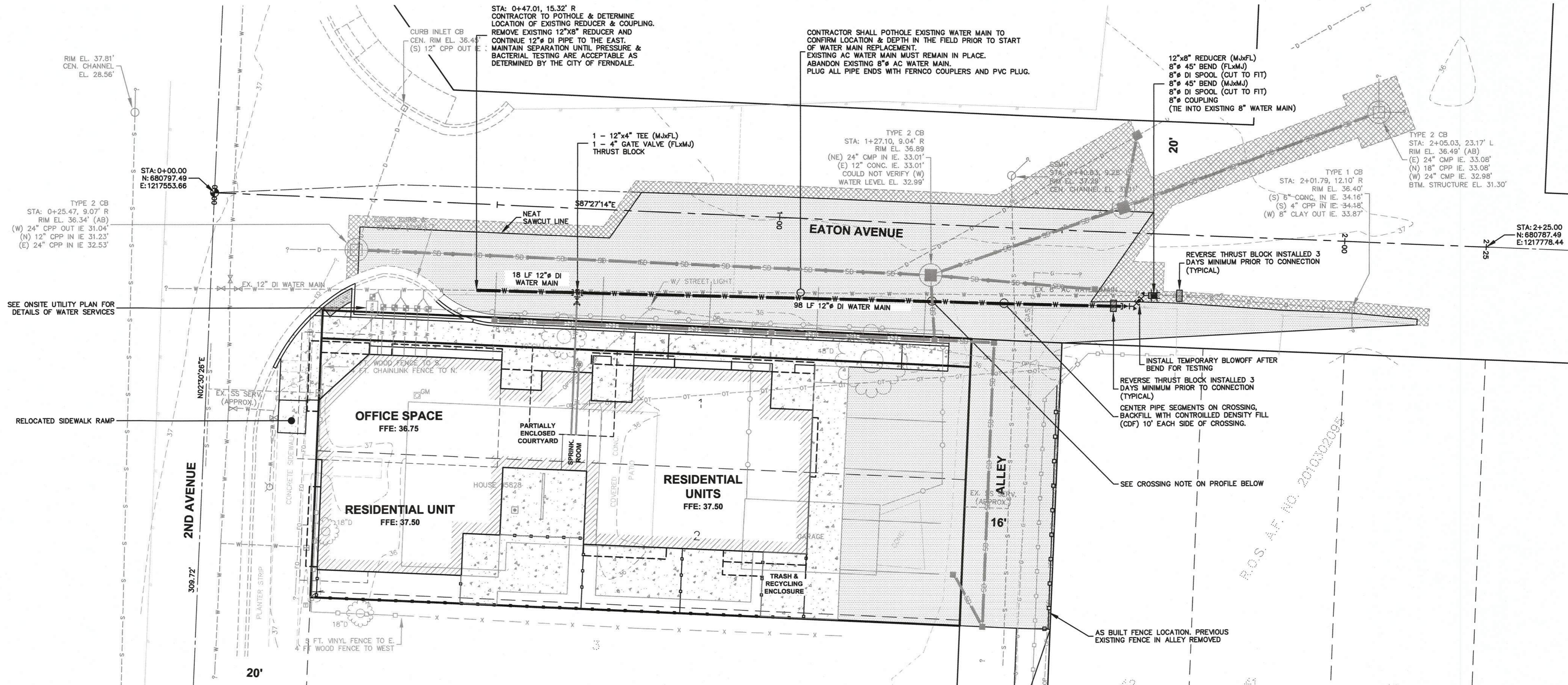
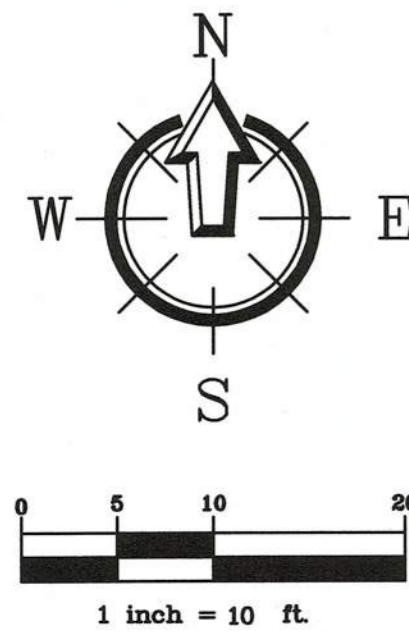
CLIENT: **HAVEN COMMUNITIES, LLC**
2417 MAIN STREET, SUITE 102
FERDALE, WA 98248
CALL BEFORE YOU DIG
FOR BURIED UTILITY LOCATIONS
1-800-424-5555

PROJECT LOCATION: **5828 2ND AVENUE**
5828 2ND AVENUE
FERDALE, WA 98248
DRAWING #: 15240AB1.DWG
DESIGNED BY: JPS
DRAWN BY: EJP
CHECKED BY: MDB

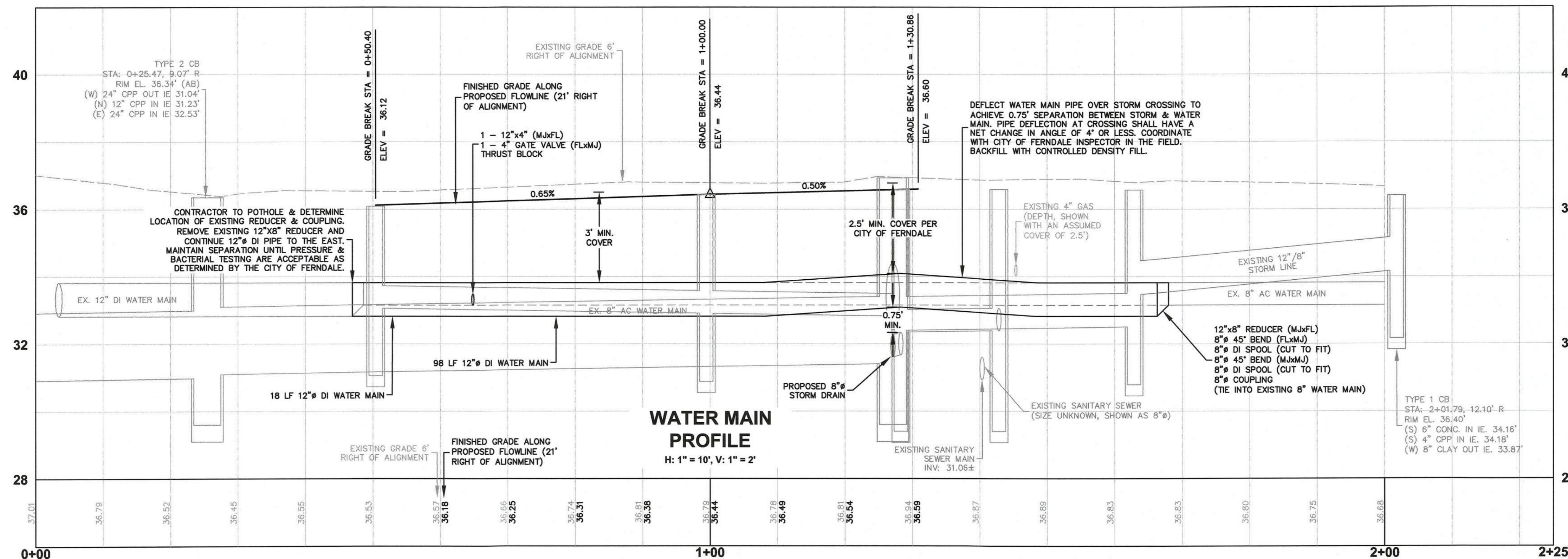
SHEET CONTENTS:
FRONTAGE IMPROVEMENT DRAINAGE & CONVEYANCE PROFILES



JOB #: 15240
SCALE: 1"=10'
VERT: N/A
DATE: 3-8-2018
SHEET: C7



WATER MAIN PLAN
H: 1" = 10'



WATER MAIN PROFILE
H: 1" = 10', V: 1" = 2'

ENGINEER'S CERTIFICATION:
"I HEREBY CERTIFY THAT THE IMPROVEMENTS OF
5828 2ND AVENUE HAVE BEEN INSPECTED BY
FREELAND & ASSOCIATES, INC. AND CONSTRUCTED
IN CONFORMANCE WITH THE PLANS APPROVED BY
PUBLIC WORKS DIRECTOR FOR SAID DEVELOPMENT
AND THE GENERAL SPECIFICATIONS ADOPTED BY
THE CITY OF FERDALE DEPARTMENT OF PUBLIC
WORKS."

BY: *[Signature]* DATE: 3-8-18

AS-BUILT DRAWING

NOTE:
AS-BUILT STORMWATER AND UTILITY INFORMATION
SHOWN PROVIDED BY CHRISTIE & CHRISTIE LAND
SURVEYING, INC INFORMATION RECEIVED 12/19/2017



220 West Champion Street, Suite 200
Bellingham, WA 98225
T: 360.650.1408
F: 360.650.1401

BY:	
DESCRIPTION:	
REV:	
DATE:	
CLIENT:	HAVEN COMMUNITIES, LLC 2417 MAIN STREET, SUITE 102 FERDALE, WA 98248 CALL BEFORE YOU DIG FOR BURIED UTILITY LOCATIONS 1-800-424-5555

PROJECT LOCATION:	5828 2ND AVENUE 5828 2ND AVENUE FERDALE, WA 98248
DRAWING #:	15240A81.DWG
DESIGNED BY:	JPS
DRAWN BY:	EJP
CHECKED BY:	MDB

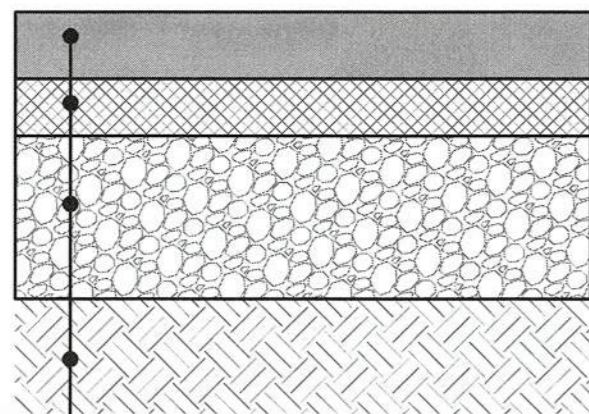
**WATER MAIN EXTENSION
PLAN & PROFILE**



APPROVED
MAR 13 2018

JOB #:	15240	DATE:	3-8-2018
SCALE:	HORIZ: 1"=10'	SHEET:	C8
VERT:	N/A		

- NOTES:
1. ALL DEPTHS REPRESENT COMPACTED DEPTHS.
 2. REMOVE ALL TOPSOIL AND UNSUITABLE NATIVE SOIL FROM THE ROAD AND SLOPE PRISM.
 3. IN FILL SECTIONS EXTEND GRAVEL BALLAST TO UNYIELDING NATIVE SUBGRADE. PLACE GRAVEL BALLAST IN 12" MAX LIFTS AND COMPACT LIFT TO 95% MAX. DENSITY.



3" HOT MIX ASPHALT (HMA),
CLASS $\frac{1}{2}$ ", PG 64-22

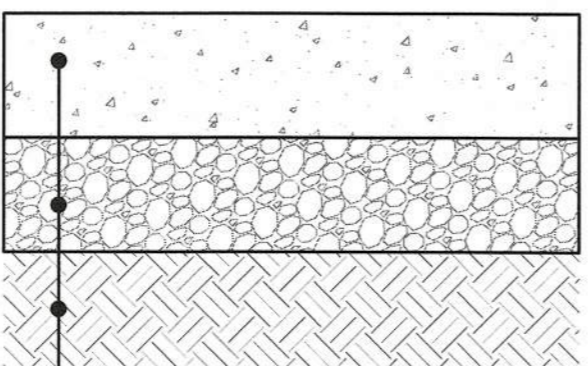
2" CRUSHED SURFACING BASE COURSE

12" GRAVEL BALLAST (MIN. DEPTH)

EXISTING SUBGRADE OR
GRAVEL BALLAST COMPACTED
TO 95% MAX DENSITY

A ASPHALT PAVEMENT SECTION - ALLEY & PARKING

- NOTES:
1. ALL DEPTHS REPRESENT COMPACTED THICKNESSES.
 2. CONTROL JOINTS SHALL BE $\frac{1}{2}$ DEPTH OF THE SLAB.
 3. ALL CONSTRUCTION JOINTS SHALL BE DOWLED.



6" PORTLAND CEMENT CONCRETE WITH
FIBER MESH REINFORCEMENT, 650 PSI
FLEX STRENGTH @ 14 DAYS, 3,500 PSI
COMPRESSIVE STRENGTH @ 28 DAYS,
CONTROL JOINTS (TOOL OR SAWCUT) @
10' O.C.

8" GRAVEL BORROW
COMPACTED TO 95% MAX
DENSITY, MODIFIED PROCTOR

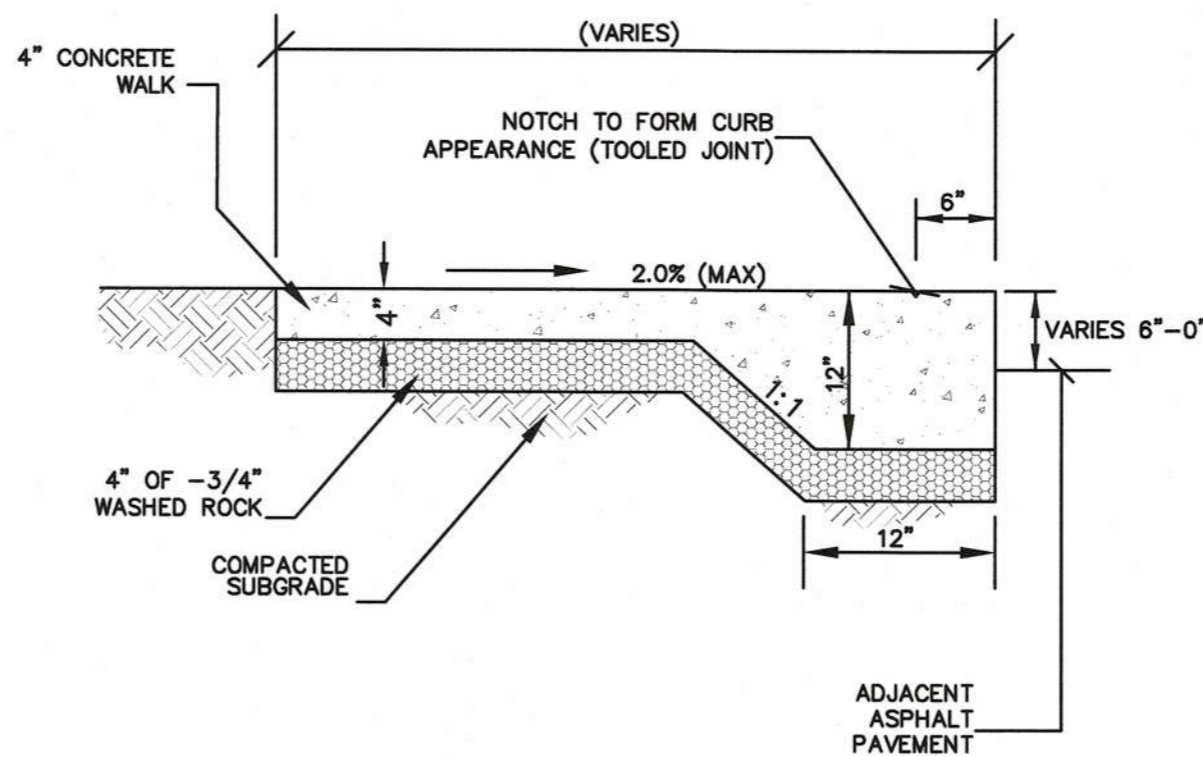
EXISTING SUBGRADE OR
STRUCTURAL FILL COMPACTED
TO 95% MAX DENSITY

B CONCRETE PAVEMENT SECTION

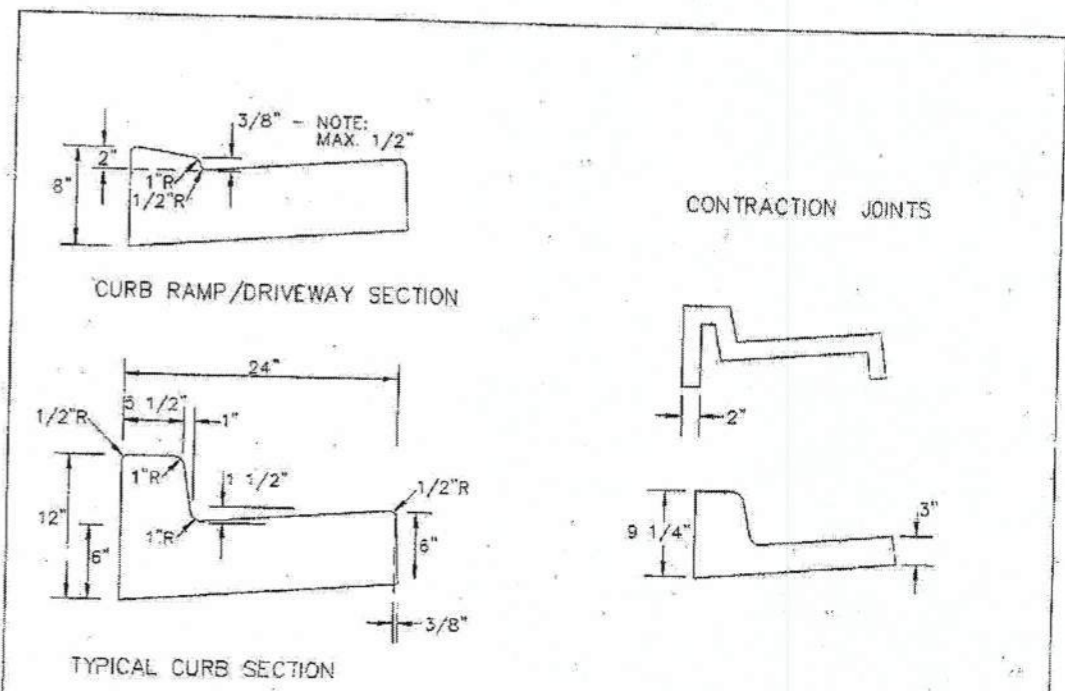
ENGINEER'S CERTIFICATION:
"I HEREBY CERTIFY THAT THE IMPROVEMENTS OF
5828 2ND AVENUE HAVE BEEN INSPECTED BY
FREELAND & ASSOCIATES, INC. AND CONSTRUCTED
IN CONFORMANCE WITH THE PLANS APPROVED BY
PUBLIC WORKS DIRECTOR FOR SAID DEVELOPMENT
AND THE GENERAL SPECIFICATIONS ADOPTED BY
THE CITY OF FERNDAL DEPARTMENT OF PUBLIC
WORKS."

BY: *[Signature]* DATE: 3-8-18

- NOTES:
1. EDGE DOES NOT NEED TO BE THICKENED IN AREAS WHERE ADJACENT TO PLANTING/LANDSCAPE AREAS OR BUILDING FOUNDATION.
 2. TOOLED JOINTS SPACED TO MATCH SIDEWALK WIDTH - EXPANSION JOINTS SPACED 100' MAX. & WHERE WALK JOINS DRIVEWAY OR CURB.
 3. NOTCH TO FORM CURB APPEARANCE IS NOT REQUIRED WHEN SIDEWALK IS ADJACENT TO LANDSCAPING.



C THICKENED EDGE SIDEWALK



GENERAL NOTES:

CONTRACTION JOINTS OF ONE OF THE TYPES SHOWN ABOVE TO BE PLACED 10' C/C. JOINTS MUST COMPLETELY SEVER THE STRUCTURE TO THE POINTS SHOWN. JOINTS MAY BE MADE BY INSERTING MINIMUM 3/16" BITUMINOUS FILLER DUMMY JOINTS. JOINTS SHALL BE CLEANED AND EDGED.

2" WEEP HOLES TO BE PLACED ON EACH SIDE OF DRIVEWAY SECTION AND A MAXIMUM 60' C/C IN OUT SECTIONS WHERE SIDEWALK GRAIN NOT REQUIRED BY CITY PUBLIC WORKS DIRECTOR.

3/4" EXPANSION JOINTS TO BE PLACED AT DRIVEWAY SECTIONS, CURB RETURNS, CURB RAMP AND COLD JOINTS OF A MAXIMUM OF 80' C/C. EXPANSION JOINTS SHALL PROTRUDE 1" BELOW THE BOTTOM OF OUTER CONCRETE. SHALL BE CEMENT CONCRETE CLASS 3000.

FINISHED WORK SHALL NOT VARY MORE THAN 1/8" IN GRADE AND 1/4" IN ALIGNMENT WHEN CHECKED WITH 10' STRAIGHT EDGE.

EXPOSED SURFACES SHALL BE BRUSHED WITH A FIBER BRUSH.

WHITE PIGMENTED OR TRANSPARENT CURING COMPOUND SHALL BE APPLIED AS OUTLINED IN THE STANDARD SPECIFICATIONS.

FURTHER REQUIREMENTS SHALL BE AS SPECIFIED IN THE STANDARD SPECIFICATIONS.

APPROVED *[Signature]* DATE: *[Date]*

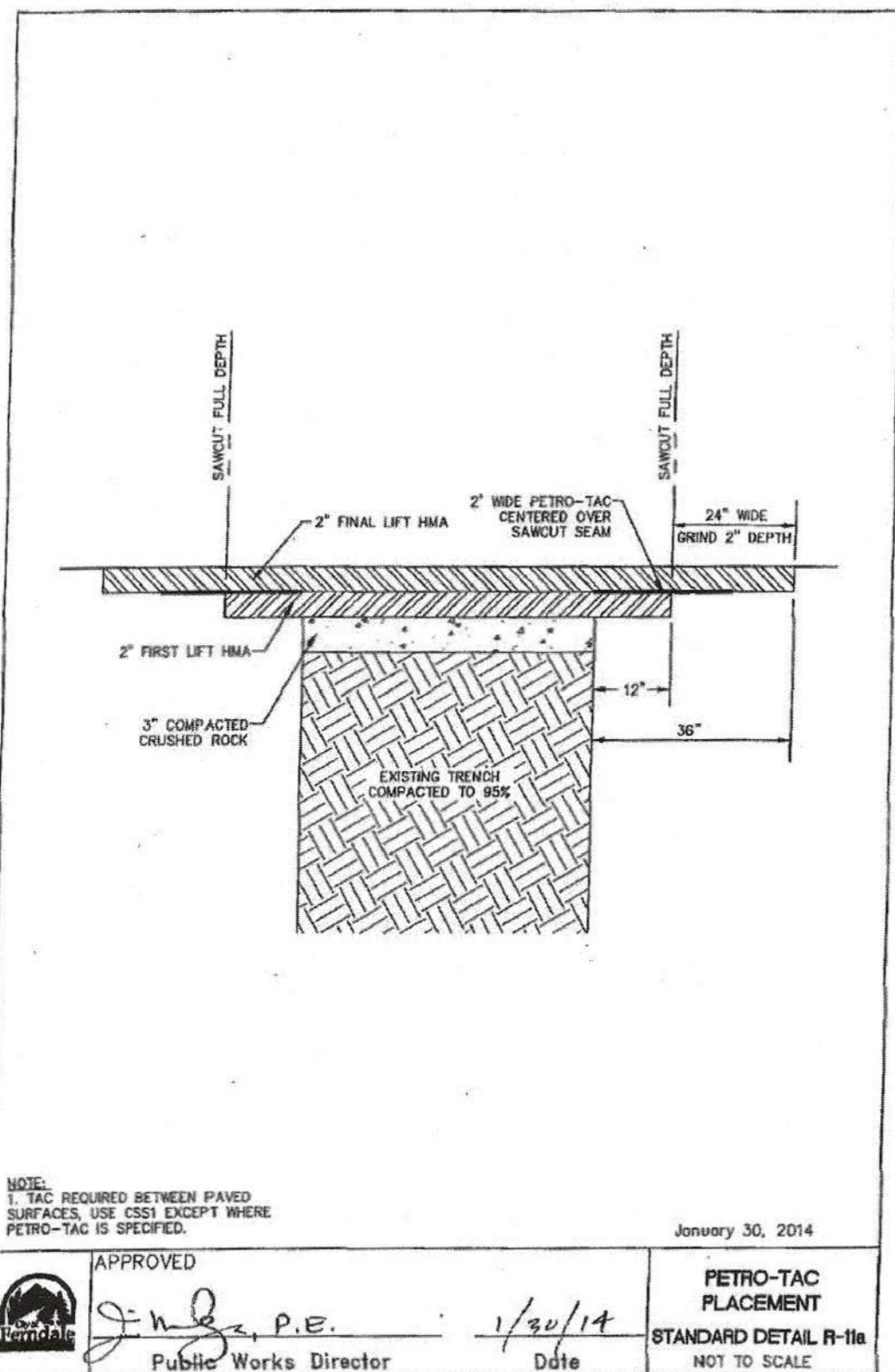
CITY OF FERNDAL
CURB AND GUTTER

DRAWING
R-9

JUNE 1995

2019RD2A/R-9

D CURB AND GUTTER



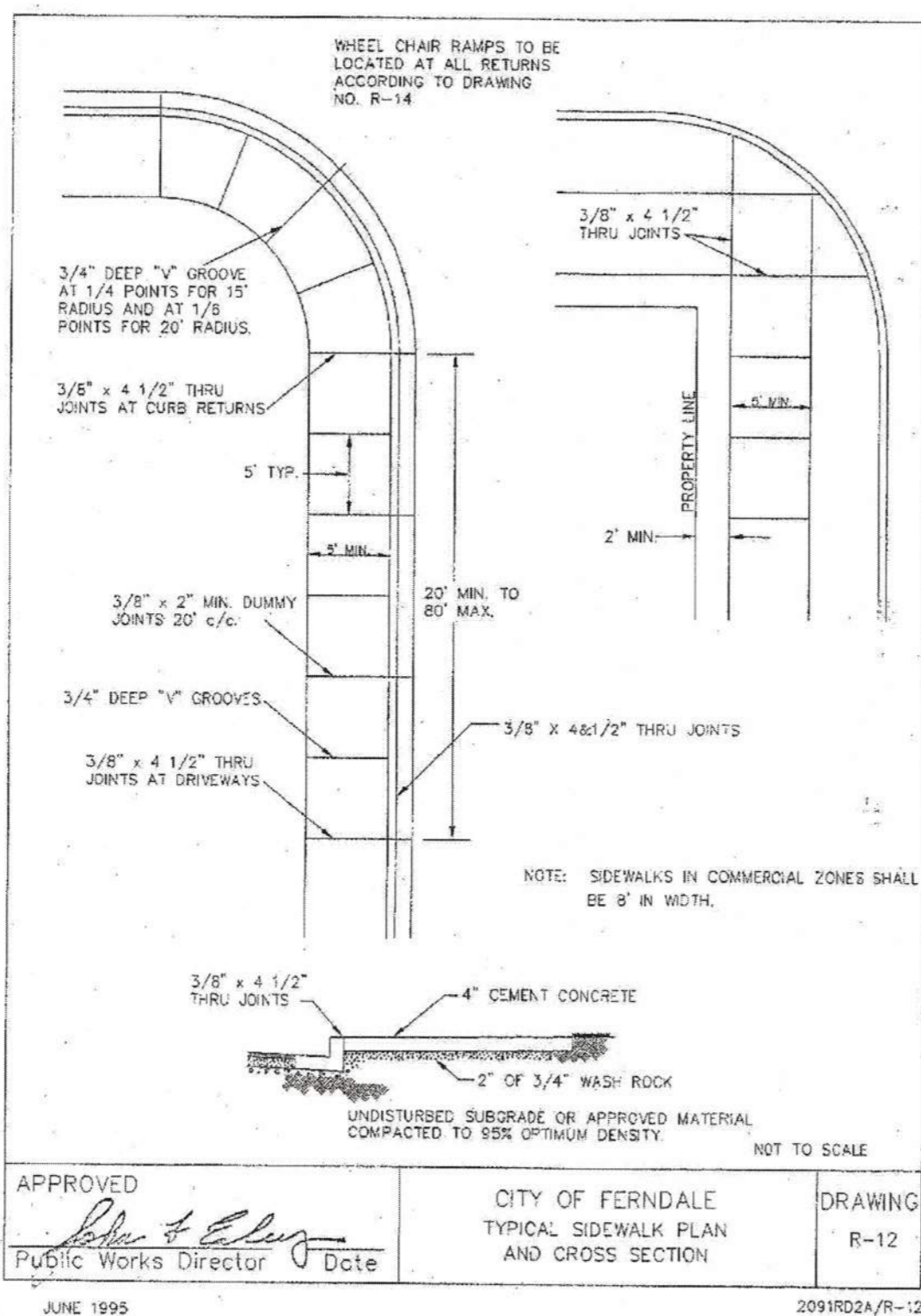
NOTE:
1. TAC REQUIRED BETWEEN PAVED SURFACES. USE CSSI EXCEPT WHERE PETRO-TAC IS SPECIFIED.

APPROVED *[Signature]* DATE: 1/30/14

PETRO-TAC
PLACEMENT
STANDARD DETAIL R-11a

NOT TO SCALE

E PETRO-TAC PLACEMENT



APPROVED *[Signature]* DATE: *[Date]*

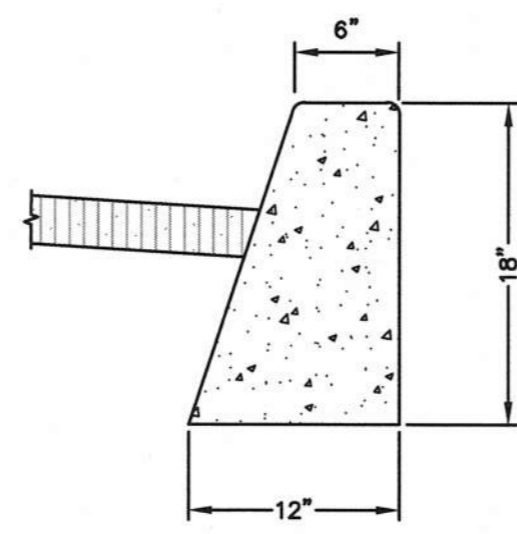
CITY OF FERNDAL
TYPICAL SIDEWALK PLAN
AND CROSS SECTION

DRAWING
R-12

JUNE 1995

2019RD2A/R-12

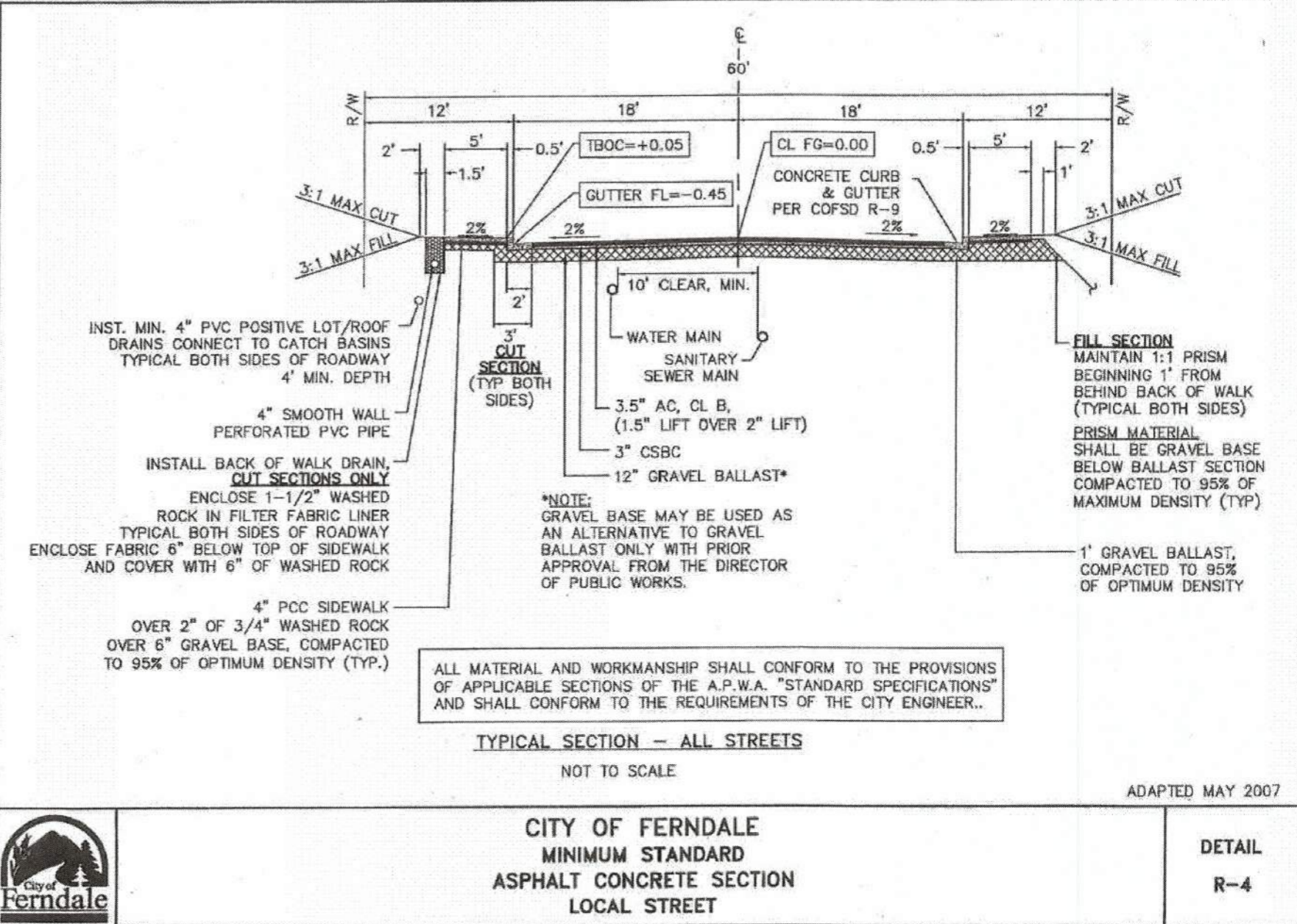
F SIDEWALK DETAILS



TYPE "E" BARRIER CURB

- DUMMY JOINTS SHALL EXTEND 2" BELOW GUTTER LINE, BE MINIMUM OF $\frac{3}{8}$ " THICK AND BE 10' C/C OR AS DIRECTED BY THE CITY ENGINEER. PARTIAL DIVISION PLATES MAY BE USED IN LIEU OF DUMMY JOINTS IF APPROVED BY THE CITY ENGINEER.
- 2" WEEP HOLES EVERY 60' AND EACH SIDE OF DRIVEWAYS.
- CONCRETE SHALL BE CLASS "C". (3000 PSI)

G BARRIER CURB



APPROVED *[Signature]* DATE: 3-8-2018

CITY OF FERNDAL
MINIMUM STANDARD
ASPHALT CONCRETE SECTION
LOCAL STREET

DETAIL
R-4

H COF MINIMUM STREET SECTION



220 West Champion Street, Suite 200 E 360.650.1408
Bellingham, WA 98225 F 360.650.1401

CLIENT: HAVEN COMMUNITIES, LLC
2417 MAIN STREET, SUITE 102
FERNDAL, WA 98248

CALL BEFORE YOU DIG
FOR BURIED UTILITY LOCATIONS
1-800-424-5656

PROJECT LOCATION: 5828 2ND AVENUE
5828 2ND AVENUE
FERNDAL, WA 98248

DRAWING #: 15240A81.DWG
DESIGNED BY: JPS
DRAWN BY: EJP
CHECKED BY: MOB

PAVING DETAILS

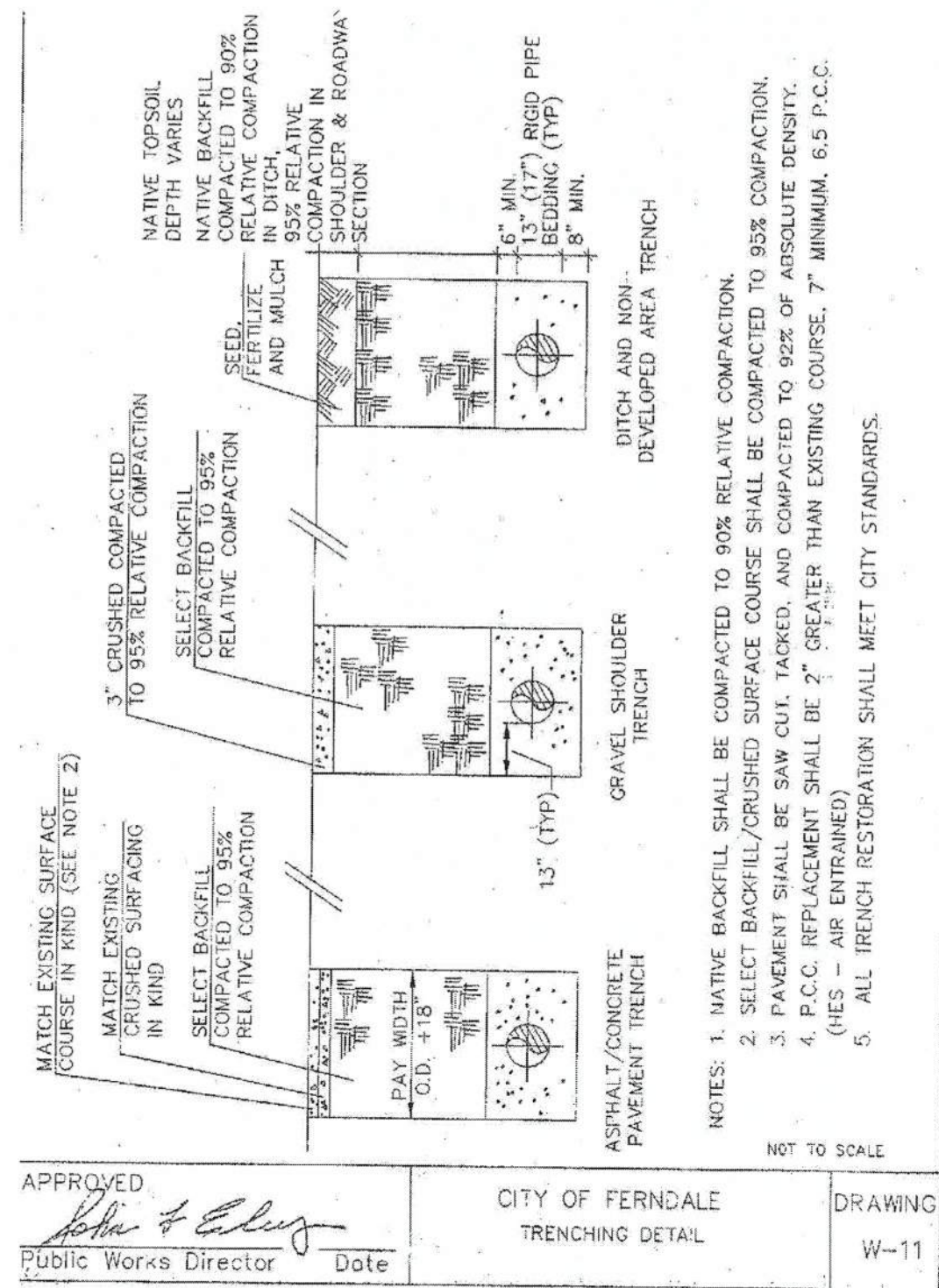
SHEET CONTENTS:

APPROVED
MAR 12 2018
BY: CITY OF FERNDAL
PUBLIC WORKS DEPARTMENT

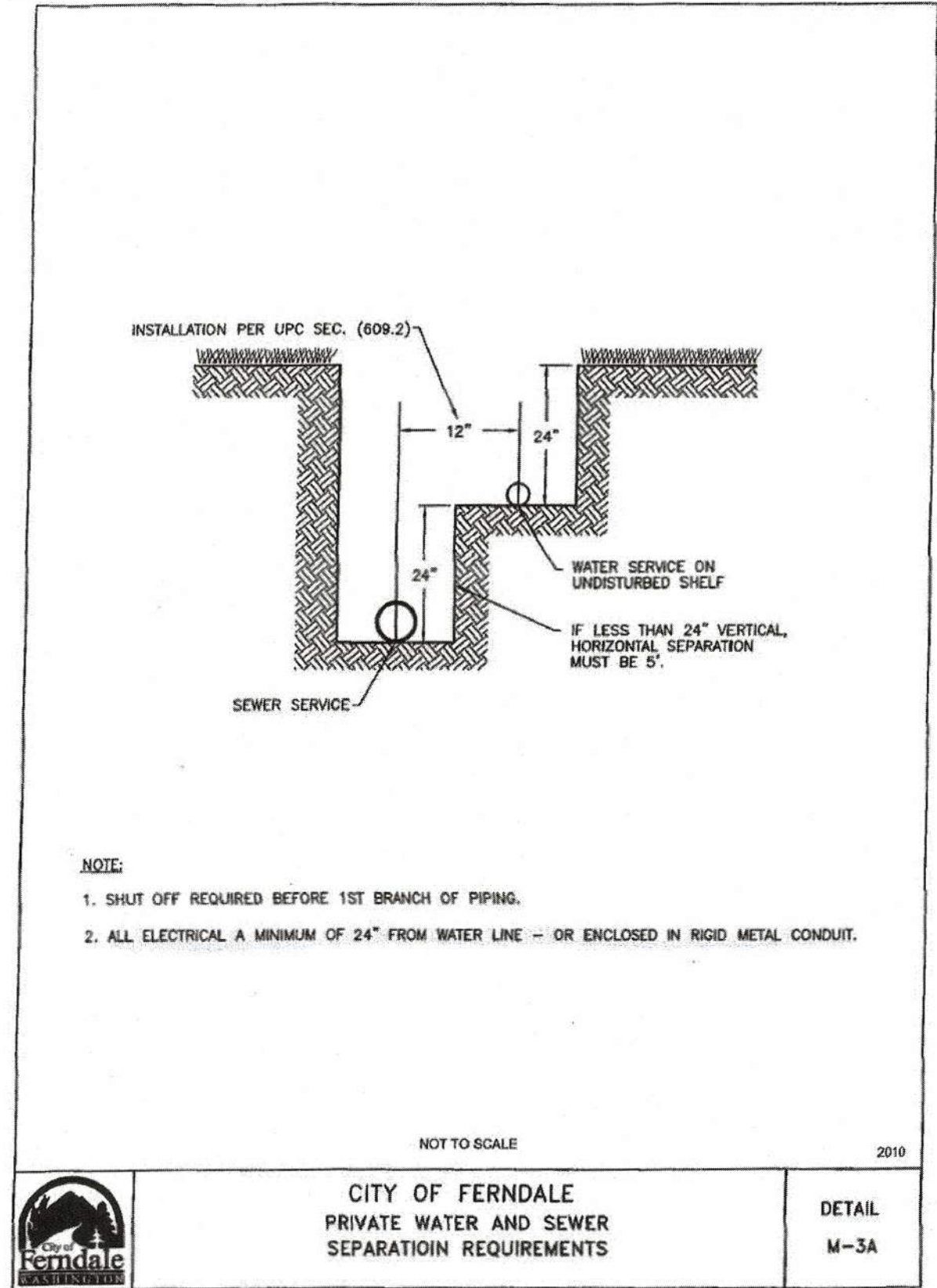
JOB #: C9
SCALE: HORIZ: N/A
VERT: N/A

DATE: 3-8-2018
SHEET: C9

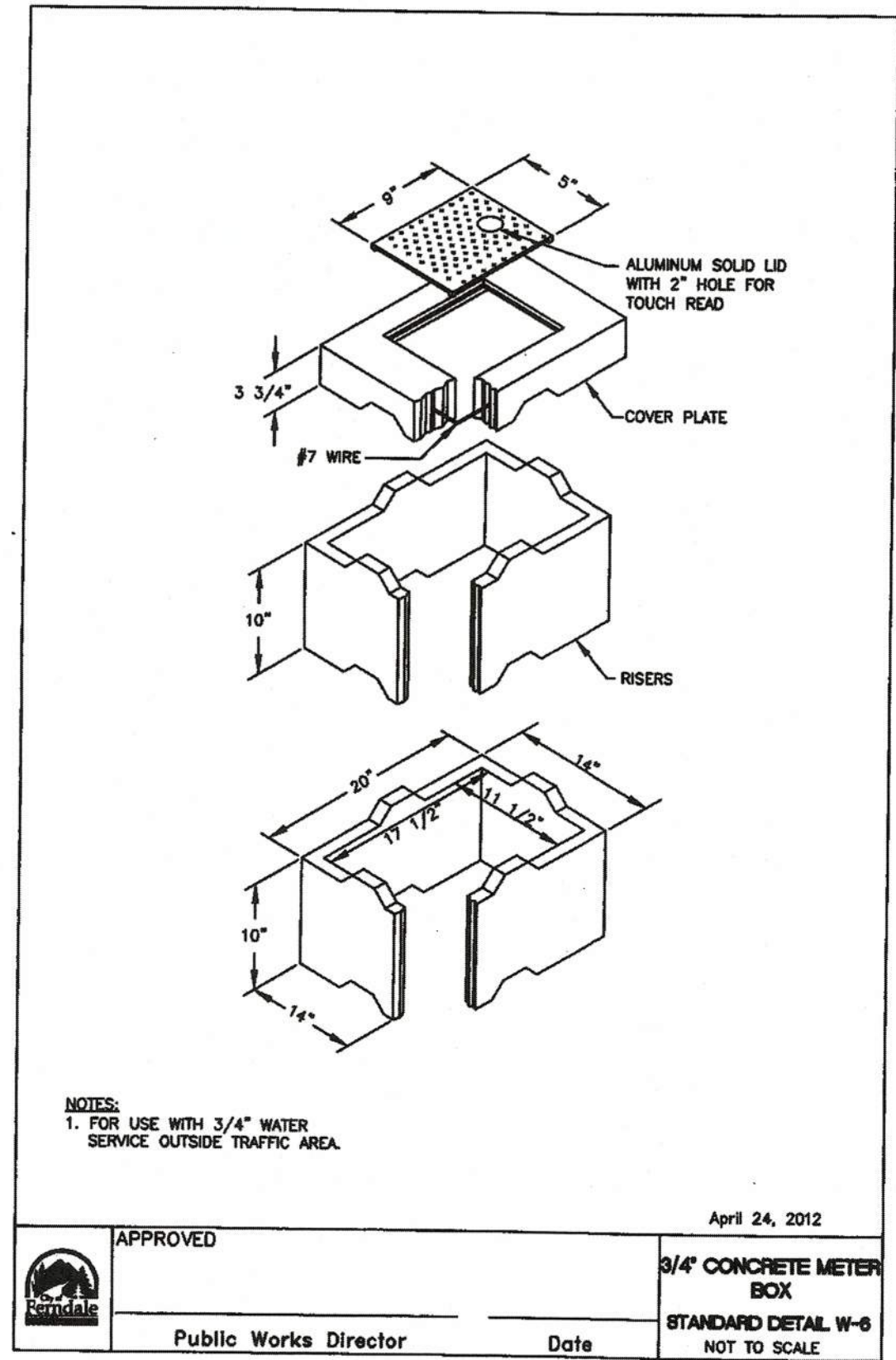




A TRENCHING DETAIL
nts

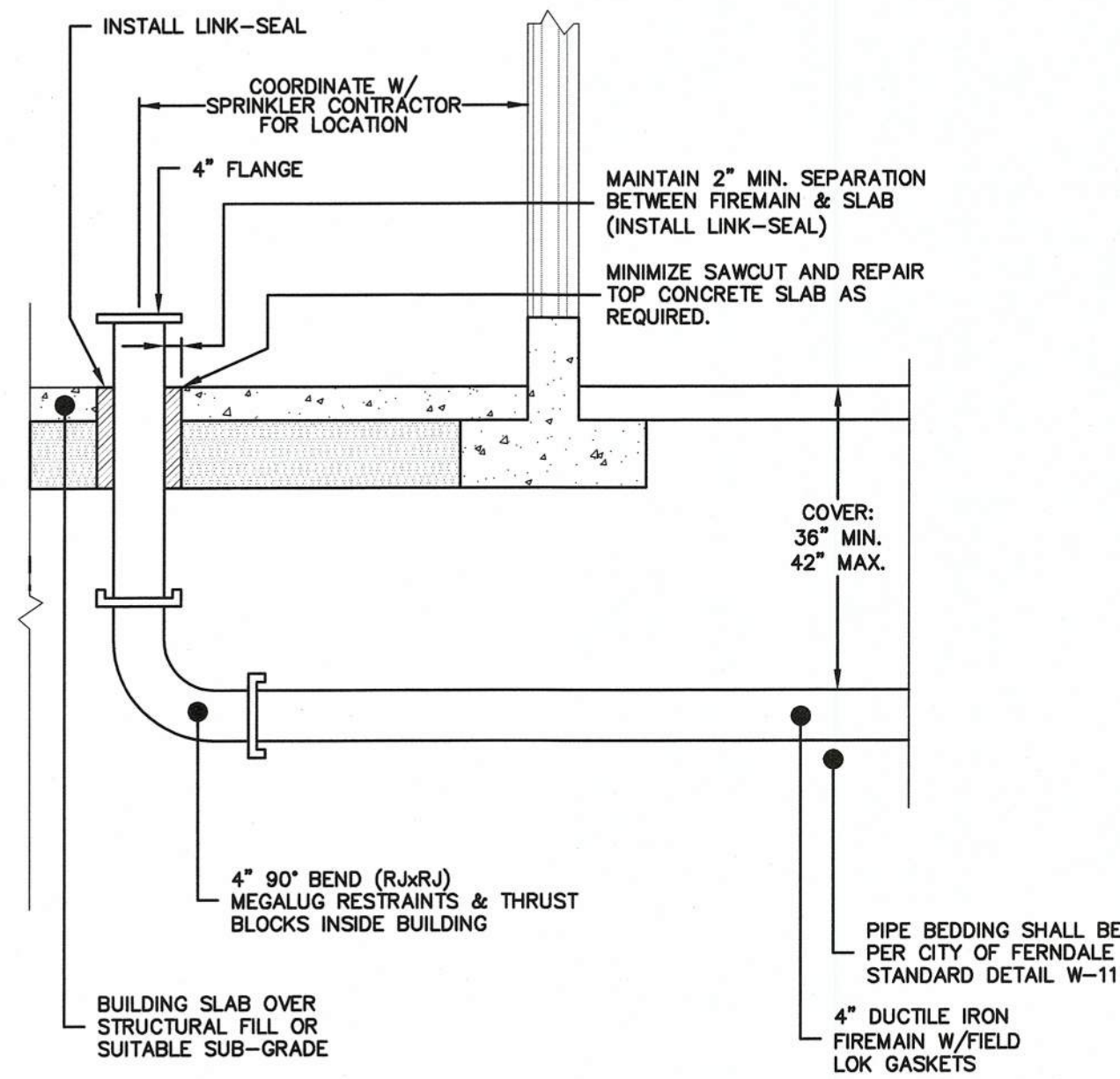


B PRIVATE WATER SEPARATION REQUIREMENTS
nts



C TYPICAL 3/4\"/>

- NOTES:**
1. ALL WORK SHALL CONFORM TO NFPA 24 AND THE INTERNATIONAL FIRE CODE.
 2. BACKFLOW PREVENTOR AND FDC CHECK VALVE SHALL BE LOCATED IN THE BUILDING.
 3. THE FIRE DEPARTMENT HOSE CONNECTION FOR SUPPLY SHALL BE OUTFITTED WITH A FIVE (5) INCH STORZ UNIVERSAL QUICK-CONNECT COUPLING AND BLIND CAP.
 4. INSTALLER MUST BE A LEVEL "U" CERTIFICATE HOLDER.
 5. IN THE UNCOVERED DITCH, THE COMPLETED UNDERGROUND FIRE LINE SHALL BE HYDROSTATICALLY TESTED TO 200 PSI FOR 2 HOURS, AND COMPLETELY FLUSHED IN THE PRESENCE OF A FIRE DEPARTMENT INSPECTOR.
 6. A TAMPER SECURITY SWITCH SHALL BE INSTALLED ON THE POST INDICATOR VALVE.
 7. CONTACT ENGINEER OF RECORD IF FIELD CONDITIONS DO NOT MATCH CONDITIONS SHOWN ON THE DETAIL.
 8. FIRE LINE OUTSIDE OF RIGHT-OF-WAY REQUIRES OWNER TO RECORD HOLD HARMLESS AGREEMENT. APPLICANT SHALL HOLD THE CITY OF FERNDALE HARMLESS FROM ANY AND ALL CLAIMS ASSOCIATED WITH THE MAINTENANCE, FAILURE, DAMAGE, AND REPAIR OF SAID UTILITIES.



D FIRE CONNECT INSIDE BUILDING DETAIL
nts

BEDDING SPECIFICATIONS FOR PVC PIPE – ASPHALT SURFACE

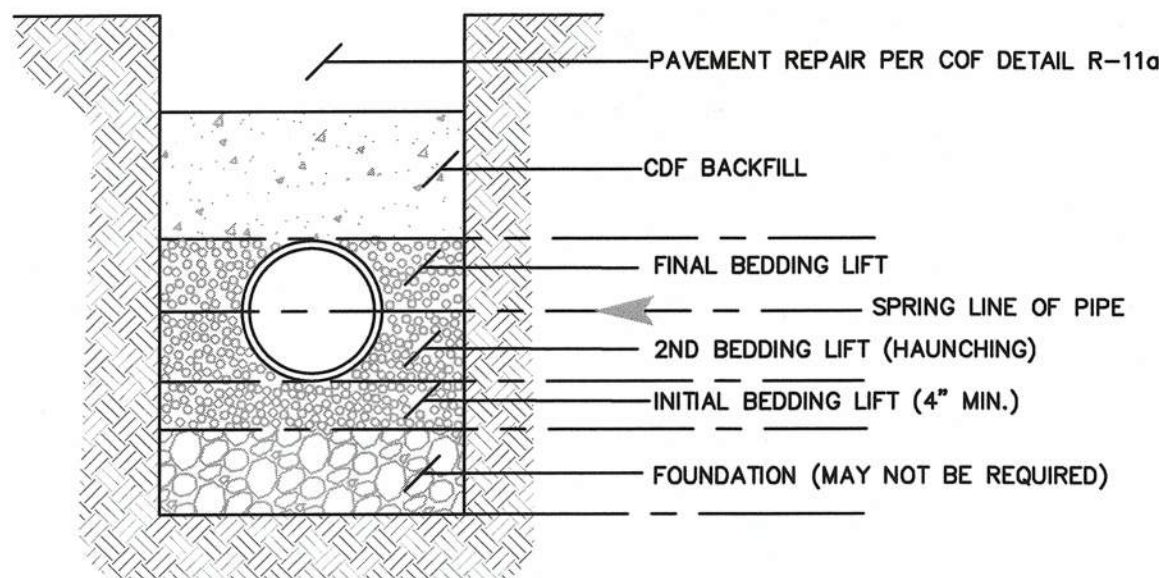
THE FOLLOWING SUPPLEMENTAL SPECIFICATIONS ARE TO BE USED IN CONJUNCTION WITH THE STANDARD SPECIFICATIONS FOR ROAD, BRIDGE AND MUNICIPAL CONSTRUCTION, CURRENT EDITION:

BEDDING FOR SEWERS, DRAINS AND CULVERTS FOR THERMOPLASTIC PIPE—

BEDDING MATERIAL FOR THERMOPLASTIC PIPE SHALL BE PEA GRAVEL CONFORMING TO THE FOLLOWING SPECIFICATIONS:

PEA GRAVEL — PEA GRAVEL BEDDING SHALL BE A CLEAN MIXTURE FREE FROM ORGANIC MATTER AND CONFORMING TO THE FOLLOWING GRADATION WHEN TESTED IN ACCORDANCE WITH ASTM D422:

U.S. STANDARD SIEVE SIZE	PERCENT PASSING, BY WT.
3/4"	100
3/8"	95-100
#8	0-10
#200	0-3



E PVC PIPE BEDDING SPECIFICATIONS
2' OR LESS OF COVER

ENGINEER'S CERTIFICATION:
"I HEREBY CERTIFY THAT THE IMPROVEMENTS OF 5828 2ND AVENUE HAVE BEEN INSPECTED BY FREELAND & ASSOCIATES, INC. AND CONSTRUCTED IN CONFORMANCE WITH THE PLANS APPROVED BY PUBLIC WORKS DIRECTOR FOR SAID DEVELOPMENT AND THE GENERAL SPECIFICATIONS ADOPTED BY THE CITY OF FERNDALE DEPARTMENT OF PUBLIC WORKS."

BY: *[Signature]* DATE: 2-8-18

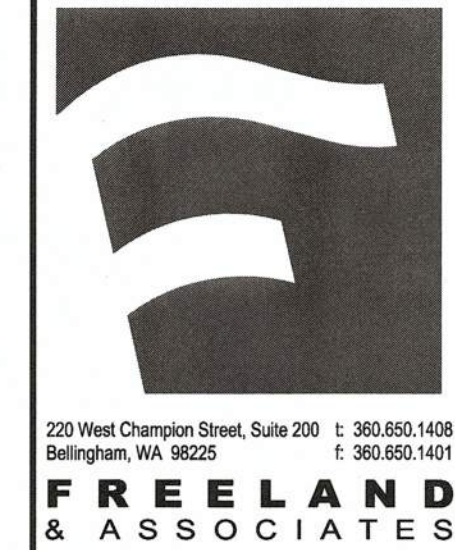
APPROVED

MAR 13 2018

BY: *[Signature]*
CITY OF FERNDALE
PUBLIC WORKS DEPARTMENT

AS-BUILT DRAWING

NOTE:
AS-BUILT STORMWATER AND UTILITY INFORMATION SHOWN PROVIDED BY CHRISTIE & CHRISTIE LAND SURVEYING, INC INFORMATION RECEIVED 12/19/2017



BY:	
DESCRIPTION:	
REV:	
DATE:	
CLIENT:	HAVEN COMMUNITIES, LLC 2417 MAIN STREET, SUITE 102 FERNDALE, WA 98248
CALL BEFORE YOU DIG FOR BURIED UTILITY LOCATIONS 1-800-424-5555	

PROJECT LOCATION:	5828 2ND AVENUE 5828 2ND AVENUE FERNDALE, WA 98248
DRAWING #:	15240AB1.DWG
DESIGNED BY:	JPS
DRAWN BY:	EJP
CHECKED BY:	MDB

SHEET CONTENTS:	WATER DETAILS
JOB #:	15240
DATE:	3-8-2018
SCALE:	HORIZ: N/A
VERT:	N/A
SHEET:	C11



THE FOLLOWING SUPPLEMENTAL SPECIFICATIONS ARE TO BE USED IN CONJUNCTION WITH THE STANDARD SPECIFICATIONS FOR ROAD, BRIDGE AND MUNICIPAL CONSTRUCTION, CURRENT EDITION:

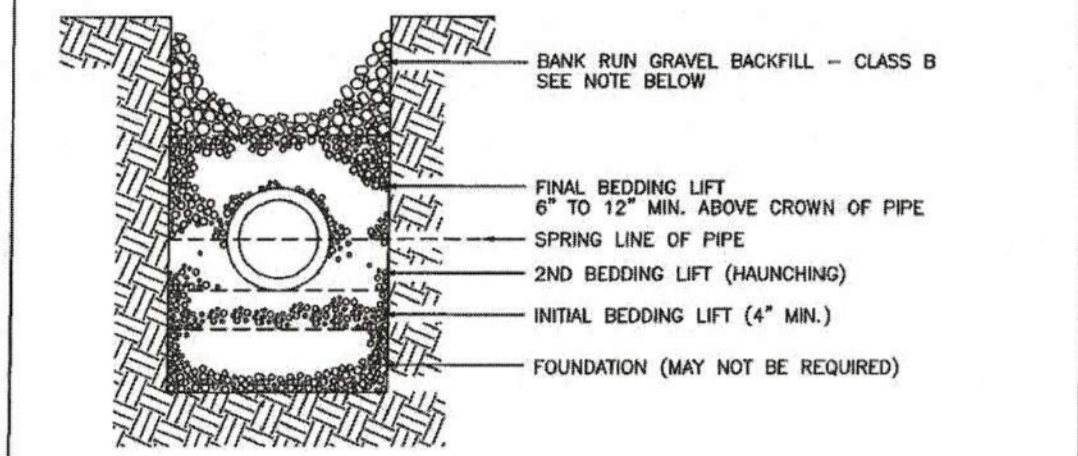
BEDDING FOR SEWERS, DRAINS AND CULVERTS FOR PVC PIPE--

BEDDING MATERIAL FOR PVC PIPE SHALL BE PEA GRAVEL CONFORMING THE FOLLOWING SPECIFICATIONS:

PEA GRAVEL - PEA GRAVEL BEDDING SHALL BE A CLEAN MIXTURE FREE FROM ORGANIC MATTER AND CONFORMING TO THE FOLLOWING GRADATION WHEN TESTED IN ACCORDANCE WITH ASTM D422:

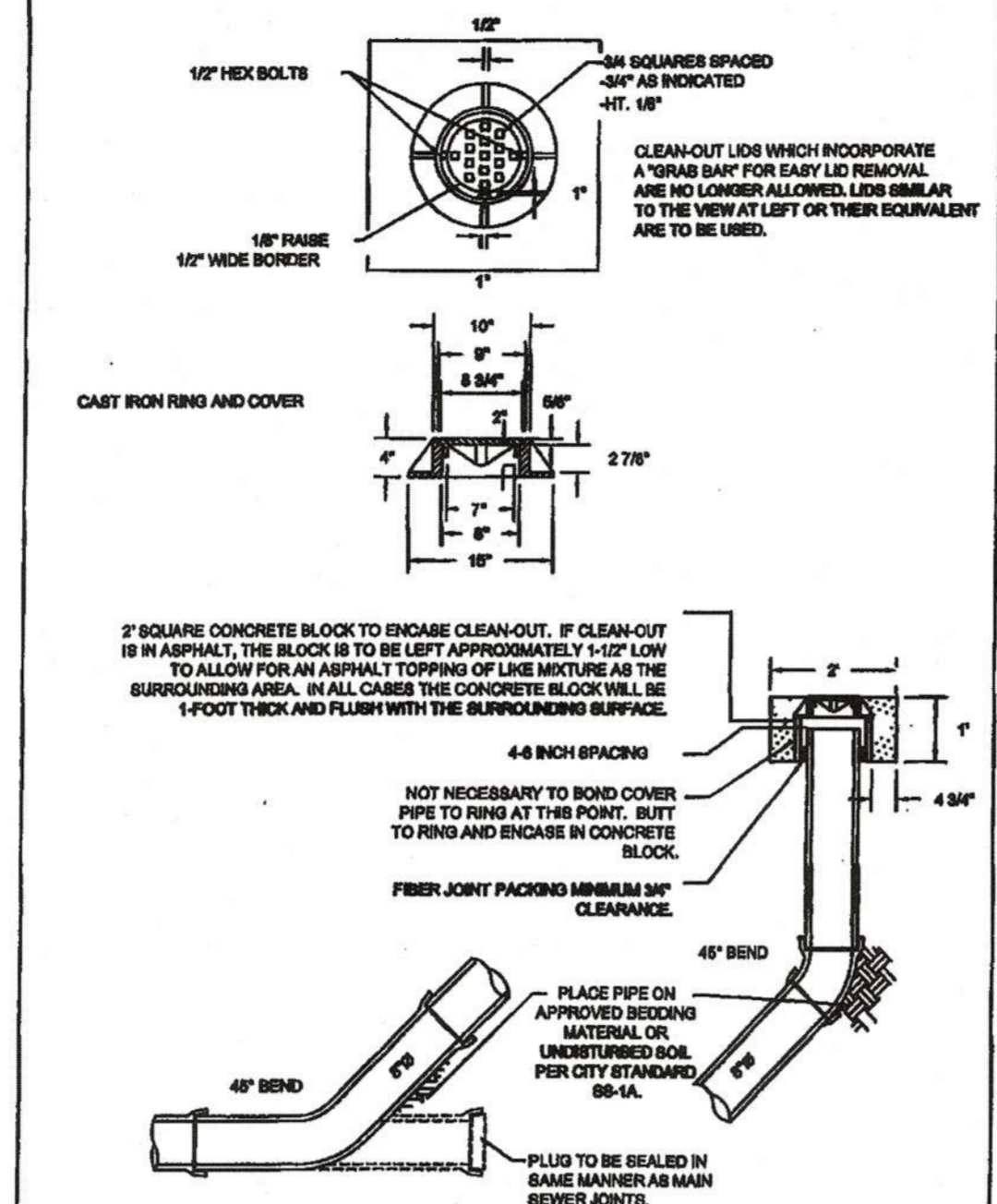
U.S. STANDARD SIEVE SIZE	PERCENTAGE PASSING, BY WT.
3/4"	100
3/8"	95-100
#8	0-10
#200	0-3

BACKFILL - WHENEVER A TRENCH IS EXCAVATED IN THE EXISTING OR PROPOSED ROADWAY, SIDEWALK OR OTHER AREAS WHERE SETTLEMENT WOULD BE DETRIMENTAL, THE ENTIRE TRENCH SHALL BE BACKFILLED WITH IMPORTED GRAVEL AND COMPACTED TO 95% OF MAXIMUM DENSITY.



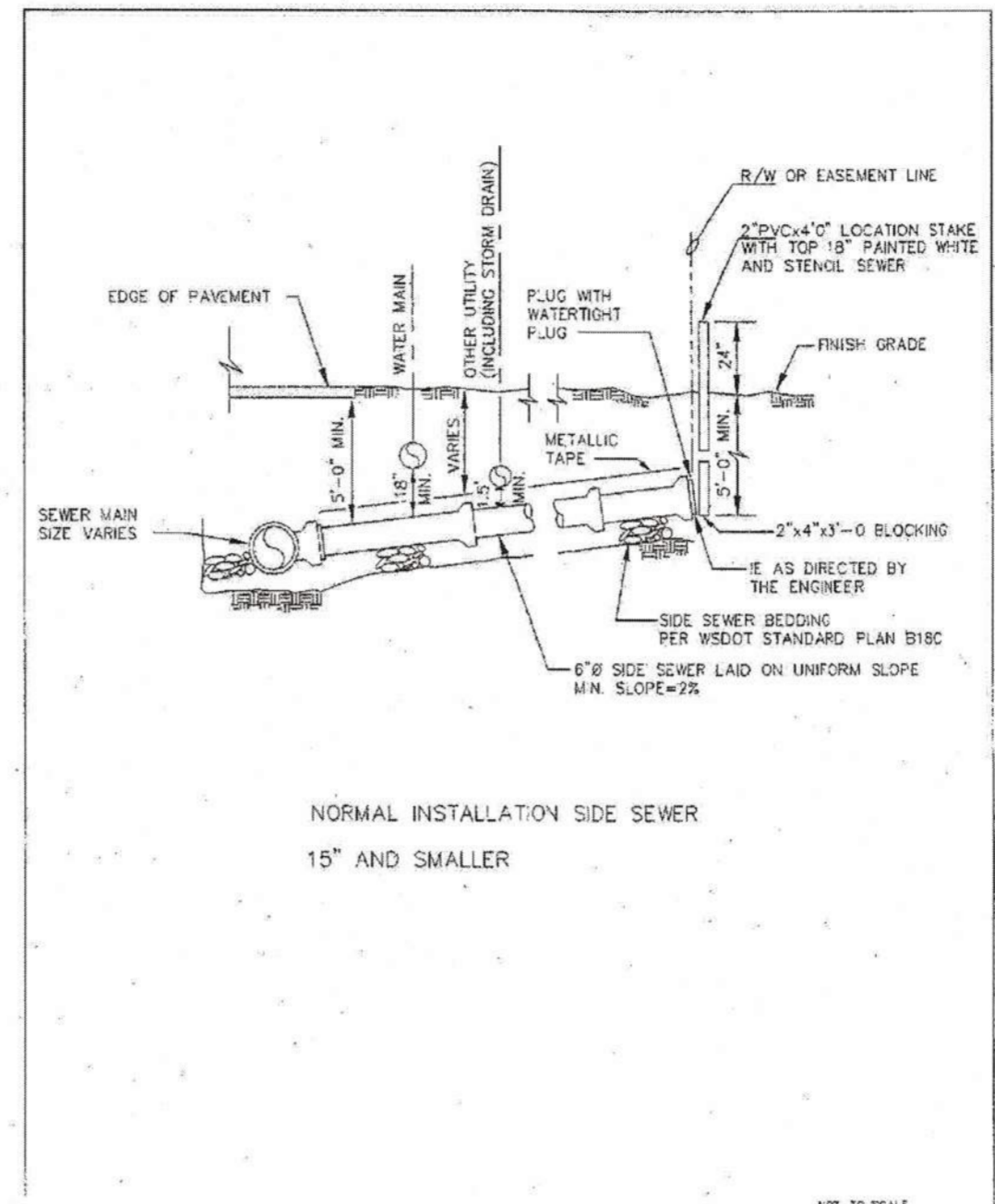
APPROVED	MARCH 13, 2012
	BEDDING SPECIFICATIONS FOR PVC PIPE
Public Works Director	STANDARD DETAIL SS-1
Date	

A PIPE BEDDING FOR SANITARY SEWERS



APPROVED	MARCH 13, 2012
	6" CLEAN OUT
Public Works Director	STANDARD DETAIL SS-6
Date	

B SANITARY SEWER CLEAN OUT



APPROVED	CITY OF FERNDAL	DRAWING
	NORMAL INSTALLATION	SS-6
Public Works Director	15" AND SMALLER SEWER MAINS	
Date		

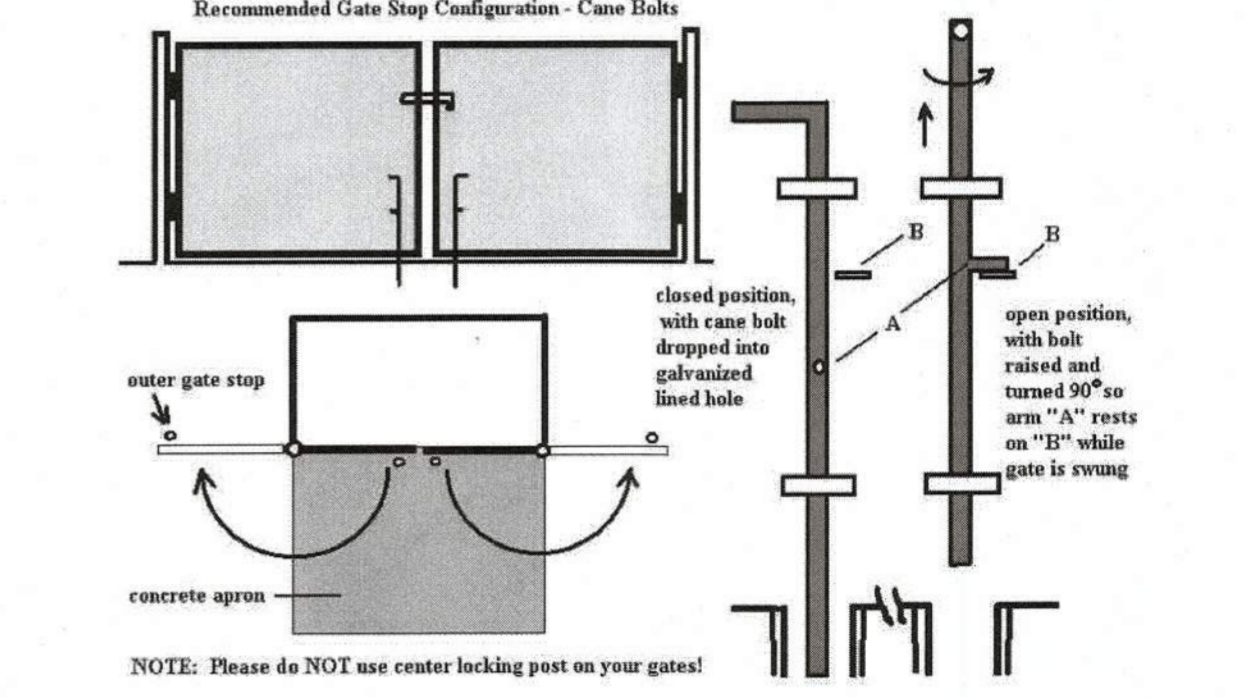
C SANITARY SEWER SIDE SERVICE

Gates

We prefer no gates. If gates will be used, numerous site specific questions must be addressed in consultation with SSC. Please contact Recycling Manager, Rodd Pemble at rodd@ssc-inc.com or (360) 734-3490 with questions.

Gate opening must be 11-12 feet clear for direct truck access to one (1) container and 18 feet for two (2) containers, otherwise roll-out charges will apply (see Pack Out Service below). Gates should open 180 degrees from closed position if truck drives in and there is less than 24" clear on both sides of container. If 24" clear, gates may open to 90 degrees from closed. A 40" access gate for Toters® and customers reduces wear on large gates. If gates are opened and closed by driver, charges apply for driver time (see Gate Service below).

Gate stops are 30" long, 3/4" O.D. steel bar, sliding in two sleeves (1.25" I.D.) welded to gate frame. Please weld on anti-theft spur between sleeves, rest shelf on frame so bolt can be raised and turned 1/4 turn to rest while gate is moved. Stops should drop into lined 1.5" O.D. hole drilled through slab into permeable layer for drainage. Please do NOT use center drop gate posts with integral "U" hasp - they get bent and hurt folks!



Gate Service (Option)—Available for a small charge. If locked, customer must unlock or supply a standard SSC dumpster lock. Purchase lock from Accurate Lock & Security, Inc. or Security Solutions (formerly Bellingham Lock & Safe).

Pack Out Service (Option)—Available for customers whose containers must be moved more than 5 feet to reach collection truck. SSC driver takes container to truck, empties it and returns it to designated storage location. Small charge per pick-up on containers 4-yd and smaller (note: there are no wheels on 6-yd and up). Due to weight, most restaurants cannot have Pack Out Service over 2-yd. Contact us for rates or more info.

ssc@ssc-inc.com
360.734.3490
24 Hour Dispatch 360.734.2051

D GARBAGE ENCLOSURE GATE STOP

ENGINEER'S CERTIFICATION:

"I HEREBY CERTIFY THAT THE IMPROVEMENTS OF 5828 2ND AVENUE HAVE BEEN INSPECTED BY FREELAND & ASSOCIATES, INC. AND CONSTRUCTED IN CONFORMANCE WITH THE PLANS APPROVED BY PUBLIC WORKS DIRECTOR FOR SAID DEVELOPMENT AND THE GENERAL SPECIFICATIONS ADOPTED BY THE CITY OF FERNDAL DEPARTMENT OF PUBLIC WORKS."

BY: DATE: 3-8-18

AS-BUILT DRAWING

NOTE: AS-BUILT STORMWATER AND UTILITY INFORMATION SHOWN PROVIDED BY CHRISTIE & CHRISTIE LAND SURVEYING, INC INFORMATION RECEIVED 12/19/2017

APPROVED

MAR 12 2018

BY:

CITY OF FERNDAL

PUBLIC WORKS DEPARTMENT

	220 West Champion Street, Suite 200 Bellingham, WA 98225 T: 360.650.1408 F: 360.650.1401	
	FREELAND & ASSOCIATES	
CLIENT:	HAVEN COMMUNITIES, LLC 2417 MAIN STREET, SUITE 102 FERNDAL, WA 98248 CALL BEFORE YOU DIG FOR BURIED UTILITY LOCATIONS 1-800-424-5555	
PROJECT LOCATION:	5828 2ND AVENUE 5828 2ND AVENUE FERNDAL, WA 98248	
DRAWING #:	15240AB1.DWG	DRAWN BY: EJP
DESIGNED BY:	JPS	CHECKED BY: MDB
SHEET CONTENTS:	SEWER DETAILS	
JOB #:	15240	DATE: 3-8-2018
SCALE:	N/A	SHEET: C12
VERT:	N/A	