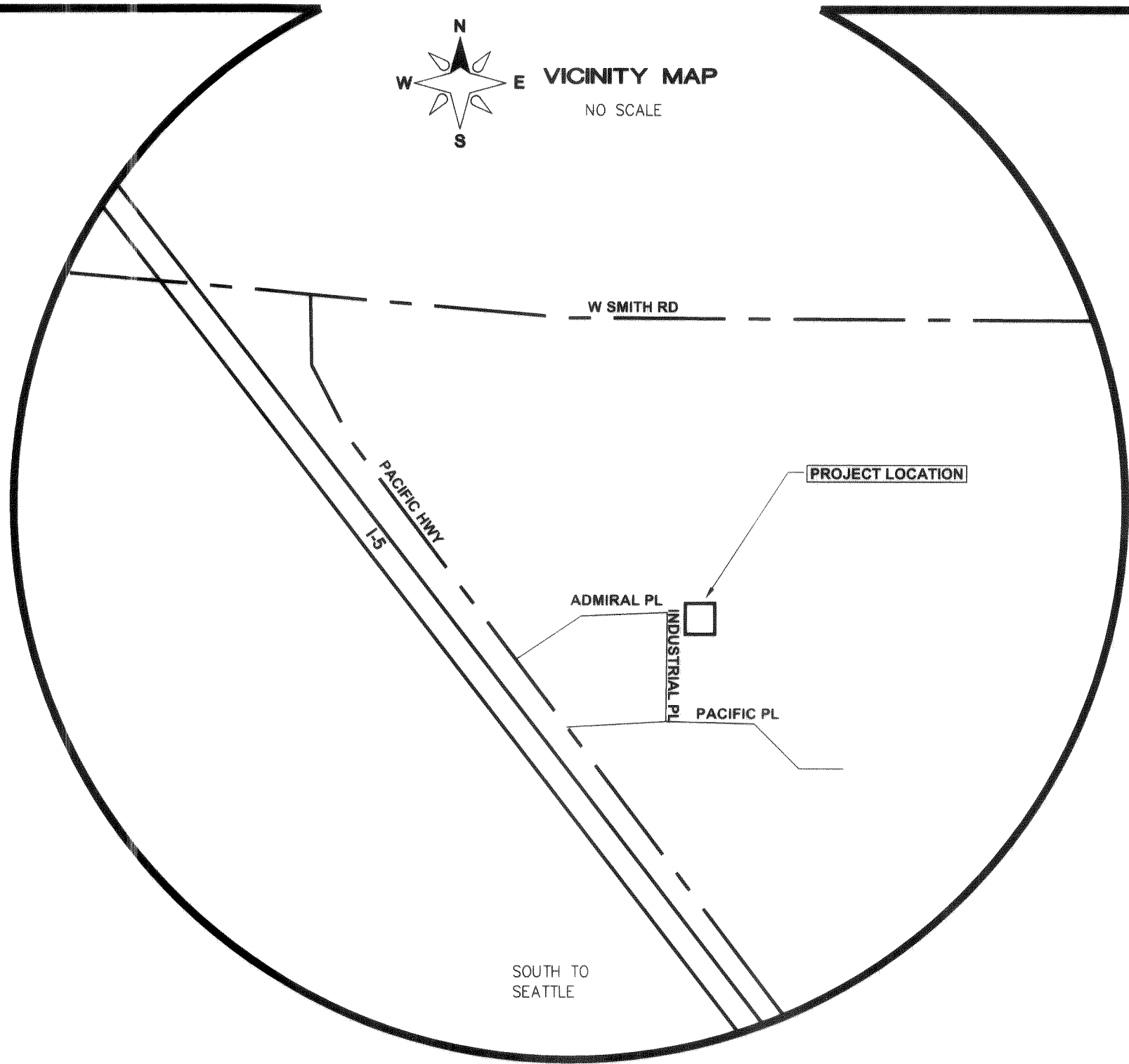


A PORTION OF THE NORTHEAST QUARTER OF SECTION 33, T39N, R2E, W.M.

PACIFIC INDUSTRIAL PARK LOT 21

As-Built Plans

00360.001 1-28-08 KZ



1. COVER SHEET
2. AS-BUILT PLAN

LEGEND

	= EXIST SANITARY SEWER MANHOLE		= AS-BUILT STUB MARKERS
	= EXIST FIRE HYDRANT		= AS-BUILT STORM DRAIN CATCH BASIN
	= EXIST WATER VALVE		= AS-BUILT STORM DRAIN MANHOLE (TYPE 2)
	= EXIST ASPHALT		= AS-BUILT STORM DRAIN LINE
	= EXIST SANITARY SEWER LINE		= AS-BUILT WATER LINE
	= EXIST STORM DRAIN LINE		= AS-BUILT METER BOX
	= EXIST CONTOUR (INDEX)		= AS-BUILT WATER HYDRANT
	= EXIST CONTOUR (NORMAL)		= AS-BUILT GATE VALVE
	= EXIST CULVERT		= AS-BUILT SAN. SEWER LINE
	= EXIST DITCHLINE		= AS-BUILT SANITARY SEWER SERVICE
	= EXIST ROAD EDGE OF PAVEMENT		= AS-BUILT SEWER CLEANOUT
	= EXIST SURVEY BOUNDARY LINE		= AS-BUILT SEWER MANHOLE
	= EXIST EASEMENT LINE		= AS-BUILT DITCH
	= EXIST UNDERGROUND POWER		= AS-BUILT 1' CONTOUR
	= EXIST GAS MAIN		= AS-BUILT ASPHALT
	= EXIST WATER LINE		= AS-BUILT CONC. SIDEWALK
	= AS BUILT		= EXISTING ASPHALT TO BE REMOVED AT A LATER TIME
			= EXISTING ULTRA BLOCK WALL (MAX. HEIGHT= 4.5)

DRAWN BY: SR DATE: 01/09/07
CHECKED BY: DATE:

PACIFIC INDUSTRIAL PARK LOT 21

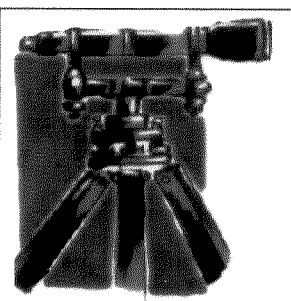
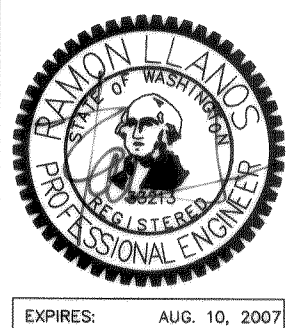
JOB # 04531

FOR: SAM BOULOS
PO BOX 189 FERNDAL WA 98248

RECORD DRAWINGS PROFESSIONAL CERTIFICATION

"I HEREBY CERTIFY THAT THE IMPROVEMENTS IN PACIFIC INDUSTRIAL PARK LOT 21 HAVE BEEN INSPECTED BY LDES AND CONSTRUCTED IN CONFORMANCE WITH THE PLANS APPROVED BY THE PUBLIC WORKS DIRECTOR FOR SAID DEVELOPMENT AND THE GENERAL SPECIFICATIONS ADOPTED BY THE CITY OF FERNDAL DEPARTMENT OF PUBLIC WORKS."

RAMON LLANOS, PE DATE: 1/9/07

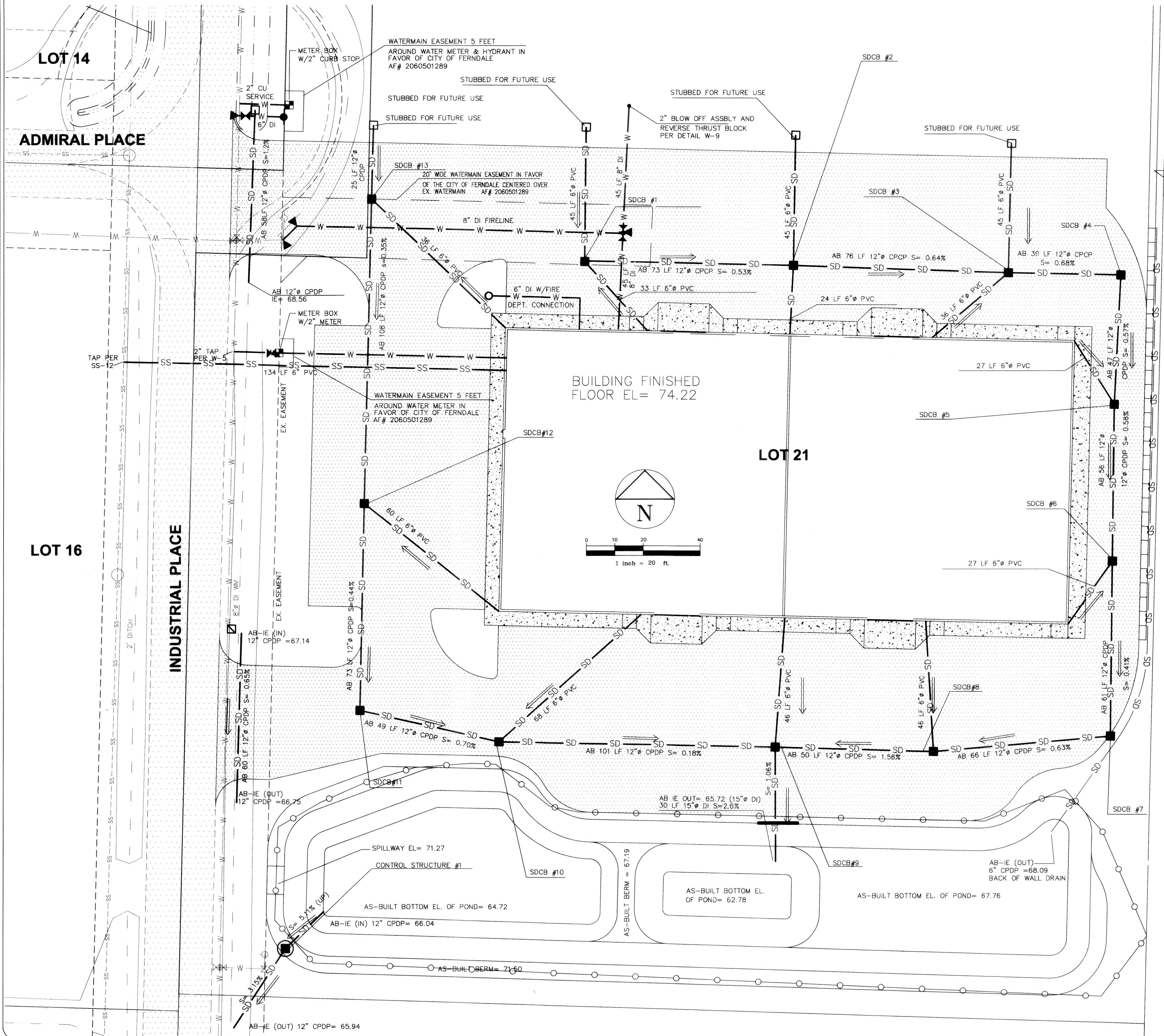


LDES, INC.
1350 SLATER RD. SUITE 9
FERNDAL, WA 98248
PHONE 360-383-0620
FAX 360-383-0639

PACIFIC INDUSTRIAL PARK LOT 21
COVER SHEET

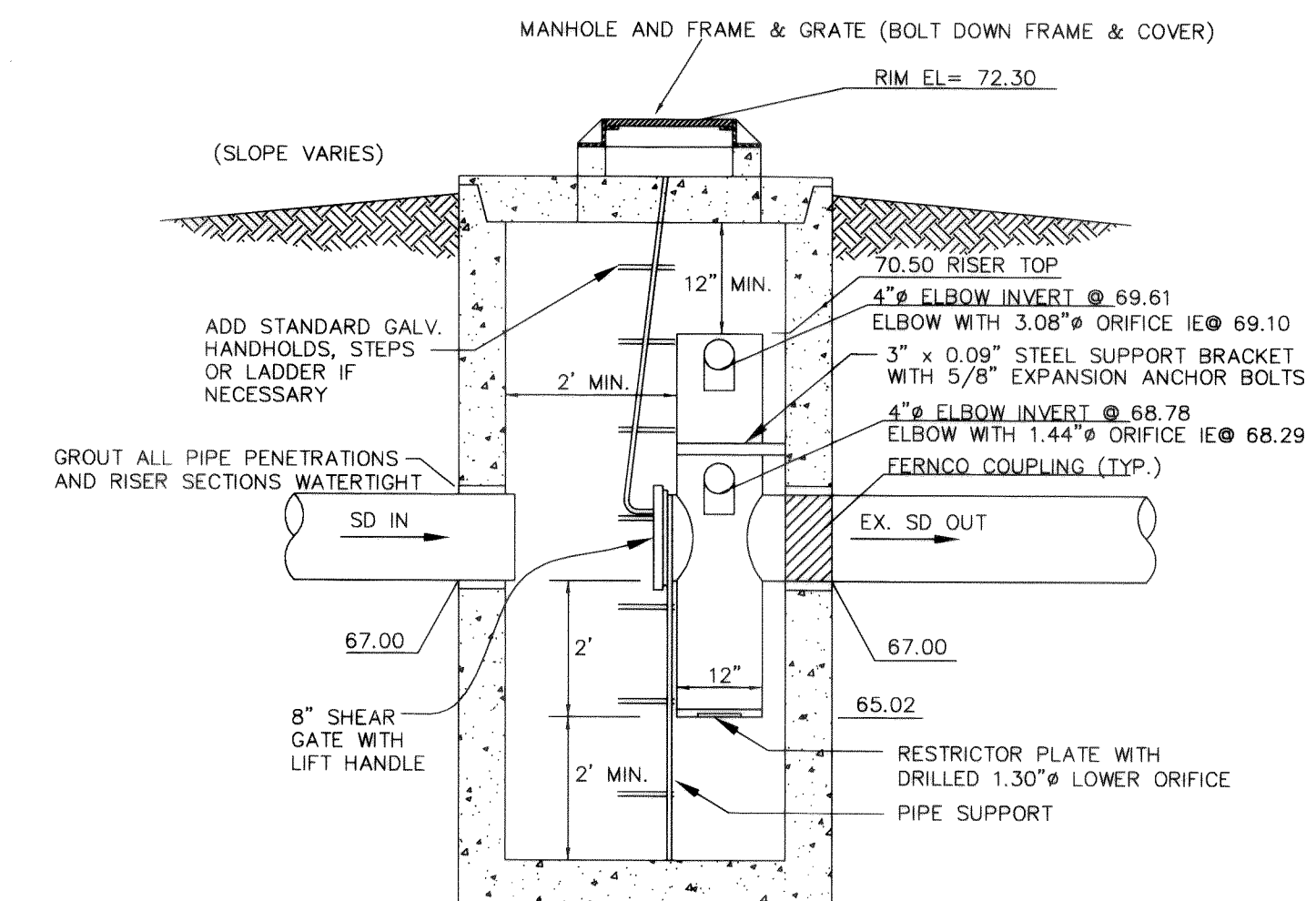
APPROVED
JAN 22 2007
BY: JCS
CITY OF FERNDAL

SHEET
1
OF
2



AS-BUILT CONTROL STRUCTURE #1

NOT TO SCALE



GENERAL NOTES:

1. ELBOW DIAMETERS SHALL BE LARGER THAN ORIFICE DIAMETERS, TYPICAL.
2. ALL PARTS SHALL BE STAINLESS STEEL, ALUMINUM, OR ALUMINIZED STEEL.
3. OFFSET FRAME AND LADDER OR STEPS SO CLEANOUT GATE IS VISIBLE FROM TOP AND SO CLIMB-DOWN SPACE IS CLEAR OF RISER AND CLEANOUT GATE.
4. LOCATE ELBOW RESTRICTOR(S) AS NECESSARY TO PROVIDE MINIMUM CLEARANCE AS SHOWN.
5. USE EX. MANHOLE AS FEASIBLE AND INSTALL NEW INLET PIPE AND OUTLET CONTROL STRUCTURE.

AS-BUILT CB INVERTS TABLE

INSTALL: TYPE 1 SDCB #1 RIM= 73.55 IE IN (SE)= 70.96 (6" PVC) IE IN (N)= 70.35 (6" PVC) IE OUT (E)= 70.38 (12" CPDP)	INSTALL: TYPE 1 SDCB #2 RIM= 73.13 IE IN (W)= 69.99 (12" CPDP) IE IN (S)= 70.71 (6" PVC) IE IN (N)= 70.35 (6" PVC) IE OUT (E)= 69.99 (12" CPDP)	INSTALL: TYPE 1 SDCB #3 RIM= 73.17 IE IN (W)= 69.61 (12" CPDP) IE IN (N)= 69.71 (6" PVC) IE IN (SW)= 70.37 (6" PVC) IE OUT (E)= 69.63 (12" CPDP)	INSTALL: TYPE 1 SDCB #4 RIM= 73.10 IE IN (W)= 69.36 (12" CPDP)
INSTALL: TYPE 1 SDCB #5 RIM= 72.77 IE IN (N)= 69.05 (12" CPDP) IE IN (NW)= 70.59 (6" PVC) IE OUT (S)= 69.05 (12" CPDP)	INSTALL: TYPE 1 SDCB #6 RIM= 72.86 IE IN (N)= 68.73 (12" CPDP) IE IN (SW)= 69.38 (6" PVC) IE OUT (S)= 68.75 (12" CPDP)	INSTALL: TYPE 1 SDCB #7 RIM= 72.84 IE IN (N)= 68.50 (12" CPDP) IE OUT (W)= 68.48 (12" CPDP)	INSTALL: TYPE 1 SDCB #8 RIM= 72.30 IE IN (N)= 68.70 (6" PVC) IE IN (NE)= 68.09 (12" CPDP) IE OUT (E)= 68.11 (12" CPDP)
INSTALL: TYPE 1 SDCB #9 RIM= 71.58 IE IN (N)= 68.19 (6" PVC) IE IN (E)= 67.25 (12" CPDP) IE IN (W)= 66.16 (12" CPDP) IE OUT (S)= 66.15 (15" DI)	INSTALL: TYPE 1 SDCB #10 RIM= 71.88 IE IN (NW)= 67.39 (12" CPDP) IE IN (NE)= 67.88 (6" PVC) IE OUT (E)= 66.33 (12" CPDP)	INSTALL: TYPE 1 SDCB #11 RIM= 70.45 IE IN (N)= 67.68 (12" CPDP) IE OUT (SE)= 67.64 (12" CPDP)	INSTALL: TYPE 1 SDCB #12 RIM= 72.18 IE IN (N)= 68.20 (12" CPDP) IE OUT (S)= 68.00 (12" CPDP) IE IN (SE)= 69.65 (6" PVC)
INSTALL: TYPE 1 SDCB #13 RIM= 72.32 IE IN (N)= 68.57 (12" CPDP) IE IN (E)= 68.99 (6" CPDP) IE OUT (S)= 68.58 (12" CPDP)	CONTROL STRUCTURE #1 RIM= 72.30 IE IN (NE)= 67.00 (12" DI) IE OUT (NW)= 67.00 (12" CPDP) 4" ELBOW INVERT @ 70.02 WITH 3.08" ORIFICE 4" ELBOW INVERT @ 69.22 WITH 1.44" ORIFICE		

DRAWN BY: SR DATE 01/09/07

CHECKED BY: DATE

PACIFIC INDUSTRIAL PARK LOT 21

JOB # 04531

FOR: **SAM BOULOS**
PO BOX 189 FERNDAL WA 98248

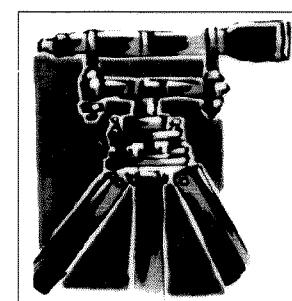
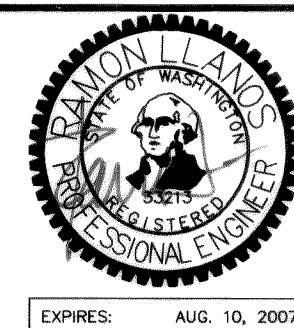
RECORD DRAWINGS PROFESSIONAL CERTIFICATION

I HEREBY CERTIFY THAT THE IMPROVEMENTS IN PACIFIC INDUSTRIAL PARK LOT 21 HAVE BEEN INSPECTED BY LDES AND CONSTRUCTED IN CONFORMANCE WITH THE PLAN APPROVED BY THE PUBLIC WORKS DIRECTOR FOR SAID DEVELOPMENT AND THE GENERAL SPECIFICATIONS ADOPTED BY THE CITY OF FERNDAL DEPARTMENT OF PUBLIC WORKS.

Ramon Llanos, PE
RAMON LLANOS, PE

1/1/07

DATE



LDES, INC.
1350 SLATER RD. SUITE 9
FERNDAL, WA 98248
PHONE 360-383-0620
FAX 360-383-0639

PACIFIC INDUSTRIAL PARK LOT 21 AS-BUILT PLAN

APPROVED
By: *[Signature]*
CITY OF FERNDAL

SHEET

2

OF 2