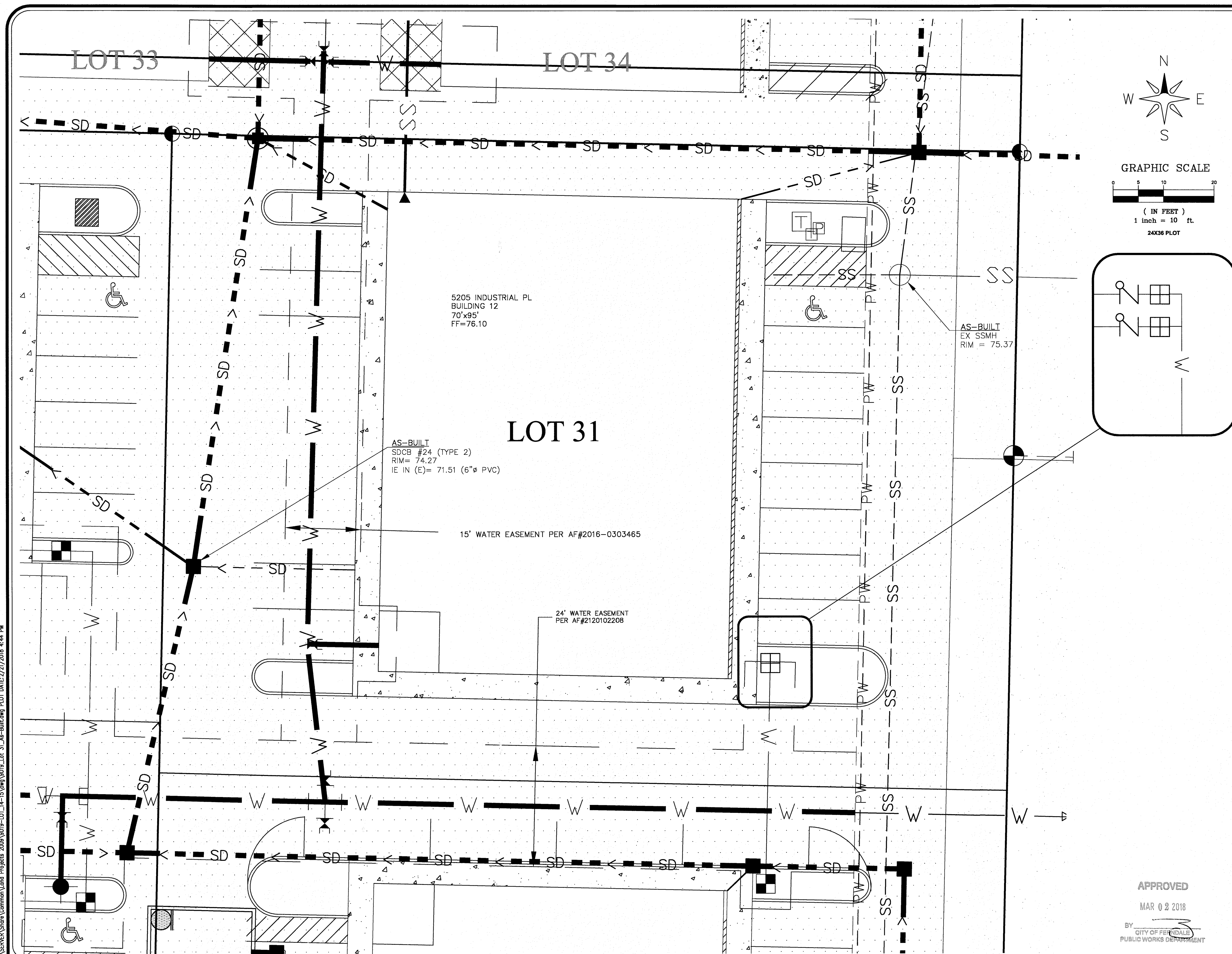
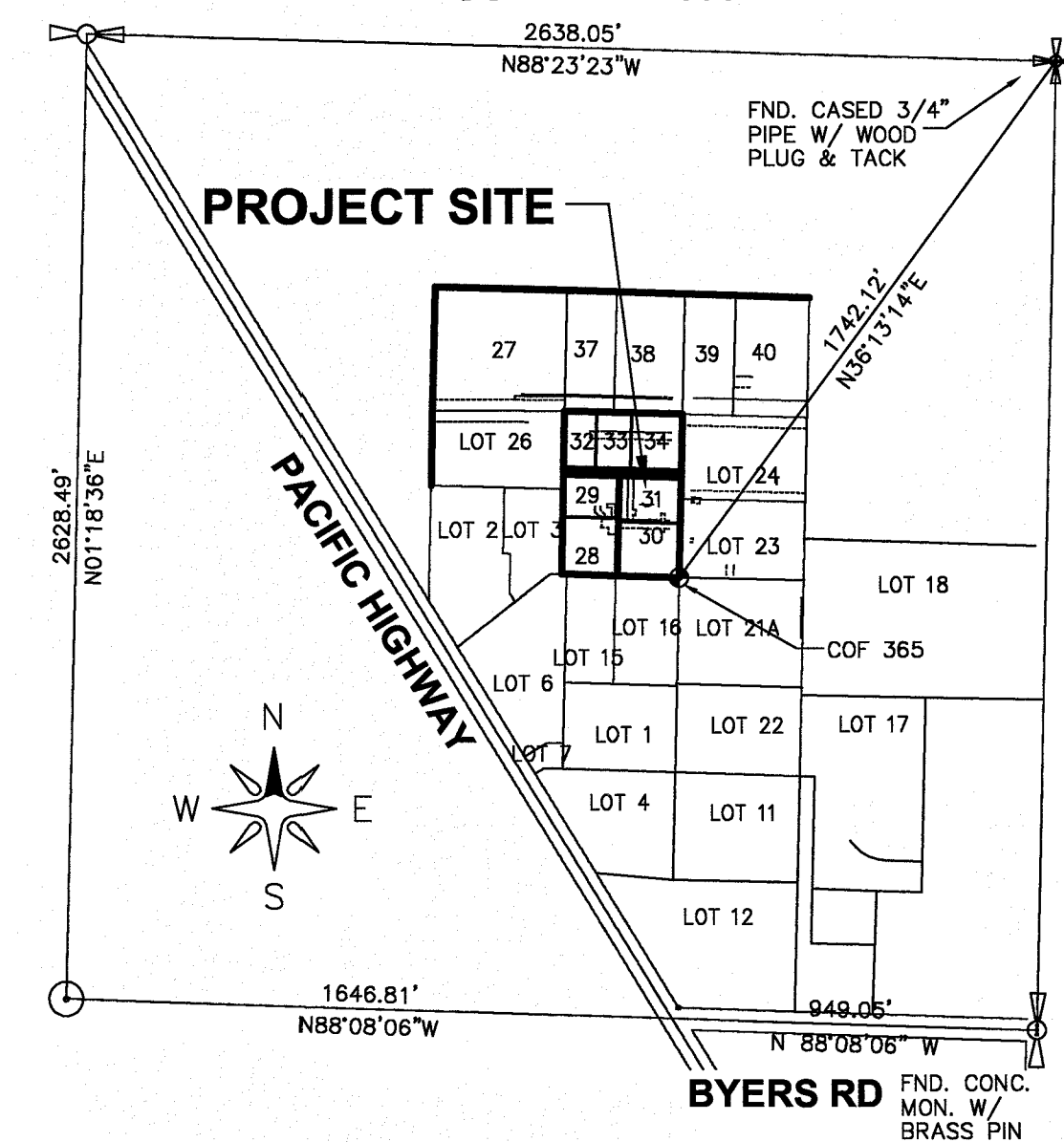


\\SERVER\Share\Common\Land Projects\2008\9019-LOT\_14-15\9019-LOT\_31\_As-Built.dwg PLOT DATE: 2/21/2018 4:44 PM



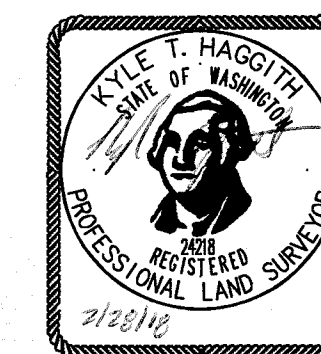
## COMPOSITE UTILITY PLAN

JOB NO. 9019

SECTION BREAKDOWN  
SECTION 33, TOWNSHIP 39 NORTH, RANGE 2 EAST., W.M.  
SCALE 1" = 500'

**SURVEYOR'S CERTIFICATION**  
I CERTIFY THAT THE LOCATIONS, ELEVATIONS, DEPTHS, AND AS-BUILT COMMENTS REFLECTING MATERIALS ACTUALLY USED DURING CONSTRUCTION ACCURATELY REFLECT EXISTING FIELD CONDITIONS AS DETERMINED BY ME OR UNDER MY DIRECT SUPERVISION ON THIS DATE: FEB 28, 2018

Kyle T. Haggit  
KYLE HAGGITH, P.L.S.



## LEGEND:

- = EXIST SD CATCH BASIN (TYPE 1)
- = EXIST SD CATCH BASIN (TYPE 2)
- = EXIST SANITARY SEWER MANHOLE
- = EXIST SANITARY SEWER CLEANOUT
- = EXIST SANITARY SEWER SERVICE
- = EXISTING WATER METER BOX
- = EXISTING CHECK VALVE
- = EXISTING WATER VALVE
- = EXISTING FIRE HYDRANT
- = EXIST UNDERGROUND POWER
- = EXIST UNDERGROUND TV CABLE
- = EXIST GAS MAIN
- = EXIST WATER LINE
- = EXIST WATER LINE
- = EXIST SANITARY SEWER LINE
- = EXIST SANITARY SEWER LINE
- = EXIST STORM DRAIN LINE
- = EXIST STORM DRAIN LINE

APPROVED

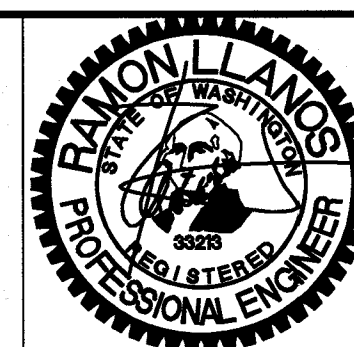
MAR 02 2018

BY: [Signature]  
CITY OF FERDALE  
PUBLIC WORKS DEPARTMENT

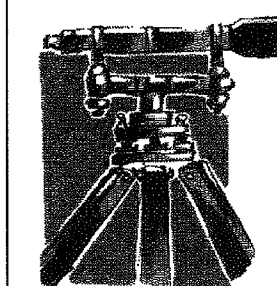
PACIFIC INDUSTRIAL PARK

JOB # 9019

FOR: **SAM BOULOS**  
PO BOX 189 FERDALE WA 98248



**ENGINEER'S CERTIFICATION**  
I HEREBY CERTIFY THAT THE IMPROVEMENTS IN "PIP LOT 31" HAVE BEEN INSPECTED BY LDES AND TO THE BEST OF MY KNOWLEDGE, HAVE BEEN CONSTRUCTED IN CONFORMANCE WITH THE CITY OF FERDALE DEVELOPMENT STANDARDS, THE CITY OF FERDALE MUNICIPAL CODE, SUBSEQUENT STANDARDS ADOPTED BY REFERENCE THEREIN, AND STANDARD ENGINEERING PRACTICE.  
[Signature] 2/21/18  
RAMON LLANOS, P.E.



**LDES, INC.**  
5160 INDUSTRIAL PL #108  
FERDALE, WA 98248  
PHONE 360-383-0620  
FAX 360-383-0639

PACIFIC INDUSTRIAL PARK

LOT 31 AS-BUILT

REVISIONS - COMMENTS

REVISIONS -	COMMENTS

SHEET

01

OF 01