

VICINITY MAP
SCALE 1"=500'

DRAWING INDEX

SHEET NO. DRAWING TITLE

C1.0 COVER SHEET

C2.0 PLAN AND PROFILE

C3.0 DETAILS

LEGEND

EXISTING	PROPOSED	DESCRIPTION
---	---	POWER
---	---	TELEPHONE
---	---	GAS
---	---	STORM DRAINAGE
---	---	SEWER
---	---	WATER
---	---	INDEX CONTOURS
---	---	NORMAL CONTOURS
---	---	EDGE OF PAVEMENT
---	---	DITCH
---	---	PROPERTY LINE
---	---	EASEMENT LINE
---	---	SURVEY SECTION LINE
---	---	CENTER LINE
---	---	BUILDING FOOTPRINT
---	---	CULVERT
---	---	FIRE HYDRANT
---	---	STORM DRAIN CATCH BASIN
---	---	SANITARY SEWER MANHOLE
---	---	GATE VALVE
---	---	POWER POLE
---	---	POWER VAULT
---	---	TELEPHONE VAULT
---	---	SIGN
---	---	STREET LIGHT

APPROVED

SEP 27 2002

BY *[Signature]*
CITY OF FERNDAL

PACIFIC INDUSTRIAL PARK

CIVIL IMPROVEMENTS

CONTRACT DRAWINGS

FOR

PRIVATE ROAD

CITY OF FERNDAL

WHATCOM COUNTY, WASHINGTON

CONSULTING ENGINEERS: DAVID EVANS AND ASSOCIATES

OWNER: TRILLIUM CORPORATION

CONTACT PERSON: JON SYRE

NOTES

GENERAL NOTES

- ALL WORK AND MATERIALS SHALL BE IN ACCORDANCE WITH THE 2000 WASHINGTON STATE DEPARTMENT OF TRANSPORTATION STANDARD SPECIFICATIONS (STANDARD SPECIFICATIONS) AND STANDARD PLANS (STANDARD PLANS) FOR ROAD, BRIDGE, AND MUNICIPAL CONSTRUCTION AND THE CITY OF FERNDAL DEVELOPMENT STANDARDS (C.O.F. STANDARDS), LATEST EDITION. ALL WORK AND MATERIAL SHALL BE SUBJECT TO APPROVAL BY THE CITY OF FERNDAL.
- UNDERGROUND UTILITIES ARE KNOWN TO EXIST IN THE AREA OF CONSTRUCTION. THE LOCATION OF EXISTING UTILITIES SHOWN ON THE PROJECT DRAWINGS ARE APPROXIMATE. THE CONTRACTOR IS RESPONSIBLE FOR CONTACTING ALL UTILITY OWNERS FOR LOCATIONS AND TO FIELD VERIFY ALL UTILITY LOCATIONS PRIOR TO CONSTRUCTION. THE ONE-CALL NUMBER FOR UNDERGROUND UTILITY LOCATES IS 1-800-424-5555. THE CONTRACTOR SHALL BE RESPONSIBLE FOR MAINTAINING THE INTEGRITY OF ALL EXISTING UTILITIES AND FOR NOTIFYING THE ENGINEER PROMPTLY OF ANY CONFLICTS WITH EXISTING UTILITIES.
- PUBLIC RIGHTS-OF-WAY SHALL BE KEPT IN A CLEAN AND SERVICEABLE CONDITION AT ALL TIMES. IN THE EVENT THAT MATERIALS ARE INADVERTENTLY DEPOSITED IN PUBLIC RIGHTS-OF-WAY, THE MATERIAL SHALL BE PROMPTLY REMOVED. MATERIALS ARE TO BE SWEEPED AND REMOVED PRIOR TO ANY STREET WASHING. PUBLIC AND PRIVATE DRAINAGE WAYS SHALL BE PROTECTED FROM POLLUTION AND SEDIMENTATION. FAILURE TO MEET THESE REQUIREMENTS MAY RESULT IN VIOLATION OF STATE OR FEDERAL WATER QUALITY STANDARDS.
- THE CONTRACTOR SHALL BE RESPONSIBLE FOR KEEPING AS-BUILT INFORMATION. AS-BUILT DRAWINGS SHALL INCLUDE THE EXACT LOCATION OF ALL UNDERGROUND AND ABOVE-GROUND UTILITIES. UPON COMPLETION OF THE PROJECT, THESE AS-BUILT DRAWINGS SHALL BE GIVEN TO THE PROJECT ENGINEER FOR INCORPORATION INTO THE PROJECT'S AS-BUILT DRAWINGS.
- THE CONTRACTOR SHALL BE RESPONSIBLE FOR MAINTAINING EROSION CONTROL MEASURES (SILT FENCE, STRAW BALE DAMS, SILT PONDS, ETC.), THROUGHOUT THE DURATION OF THE PROJECT. EROSION CONTROL MEASURES SHALL BE INSTALLED PRIOR TO ANY CLEARING OR GRADING.
- ALL HARD SURFACE PAVEMENTS MUST BE REPAIRED AT THE CLOSE OF EACH WORK DAY. THE REPAIRS CAN BE TEMPORARY WITH ASPHALT COLD MIX OR PERMANENT WITH HOT MIX ASPHALT OR CONCRETE.

CITY OF FERNDAL WATER MAIN SPECIFICATIONS

- ALL WORK AND MATERIALS SHALL BE IN ACCORDANCE WITH THE STANDARD SPECIFICATIONS, SECTIONS 7-08 TO 7-15 AND THE C.O.F. STANDARDS, SECTION 705, AND SHALL BE SUBJECT TO APPROVAL BY THE CITY OF FERNDAL.
- ALL WORK MUST BE INSPECTED AND APPROVED BY A REPRESENTATIVE OF THE CITY OF FERNDAL DEPARTMENT OF PUBLIC WORKS. 24-HOURS NOTICE MUST BE GIVEN PRIOR TO STARTING WORK OR TO SCHEDULE INSPECTIONS.
- ALL WATER MAIN PIPE SHALL BE DUCTILE IRON, THICKNESS CLASS 50, WITH CEMENT LINING IN ACCORDANCE WITH A.W.W.A. STANDARD C151-71 AND CEMENT LINING C104.
- PIPE LAYING SHALL BE IN ACCORDANCE WITH THE STANDARD SPECIFICATIONS, SECTION 7-11. ALL PIPE SHALL HAVE A MINIMUM COVER OF 3.5 FEET.
- ALL VALVES SHALL BE RESILIENT SEAT GATE VALVES IN ACCORDANCE WITH C.O.F. STANDARDS, SECTION 705.B.3.
- ALL FIRE HYDRANTS SHALL BE IN ACCORDANCE WITH C.O.F. STANDARDS, DRAWING NO. W-1, AND PAINTED TO C.O.F. SPECIFICATIONS.
- ALL BLOW OFFS SHALL BE IN ACCORDANCE WITH C.O.F. STANDARDS, DRAWING NO. W-9 FOR EXTENDABLE MAIN.
- HYDROSTATIC TESTING AND DISINFECTION OF WATER MAINS SHALL BE IN ACCORDANCE WITH THE STANDARD SPECIFICATIONS, SECTIONS 7-11.3(11) AND 7-11.3(12).

WARNING
UTILITIES IN AREA
CALL UTILITY LOCATORS
PRIOR TO ANY
EXCAVATION

As-Built Drawing Certification

I hereby certify that the publicly maintained improvements in Pacific Industrial Park have been located by David Evans and Associates, Inc. and constructed in conformance with the plans approved by the Public Works Director for said development and the general specifications adopted by the City of Ferndal Department of Public Works.

STREET SPECIFICATIONS

- ASPHALT CONCRETE PAVEMENT SHALL BE CLASS "B". MATERIALS AND CONSTRUCTION METHODS SHALL BE IN ACCORDANCE WITH THE STANDARD SPECIFICATIONS, SECTION 5-04, EXCEPT AS MODIFIED HEREIN. CONNECTIONS TO EXISTING PAVEMENT SHALL BE TO A STRAIGHT, NEATLY-TRIMMED LINETACKED AND SEALED WITH AR4000W.
- CRUSHED ROCK SURFACING FOR PAVEMENT BASE SHALL BE IN ACCORDANCE WITH STANDARD SPECIFICATION, SECTION 9-03.9(3); BALLAST PER SECTION 9-03-9(1).
- CEMENT CONCRETE SHALL BE CLASS 3000 (WITH AIR ENTRAINMENT) IN ACCORDANCE WITH THE STANDARD SPECIFICATIONS, SECTION 6-02.3(2)B.
- CEMENT CONCRETE DRIVEWAYS SHALL BE 6 INCHES THICK AND CONSTRUCTED WHERE SHOWN ON THE PLANS OR DESIGNATED BY THE ENGINEER IN ACCORDANCE WITH C.O.F. STANDARDS, DRAWING NO. R-15. A 2-INCH LAYER OF 3/4 INCH DRAIN ROCK SHALL BE USED FOR DRIVEWAY BEDDING.

CITY OF FERNDAL SEWER SPECIFICATIONS

- ALL WORK AND MATERIALS SHALL BE IN ACCORDANCE WITH THE STANDARD SPECIFICATIONS, SECTIONS 7-08 AND 7-17 THRU 7-19(FOR SANITARY) AND THE C.O.F. STANDARDS AND SHALL BE SUBJECT TO APPROVAL BY THE CITY OF FERNDAL.
- ALL WORK MUST BE INSPECTED AND APPROVED BY A REPRESENTATIVE OF THE CITY OF FERNDAL DEPARTMENT OF PUBLIC WORKS. 24-HOURS NOTICE MUST BE GIVEN PRIOR TO STARTING WORK OR TO SCHEDULE INSPECTIONS.
- TRENCH EXCAVATION AND BEDDING SHALL BE IN ACCORDANCE WITH THE STANDARD SPECIFICATIONS, SECTION 7-08.3(1)A AND WITH C.O.F. STANDARDS, DRAWING NO. SS-1 AND SS-15.
- SANITARY PIPE MATERIAL SHALL BE IN ACCORDANCE WITH THE STANDARD SPECIFICATIONS, SECTION 7-17.
- PIPE LAYING SHALL MEET THE REQUIREMENTS OF THE STANDARD SPECIFICATIONS, SECTION 7-08.3(2)B.
- ALL SANITARY SIDE SEWERS SHALL BE CONSTRUCTED IN ACCORDANCE WITH C.O.F. STANDARDS, DRAWING NO. SS-6, SS-B, AND SS-12.
- STORMWATER PIPE SHALL BE HANCOR SURE-LOK F477 PIPE OR ENGINEERING APPROVED EQUAL.

AS-BUILT DRAWING - 07/08/02

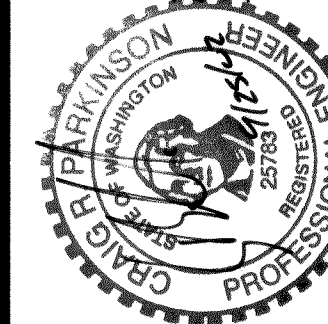
PACIFIC INDUSTRIAL PARK
CIVIL IMPROVEMENTS

0045.001 2.14.00



DAVID EVANS
AND ASSOCIATES, INC.

119 GRAND AVENUE, SUITE D
BELLINGHAM, WA 98225-4400
(800) 647-1101



EXPIRES 4-28-03

REVISIONS

SHEET

3

OF

1

DESIGN

DRAWN

DATE

SCALE

N/A

7/08/02

FILE

TRILLIUM / RD-TR86CV01

DESIGN

CHK

PACIFIC INDUSTRIAL PARK
ROAD, WATER, AND DRAINAGE

DE

INC.

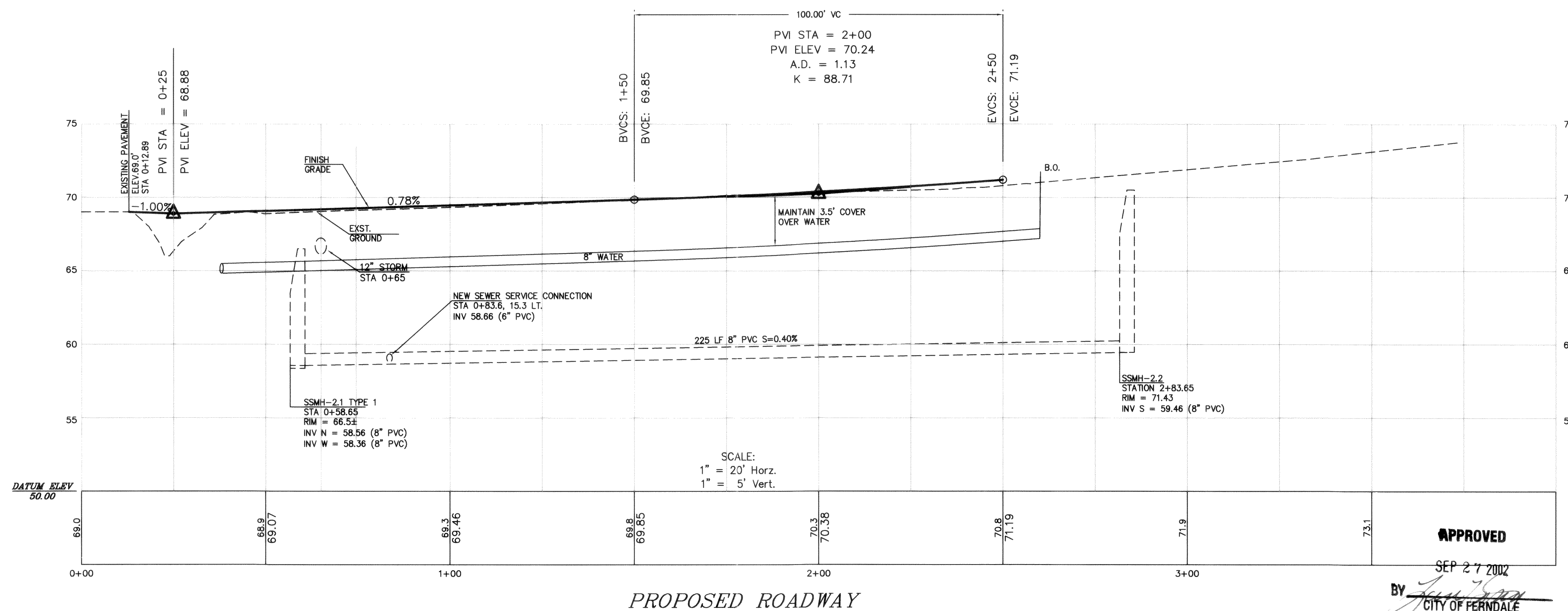
**DAVID EVANS
AND ASSOCIATES,**

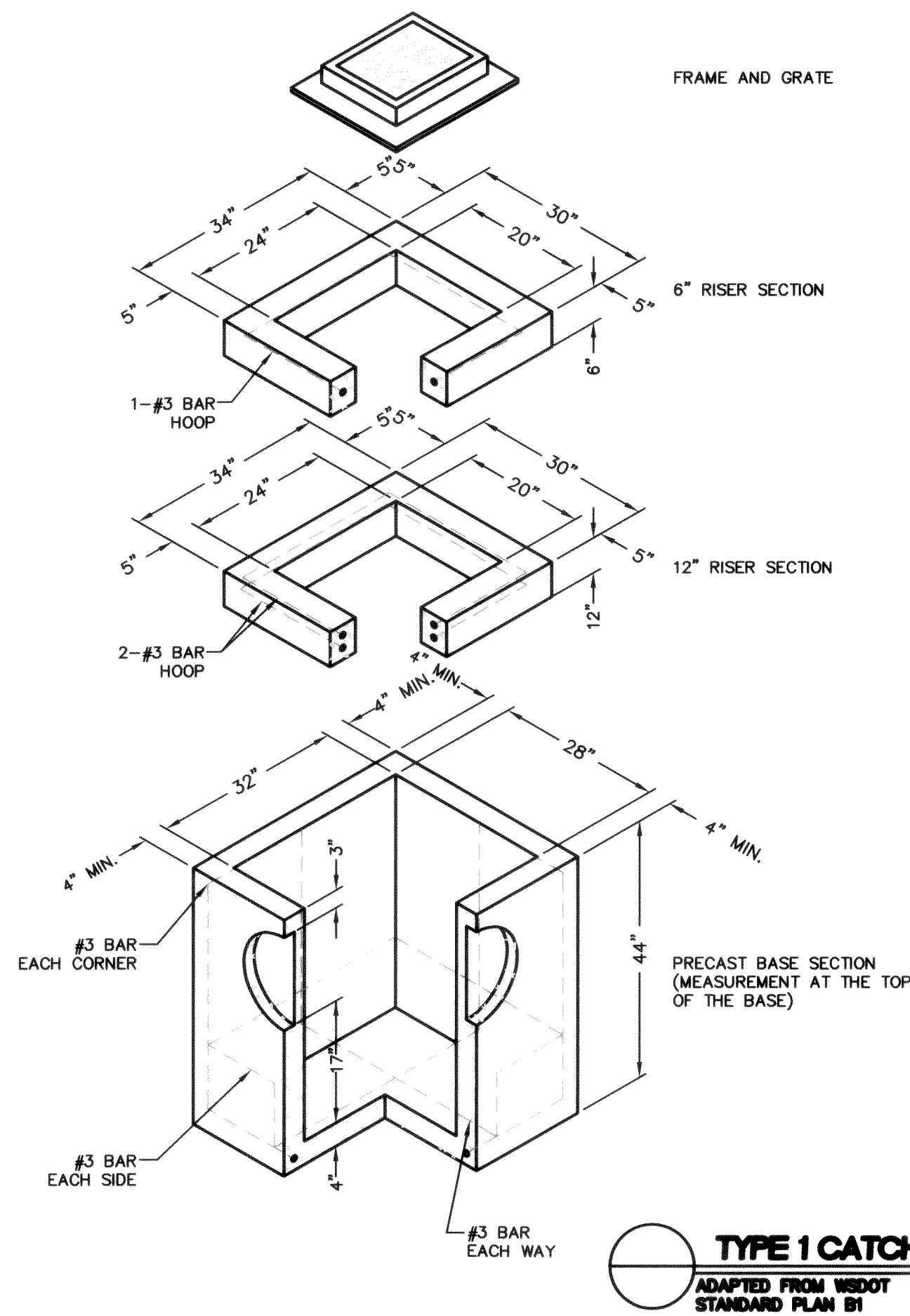
**119 GRAND AVENUE, SUITE D
BELLINGHAM, WA 98225-4400 (800) 647-7151**

**PROFESSIONAL ENGINEER
NO. 227193
WASHINGTON
FRIG. & AIR-COND. DIVISION**

EXPIRES 4-26-03

SCALE:	DESIGN: KLS
DATE: 07/08/02	DRAWN: KLS
FILE: TR\X0068 / RD-TR68PP01b	CHECKED: <i>Cal</i>





NOTES:

CATCH BASINS TO BE CONSTRUCTED IN ACCORDANCE WITH ASTM C 478 (AASHTO M 199) & ASTM C 890 UNLESS OTHERWISE SHOWN ON PLANS OR NOTED IN THE STANDARD SPECIFICATIONS.

AS AN ACCEPTABLE ALTERNATE TO REBAR, WELDED WIRE FABRIC HAVING A MINIMUM AREA OF 0.12 SQUARE INCHES PER FOOT MAY BE USED. WELDED WIRE FABRIC SHALL COMPLY TO ASTM A 497(AASHTO M 221). WIRE FABRIC SHALL NOT BE PLACED IN THE KNOCKOUTS.

THE BOTTOM OF THE PRECAST BASE SECTION MAY BE ROUNDED.

PRECAST BASES SHALL BE FURNISHED WITH CUTOUTS OR KNOCKOUTS. KNOCKOUTS SHALL HAVE A WALL THICKNESS OF 2" MINIMUM.

KNOCKOUTS MAY BE ON ALL 4 SIDES WITH MAXIMUM DIAMETER OF 20". KNOCKOUTS MAY BE EITHER ROUND OR "D" SHAPE. PIPE TO BE INSTALLED IN FACTORY SUPPLIED KNOCKOUTS.

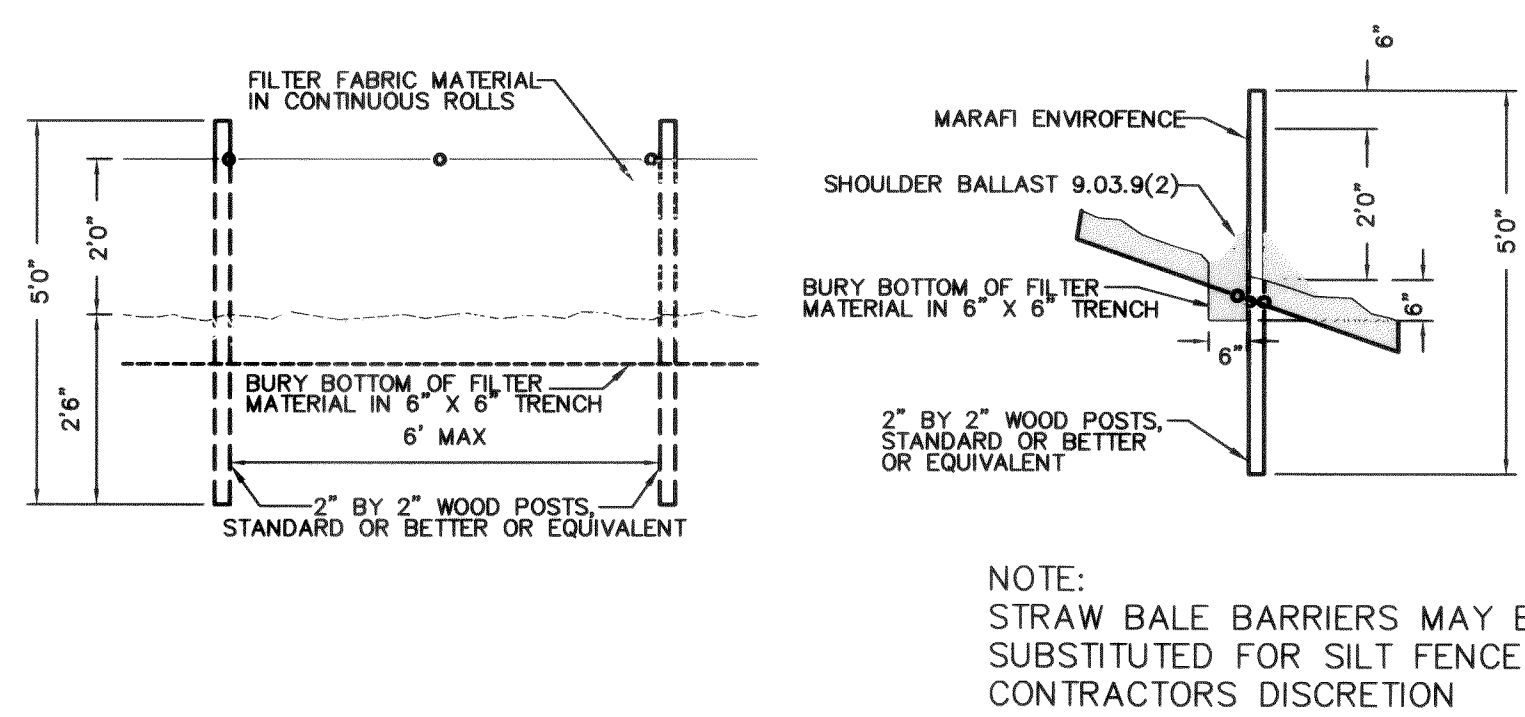
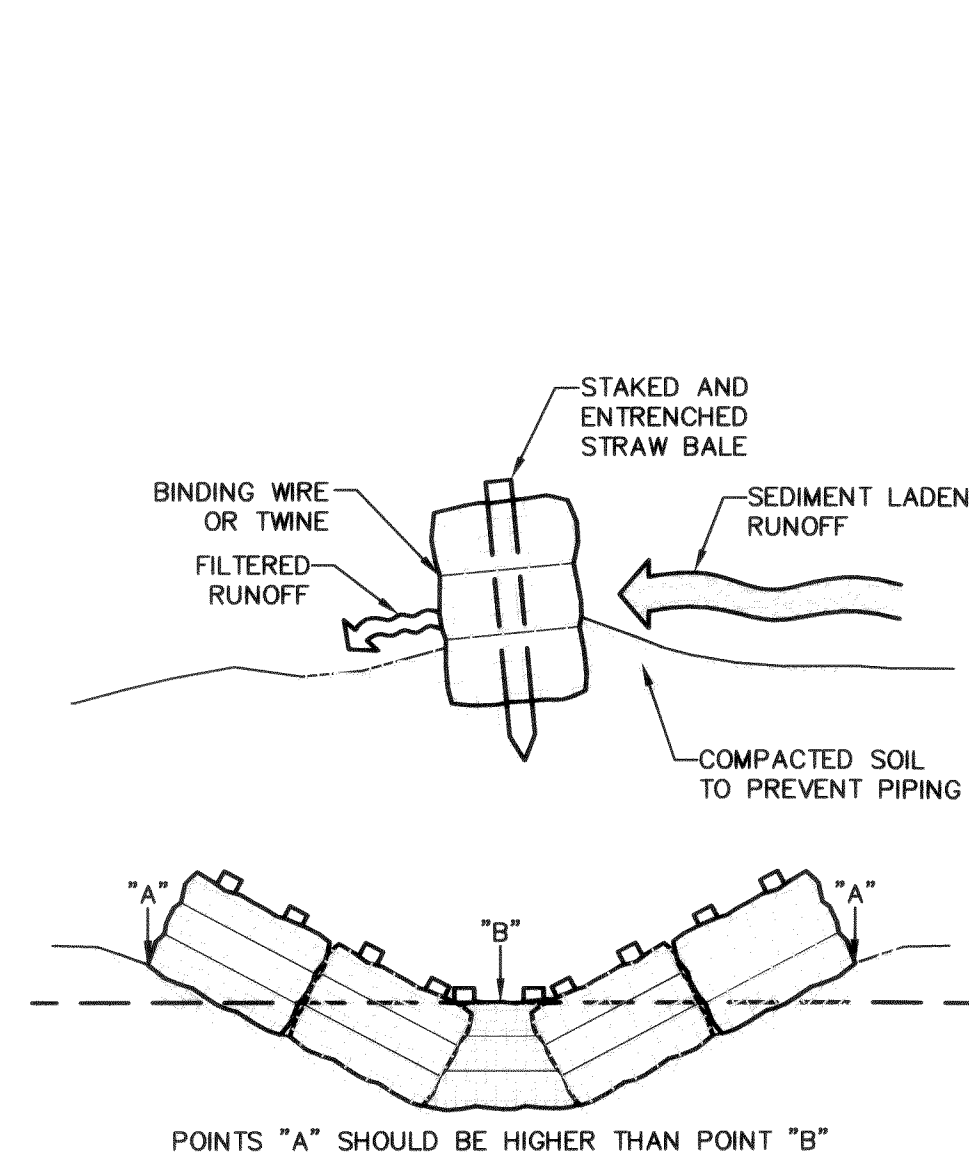
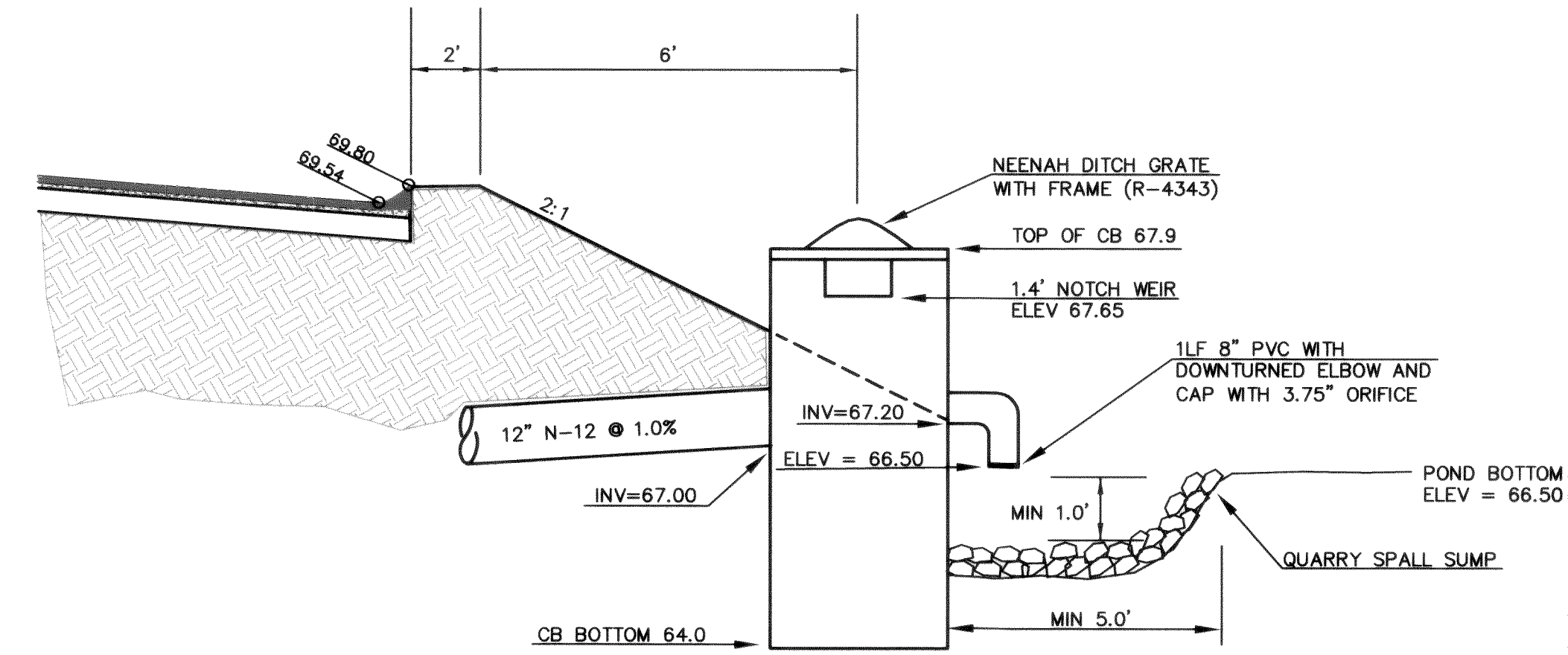
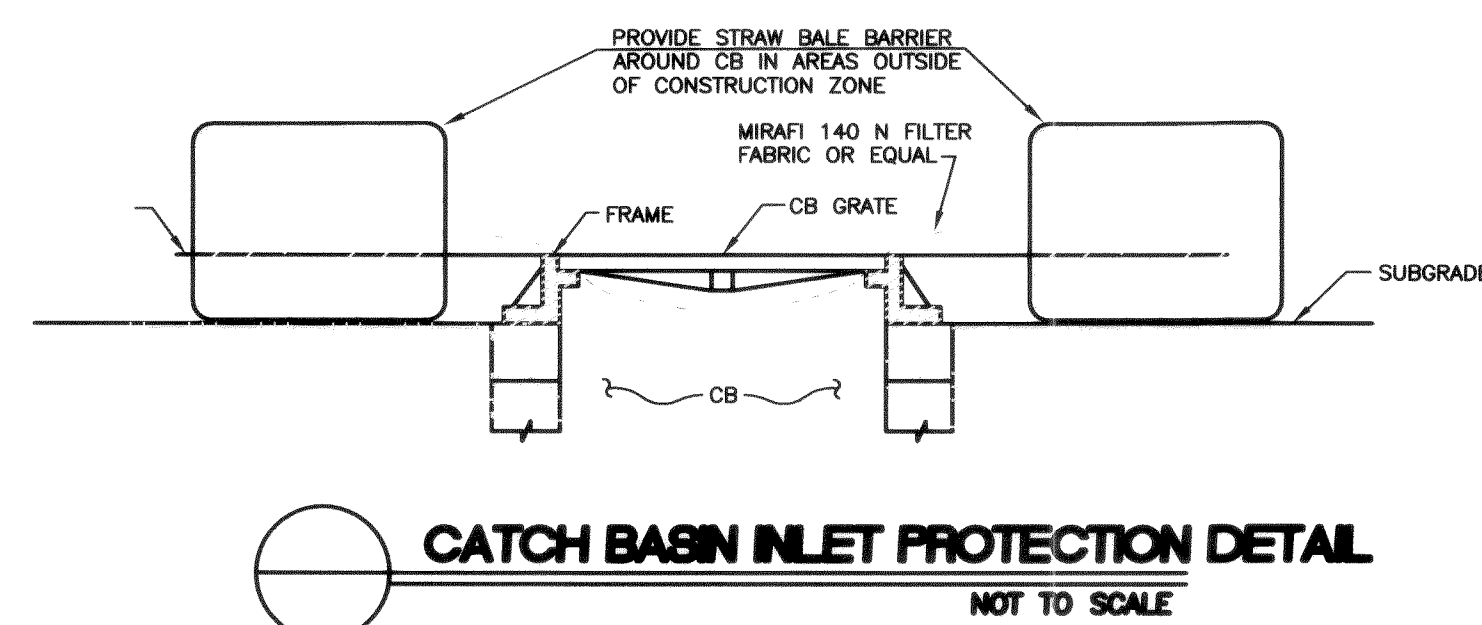
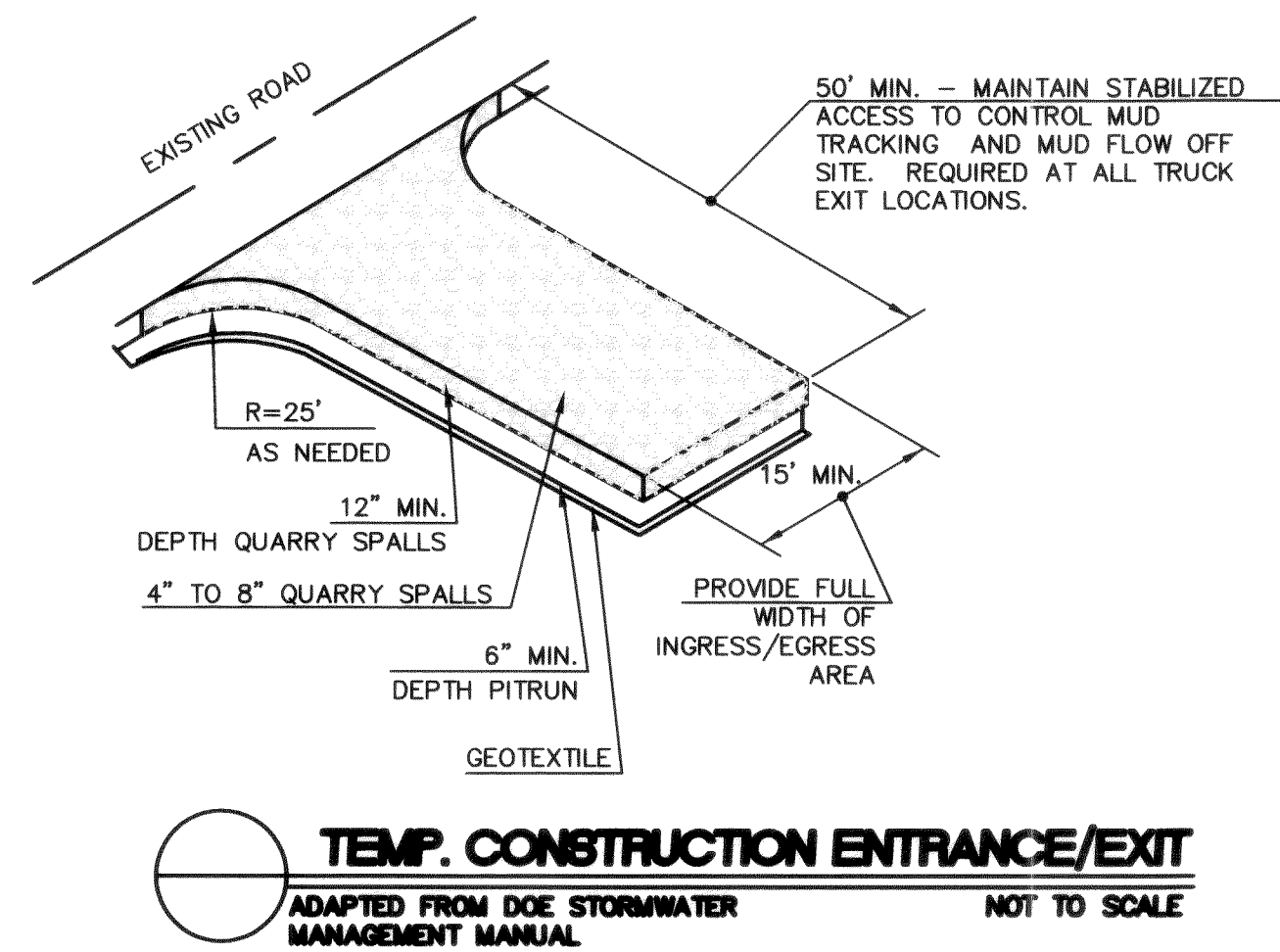
KNOCKOUT OR CUTOUT HOLE SIZE IS EQUAL TO PIPE OUTER DIAMETER PLUS CATCH BASIN WALL THICKNESS.

THE MAXIMUM DEPTH FROM THE FINISHED GRADE TO THE PIPE INVERT IS 5'-0".

THE TAPER ON THE SIDES OF THE PRECAST BASE SECTION AND RISER SECTION SHALL NOT EXCEED 1/2" / FT.

CATCH BASIN FRAME AND GRATE SHALL BE IN ACCORDANCE WITH STANDARD SPECIFICATIONS AND MEET THE STRENGTH REQUIREMENTS OF FEDERAL SPECIFICATION RR-F-62ID. MATING SURFACES SHALL BE FINISHED TO ASSURE NON-ROCKING FIT.

FRAME AND GRATE MAY BE INSTALLED WITH FLANGE DOWN OR CAST INTO RISER.



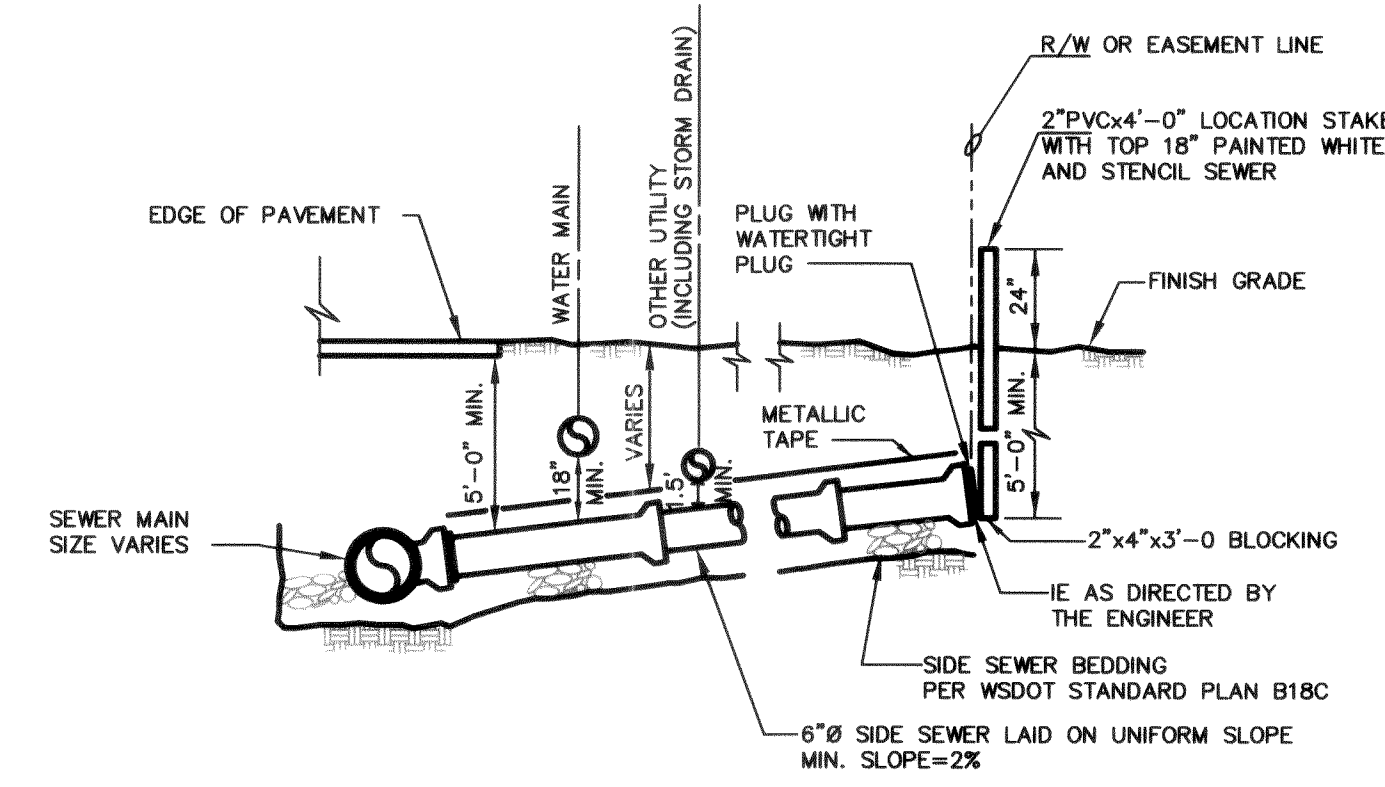
MAINTENANCE

INSPECT IMMEDIATELY AFTER EACH RAINFALL, AND AT LEAST DAILY DURING PROLONGED RAINFALL.

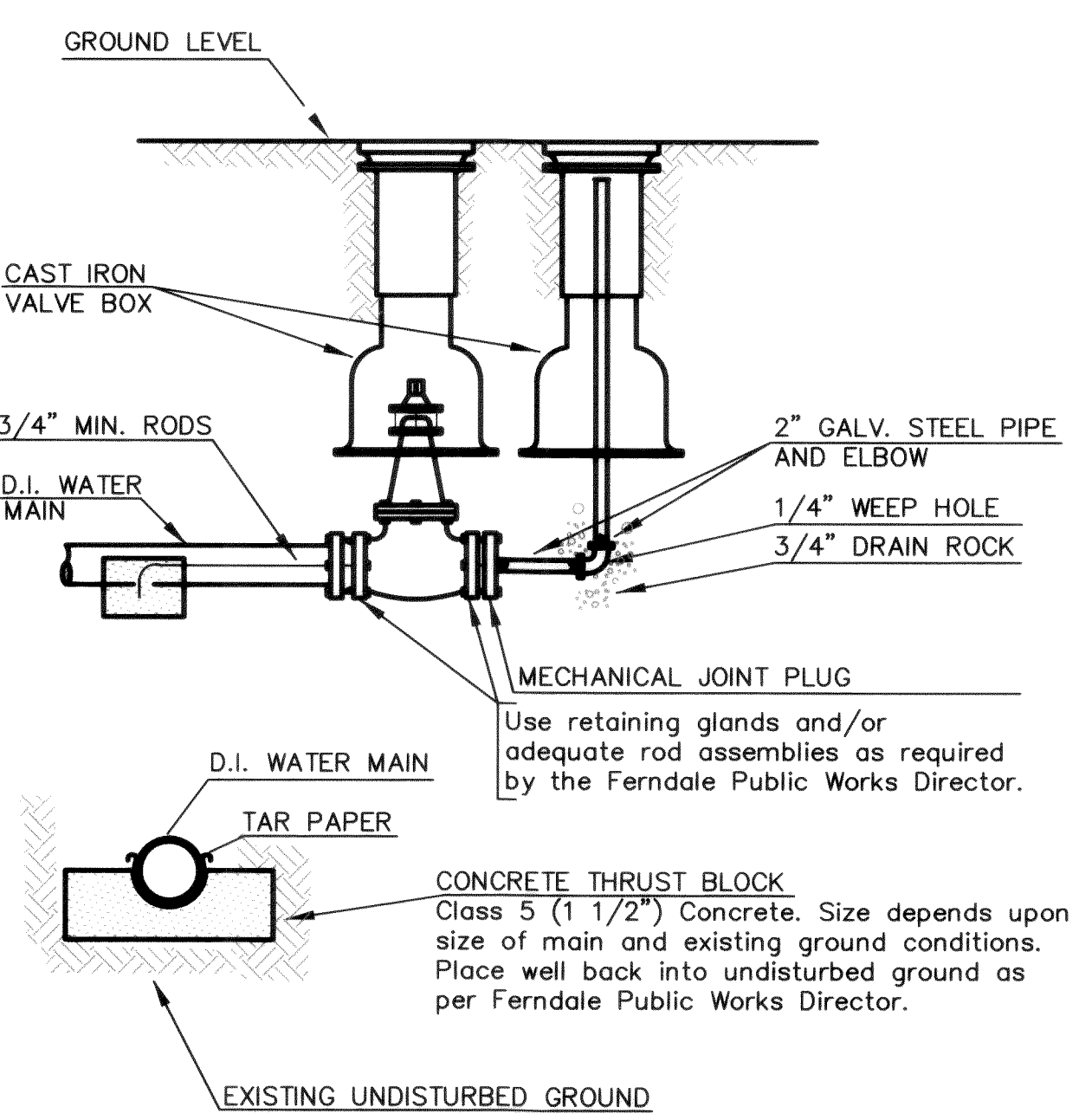
SEDIMENT MUST BE REMOVED WHEN IT REACHES APPROXIMATELY ONE THIRD THE HEIGHT OF THE FENCE, ESPECIALLY IF HEAVY RAINS ARE EXPECTED.

ANY SEDIMENT DEPOSITS REMAINING IN PLACE AFTER THE FILTER FENCE IS NO LONGER REQUIRED SHALL BE DRESSED TO CONFORM WITH THE EXISTING GRADE, PREPARED AND SEEDED.

ALL TEMPORARY EROSION AND SEDIMENT CONTROL MEASURES SHALL BE REMOVED WITHIN 30 DAYS AFTER FINAL SITE STABILIZATION IS ACHIEVED. TRAPPED SEDIMENT SHALL BE REMOVED OR STABILIZED ON SITE. DISTURBED SOIL AREAS RESULTING FROM REMOVAL SHALL BE PERMANENTLY STABILIZED.



APPROVED
SEP 27 2002
BY [Signature]
CITY OF FERNDALE



2" blow-off to be used where the main will be extended in the future. For mains with no further extension, refer to 2" blow-off, non-extendable main.

AS-BUILT DRAWING - 07/08/02

PACIFIC INDUSTRIAL PARK
DETAILS

DAVID EVANS
AND ASSOCIATES, INC.
119 GRAND AVENUE, SUITE D
BELLINGHAM, WA 98225-4400 (800) 647-7131



REVISIONS	DATE	BY	DESCRIPTION
3	9/10/01	MRB	SHEETS
3			DESIGN
	07/08/02		DRAWN: KLS
			CHECKED: CJP
			FILE: TRU0088 / RD-TR680T01

DOHS.003 2:14.00 KRP