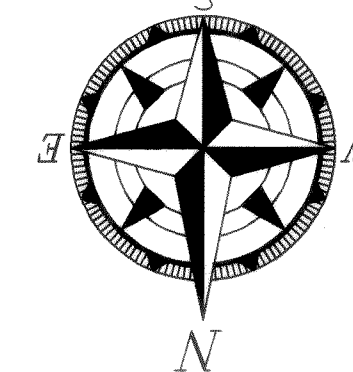


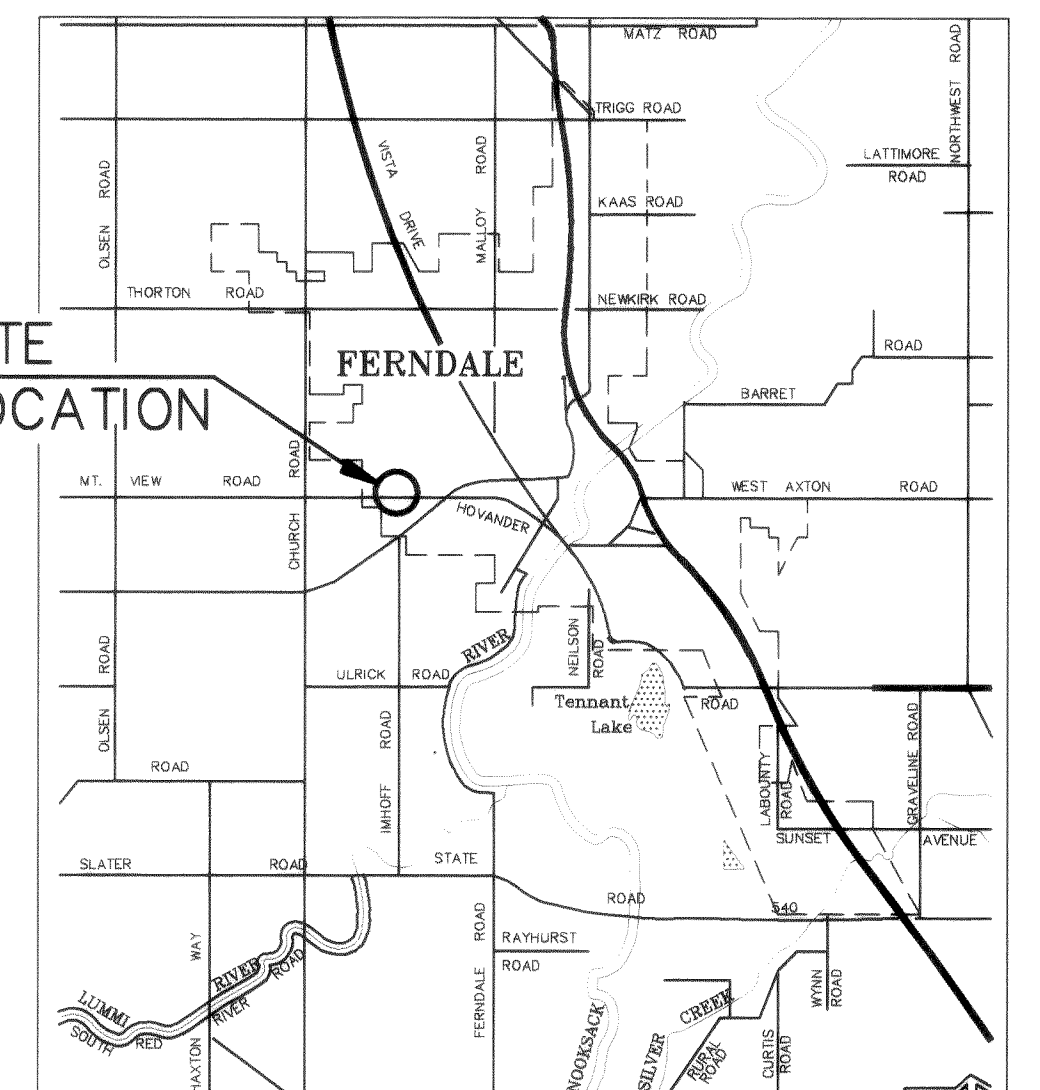
MOUNTAIN VIEW ROAD



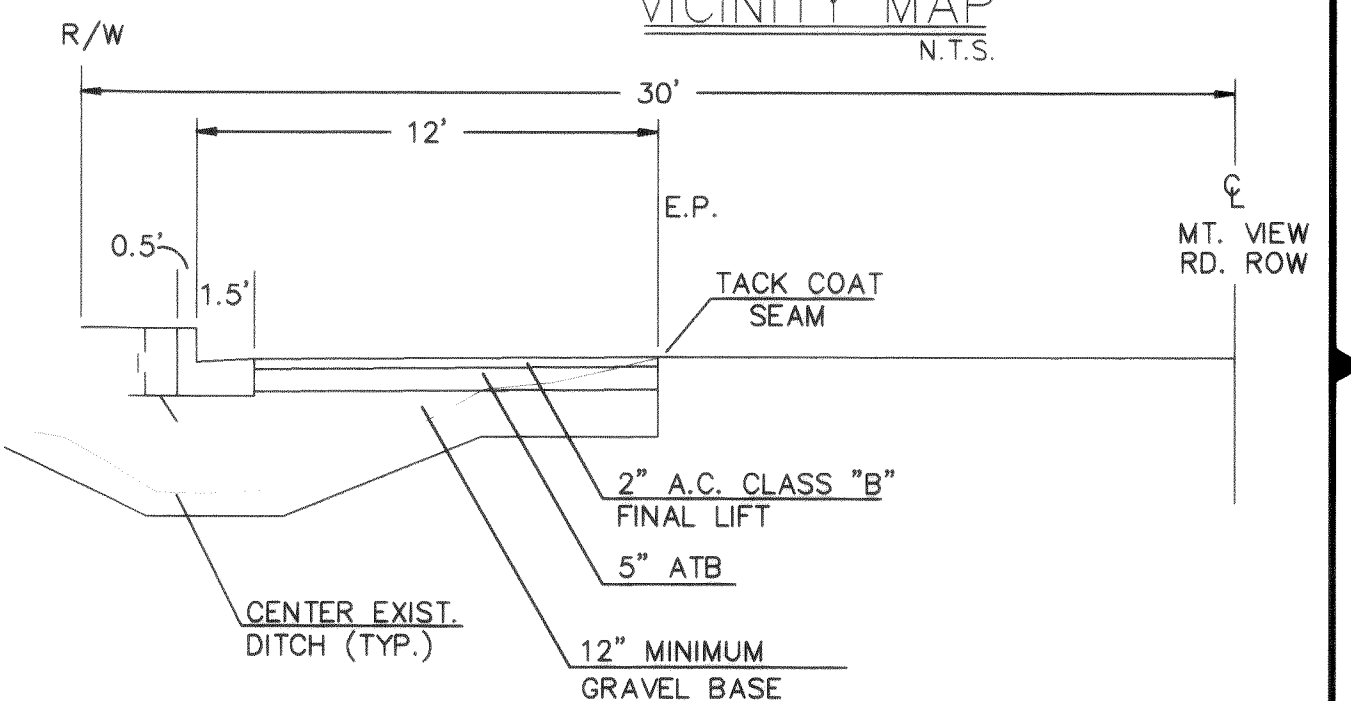
SCALE: 1" = 20'

SECTION LOCATION
SECTION 19

SITE
LOCATION



VICINITY MAP
N.T.S.



REMOVE UNSUITABLE FOUNDATION MATERIAL IN ROAD SECTION & REPLACE w/ GRAVEL BASE OR EQUAL.

NOTE:
ALL ITEMS FOR ROADWAY WIDENING SHALL BE INSTALLED PER THE CITY OF FERNDALE STANDARDS AND THE STANDARD SPECIFICATIONS.

SECTION B-B / ROADWAY WIDENING

GENERAL NOTES

- THE LOCATION OF EXISTING UTILITIES SHOWN IS APPROXIMATE. IT IS THE RESPONSIBILITY OF THE CONTRACTOR TO FIELD VERIFY THESE LOCATIONS PRIOR TO CONSTRUCTION.
- ALL WORK SHALL CONFORM TO THE STANDARD PLANS AND SPECIFICATIONS OF THE WASHINGTON STATE DEPARTMENT OF TRANSPORTATION (WSDOT), 1994, AND CITY OF FERNDALE STANDARDS UNLESS INDICATED OTHERWISE BY THE CONTRACT DOCUMENTS. IN CASE OF A CONFLICT BETWEEN THE REGULATORY STANDARDS OR SPECIFICATIONS, THE MORE STRINGENT REQUIREMENT WILL PREVAIL.
- UNDERGROUND UTILITIES ARE KNOWN TO EXIST IN THE AREA OF CONSTRUCTION. IT IS THE RESPONSIBILITY OF THE CONTRACTOR TO CONTACT THE UTILITY OWNERS FOR LOCATIONS AND TO NOTIFY THE ENGINEER PROMPTLY OF ANY CONFLICT.
- THE CONTRACTOR SHALL BE RESPONSIBLE FOR MAINTAINING THE INTEGRITY OF ADJACENT UTILITIES WHICH INCLUDE, BUT ARE NOT LIMITED TO, WATER, SEWER, STORM SEWER, POWER, TELEPHONE, CABLE TV, IRRIGATION, AND STREET LIGHTING.
- THE CONTRACTOR SHALL BE RESPONSIBLE FOR MAINTAINING ALL EROSION CONTROL MEASURES THROUGHOUT THE DURATION OF THE PROJECT.

DATE
JUNE 95
SCALE
H: 1"=20'
JOB NO.
91036B
SHEET
1
OF
1

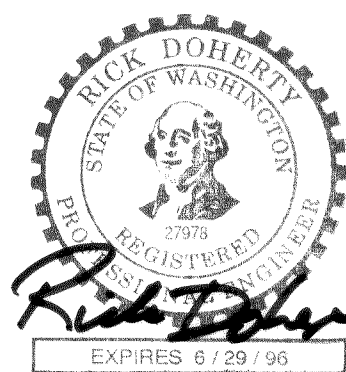
PROFILE SANITARY SEWER

SCALE: 1" = 20'H
1" = 5'V

RECORD DRAWING

FERNDAL WEST PUD
MOUNTAIN VIEW ROAD FRONTAGE IMPROVEMENTS
PLAN AND DETAILS

1911 "C" STREET
BELLINGHAM, WA 98225
PHONE: (360) 671-8200
COUNTY: (360) 354-3723
FAX: (360) 738-3367
Ayers Professional Group, Inc.



1-2-96

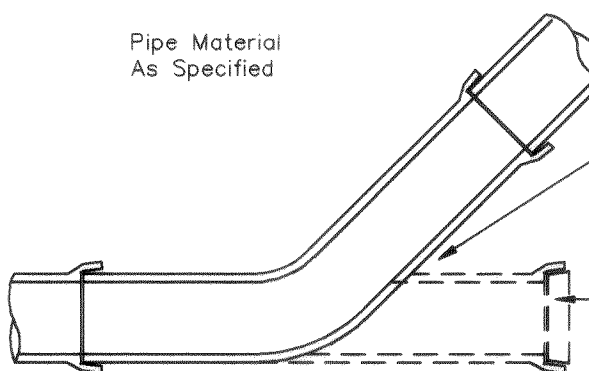
- NOTES:
- NATIVE BACKFILL SHALL BE COMPACTED TO 90% RELATIVE COMPACTION.
 - SELECT BACKFILL/CRUSHED SURFACE COURSE SHALL BE COMPACTED TO 92% COMPACTION.
 - PAVEMENT SHALL BE SAW CUT, TACKED, AND COMPACTED TO 92% OF ABSOLUTE DENSITY.
 - P.C.C. REPLACEMENT SHALL BE 2" GREATER THAN EXISTING COURSE. 7" MINIMUM, 6.5 P.C.C. (HES - AIR ENTRAINED)
 - ALL TRENCH RESTORATION SHALL MEET CITY OF FERNDALE.

TRENCHING DETAIL
N.T.S.

ASPHALT/CONCRETE PAVEMENT TRENCH
GRAVEL SHOULDER TRENCH
DITCH AND NON-DEVELOPED AREA TRENCH

NATIVE TOPSOIL DEPTH VARIES
NATIVE BACKFILL COMPACTED TO 90% RELATIVE COMPACTION IN DITCH, 95% RELATIVE COMPACTION IN SHOULDER & ROADWAY SECTION

8" CLEANOUT
N.T.S.



DO NOT SCALE

Plug To Be Sealed in Same Manner As Main Sewer Joints.

PLACE PIPE ON UNDISTURBED SOIL IN AREA BETWEEN BENDS

PIPE MATERIAL As Specified

MONUMENT RING AND COVER NOT ACCEPTABLE.

CAST IRON RING AND COVER

ROPE OFF SUFFICIENT DIAMETER TO SEAL JOINT IS O.K. (1"± CLEARANCE)

Fiber Joint Packing

1/8" Bend

4 3/4"

2"

10"

8 3/4"

5/8" 2 7/8"

1 1/2"

1"

3/4"

1/2"

1/8" Raise - Wide Border

3/4" Squares Spaced - 3/4" As Indicated - Ht. 1/8"

CLEAN-OUT LIDS WHICH INCORPORATE A "GRAB BAR" FOR EASY LID REMOVAL ARE NO LONGER ALLOWED. LIDS SIMILAR TO THE VIEW AT LEFT OR THEIR EQUIVALENT ARE TO BE USED.

NOT NECESSARY TO BOND COVER PIPE TO RING AT THIS POINT. BUTT TO RING AND ENCASE IN CONCRETE BLOCK.

1/2"

1"

1/2"

1/8" Raise - Wide Border

3/4" Squares Spaced - 3/4" As Indicated - Ht. 1/8"

CLEAN-OUT LIDS WHICH INCORPORATE A "GRAB BAR" FOR EASY LID REMOVAL ARE NO LONGER ALLOWED. LIDS SIMILAR TO THE VIEW AT LEFT OR THEIR EQUIVALENT ARE TO BE USED.

NOT NECESSARY TO BOND COVER PIPE TO RING AT THIS POINT. BUTT TO RING AND ENCASE IN CONCRETE BLOCK.

1/2"

1"

1/2"

1/8" Raise - Wide Border

3/4" Squares Spaced - 3/4" As Indicated - Ht. 1/8"

CLEAN-OUT LIDS WHICH INCORPORATE A "GRAB BAR" FOR EASY LID REMOVAL ARE NO LONGER ALLOWED. LIDS SIMILAR TO THE VIEW AT LEFT OR THEIR EQUIVALENT ARE TO BE USED.

NOT NECESSARY TO BOND COVER PIPE TO RING AT THIS POINT. BUTT TO RING AND ENCASE IN CONCRETE BLOCK.

1/2"

1"

1/2"

1/8" Raise - Wide Border

3/4" Squares Spaced - 3/4" As Indicated - Ht. 1/8"

CLEAN-OUT LIDS WHICH INCORPORATE A "GRAB BAR" FOR EASY LID REMOVAL ARE NO LONGER ALLOWED. LIDS SIMILAR TO THE VIEW AT LEFT OR THEIR EQUIVALENT ARE TO BE USED.

NOT NECESSARY TO BOND COVER PIPE TO RING AT THIS POINT. BUTT TO RING AND ENCASE IN CONCRETE BLOCK.

1/2"

1"

1/2"

1/8" Raise - Wide Border

3/4" Squares Spaced - 3/4" As Indicated - Ht. 1/8"

CLEAN-OUT LIDS WHICH INCORPORATE A "GRAB BAR" FOR EASY LID REMOVAL ARE NO LONGER ALLOWED. LIDS SIMILAR TO THE VIEW AT LEFT OR THEIR EQUIVALENT ARE TO BE USED.

NOT NECESSARY TO BOND COVER PIPE TO RING AT THIS POINT. BUTT TO RING AND ENCASE IN CONCRETE BLOCK.

1/2"

1"

1/2"

1/8" Raise - Wide Border

3/4" Squares Spaced - 3/4" As Indicated - Ht. 1/8"

CLEAN-OUT LIDS WHICH INCORPORATE A "GRAB BAR" FOR EASY LID REMOVAL ARE NO LONGER ALLOWED. LIDS SIMILAR TO THE VIEW AT LEFT OR THEIR EQUIVALENT ARE TO BE USED.

NOT NECESSARY TO BOND COVER PIPE TO RING AT THIS POINT. BUTT TO RING AND ENCASE IN CONCRETE BLOCK.

1/2"

1"

1/2"

1/8" Raise - Wide Border

3/4" Squares Spaced - 3/4" As Indicated - Ht. 1/8"

CLEAN-OUT LIDS WHICH INCORPORATE A "GRAB BAR" FOR EASY LID REMOVAL ARE NO LONGER ALLOWED. LIDS SIMILAR TO THE VIEW AT LEFT OR THEIR EQUIVALENT ARE TO BE USED.

NOT NECESSARY TO BOND COVER PIPE TO RING AT THIS POINT. BUTT TO RING AND ENCASE IN CONCRETE BLOCK.

1/2"

1"

1/2"

1/8" Raise - Wide Border

3/4" Squares Spaced - 3/4" As Indicated - Ht. 1/8"

CLEAN-OUT LIDS WHICH INCORPORATE A "GRAB BAR" FOR EASY LID REMOVAL ARE NO LONGER ALLOWED. LIDS SIMILAR TO THE VIEW AT LEFT OR THEIR EQUIVALENT ARE TO BE USED.

NOT NECESSARY TO BOND COVER PIPE TO RING AT THIS POINT. BUTT TO RING AND ENCASE IN CONCRETE BLOCK.

1/2"

1"

1/2"

1/8" Raise - Wide Border

3/4" Squares Spaced - 3/4" As Indicated - Ht. 1/8"

CLEAN-OUT LIDS WHICH INCORPORATE A "GRAB BAR" FOR EASY LID REMOVAL ARE NO LONGER ALLOWED. LIDS SIMILAR TO THE VIEW AT LEFT OR THEIR EQUIVALENT ARE TO BE USED.

NOT NECESSARY TO BOND COVER PIPE TO RING AT THIS POINT. BUTT TO RING AND ENCASE IN CONCRETE BLOCK.

1/2"

1"

1/2"

1/8" Raise - Wide Border

3/4" Squares Spaced - 3/4" As Indicated - Ht. 1/8"

CLEAN-OUT LIDS WHICH INCORPORATE A "GRAB BAR" FOR EASY LID REMOVAL ARE NO LONGER ALLOWED. LIDS SIMILAR TO THE VIEW AT LEFT OR THEIR EQUIVALENT ARE TO BE USED.

NOT NECESSARY TO BOND COVER PIPE TO RING AT THIS POINT. BUTT TO RING AND ENCASE IN CONCRETE BLOCK.

1/2"

1"

1/2"

1/8" Raise - Wide Border

3/4" Squares Spaced - 3/4" As Indicated - Ht. 1/8"

CLEAN-OUT LIDS WHICH INCORPORATE A "GRAB BAR" FOR EASY LID REMOVAL ARE NO LONGER ALLOWED. LIDS SIMILAR TO THE VIEW AT LEFT OR THEIR EQUIVALENT ARE TO BE USED.

NOT NECESSARY TO BOND COVER PIPE TO RING AT THIS POINT. BUTT TO RING AND ENCASE IN CONCRETE BLOCK.

1/2"

1"

1/2"

1/8" Raise - Wide Border

3/4" Squares Spaced - 3/4" As Indicated - Ht. 1/8"

CLEAN-OUT LIDS WHICH INCORPORATE A "GRAB BAR" FOR EASY LID REMOVAL ARE NO LONGER ALLOWED. LIDS SIMILAR TO THE VIEW AT LEFT OR THEIR EQUIVALENT ARE TO BE USED.

NOT NECESSARY TO BOND COVER PIPE TO RING AT THIS POINT. BUTT TO RING AND ENCASE IN CONCRETE BLOCK.

1/2"

1"

1/2"

1/8" Raise - Wide Border

3/4" Squares Spaced - 3/4" As Indicated - Ht. 1/8"

CLEAN-OUT LIDS WHICH INCORPORATE A "GRAB BAR" FOR EASY LID REMOVAL ARE NO LONGER ALLOWED. LIDS SIMILAR TO THE VIEW AT LEFT OR THEIR EQUIVALENT ARE TO BE USED.

NOT NECESSARY TO BOND COVER PIPE TO RING AT THIS POINT. BUTT TO RING AND ENCASE IN CONCRETE BLOCK.

1/2"

1"

1/2"

1/8" Raise - Wide Border

3/4" Squares Spaced - 3/4" As Indicated - Ht. 1/8"

CLEAN-OUT LIDS WHICH INCORPORATE A "GRAB BAR" FOR EASY LID REMOVAL ARE NO LONGER ALLOWED. LIDS SIMILAR TO THE VIEW AT LEFT OR THEIR EQUIVALENT ARE TO BE USED.

NOT NECESSARY TO BOND COVER PIPE TO RING AT THIS POINT. BUTT TO RING AND ENCASE IN CONCRETE BLOCK.

1/2"

1"

1/2"

1/8" Raise - Wide Border

3/4" Squares Spaced - 3/4" As Indicated - Ht. 1/8"

CLEAN-OUT LIDS WHICH INCORPORATE A "GRAB BAR" FOR EASY LID REMOVAL ARE NO LONGER ALLOWED. LIDS SIMILAR TO THE VIEW AT LEFT OR THEIR EQUIVALENT ARE TO BE USED.

NOT NECESSARY TO BOND COVER PIPE TO RING AT THIS POINT. BUTT TO RING AND ENCASE IN CONCRETE BLOCK.

1/2"

1"

1/2"

1/8" Raise - Wide Border

3/4" Squares Spaced - 3/4" As Indicated - Ht. 1/8"

CLEAN-OUT LIDS WHICH INCORPORATE A "GRAB BAR" FOR EASY LID REMOVAL ARE NO LONGER ALLOWED. LIDS SIMILAR TO THE VIEW AT LEFT OR THEIR EQUIVALENT ARE TO BE USED.

NOT NECESSARY TO BOND COVER PIPE TO RING AT THIS POINT. BUTT TO RING AND ENCASE IN CONCRETE BLOCK.

1/2"

1"

1/2"

1/8" Raise - Wide Border

3/4" Squares Spaced - 3/4" As Indicated - Ht. 1/8"

CLEAN-OUT LIDS WHICH INCORPORATE A "GRAB BAR" FOR EASY LID REMOVAL ARE NO LONGER ALLOWED. LIDS SIMILAR TO THE VIEW AT LEFT OR THEIR EQUIVALENT ARE TO BE USED.

NOT NECESSARY TO BOND COVER PIPE TO RING AT THIS POINT. BUTT TO RING AND ENCASE IN CONCRETE BLOCK.

1/2"

1"

1/2"

1/8" Raise - Wide Border

3/4" Squares Spaced - 3/4" As Indicated - Ht. 1/8"

CLEAN-OUT LIDS WHICH INCORPORATE A "GRAB BAR" FOR EASY LID REMOVAL ARE NO LONGER ALLOWED. LIDS SIMILAR TO THE VIEW AT LEFT OR THEIR EQUIVALENT ARE TO BE USED.

NOT NECESSARY TO BOND COVER PIPE TO RING AT THIS POINT. BUTT TO RING AND ENCASE IN CONCRETE BLOCK.

1/2"

1"

1/2"

1/8" Raise - Wide Border

3/4" Squares Spaced - 3/4" As Indicated - Ht. 1/8"

CLEAN-OUT LIDS WHICH INCORPORATE A "GRAB BAR" FOR EASY LID REMOVAL ARE NO LONGER ALLOWED. LIDS SIMILAR TO THE VIEW AT LEFT OR THEIR EQUIVALENT ARE TO BE USED.

NOT NECESSARY TO BOND COVER PIPE TO RING AT THIS POINT. BUTT TO RING AND ENCASE IN CONCRETE BLOCK.

1/2"

1"

1/2"

1/8" Raise - Wide Border

3/4" Squares Spaced - 3/4" As Indicated - Ht. 1/8"

CLEAN-OUT LIDS WHICH INCORPORATE A "GRAB BAR" FOR EASY LID REMOVAL ARE NO LONGER ALLOWED. LIDS SIMILAR TO THE VIEW AT LEFT OR THEIR EQUIVALENT ARE TO BE USED.

NOT NECESSARY TO BOND COVER PIPE TO RING AT THIS POINT. BUTT TO RING AND ENCASE IN CONCRETE BLOCK.

1/2"

1"

1/2"

1/8" Raise - Wide Border

3/4" Squares Spaced - 3/4" As Indicated - Ht. 1/8"

CLEAN-OUT LIDS WHICH INCORPORATE A "GRAB BAR" FOR EASY LID REMOVAL ARE NO LONGER ALLOWED. LIDS SIMILAR TO THE VIEW AT LEFT OR THEIR EQUIVALENT ARE TO BE USED.

NOT NECESSARY TO BOND COVER PIPE TO RING AT THIS POINT. BUTT TO RING AND ENCASE IN CONCRETE BLOCK.

1/2"

1"

1/2"

1/8" Raise - Wide Border

3/4" Squares Spaced - 3/4" As Indicated - Ht. 1/8"

CLEAN-OUT LIDS WHICH INCORPORATE A "GRAB BAR" FOR EASY LID REMOVAL ARE NO LONGER ALLOWED. LIDS SIMILAR TO THE VIEW AT LEFT OR THEIR EQUIVALENT ARE TO BE USED.

NOT NECESSARY TO BOND COVER PIPE TO RING AT THIS POINT. BUTT TO RING AND ENCASE IN CONCRETE BLOCK.

1/2"

1"

1/2"

1/8" Raise - Wide Border

3/4" Squares Spaced - 3/4" As Indicated - Ht. 1/8"

CLEAN-OUT LIDS WHICH INCORPORATE A "GRAB BAR" FOR EASY LID REMOVAL ARE NO LONGER ALLOWED. LIDS SIMILAR TO THE VIEW AT LEFT OR THEIR EQUIVALENT ARE TO BE USED.

NOT NECESSARY TO BOND COVER PIPE TO RING AT THIS POINT. BUTT TO RING AND ENCASE IN CONCRETE BLOCK.

1/2"

1"

1/2"

1/8" Raise - Wide Border

3/4" Squares Spaced - 3/4" As Indicated - Ht. 1/8"

CLEAN-OUT LIDS WHICH INCORPORATE A "GRAB BAR" FOR EASY LID REMOVAL ARE NO LONGER ALLOWED. LIDS SIMILAR TO THE VIEW AT LEFT OR THEIR EQUIVALENT ARE TO BE USED.

NOT NECESSARY TO BOND COVER PIPE TO RING AT THIS POINT. BUTT TO RING AND ENCASE IN CONCRETE BLOCK.

1/2"

1"

1/2"

1/8" Raise - Wide Border

3/4" Squares Spaced - 3/4" As Indicated - Ht. 1/8"

CLEAN-OUT LIDS WHICH INCORPORATE A "GRAB BAR" FOR EASY LID REMOVAL ARE NO LONGER ALLOWED. LIDS SIMILAR TO THE VIEW AT LEFT OR THEIR EQUIVALENT ARE TO BE USED.

NOT NECESSARY TO BOND COVER PIPE TO RING AT THIS POINT. BUTT TO RING AND ENCASE IN CONCRETE BLOCK.

1/2"

1"

1/2"

1/8" Raise - Wide Border

3/4" Squares Spaced - 3/4" As Indicated - Ht. 1/8"

CLEAN-OUT LIDS WHICH INCORPORATE A "GRAB BAR" FOR EASY LID REMOVAL ARE NO LONGER ALLOWED. LIDS SIMILAR TO THE VIEW AT LEFT OR THEIR EQUIVALENT ARE TO BE USED.

NOT NECESSARY TO BOND COVER PIPE TO RING AT THIS POINT. BUTT TO RING AND ENCASE IN CONCRETE BLOCK.

1/2"

1"

1/2"

1/8" Raise - Wide Border

3/4" Squares Spaced - 3/4" As Indicated - Ht. 1/8"

CLEAN-OUT LIDS WHICH INCORPORATE A "GRAB BAR" FOR EASY LID REMOVAL ARE NO LONGER ALLOWED. LIDS SIMILAR TO THE VIEW AT LEFT OR THEIR EQUIVALENT ARE TO BE USED.

NOT NECESSARY TO BOND COVER PIPE TO RING AT THIS POINT. BUTT TO RING AND ENCASE IN CONCRETE BLOCK.

1/2"

1"

1/2"

1/8" Raise - Wide Border

3/4" Squares Spaced - 3/4" As Indicated - Ht. 1/8"

CLEAN-OUT LIDS WHICH INCORPORATE A "GRAB BAR" FOR EASY LID REMOVAL ARE NO LONGER ALLOWED. LIDS SIMILAR TO THE VIEW AT LEFT OR THEIR EQUIVALENT ARE TO BE USED.

NOT NECESSARY TO BOND COVER PIPE TO RING AT THIS POINT. BUTT TO RING AND ENCASE IN CONCRETE BLOCK.

1/2"