

PLAT OF ARIEL COURT

SITUATE IN A PORTION OF THE NW 1/4, NE 1/4 OF SECTION 30, T. 39 N., R. 2EW., W.M.
CITY OF FERNDALE, WHATCOM COUNTY, WASHINGTON

002601.001 1:28.08 42

LEGEND

- FND BRASS MON
- FND ALUMINUM CAP MON
- FND CONC MON
- FND SQUARE CONC MON
- FND REBAR AND CAP
- SET 1/2" REBAR W/PLAS. CAP PLS#TTTTT
- FND IRON PIPE
- FND HUB AND TACK
- FND PK NAIL
- FND PK NAIL AND TAG/SHINER
- FND RR SPIKE
- RECORD DATA PER DEED
- RECORD DATA PER PLAT
- EXIST SD CATCH BASIN (TYPE 1)
- EXIST SD CATCH BASIN (TYPE 2)
- EXISTING SD MANHOLE (TYPE 1) (SOLID TOP)
- EXISTING SD MANHOLE (TYPE 2) (SOLID TOP)
- EXIST SD INLET
- EXIST SD AREA DRAIN
- EXIST SD CLEANOUT
- EXIST SD WIER
- EXIST SD SERVICE
- PROPOSED STORM DRAIN SERVICE
- PROPOSED STORM DRAIN CLEANOUT
- PROPOSED STORM DRAIN CATCH BASIN
- PROPOSED STORM DRAIN MANHOLE (TYPE 2)
- EXIST SANITARY SEWER MANHOLE
- EXIST SANITARY SEWER CLEANOUT
- EXIST SANITARY SEWER SERVICE
- PROPOSED SANITARY SEWER SERVICE
- PROPOSED SEWER CLEANOUT
- PROPOSED SEWER MANHOLE
- EXISTING WATER SERVICE CONNECT
- EXISTING FIRE STAND PIPE
- EXISTING FIRE HOSE CONNECTION
- EXISTING WATER BLOW-OFF VALVE
- EXISTING WATER METER BOX
- EXISTING WATER VALVE
- EXISTING FIRE HYDRANT
- EXIST WATER VALVE BOXES
- PROPOSED WATER SERVICE
- PROPOSED WATER VALVE
- PROPOSED FIRE HYDRANT
- PROPOSED COUPLING ADAPTOR
- PROPOSED REDUCER
- PROPOSED BLOW-OFF ASSEMBLY
- PROPOSED BEND
- EXIST POWER/AND OR UTILITY POLE
- EXIST GUY POLE
- EXIST GUY WIRE
- EXIST POWER METER/STRUCTURE
- EXIST POWER VAULT
- EXIST POWER JBOX/HANDHOLD
- EXIST LIGHT POLE
- EXIST UTILITY POLE
- EXIST TV BOX
- EXIST TELEPHONE PEDESTAL
- EXIST TELEPHONE MANHOLE
- EXIST MAIL BOX
- EXIST SIGN
- PROPOSED SIGN
- EXIST LANDSCAPING
- EXIST GAS METER
- EXIST OVERHEAD POWER
- EXIST UNDERGROUND POWER
- EXIST OVERHEAD PHONE
- EXIST UNDERGROUND PHONE
- EXIST OVERHEAD UTILITIES (UNKNOWN)
- EXIST UNDERGROUND TV CABLE
- EXIST GAS MAIN
- EXIST WATER LINE
- EXIST SANITARY SEWER LINE
- EXIST STORM DRAIN LINE
- PROPOSED STORM DRAIN LINE
- PROPOSED ROOF DRAIN
- PROPOSED SAN. SEWER LINE
- PROPOSED WATER LINE
- PROPOSED GAS LINE
- PROPOSED POWER LINE
- EXIST CHAIN LINK FENCE
- PROPOSED CHAIN LINK FENCE
- EXIST BARBED WIRE FENCE
- PROPOSED BARBED WIRE FENCE
- EXIST WOOD POST FENCE
- PROPOSED WOOD POST FENCE
- EXIST FENCE TYPE:
- EXIST FENCE TYPE:
- EXIST CONTOUR (INDEX)
- EXIST CONTOUR (NORMAL)
- PROPOSED SPOT ELEV @ TOP OF SIDEWALK
- PROPOSED SPOT ELEV @ TOP OF PAVEMENT
- PROPOSED SPOT ELEV @ TOP OF CURB
- PROPOSED SPOT ELEV @ TOP OF FINISHED GRADE
- EXIST SPOT ELEV @ TOP OF PAVEMENT
- EXIST SPOT ELEV @ EDGE OF PAVEMENT
- EXIST SPOT ELEV @ EDGE OF CONC WALK
- EXIST SPOT ELEV @ TOP OF GROUND
- EXIST SPOT ELEV @ FACE OF CURB
- EXIST SPOT ELEV @ TOP OF BOARDWALK
- EXIST SPOT ELEV @ TOP OF CONC WALK
- DETAIL CALLOUT

Asbuilt Drawing Certification

I HEREBY CERTIFY THAT THE IMPROVEMENTS IN PLAT OF ARIEL COURT HAVE BEEN INSPECTED BY FREELAND & ASSOCIATES, INC. AND CONSTRUCTED IN CONFORMANCE WITH THE PLANS APPROVED BY THE PUBLIC WORKS DIRECTOR FOR SAID DEVELOPMENT AND THE GENERAL SPECIFICATIONS ADOPTED BY THE CITY OF FERNDALE PUBLIC WORKS.

By: Neil A. Pl Date: 6-26-06

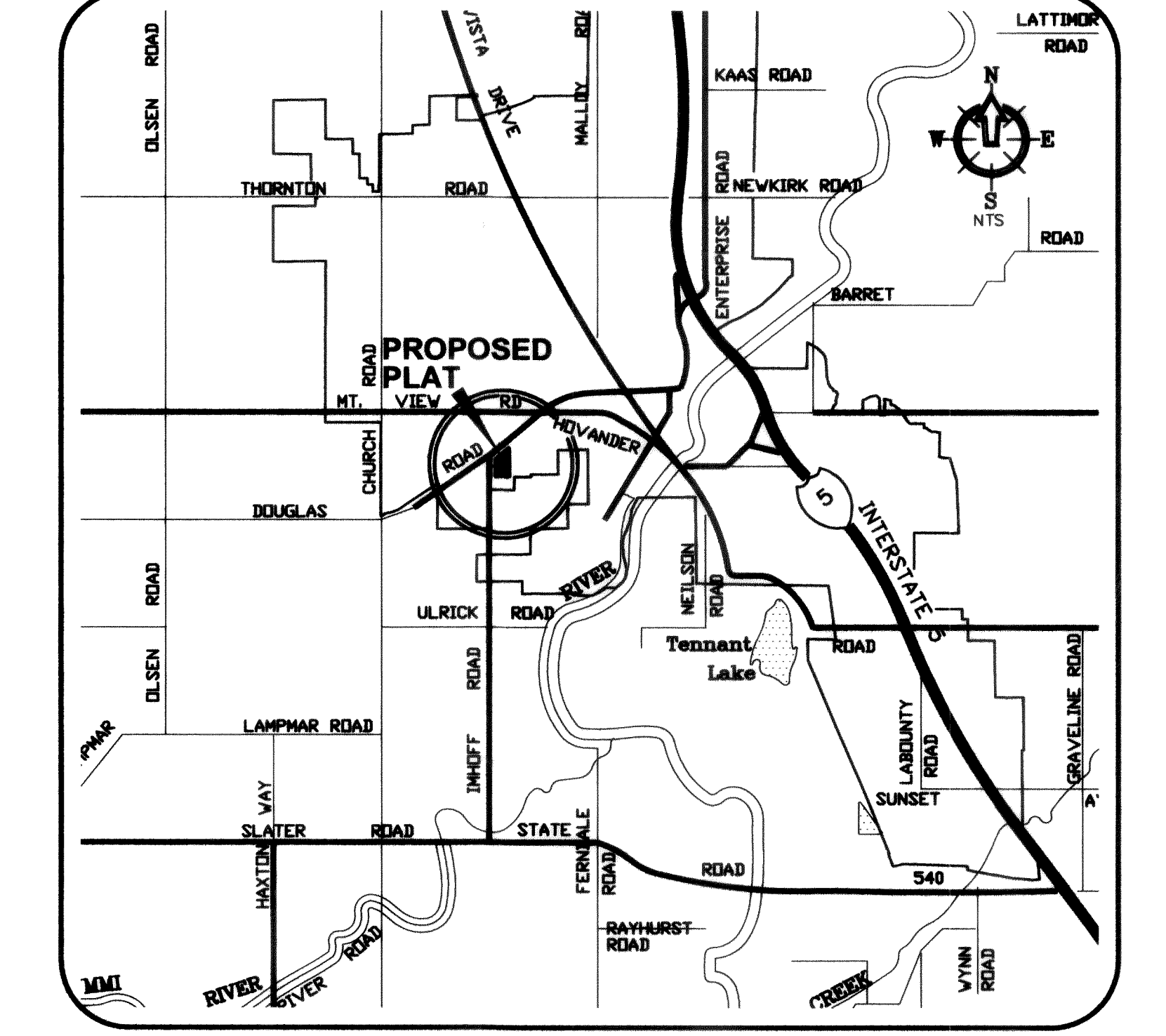
SHEET INDEX

- C1) COVER SHEET
- C2) EXISTING CONDITIONS
- C3) TEMPORARY EROSION & SEDIMENTATION CONTROL PLAN
- C4) OVERALL UTILITY PLAN
- C5) ROAD AND STORM PLAN & PROFILE
- C6) SANITARY SEWER PLAN & PROFILE
- C7) LOTS 14&15 STORMWATER & SIDE SEWER SERVICE PLAN
- C8) WATER DISTRIBUTION PLAN
- C9) STORMWATER POND PLAN
- C10) TESC DETAILS
- C11) ROAD DETAILS
- C12) STORM WATER DETAILS
- C13) SANITARY SEWER LIFT STATION
- C14) WATER DETAILS
- C15) GENERAL NOTES

ABBREVIATIONS

WL	= WATER LINE	IE	= INVERT ELEVATION
PVC	= POLY VINYL CHLORIDE	INV	= INVERT
D.I.	= DUCTILE IRON	SSCO	= SANITARY SEWER CLEANOUT
LF	= LINEAR FEET	SSMH	= SANITARY SEWER MANHOLE
FH	= FIRE HYDRANT	EG	= EXISTING GRADE
MJ	= MECHANICAL JOINT	STA	= STATION
FL	= FLANGE	AF NO.	= AUDITORS FILE NUMBER
BO	= BLOWOFF ASSEMBLY	ALIGN	= ALIGNMENT
CPLG	= COUPLING	RW/ R/W	= RIGHT OF WAY
ADAPT	= ADAPTER	TR	= TRACT EASEMENT LINE
LT	= LEFT	MB	= MAIL BOX
RT	= RIGHT	UTIL	= UTILITY
TYP	= TYPICAL	REQ	= REQUIRED
EX, EXST	= EXISTING	LOC	= LOCATION
EXIST	= EXISTING	APPROX	= APPROXIMATE
CL	= CENTERLINE	CONC	= CONCRETE
FF, FFE	= FINISH FLOOR ELEVATION	PLNTR	= PLANTER
EP, EOP	= EDGE OF PAVING	WLK	= WALKWAY
EL, ELEV	= ELEVATION	FLD	= FIELD
R	= RADIUS	PC	= POINT OF CURVE
FG	= FINISHED GRADE	PT	= POINT OF TANGENCY
FGE	= FINISHED GRADE ELEVATION	TP	= TOP OF PAVEMENT
TBC	= TOP BACK OF CURB	HP	= HIGH POINT

VICINITY MAP



PROJECT INFORMATION

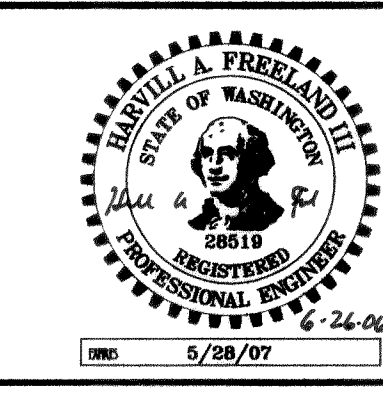
OWNER
ARIEL COURT DEVELOPMENT, INC.
MARK K. YOUNG
11 BELLWETHER WAY, SUITE 211
BELLINGHAM, WA 98225
(360) 961-2334

CIVIL ENGINEER
FREELAND & ASSOCIATES, INC.
TONY FREELAND, PE
J.P. SLAGLE, EIT
1408 NORTH GARDEN STREET
BELLINGHAM, WA 98225
(360) 650-1408
(360) 650-1401 {FAX}

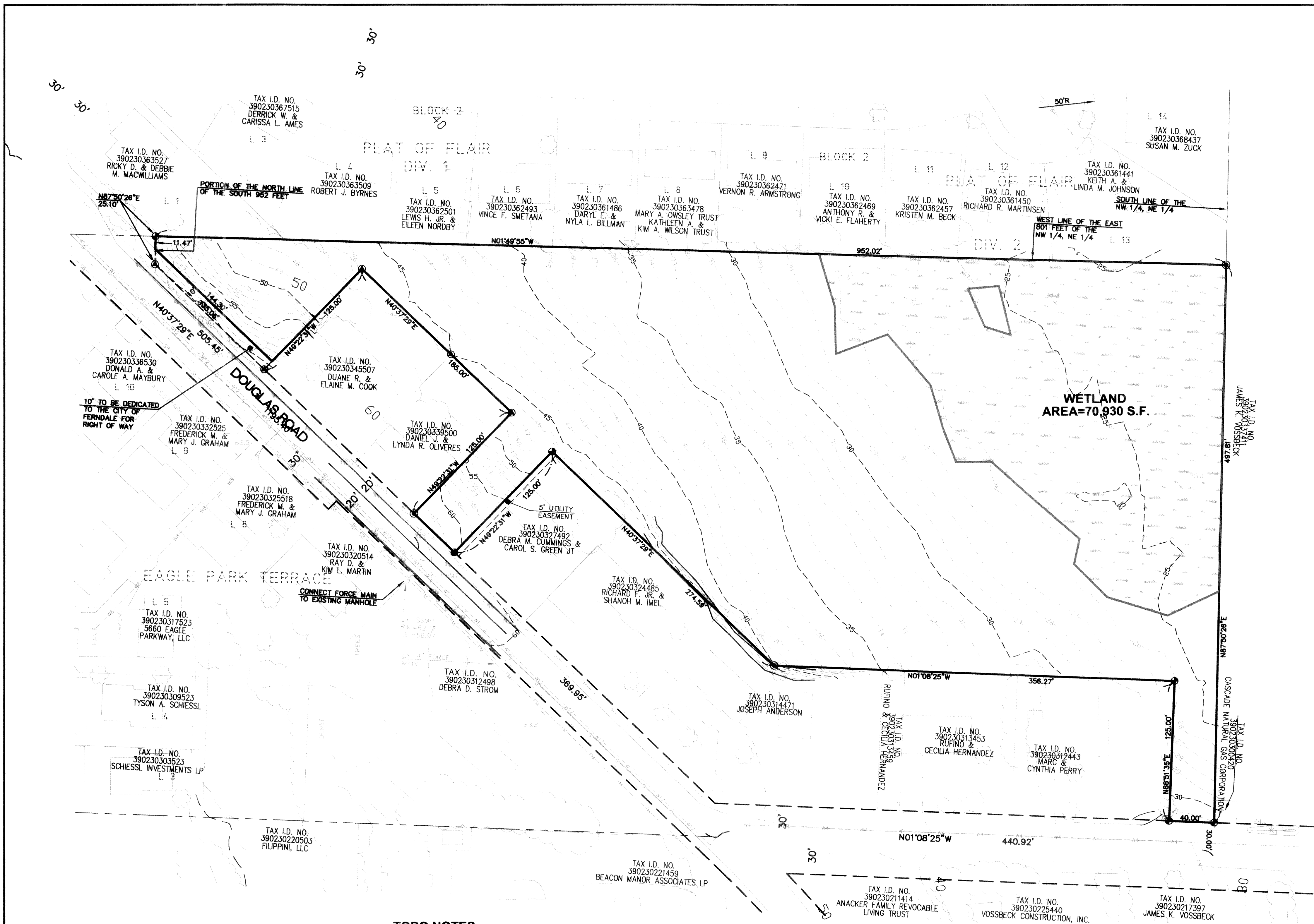
SURVEYOR
BAYVIEW SURVEYING, INC.
RICK HOLT, PLS
130 SHARON AVENUE
BURLINGTON, WA 98233
(360) 707-2580
(360) 757-3976 {FAX}

APPROVED
BY: DEC 26 2006
CITY OF FERNDALE

CALL BEFORE YOU DIG
FOR BURIED UTILITY LOCATIONS
1-800-424-5555

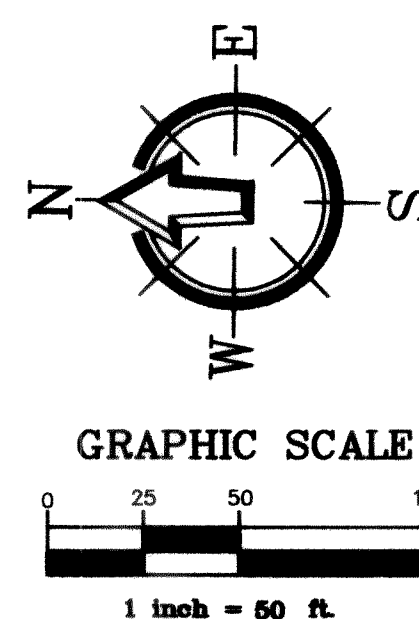


1408 North Garden Street
Bellingham, WA 98225
t: 360.650.1408
f: 360.650.1401
DATE: 5-10-06
JOB #: 04031
SHEET: C1 of 15
FREELAND & ASSOCIATES



LEGEND:

- FND BRASS MON
- ⊙ FND ALUMINUM CAP MON
- ⊙ FND CONC MON
- ⊙ FND SQUARE CONC MON
- ⊙ FND REBAR AND CAP
- SET 1/2" REBAR W/PLAS. CAP PLS#
- FND IRON PIPE
- SET HUB AND TACK
- ▲ FND PK NAIL
- FND PK NAIL AND TAG/SHINER
- FND RR SPIKE
- PLAT DISTANCE
- EXIST SD CATCH BASIN (TYPE 1)
- EXIST SD CATCH BASIN (TYPE 2)
- EXISTING SD MANHOLE (TYPE 1) (SOLID TOP)
- EXISTING SD MANHOLE (TYPE 2) (SOLID TOP)
- EXIST SD INLET
- EXIST SD AREA DRAIN
- EXIST SANITARY SEWER MANHOLE
- EXIST SANITARY SEWER CLEANOUT
- EXIST SANITARY SEWER SERVICE
- EXISTING WATER METER BOX
- EXISTING WATER VALVE
- EXISTING FIRE HYDRANT
- EXIST WATER VALVE BOX
- EXIST POWER/AND OR UTILITY POLE
- EXIST GUY POLE
- EXIST GUY WIRE
- EXIST POWER METER/STRUCTURE
- EXIST POWER VAULT
- EXIST POWER JBOX/HANDHOLD
- EXIST LIGHT POLE
- EXIST UTILITY POLE
- EXIST TV BOX
- EXIST TELEPHONE PEDESTAL
- EXIST TELEPHONE MANHOLE
- EXIST MAIL BOX
- EXIST SIGN
- EXIST FLAG POLE
- EXIST LANDSCAPING
- EXIST GAS METER
- EXIST OVERHEAD POWER
- EXIST UNDERGROUND POWER
- EXIST OVERHEAD PHONE
- EXIST UNDERGROUND PHONE
- EXIST OVERHEAD UTILITIES (UNKNOWN)
- EXIST UNDERGROUND TV CABLE
- EXIST GAS MAIN
- EXIST WATER LINE
- EXIST WATER LINE
- EXIST SANITARY SEWER LINE
- EXIST SANITARY SEWER LINE
- EXIST STORM DRAIN LINE
- EXIST STORM DRAIN LINE
- EXIST CHAIN LINK FENCE
- EXIST BARBED WIRE FENCE
- EXIST WOOD POST FENCE
- EXIST FENCE TYPE:
- EXIST FENCE TYPE:
- EXIST CONC. FENCE OR RET. WALL
- EXIST CONTOUR (INDEX)
- EXIST CONTOUR (NORMAL)



TOPO NOTES:

- FOR THIS SURVEY DATA WAS GATHERED BY FIELD TRAVERSE UTILIZING ELECTRONIC DATA COLLECTION.
- THIS IS NOT A BOUNDARY SURVEY.
- EQUIPMENT USED: TRIMBLE 5603 A EDM: ± 2 PPM, ± 2 MM
- HORIZONTAL DATUM: CITY OF FERDALE BASIS OF BEARINGS: SOUTH LINE OF SECTION 7, TOWNSHIP 38N, RANGE 3 EAST, W.M. BETWEEN THE MONUMENTS FOUND AT THE SW CORNER AND SOUTH QUARTER OF SAID SECTION. AS SHOWN ON THE RECORD OF SURVEY FILED UNDER AUDITOR'S FILE NUMBER 930210141. BEARING: N87°34'51"W
- VERTICAL DATUM: VERTICAL CONTROL WAS BASED FROM FIELD TIES TO CITY OF FERDALE MONUMENT NUMBER 7 PROJECT BENCHMARK: PK NAIL LOCATED ON THE WEST SIDE OF DOUGLAS ROAD ACROSS FROM THE SUBJECT PROPERTY SET AT THE TOP BACK OF CURB. ELEVATION= 187.84'
- FREELAND & ASSOCIATES, ASSUMES NO LIABILITY FOR ANY SUBSURFACE CONDITIONS OR FEATURES THAT MAY EXIST THAT ARE NOT DETECTABLE AND/OR NOT VISIBLE.
- THIS TOPOGRAPHY MAP WAS DONE WITHOUT THE BENEFIT OF A CURRENT TITLE REPORT. FREELAND & ASSOCIATES IS NOT RESPONSIBLE FOR ANY EASEMENTS, COVENANTS, RESERVATIONS AND RESTRICTIONS NOT SHOWN HEREON, THAT MAY EXIST.
- CONTOUR INTERVAL IS 1 FOOT AND ARE COMPUTER GENERATED FROM FIELD TOPOGRAPHY GATHERED FOR THIS SURVEY UTILIZING ELECTRONIC DATA COLLECTION. CONTOUR INTERVAL SHOWN DOES NOT MEET NATIONAL MAPPING STANDARDS AND ARE SHOWN FOR GRAPHIC PURPOSES ONLY. ACTUAL CONTOUR ACCURACY IS 2'.

Asbuilt Drawing Certification

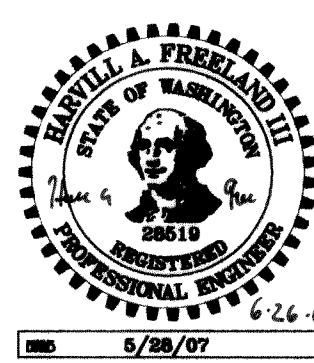
I HEREBY CERTIFY THAT THE IMPROVEMENTS IN PLAT OF ARIEL COURT HAVE BEEN INSPECTED BY FREELAND & ASSOCIATES, INC. AND CONSTRUCTED IN CONFORMANCE WITH THE PLANS APPROVED BY THE PUBLIC WORKS DIRECTOR FOR SAID DEVELOPMENT AND THE GENERAL SPECIFICATIONS ADOPTED BY THE CITY OF FERDALE PUBLIC WORKS.

By: Hea a Jel Date: 6-26-06

APPROVED

DEC 26 2006

By: KG CITY OF FERDALE



DESIGNED BY:

DRAWN BY:

CHECKED BY:



CLIENT:

ARIEL COURT DEVELOPMENT, LLC
11 BELLWEATHER WAY, SUITE 211
BELLINGHAM, WA 98225

PROJECT LOCATION:

2285 DOUGLAS ROAD
FERDALE, WA 98248

SHEET CONTENTS:

EXISTING CONDITIONS

DWG #:

0403171-ASB

DATE:

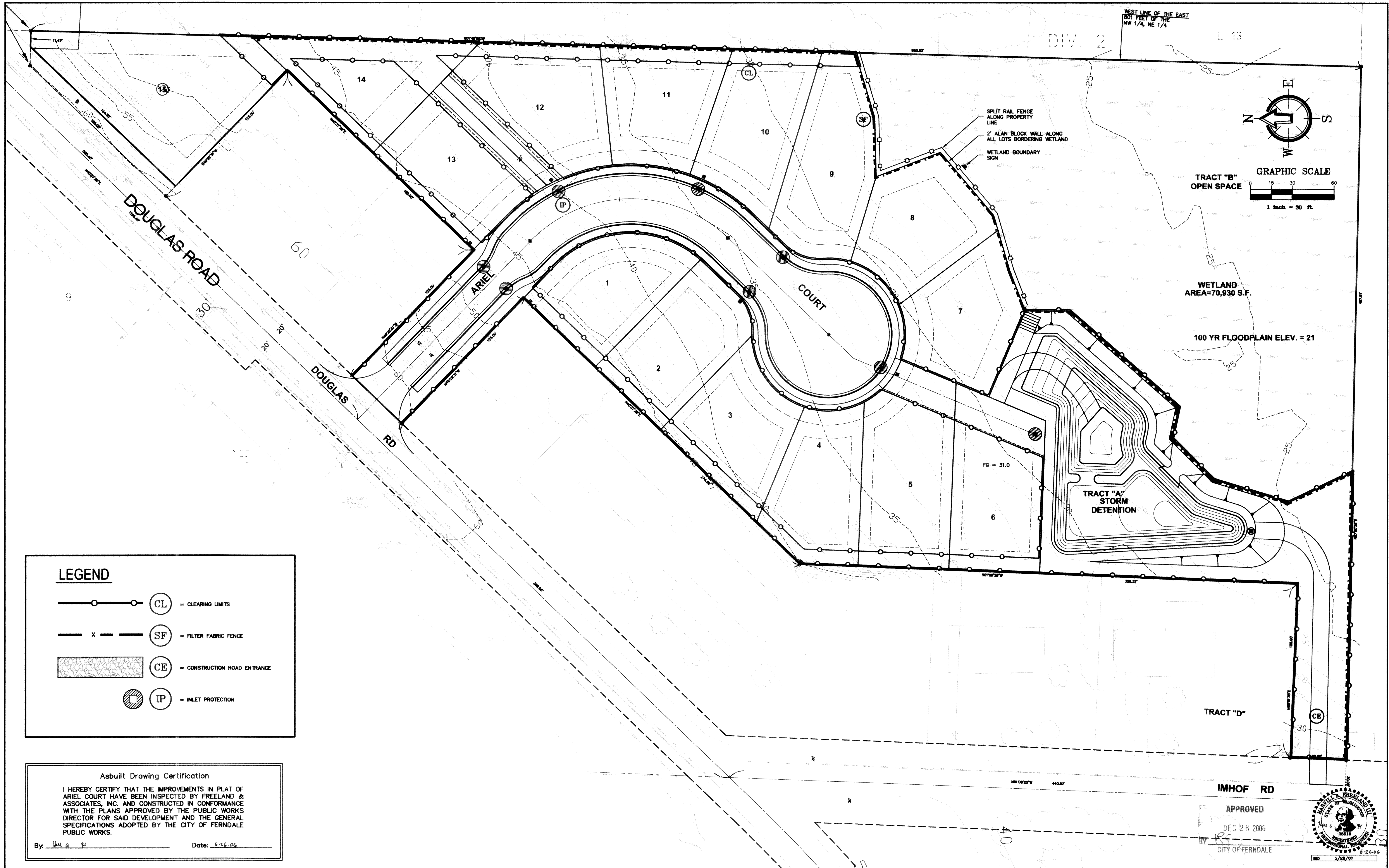
2-13-06

SCALE:

H: 1" = 50' V: n/a

SHEET:

C2 of 14



LEGEND

- CL - CLEARING LIMITS
- SF - FILTER FABRIC FENCE
- CE - CONSTRUCTION ROAD ENTRANCE
- IP - INLET PROTECTION

Asbuilt Drawing Certification

I HEREBY CERTIFY THAT THE IMPROVEMENTS IN PLAT OF ARIEL COURT HAVE BEEN INSPECTED BY FREELAND & ASSOCIATES, INC. AND CONSTRUCTED IN CONFORMANCE WITH THE PLANS APPROVED BY THE PUBLIC WORKS DIRECTOR FOR SAID DEVELOPMENT AND THE GENERAL SPECIFICATIONS ADOPTED BY THE CITY OF FERNDAL PUBLIC WORKS.

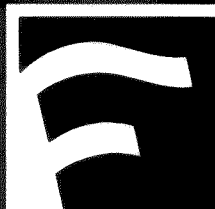
By: [Signature]

Date: 6-26-06

CALL BEFORE YOU DIG
FOR BURIED UTILITY LOCATIONS
1-800-424-5555

No.	Date	REVISION	By

DESIGNED BY:
JPS
DRAWN BY:
JPS
CHECKED BY:
HAF

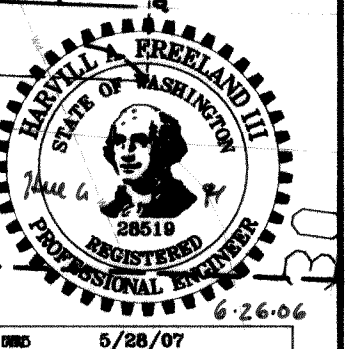


1408 North Garden Street
Bellingham, WA 98225
t: 360.650.1408
f: 360.650.1401
FREELAND & ASSOCIATES

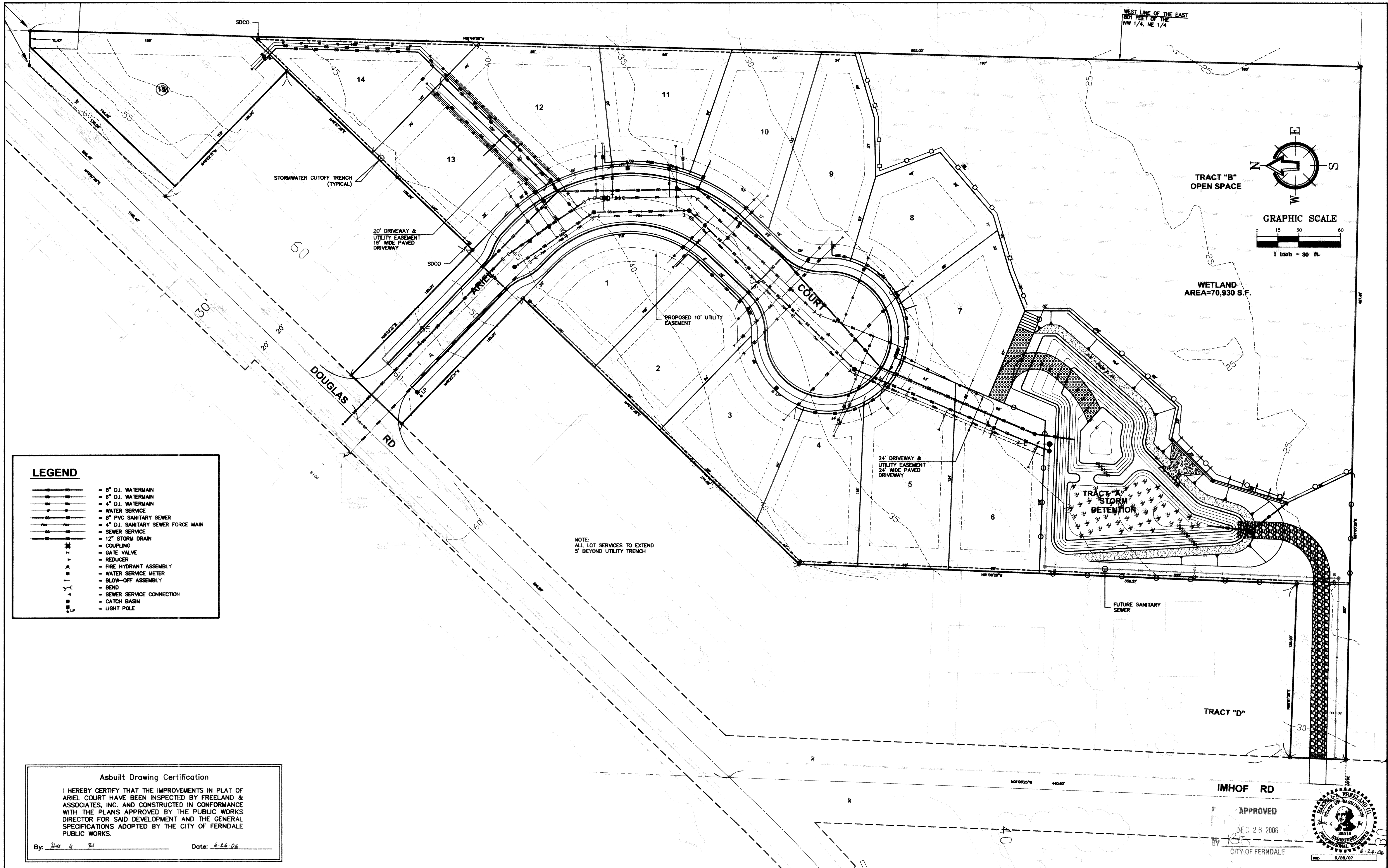
CLIENT: **ARIEL COURT DEVELOPMENT, INC**
11 BELLWETHER WAY, SUITE 211
BELLINGHAM, WA 98225
PROJECT LOCATION:
2285 DOUGLAS ROAD
FERNDAL, WA 98248

SHEET CONTENTS:
TEMPORARY EROSION & SEDIMENTATION CONTROL PLAN

DWG #: 04031ASB3
JOB #: 04031
SCALE: H: 1" = 30' V: n/a
DATE: 5-10-06
SHEET: **C3 of 15**



0036 000 1-28-06 42



LEGEND

- 8" D.I. WATERMAIN
- 12" D.I. WATERMAIN
- 4" D.I. WATERMAIN
- WATER SERVICE
- 8" PVC SANITARY SEWER
- 4" D.I. SANITARY SEWER FORCE MAIN
- SEWER SERVICE
- 12" STORM DRAIN
- COUPLING
- GATE VALVE
- REDUCER
- FIRE HYDRANT ASSEMBLY
- WATER SERVICE METER
- BLOW-OFF ASSEMBLY
- BEND
- SEWER SERVICE CONNECTION
- CATCH BASIN
- LIGHT POLE

Asbuilt Drawing Certification

I HEREBY CERTIFY THAT THE IMPROVEMENTS IN PLAT OF ARIEL COURT HAVE BEEN INSPECTED BY FREELAND & ASSOCIATES, INC. AND CONSTRUCTED IN CONFORMANCE WITH THE PLANS APPROVED BY THE PUBLIC WORKS DIRECTOR FOR SAID DEVELOPMENT AND THE GENERAL SPECIFICATIONS ADOPTED BY THE CITY OF FERNDAL PUBLIC WORKS.

By: [Signature] Date: 6-26-06

CALL BEFORE YOU DIG
FOR BURIED UTILITY LOCATIONS
1-800-424-5555

No.	Date	REVISION	By

DESIGNED BY:
JPS
DRAWN BY:
JPS
CHECKED BY:
HAF

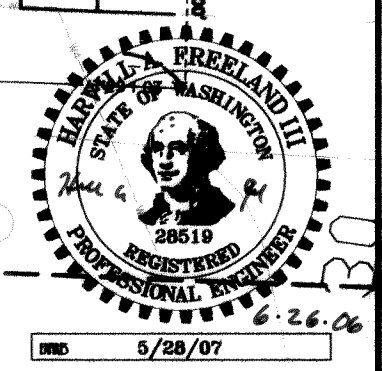
FREELAND & ASSOCIATES
1408 North Garden Street
Bellingham, WA 98225
T: 360.650.1408
F: 360.650.1401

CLIENT: **ARIEL COURT DEVELOPMENT, INC**
11 BELLWETHER WAY, SUITE 211
BELLINGHAM, WA 98225
PROJECT LOCATION:
2285 DOUGLAS ROAD
FERNDAL, WA 98248

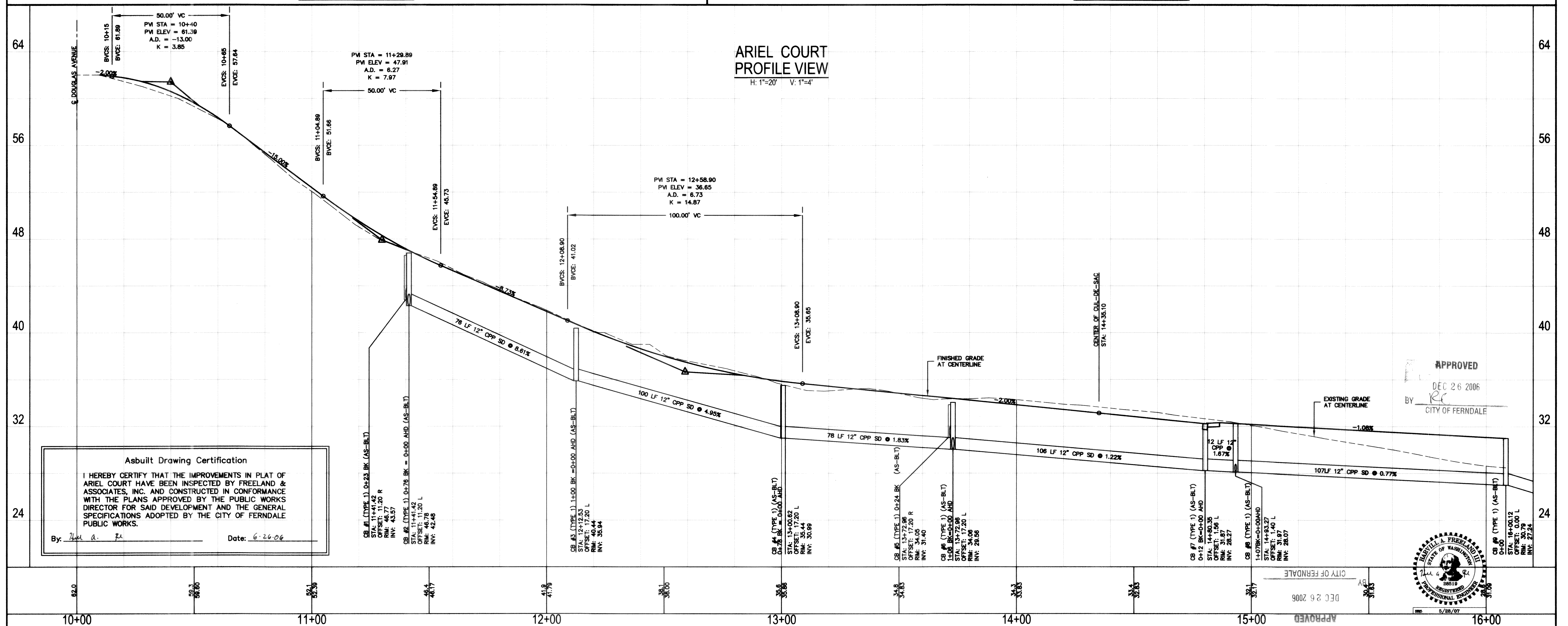
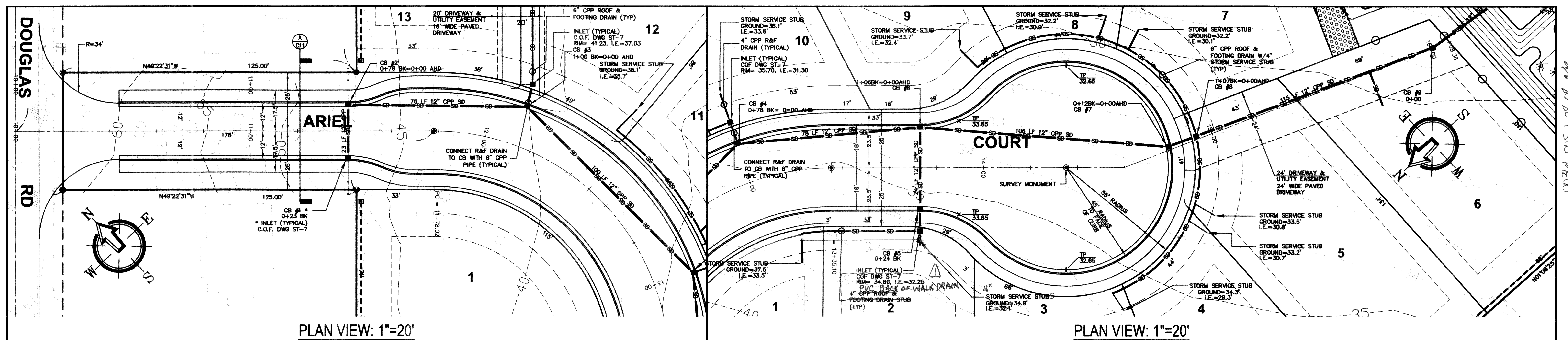
SHEET CONTENTS:
OVERALL UTILITY PLAN

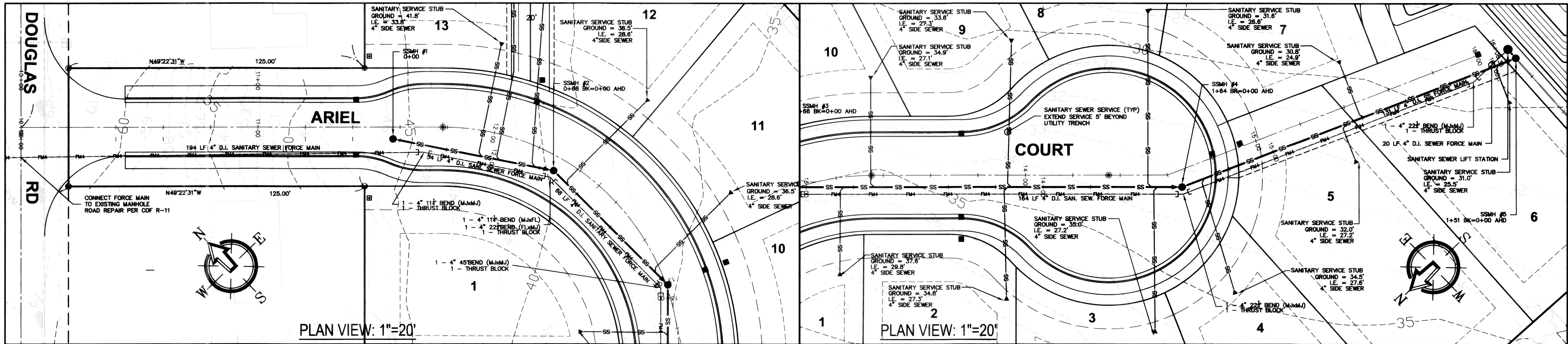
DWG #: 04031ASB3
JOB #: 04031
SCALE: H: 1" = 30' V: n/a
DATE: 5-10-06
SHEET: **C4 of 15**

APPROVED
DEC 26 2006
CITY OF FERNDAL



00361.004 1-28-08 KZ

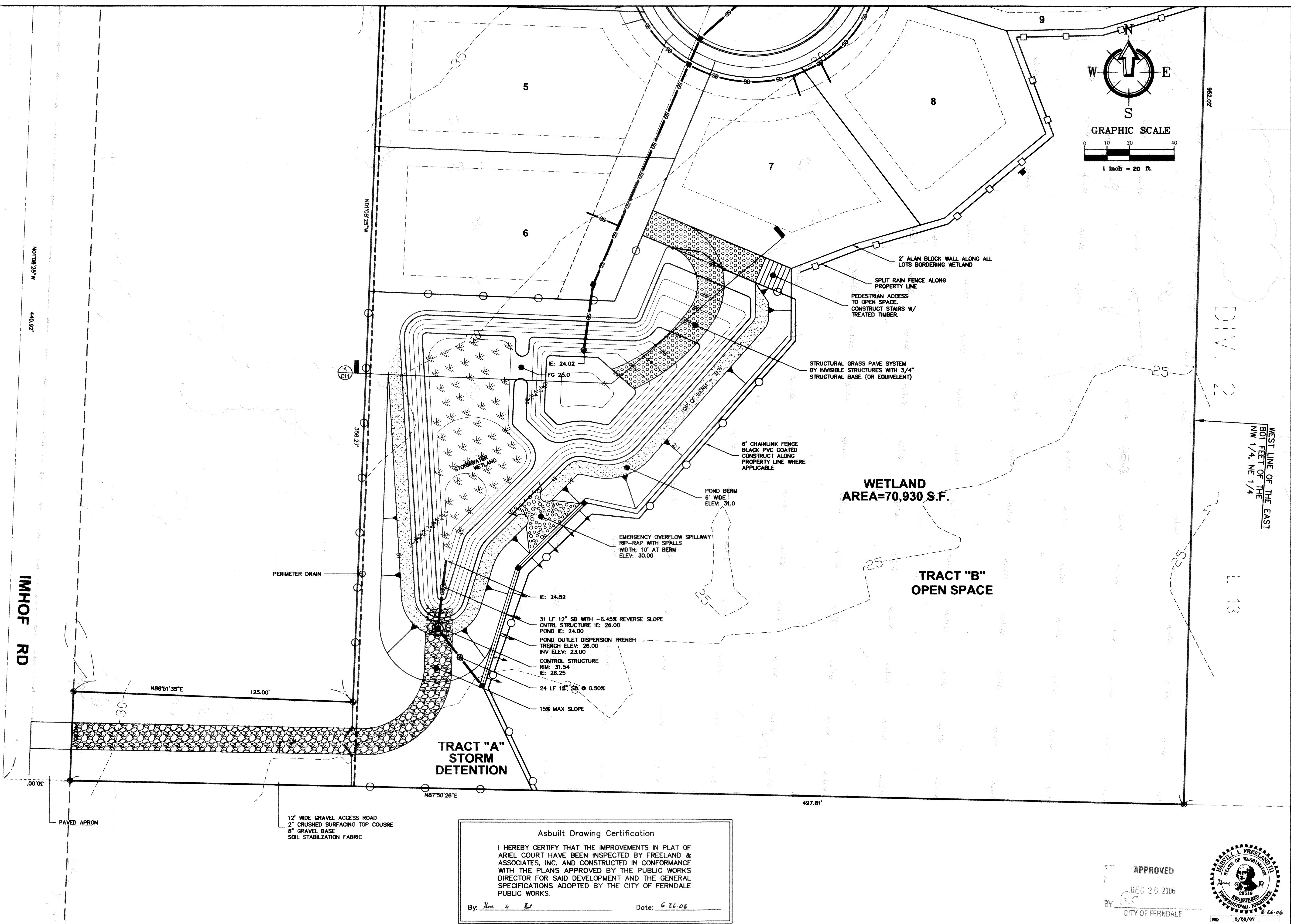
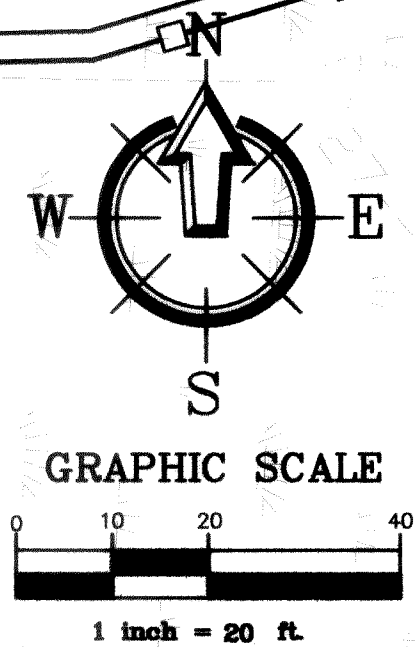






DATE: 5-10-06
SHEET: C8 of 15

00301.009 1:28.08 42



Asbuilt Drawing Certification

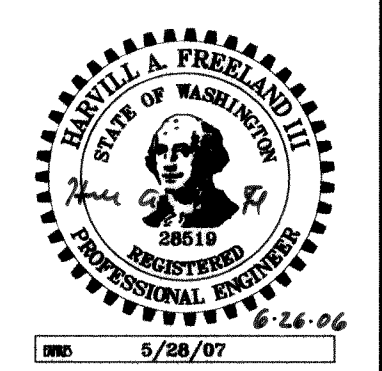
I HEREBY CERTIFY THAT THE IMPROVEMENTS IN PLAT OF ARIEL COURT HAVE BEEN INSPECTED BY FREELAND & ASSOCIATES, INC. AND CONSTRUCTED IN CONFORMANCE WITH THE PLANS APPROVED BY THE PUBLIC WORKS DIRECTOR FOR SAID DEVELOPMENT AND THE GENERAL SPECIFICATIONS ADOPTED BY THE CITY OF FERNDAL

By: Neil A. Bell Date: 6-26-06

APPROVED

DEC 26 2006

CITY OF FERNDAL



CALL BEFORE YOU DIG
FOR BURIED UTILITY LOCATIONS
1-800-424-5555

No.	Date	REVISION

DESIGNED BY:
JPS
DRAWN BY:
JPS
CHECKED BY:
HAF

1408 North Garden Street
Bellingham, WA 98225
t: 360.650.1408
f: 360.650.1401

FREELAND & ASSOCIATES

CLIENT: **ARIEL COURT DEVELOPMENT, INC**
11 BELLWETHER WAY, SUITE 211
BELLINGHAM, WA 98225

PROJECT LOCATION:
2285 DOUGLAS ROAD
FERNDAL, WA 98248

SHEET CONTENTS:

STORMWATER PLAN

DWG #: 04031ASB3
JOB #: 04031
SCALE: H: 1" = 20' V: n/a

DATE: 5-10-06
SHEET: **C9 of 15**

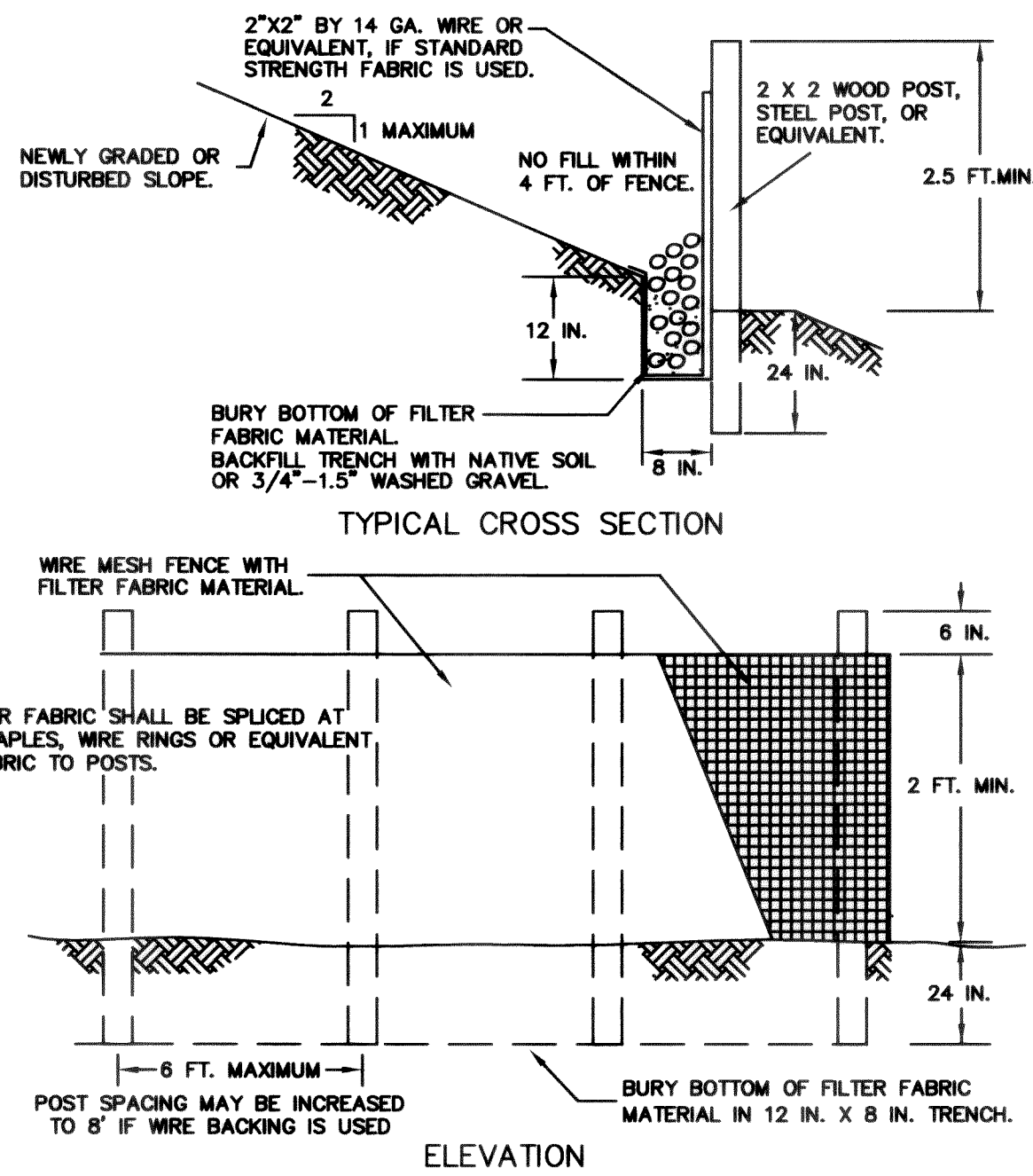
1. APPROVAL OF THE EROSION/SEDIMENTATION CONTROL (ESC) PLAN DOES NOT CONSTITUTE AN APPROVAL OF PERMANENT ROAD OR DRAINAGE DESIGN (E.G., SIZE AND LOCATION OF ROADS, PIPES, RESTRICTORS, CHANNELS, RETENTION FACILITIES, UTILITIES, ETC.).
2. THE IMPLEMENTATION OF THE ESC PLANS AND THE CONSTRUCTION, MAINTENANCE, REPLACEMENT AND UPGRADING OF THESE ESC FACILITIES IS THE RESPONSIBILITY OF THE CONTRACTOR UNTIL ALL CONSTRUCTION IS APPROVED.
3. THE BOUNDARIES OF THE CLEARING LIMITS SHOWN ON THIS PLAN SHALL BE CLEARLY FLAGGED IN THE FIELD PRIOR TO CONSTRUCTION. DURING THE CONSTRUCTION PERIOD, NO DISTURBANCE BEYOND THE FLAGGED CLEARING LIMITS SHALL BE PERMITTED. THE FLAGGING SHALL BE MAINTAINED BY THE CONTRACTOR FOR THE DURATION OF CONSTRUCTION.
4. THE ESC FACILITIES SHOWN ON THE PLANS MUST BE CONSTRUCTED IN CONJUNCTION WITH ALL CLEARING AND GRADING ACTIVITIES, AND IN SUCH A MANNER AS TO INSURE THAT SEDIMENT LADEN WATER DOES NOT ENTER THE DRAINAGE SYSTEM OR VIOLATE APPLICABLE WATER STANDARDS.
5. THE ESC FACILITIES SHOWN ON THE PLANS ARE THE MINIMUM REQUIREMENTS FOR ANTICIPATED SITE CONDITIONS. DURING THE CONSTRUCTION PERIOD, THESE ESC FACILITIES SHALL BE UPGRADED (E.G., ADDITIONAL SUMPS, RELOCATION OF DITCHES AND SILT FENCES, ETC.) AS NEEDED FOR UNEXPECTED STORM EVENTS.
6. THE ESC FACILITIES SHALL BE INSPECTED DAILY BY THE CONTRACTOR AND MAINTAINED AS NECESSARY TO ENSURE THEIR CONTINUED FUNCTIONING.
7. ANY AREA STRIPPED OF VEGETATION, INCLUDING ROADWAY EMBANKMENTS, WHERE NO FURTHER WORK IS ANTICIPATED FOR A PERIOD OF 7 DAYS (MAY 1ST - SEPT. 30TH) OR TWO DAYS (OCT. 1ST - APRIL 1ST) SHALL BE IMMEDIATELY STABILIZED WITH THE APPROVED ESC METHODS (E.G., SEEDING, MULCHING, NETTING, EROSION BLANKETS, ETC.).
8. ANY AREA NEEDING ESC MEASURE, NOT REQUIRING IMMEDIATE ATTENTION, SHALL BE ADDRESSED WITHIN FIFTEEN (15) DAYS.
9. THE ESC FACILITIES ON INACTIVE SITES SHALL BE INSPECTED AND MAINTAINED A MINIMUM OF ONCE A MONTH OR WITHIN THE 48 HOURS FOLLOWING A STORM EVENT.
10. AT NO TIME SHALL MORE THAN ONE FOOT OF SEDIMENT BE ALLOWED TO ACCUMULATE WITHIN A CATCH BASIN. ALL CATCH BASINS AND CONVEYANCE LINES SHALL BE CLEANED PRIOR TO PAVING. THE CLEANING OPERATION SHALL NOT FLUSH SEDIMENT LADEN WATER INTO THE DOWNSTREAM SYSTEM.
11. STABILIZED CONSTRUCTION ENTRANCES AND WASH PADS SHALL BE INSTALLED AT THE BEGINNING OF CONSTRUCTION AND MAINTAINED FOR THE DURATION OF THE PROJECT. ADDITIONAL MEASURES MAY BE REQUIRED TO INSURE THAT ALL PAVED AREAS ARE KEPT CLEAN FOR THE DURATION OF THE PROJECT.
12. DURING THE TIME PERIOD OF NOVEMBER 1 THROUGH MARCH 31, ALL PROJECT DISTURBED AREAS GREATER THAN 5,000 SQUARE FEET THAT ARE TO BE LEFT UNWORKED FOR MORE THAN 12 HOURS, SHALL BE COVERED BY ONE OF THE FOLLOWING COVER MEASURES: MULCH, SODDING OR PLASTIC COVERING.
13. TREES SHALL BE PLANTED IN PITS HAVING DIAMETERS AT LEAST TWICE THAT OF THE ROOT BALL OR ROOT SYSTEM. THE OUTER 6 INCHES OF MATERIAL SHALL BE REMOVED BY HAND METHODS. THE WALL AND BOTTOM OF THE PITS SHALL BE REMOVED BY HAND METHODS. THE WALL AND BOTTOM OF THE PITS SHALL BE ROUGHED TO ALLOW FOR ROOT PENETRATION. ALL PLANTING POCKETS SHALL BE BACKFILLED BY JETTING TO PREVENT AIR POCKETS IN THE LOWER THIRD OF THE HOLE. TREES SHALL BE WATERED GENEROUSLY DURING AND AFTER BACKFILL. BACKFILL MATERIALS SHALL BE SANDY LOAM.
14. PUBLIC RIGHTS OF WAY SHALL BE KEPT IN A CLEAN AND SERVICEABLE MANNER AT ALL TIMES. IN THE EVENT MATERIAL ARE INADVERTENTLY DEPOSITED ON ROADWAYS, THE MATERIAL SHALL BE PROMPTLY REMOVED. MATERIALS ARE TO BE SWEEPED AND REMOVED PRIOR TO ANY FLUSHING. PUBLIC AND PRIVATE DRAINAGE WAYS SHALL BE PROTECTED FROM POLLUTION.
15. ALL TREES SHALL BE 4 INCHES TO 6 INCHES CALIPER, B & B, UNLESS OTHERWISE NOTED. MEASUREMENTS, CALIPER, BRANCHING, GRADING, QUALITY, BAILING AND BURLAPPING SHALL FOLLOW THE CODE OF STANDARDS OF THE AMERICAN ASSOCIATION OF NURSEYMEN IN THE AMERICAN STANDARD FOR NURSERY STOCK. ALL PLANTS SHALL HAVE NATURAL SHAPE.
16. FERTILIZER FOR TREES SHALL BE FORMULA 4-2-2 "TRANSPLANTER" AS MANUFACTURED BY PACIFIC AGRO COMPANY AND SHALL BE APPLIED AT THE RATE OF 8 OUNCES PER TREE. FOUR PLANTING TABLETS, 21 GRAM SIZE AS MANUFACTURED BY AGRIFORM INTERNATIONAL CHEMICALS, INC., 20-10-5 ANALYSIS SHALL BE APPLIED. TREE STAKING SHALL BE IN ACCORDANCE WITH DETAILS IN THE PLAN.
17. ALL TREES SHALL BE PROPERLY PROTECTED AGAINST HARM FROM WIND, UNUSUAL WEATHER AND THE PUBLIC. THE CONTRACTOR SHALL PERFORM ALL NECESSARY MAINTENANCE INCLUDING WATERING, PRUNING AND SPRAYING UNTIL ONE YEAR AFTER ACCEPTANCE. ALL TREES MUST BE IN A VIGOROUS GROWING CONDITION AT THE END OF THE ONE-YEAR GUARANTEE PERIOD. DEFECTIVE MATERIALS, AS DETERMINED BY THE ENGINEER, SHALL BE REPLACED IMMEDIATELY WITH SPECIMENS OF THE SAME SPECIES AND SIZE AS THE ORIGINAL.

A EROSION CONTROL NOTES
nts

Asbuilt Drawing Certification

I HEREBY CERTIFY THAT THE IMPROVEMENTS IN PLAT OF ARIEL COURT HAVE BEEN INSPECTED BY FREELAND & ASSOCIATES, INC. AND CONSTRUCTED IN CONFORMANCE WITH THE PLANS APPROVED BY THE PUBLIC WORKS DIRECTOR FOR SAID DEVELOPMENT AND THE GENERAL SPECIFICATIONS ADOPTED BY THE CITY OF FERNDAL

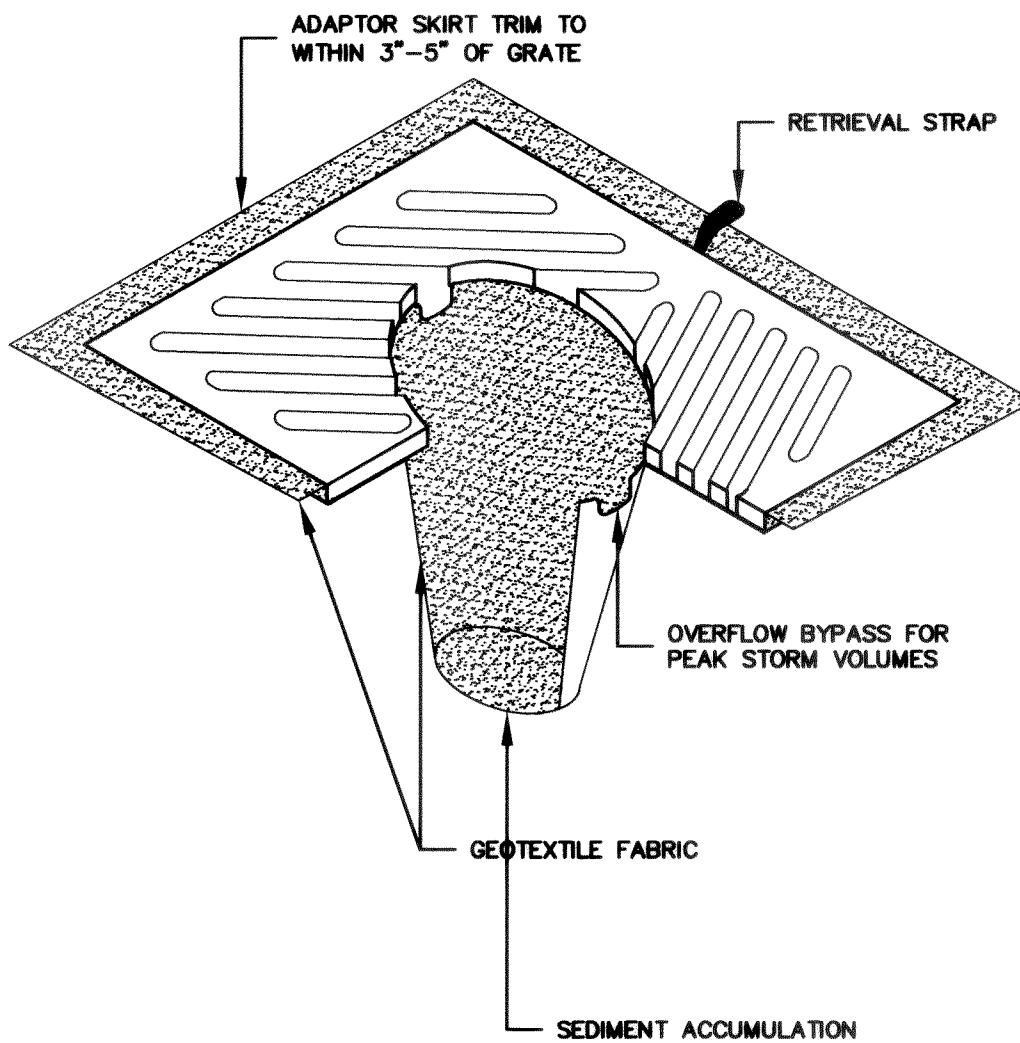
By: Date: 6-26-06



NOTES:

1. FENCE SHALL NOT BE INSTALLED ON SLOPES STEEPER THAN 2 : 1.
2. JOINTS IN FILTER FABRIC SHALL BE OVERLAPPED 6 INCHES AT POST.
3. USE STAPLES, WIRE RINGS, OR EQUIVALENT TO ATTACH FABRIC TO WIRE FENCE.
4. REMOVE SEDIMENT WHEN IT REACHES 1/3 FENCE HEIGHT.

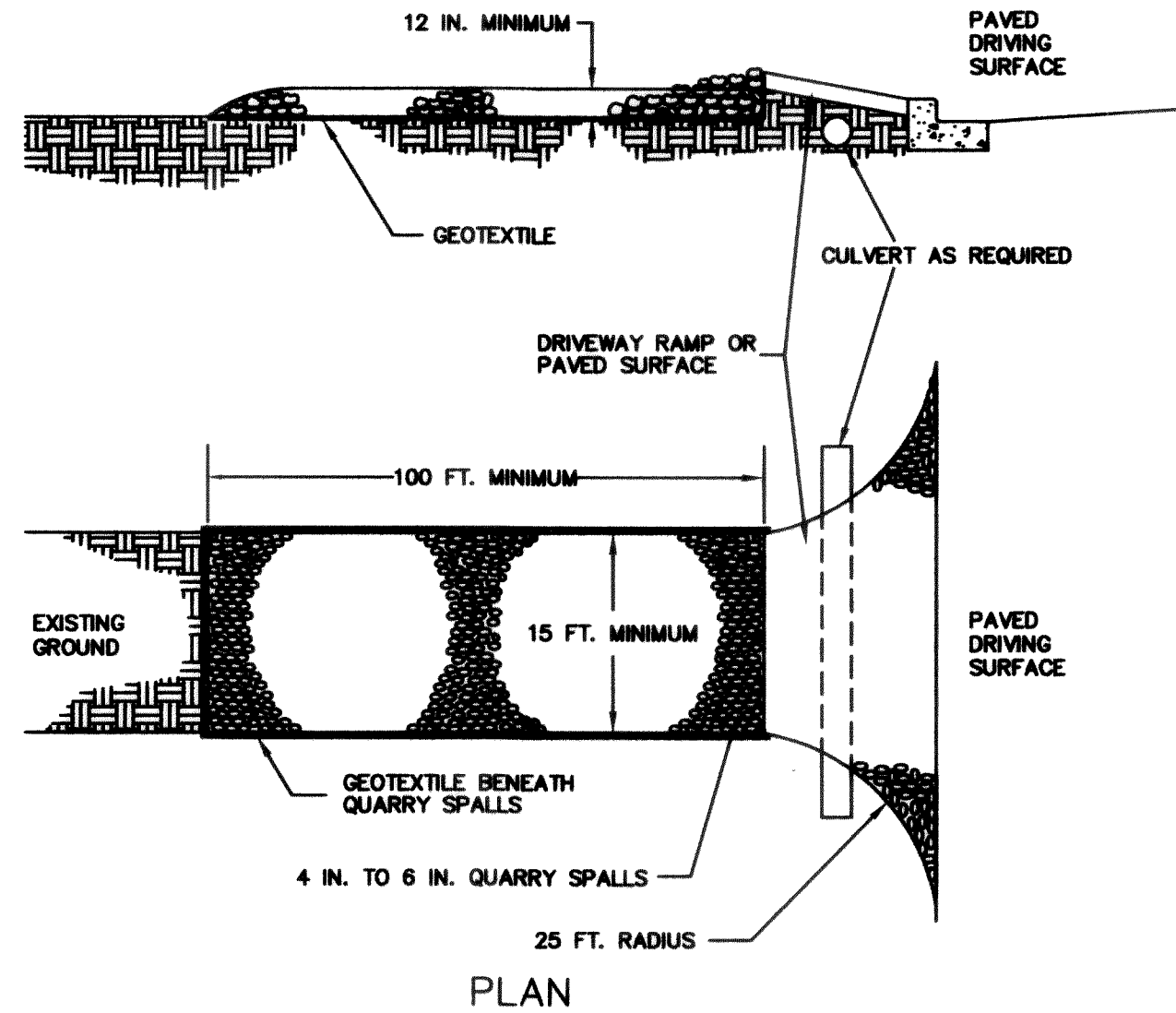
B SILT FENCE
nts



NOTES:

1. INSERT SHALL BE INSTALLED PRIOR TO CLEARING AND GRADING ACTIVITY, OR UPON PLACEMENT OF A NEW CATCH BASIN.
2. SEDIMENT SHALL BE REMOVED FROM THE UNIT WHEN IT BECOMES HALF FULL.
3. SEDIMENT REMOVAL SHALL BE ACCOMPLISHED BY REMOVING THE INSERT, EMPTYING, AND RE-INSERTING IT INTO THE CATCH BASIN.

D CATCH BASIN INSERT
nts

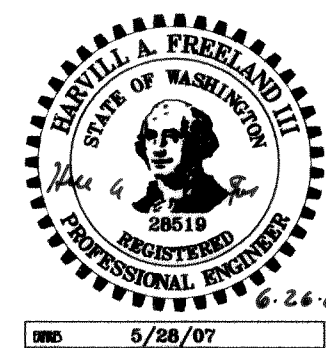


NOTES:

1. PAD SHALL BE REMOVED AND REPLACED WHEN SOIL IS EVIDENT ON THE SURFACE OF THE PAD OR AS DIRECTED BY THE CITY.
2. PAD SHALL BE INSTALLED IN PLANTING STRIP AS APPROPRIATE.
3. PAD THICKNESS SHALL BE INCREASED IF SOIL CONDITIONS DICTATE OR PER THE DIRECTION OF THE CITY.

C CONSTRUCTION ENTRANCE
nts

APPROVED
DEC 26 2006
BY:
CITY OF FERNDAL



CALL BEFORE YOU DIG
FOR BURIED UTILITY LOCATIONS
1-800-424-5555

No. Date REVISION

By

DESIGNED BY:
JPS
DRAWN BY:
JPS
CHECKED BY:
JPS

1408 North Garden Street
Bellingham, WA 98225
t: 360.650.1408
f: 360.650.1401
FREELAND & ASSOCIATES

CLIENT: **ARIEL COURT DEVELOPMENT, INC**
11 BELLWETHER WAY, SUITE 211
BELLINGHAM, WA 98225
PROJECT LOCATION: 2285 DOUGLAS ROAD
FERNDAL, WA 98248

SHEET CONTENTS:
TEMPORARY EROSION & SEDIMENTATION CONTROL DETAILS

DWG #: 04031ASB3
JOB #: 04031
SCALE: H: n/a V: n/a

DATE: 5-10-06
SHEET: **C10 of 15**



- A** SIDEWALK
nts

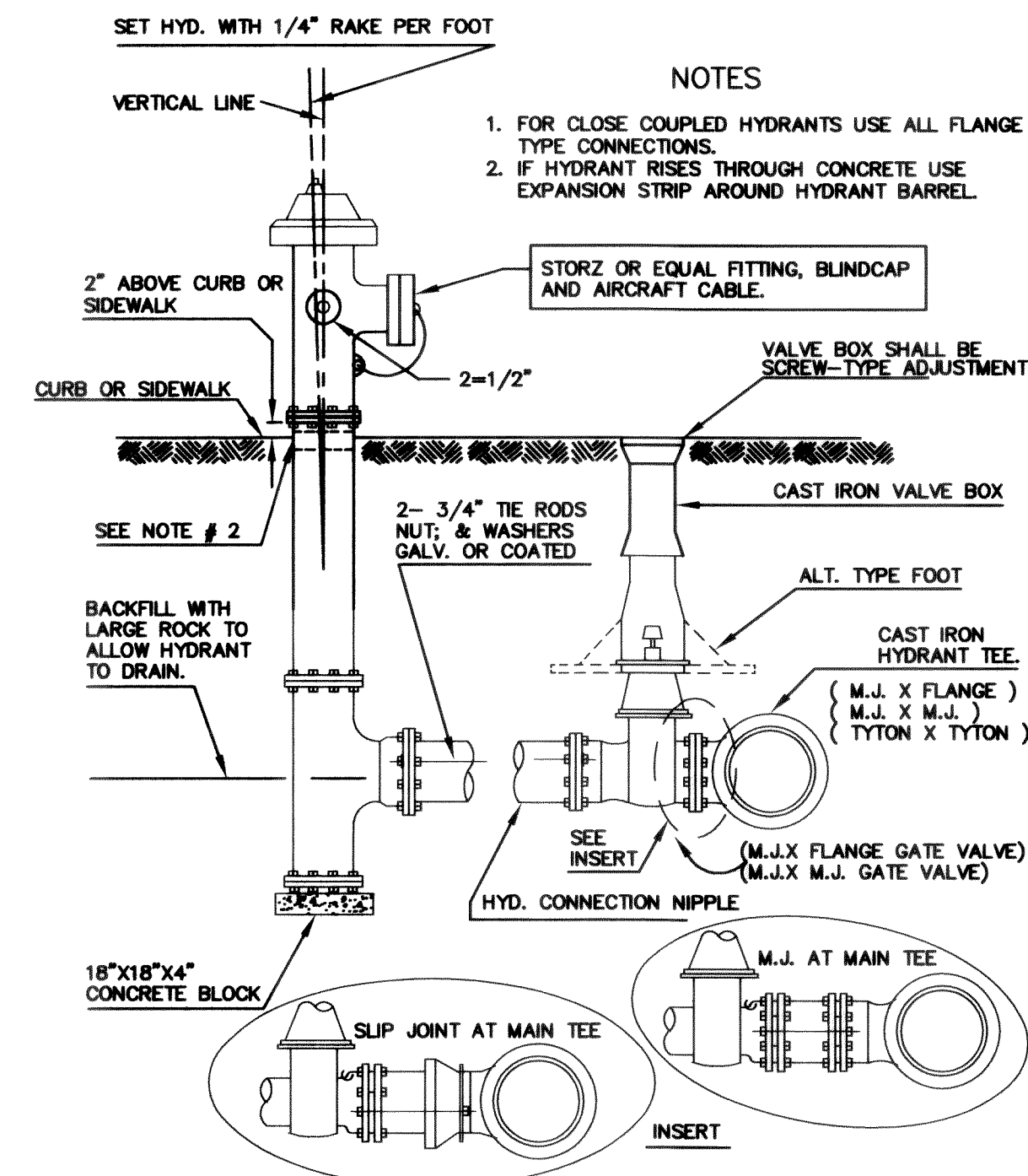
DATE:	5-10-06
SHEET:	C11 of 15

00301-011 1:28.08 ~~42~~

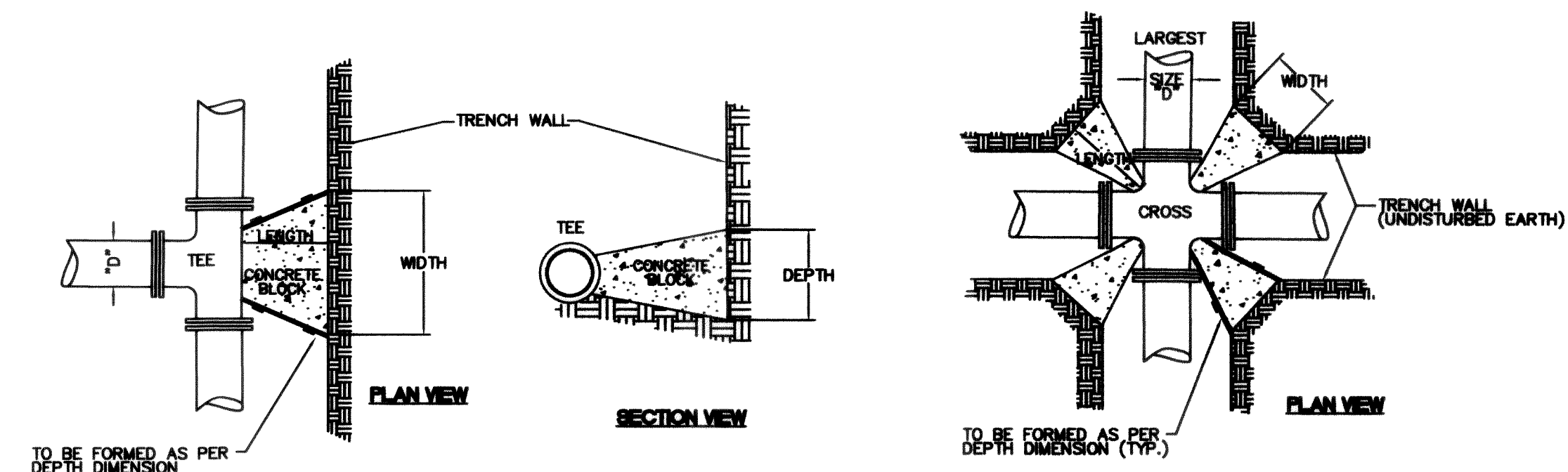
1. FIRE HYDRANTS SHALL BE FOR COMMON FERRISDALE WATER WORKS SERVICE AND SHALL BE IN COMPLIANCE WITH THE LATEST EDITION OF AWWA C 502 "STANDARD FOR DRY-BARREL FIRE HYDRANTS."

1. FIRE HYDRANTS SHALL BE FOR COMMON FERRULE WATER WORKS SERVICE AND SHALL BE IN COMPLIANCE WITH THE LATEST EDITION OF AWWA C 502 "STANDARD FOR DRY-BARREL FIRE HYDRANTS."
2. EACH HYDRANT SHALL BE 5-1/4" MAIN VALVE OPENING WITH "O" RING SEALS AND TRAFFIC-TYPE BREAKAWAY DESIGN.
3. HYDRANT OPERATING NUT SHALL OPEN COUNTER-CLOCKWISE WITH THE DIRECTION OF "OPEN" CLEARLY MARKED AT TOP OF HYDRANT. OPERATING AND CAP NUTS SHALL BE PENTAGON IN SHAPE AND THE DIMENSION SHALL BE 1-1/4" POINT TO FLAT (NATIONAL STANDARD).
4. HYDRANT SHALL BE 6" INLET MECHANICAL JOINT (WITH ACCESSORIES) OR AS SPECIFIED. HYDRANT SHALL HAVE 1/2" HIGH ABOVE THE PUMPER NOZZLE. HYDRANTS TO BE ACCEPTABLE FOR A 3-1/2" DEPTH OF BURY. HYDRANT TO HAVE RUST-PROOF AUTOMATIC DRAIN.
5. HYDRANT TO BE CAPABLE OF ROTATING THROUGH 360 DEGREES.
6. THREAD SPECIFICATIONS: HOSE NOZZLES TO BE 2-1/2" INSIDE DIAMETER WITH NATIONAL STANDARD THREADS. PUMPER NOZZLE TO BE 4" INSIDE DIAMETER WITH THREADS 80 DEGREE - 6 THREADS PER INCH, PITCH DIAMETER - 4.708", OUTSIDE DIAMETER - 4.817".
7. EACH HYDRANT PUMPER PORT SHALL BE EQUIPPED WITH A NON-LOCKING SNAP-TITE STORZ #3/4" NF, 5" FITTING AND BLIND CAP (STORZ OR EQUAL). THE BLIND CAP SHALL BE ATTACHED TO THE FITTING WITH A SECTION OF AIRCRAFT CABLE.
8. HYDRANT TO BE PAINTED RED WITH WHITE OME AND CAPS. PAINT SHALL BE DURABLE EXTERIOR GRADE, CHIP AND STAIN RESISTANT.
9. ONLY HYDRANTS OF THE "COREY TYPE" OR CENTER-STEM HYDRANTS WITH APWA APPROVED RATING OF 200 PSI WORKING PRESSURE WILL BE ACCEPTED.
10. ACCEPTANCE OF ANY HYDRANT, OTHER THAN A TYPE CURRENTLY IN SERVICE ON THE CITY SYSTEM, WILL BE ALLOWED ONLY IF ALL NECESSARY SPECIAL REPAIR TOOLS AND A TRAINING SESSION FOR MAINTENANCE AND REPAIR IS PROVIDED AT NO COST TO THE CITY. ANY HYDRANT THAT DEVIATES FROM THE SPECIFICATIONS MUST BE APPROVED BY THE OPERATIONS ENGINEER AND/OR THE WATER SUPERINTENDENT.

A FIRE HYDRANT NOTES



B FIRE HYDRANT ASSEMBLY

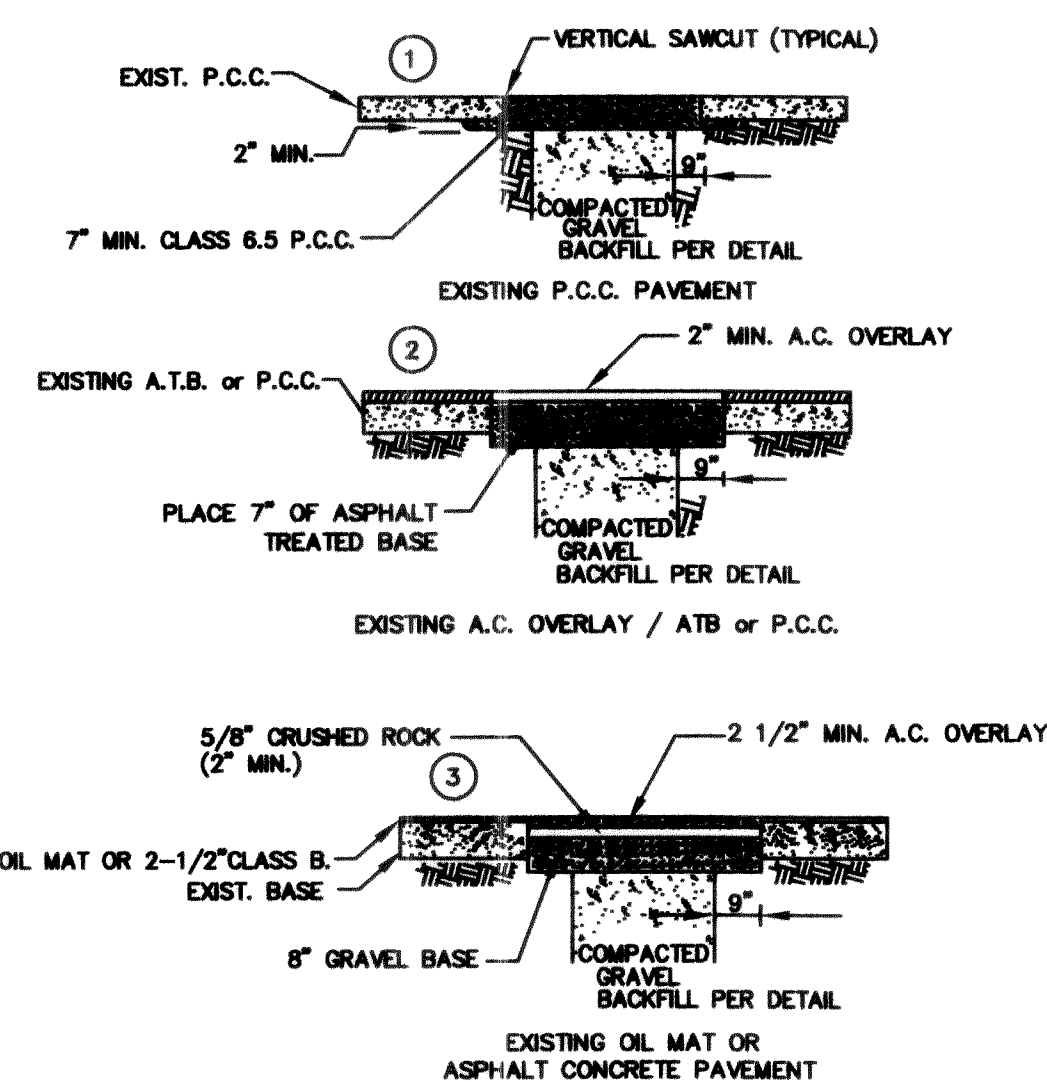


"D"	WIDTH	DEPTH	LENGTH	VOL.
6"	1'-6"	1'-6"	12"	3.0
8"	2'-0"	2'-0"	12"	4.5
10"	2'-6"	2'-6"	12"	7.0
12"	3'-0"	3'-0"	18"	14.0

VOL. = Approx. Volume of Blocking Material Required in cu. ft.

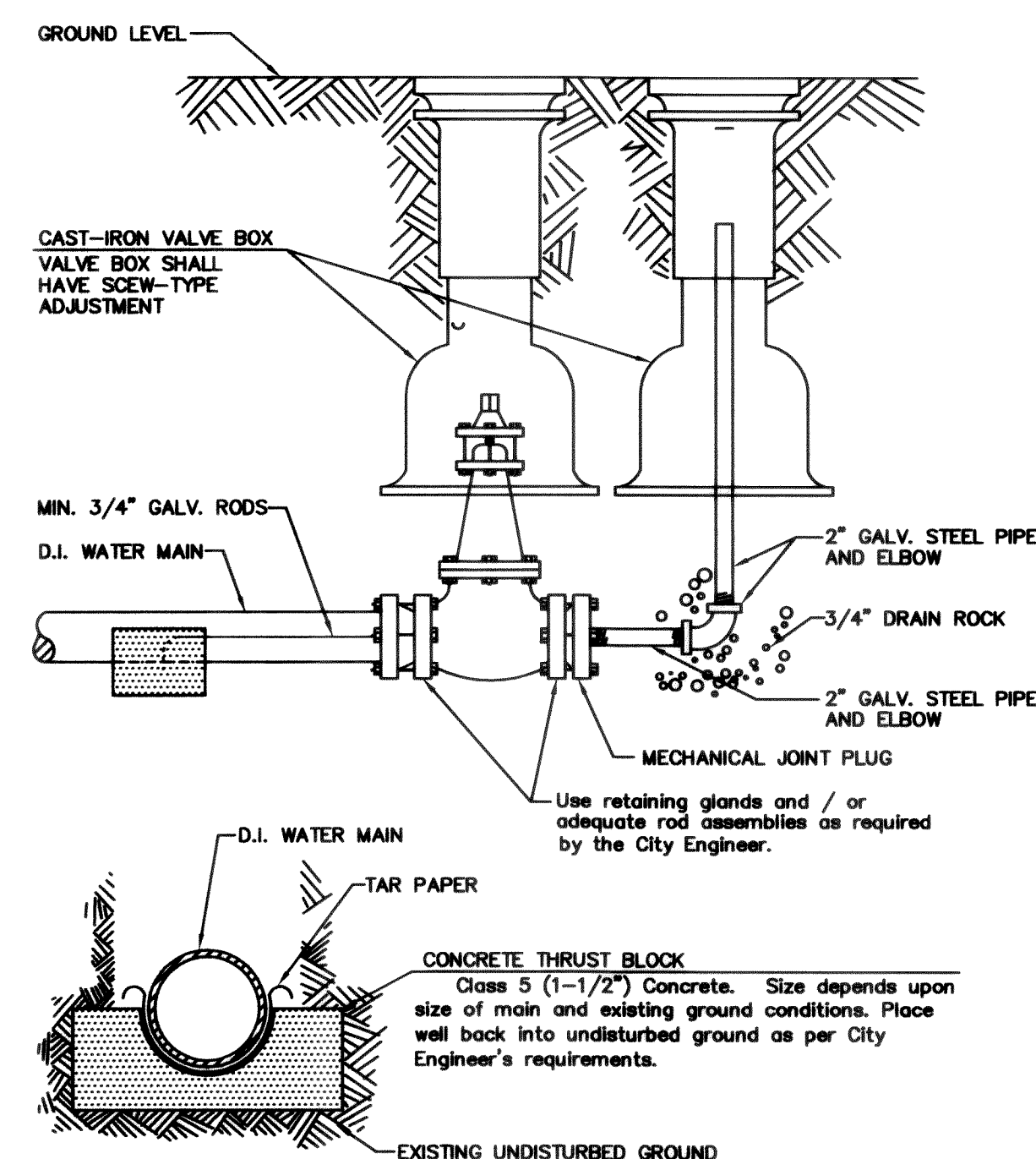
"D"	WIDTH	DEPTH	LENGTH	VOL.	X4 blocks/joint
6"	1'-0"	1'-0"	12"	0.83	2.50 cu ft
8"	1'-3"	1'-3"	12"	1.00	4.01 cu ft
10"	1'-6"	1'-6"	12"	1.63	6.50 cu ft
12"	1'-9"	1'-9"	18"	3.05	12.19 cu ft

VOL. = Approx. Volume of Blocking Material Required
in cu. ft.

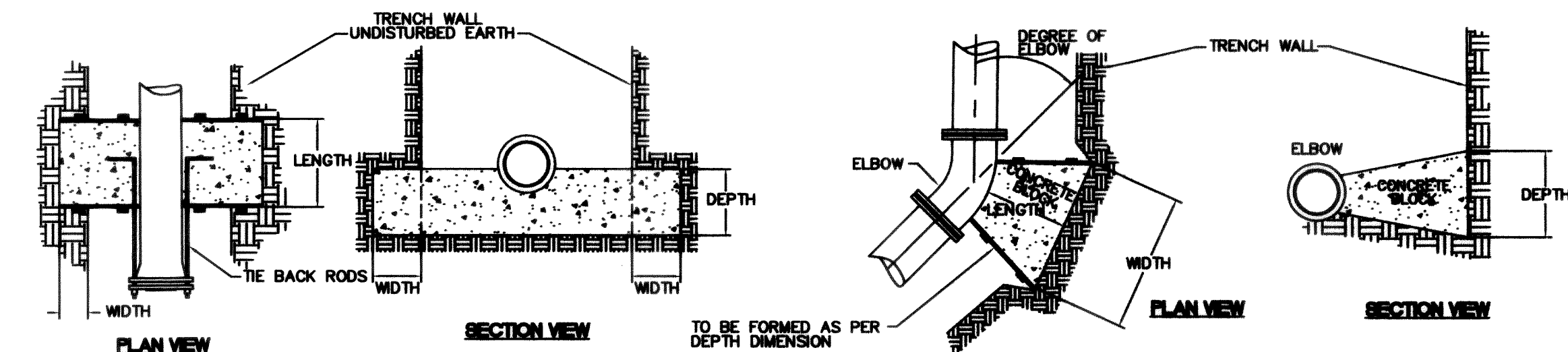


NOTE:
PAVEMENT OVERLAYS FOR No.1, 2, AND 3, TACK ALL EDGES AND ATB BASE SURFACE BEFORE PLACING AC PAVEMENT. SEAL ALL JOINTS WITH HOT ASPHALT (AR-4000W) BETWEEN EXISTING AND NEW AC PAVEMENT IMMEDIATELY AFTER FINISH ROLLING.

C PAVEMENT RESTORATION



B BLOW OFF ASSEMBLY
nts C.O.F. DWG W-9



"D"	WIDTH	DEPTH	LENGTH	*VOL.	# OF RODS	ROD DIA.
6"	1'-6"	1'-6"	12'	7.5	2	1/2"
8"	2'-0"	2'-0"	18'	20.0	2	5/8"
10"	2'-6"	2'-6"	24'	37.5	2	3/4"
12"	2'-9"	2'-9"	24'	44.0	4	3/4"

*VOL. = Approx. Volume of Blocking Material Required in cu. ft.
RODS: A36 STEEL MINIMUM

SIZE	LENGTH	11 1/4"			22 1/2"			45"			90"		
		WIDTH	DEPTH	VOL	WIDTH	DEPTH	VOL	WIDTH	DEPTH	VOL	WIDTH	DEPTH	VOL
6"	12"	1'-0"	1'-0"	0.63	1'-0"	1'-0"	0.63	1'-6"	1'-6"	1.25	2'-3"	1'-6"	1.88
8"	12"	1'-3"	1'-3"	1.00	1'-3"	1'-3"	1.00	1'-9"	1'-9"	1.75	3'-0"	2'-0"	3.33
10"	12"	1'-9"	1'-6"	1.72	1'-9"	1'-6"	1.72	2'-3"	2'-3"	2.88	3'-6"	2'-6"	4.88
12"	18"	2'-0"	1'-9"	3.48	2'-0"	1'-9"	3.48	2'-9"	2'-6"	5.98	4'-0"	3'-0"	10.00

VOL. = Approx. Volume of Blocking Material Required in cu. ft.

A THRUST BLOCK

SOIL BEARING CAPACITY 1500 PSF MINIMUM
100 P.S.I. OPERATING PRESSURE

Asbuilt Drawing Certification

I HEREBY CERTIFY THAT THE IMPROVEMENTS IN PLAT OF ARIEL COURT HAVE BEEN INSPECTED BY FREELAND & ASSOCIATES, INC. AND CONSTRUCTED IN CONFORMANCE WITH THE PLANS APPROVED BY THE PUBLIC WORKS DIRECTOR FOR SAID DEVELOPMENT AND THE GENERAL SPECIFICATIONS ADOPTED BY THE CITY OF FERNDALE PUBLIC WORKS.

By: Harold A. Fennell Date: 6-26-06

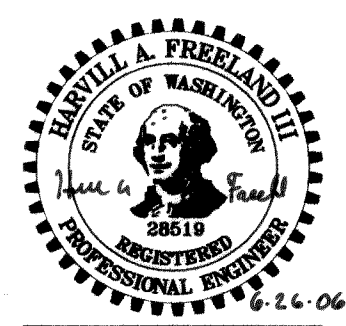
Date: 6-26-06

APPROVED

DEC 26 2006

BY RC
CITY OF FERNDALE

CITY OF FERNDAL



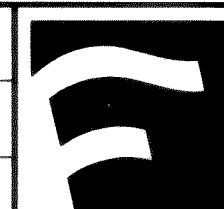
5/28/07

**CALL BEFORE YOU DIG
FOR BURIED UTILITY LOCATIONS
1-800-424-5555**

DESIGNED BY:
JPS

DRAWN BY:
JPS

CHECKED BY:
HAF



1408 North Garden Street
Bellingham, WA 98225

t: 360.650.1408
f: 360.650.1401

F R E E L A N D
& A S S O C I A T E S

CLIENT: **ARIEL COURT DEVELOPMENT, INC**
BELLWETHER WAY, SUITE 211
BELLINGHAM, WA 98225

PROJECT LOCATION:
2285 DOUGLAS ROAD
FERNDALE, WA 98248

SHEET CONTENTS:

WATER DETAILS

DWG #:	04031ASB3
JOB #:	04031
SCALE:	
H: n/g	V: n/g

DATE:	5-10-06
SHEET:	C14 of 15

C14 of 15

C14 of 15

GENERAL REQUIREMENTS

1. ALL WORK SHALL BE PERFORMED IN ACCORDANCE WITH THE STANDARD SPECIFICATIONS FOR ROAD, BRIDGE AND MUNICIPAL CONSTRUCTION, CURRENT EDITION AND THE CITY OF FERNDALE DEVELOPMENT STANDARDS AND SHALL BE SUBJECT TO APPROVAL BY THE CITY OF FERNDALE. IN THE EVENT OF A CONFLICT, THE MORE STRINGENT REQUIREMENT SHALL APPLY.
2. THE CONTRACTOR SHALL BE RESPONSIBLE FOR DETERMINING SUB-SURFACE CONDITIONS AND SOILS TYPES.
3. THE SURVEYOR SHALL LAY OUT AND SET ANY CONSTRUCTION STAKES AND MARKS NEEDED TO ESTABLISH THE LINES, GRADES, SLOPES OR CROSS-SECTIONS AS SHOWN ON THE PLANS OR AS STAKED BY THE ENGINEER.
4. THROUGHOUT THE WORK, THE CONTRACTOR SHALL COMPLY WITH ALL PERMITS.
5. THE CONTRACTOR SHALL PROTECT ALL PRIVATE AND PUBLIC UTILITIES FROM DAMAGE RESULTING FROM THE WORK.
6. WHEN THE CONTRACTOR CONSIDERS THE WORK PHYSICALLY COMPLETE AND READY FOR FINAL INSPECTION, THE CONTRACTOR SHALL REQUEST THAT CITY INSPECTOR TO SCHEDULE A FINAL INSPECTION. THE INSPECTOR WILL MAKE A FINAL INSPECTION AND NOTIFY THE CONTRACTOR IN WRITING OF ALL PARTICULARS IN WHICH THE FINAL INSPECTION REVEALS THE WORK INCOMPLETE OR UNACCEPTABLE. THE CONTRACTOR SHALL IMMEDIATELY TAKE SUCH CORRECTIVE MEASURES AS ARE NECESSARY TO REMEDY THE LISTED DEFICIENCIES.
7. BEFORE ANY CONSTRUCTION OR DEVELOPMENT ACTIVITY A PRE-CONSTRUCTION MEETING MUST BE HELD BETWEEN THE CONTRACTOR, OWNER, CITY ENGINEER AND PROJECT ENGINEER. (MINIMUM 3 DAYS PRIOR TO STARTING WORK)
8. A COPY OF THESE APPROVED PLANS MUST BE ON THE JOB SITE WHENEVER CONSTRUCTION IS IN PROGRESS.
9. THE CONTRACTOR SHALL BE RESPONSIBLE FOR PROVIDING ADEQUATE SAFEGUARDS, SAFETY DEVICES, PROTECTIVE EQUIPMENT, FLAGGERS, AND ANY OTHER NEEDED ACTIONS TO PROTECT THE LIFE, HEALTH AND SAFETY OF THE PUBLIC, AND TO PROTECT PROPERTY IN CONNECTION WITH THE PERFORMANCE OF WORK COVERED BY THE CONTRACTOR. ANY WORK WITHIN THE TRAVELED RIGHT-OF-WAY THAT MAY INTERRUPT NORMAL TRAFFIC FLOW SHALL REQUIRE AT LEAST ONE FLAGGER FOR EACH LANE OF TRAFFIC AFFECTED. ALL SECTIONS OF THE WSDOT STANDARD SPECIFICATIONS 1-07.23-PUBLIC CONVENIENCE AND SAFETY, SHALL APPLY.
10. PROOF OF LIABILITY INSURANCE SHALL BE SUBMITTED TO THE CITY PRIOR TO THE PRE-CONSTRUCTION MEETING.
11. NO WORK SHALL OCCUR BETWEEN 7:00 PM & 7:00 AM.
12. ALL HARD SURFACED PAVEMENTS MUST BE REPAIRED AT THE CLOSE OF EACH WORK DAY. THE REPAIRS CAN BE TEMPORARY WITH ASPHALT COLD MIX OR PERMANENT WITH HOT MIX ASPHALT OR CONCRETE. ALL REPAIRS SHALL BE ACCORDING TO CITY OF FERNDALE DRAWING R-11.
13. ALL WORK MUST BE INSPECTED BY A REPRESENTATIVE OF THE CITY OF FERNDALE ENGINEERING DIVISION, AND 24 HOURS NOTICE MUST BE GIVEN PRIOR TO STARTING WORK OR TO SCHEDULE INSPECTIONS IN ACCORDANCE WITH SECTION 302 OF THE DEVELOPMENT STANDARDS.
14. UPON COMPLETION OF THE PROJECT A CERTIFIED AS-BUILT PRINT SHALL BE PROVIDED TO THE CITY. AS-BUILTS SHALL BE ACCORDING TO CITY OF FERNDALE SPECIFICATION WA-8. 403.A.4
15. THE LOCATIONS OF UNDERGROUND FACILITIES SHOWN ON THESE PLANS ARE BASED ON FIELD SURVEYS AND LOCAL UTILITY COMPANY RECORDS. IT SHALL BE THE CONTRACTOR'S FULL RESPONSIBILITY TO CONTACT THE VARIOUS UTILITY COMPANIES TO LOCATE THEIR FACILITIES PRIOR TO STARTING CONSTRUCTION. NO EXTRA COMPENSATION SHALL BE PAID TO THE CONTRACTOR FOR DAMAGE AND REPAIR TO THESE FACILITIES CAUSED BY HIS WORK FORCE. CALL 1-800-424-5555 FOR UTILITY LOCATE 48 HOURS PRIOR TO WORK. CONTRACT TO HOLD. THE CONTRACTOR SHALL NOTIFY THE ENGINEER PROMPTLY OF ANY CONFLICT. THE CONTRACTOR SHALL BE RESPONSIBLE FOR MAINTAINING THE INTEGRITY OF ALL ADJACENT UTILITIES WHICH INCLUDE BUT ARE NOT LIMITED TO: WATER, SEWER, STORM SEWER, POWER, TELEPHONE, CABLE TV, IRRIGATION, AND STREET LIGHTING. CONTRACTOR SHALL RESTORE ALL PRIVATE AND PUBLIC PROPERTY DISTURBED BY THE PROJECT UPON COMPLETION OF THE PROJECT.
16. A REVOCABLE ENCROACHMENT PERMIT SHALL BE OBTAINED PRIOR TO COMMENCING WORK IN THE PUBLIC RIGHT OF WAY.

BASES

1. GRAVEL BASES AND BALLAST MAXIMUM PARTICLE SIZE PASSING THE U.S. NO. 200 SIEVE SHALL NOT EXCEED 5%.
2. BALLAST, GRAVEL BASE AND CRUSHED SURFACING SHALL BE COMPACTED TO AT LEAST 95% OF ITS MAXIMUM DRY DENSITY.
3. THE CONTRACTOR OR PROPONENT SHALL BE RESPONSIBLE FOR ALL COMPACTION TESTING. ALL TESTING SHALL BE THROUGH ENGINEERING REVIEW ACCOUNT AND PAID FOR BY THE OWNER.

PAVEMENTS

1. WHERE SHOWN ON THE PLANS, PAVEMENT MARKINGS SHALL BE OBLITERATED UNTIL BLEMISHES CAUSED BY THE PAVEMENT MARKING REMOVAL CONFORM TO THE COLORATION OF THE ADJACENT PAVEMENT.
2. SOIL RESIDUAL HERBICIDE SHALL BE PLACED WITHIN 24 HOURS OF PAVING.
3. A TACK COAT OF ASPHALT SHALL BE APPLIED BETWEEN ALL COURSES OF ASPHALT.
4. ALL PAVEMENT REPAIR SHALL BE SAW-CUT BEFORE REMOVAL. AR-4000W SHALL BE APPLIED TO ALL EDGES OF EXISTING PAVEMENT.
5. ASPHALT CONCRETE PAVEMENT SHALL NOT BE PLACED NOR COMPACTED DURING HOURS OF DARKNESS.
6. SUBGRADE SHALL BE CERTIFIED IN WRITING BY THE ENGINEER PRIOR TO PAVING.

WATER MAINS

1. TEST PRESSURE FOR WATERMAIN ACCEPTANCE SHALL BE 225 p.s.i. AT THE HIGHEST POINT ON THE WATER LINE AND SHALL BE DONE ACCORDING TO CITY OF FERNDALE REQUIREMENTS. ALL PURIFICATION ACCEPTANCE TESTING SHALL BE ACCORDING TO CITY OF FERNDALE REQUIREMENTS. THE PIPE WILL NOT PASS UNLESS A ZERO BACTERIA COUNT IS OBTAINED FOR TWO CONSECUTIVE TESTS 24 HOURS APART.
2. ALL BACKFILL SHALL BE IMPORTED GRAVEL AND SHALL CONFORM TO SECTION 2-09 OF THE STANDARD SPECIFICATIONS FOR ROAD, BRIDGE AND MUNICIPAL CONSTRUCTION.
3. ALL PIPE SHALL HAVE A MINIMUM COVER OF 3.5 FEET.

EARTHWORK

1. THE CONTRACTOR SHALL CLEAR, GRUB AND CLEAN UP THOSE AREAS SHOWN ON THE PLANS.
2. THE CONTRACTOR SHALL EXCAVATE AND GRADE TO THE ALIGNMENT, GRADE AND CROSS-SECTIONS SHOWN IN THE PLANS OR ESTABLISHED BY THE ENGINEER. IN ACCORDANCE WITH THE PROJECT GEOTECHNICAL ENGINEERING STUDY.
3. MAXIMUM DENSITY AND OPTIMUM MOISTURE FOR GRANULAR MATERIALS WILL BE DETERMINED USING ASTM D-1557 TEST METHOD.
4. UNSUITABLE MATERIAL NOT FIT FOR A SUB-GRADE SHALL BE EXCAVATED TO THE BOUNDARIES SET BY THE ENGINEER AND REPLACED WITH A SUITABLE BACKFILL MATERIAL.

STORM DRAINAGE

1. ALL PIPE AND APPURTENANCES SHALL BE LAID ON A PROPERLY PREPARED FOUNDATION IN ACCORDANCE WITH WSDOT 7-08. THIS SHALL INCLUDE LEVELING AND COMPACTING THE TRENCH BOTTOM, THE TOP OF THE FOUNDATION MATERIAL AND ANY REQUIRED PIPE BEDDING, TO A UNIFORM GRADE SO THAT THE ENTIRE PIPE IS SUPPORTED BY A UNIFORMLY DENSE UNYIELDING BASE.
2. ALL DRAINAGE STRUCTURES, SUCH AS CATCH BASINS AND MANHOLES, NOT LOCATED WITHIN A TRAVELED ROADWAY OR SIDEWALK, SHALL HAVE SOLID LOCKING LIDS. ALL DRAINAGE STRUCTURES ASSOCIATED WITH A PERMANENT RETENTION/DETENTION FACILITY SHALL HAVE SOLID LOCKING LIDS.
3. ALL CATCH BASIN GRATES SHALL INCLUDE THE STAMPING "OUTFALL TO STREAM, DUMP NO POLLUTANTS."

STORM DRAINAGE CONT.

4. ALL DRIVEWAY CULVERTS LOCATED WITHIN THE RIGHT-OF-WAY SHALL BE OF SUFFICIENT LENGTH TO PROVIDE A MINIMUM 3:1 SLOPE FROM THE EDGE OF THE DRIVEWAY TO THE BOTTOM OF THE DITCH. CULVERTS SHALL HAVE BEVELED END SECTIONS PER WSDOT
5. THE CONTRACTOR IS RESPONSIBLE FOR COORDINATING THE LOCATIONS OF ALL STUB-OUT CONVEYANCE LINES WITH RESPECT TO THE UTILITIES (E.G. POWER, GAS, TELEPHONE, TELEVISION).

SANITARY SEWER SPECIFICATIONS

1. ALL WORK AND MATERIALS SHALL BE IN ACCORDANCE WITH THE STANDARD SPECIFICATIONS FOR ROAD, BRIDGE, AND MUNICIPAL CONSTRUCTION, CURRENT EDITION AND THE CITY OF FERNDALE DEVELOPMENT STANDARDS SECTION 5 AND SHALL BE SUBJECT TO APPROVAL BY THE CITY OF FERNDALE.
2. FOUR INCH THROUGH TWELVE-INCH PIPE SHALL BE PVC PIPE CONFORMING TO ASTM D-3034, SDR-35 OR EQUAL. PIPE JOINTS SHALL BE MADE WITH FLEXIBLE GASKETS CONFORMING TO THE REQUIREMENTS OF SECTION 7-17.3G (2)E OF THE STANDARD SPECIFICATIONS.
3. TRENCH EXCAVATION SHALL BE ACCORDING TO SECTION 7-17.3(1)A OF THE STANDARD SPECIFICATIONS.
4. THE BEDDING SHALL BE PEA GRAVEL PER SS-1.
5. PIPE LAYING SHALL MEET THE REQUIREMENTS OF SECTION 7-17.3(2)B OF THE STANDARD SPECIFICATIONS.
6. ALL SIDE SEWERS SHALL BE CONSTRUCTED ACCORDING TO THE CITY OF FERNDALE STANDARD PLAN SS-8 THROUGH SS-8. CONNECT SIDE SEWERS PER COF DWG SS-12.
7. ALL TRENCH BACKFILL UNDER EXISTING OR FUTURE PAVING SHALL BE BANK RUN GRAVEL, CLASS "B" AND SHALL BE COMPACTED TO 95% OF MAXIMUM DENSITY.
8. ALL SEWER PIPE WILL BE PRESSURE TESTED AND WILL SCANNED BY MEANS OF A TV CAMERA PRIOR TO ACCEPTANCE BY THE CITY OF FERNDALE.
9. ALL MANHOLES WILL BE ACCORDING TO THE CITY OF FERNDALE STANDARD PLAN NO. SS-2, THROUGH SS-4.
10. ALL CLEANOUTS SHALL BE ACCORDING TO CITY OF FERNDALE STANDARD PLAN NO. SS-5.
11. ALL HARD SURFACED PAVEMENTS MUST BE REPAIRED AT THE CLOSE OF EACH WORK DAY. THE REPAIRS CAN BE TEMPORARY WITH ASPHALT COLD MIX OR PERMANENT WITH HOT MIX ASPHALT OR CONCRETE.
12. ALL WORK MUST BE INSPECTED AND APPROVED BY A REPRESENTATIVE OF THE CITY OF FERNDALE PUBLIC WORKS, AND 24 HOURS NOTICE MUST BE GIVEN PRIOR TO STARTING WORK OR TO SCHEDULE INSPECTIONS.
13. ALL TESTING SHALL BE DONE IN THE PRESENCE AND UNDER THE SUPERVISION OF A REPRESENTATIVE OF THE CITY OF FERNDALE.

Asbuilt Drawing Certification

I HEREBY CERTIFY THAT THE IMPROVEMENTS IN PLAT OF ARIEL COURT HAVE BEEN INSPECTED BY FREELAND & ASSOCIATES, INC. AND CONSTRUCTED IN CONFORMANCE WITH THE PLANS APPROVED BY THE PUBLIC WORKS DIRECTOR FOR SAID DEVELOPMENT AND THE GENERAL SPECIFICATIONS ADOPTED BY THE CITY OF FERNDALE PUBLIC WORKS.

By: Jim A. Ba

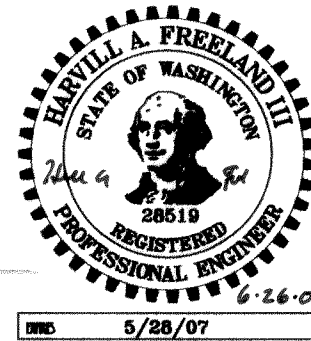
Date: 6-26-06

APPROVED

DEC 26 2006

By: CC

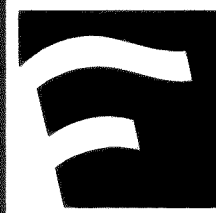
CITY OF FERNDALE



5/28/07

CALL BEFORE YOU DIG
FOR BURIED UTILITY LOCATIONS
1-800-424-5555

DESIGNED BY:
JPS
DRAWN BY:
JPS
CHECKED BY:
HAF



1408 North Garden Street
Bellingham, WA 98225

t: 360.650.1408
f: 360.650.1401

CLIENT: **ARIEL COURT DEVELOPMENT, INC**
BELLWETHER WAY, SUITE 211
BELLINGHAM, WA 98225

PROJECT LOCATION:

2285 DOUGLAS ROAD
FERNDAL, WA 98248

SHEET CONTENTS:

GENERAL NOTES

DWG #: **04031ASB3**
JOB #: **04031**
SCALE: **H:n/a V:n/a**

DATE:

5-10-06

SHEET:

C15 of 15

00361.015 1-28-08 AK