

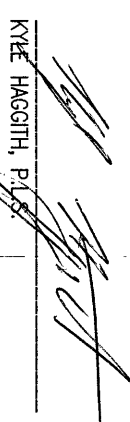
INDEX TABLE

1.	COVER SHEET
2.	EXISTING CONDITIONS
3.	EROSION CONTROL TESC NOTES & DETAILS
4.	COMPOSITE UTILITY PLAN
5.	SITE GRADING PLAN & ROAD SECTION
6.	STORM DRAINAGE PLAN AND PROFILE
7.	STORM DRAINAGE PLAN AND PROFILE
8.	STORM DRAINAGE PLAN AND PROFILE EAST
9.	STORM DRAINAGE PLAN AND PROFILE AND DETAILS
10.	WATER DISTRIBUTION PLAN AND PROFILE
11.	WATER AND SANITARY SEWER PLAN & PROFILE
12.	SANITARY SEWER AND WATER DETAILS
13.	CITY OF FERNDALE GENERAL REQUIREMENT NOTES



RAMON LLANOS, P.E.

SURVEYOR'S CERTIFICATION
I CERTIFY THAT THE LOCATIONS, ELEVATIONS, DEPTHS, AND AS-BUILT COMMENTS REFLECTING MATERIALS ACTUALLY USED DURING CONSTRUCTION ACCURATELY REFLECT EXISTING FIELD CONDITIONS AS DETERMINED BY ME OR UNDER MY DIRECT SUPERVISION ON THIS DATE: April, 27, 2016



JOB NO.:	9019
DWG. NAME:	
DESIGNED BY:	RL
DRAWN BY:	YC
CHECKED BY:	

OCT 21 2011

100

1
OF
13

	= PROPERTY CORNER		= EXIST UNDERGROUD POWER LINE
	= EXIST SD CATCH BASIN (TYPE 1)		= EXIST WATER LINE
	= EXIST SD CATCH BASIN (TYPE 2)		= EXIST SANITARY SEWER LINE
	= STORM DRAIN CATCH BASIN		= EXIST STORM DRAIN LINE
	= STORM DRAIN CATCH BASIN (TYPE 2)		= EXIST BLOCK WALL
	= EXIST SANITARY SEWER MANHOLE		= EXIST CONTOUR (INDEX)
	= EXIST SANITARY SEWER CLEANOUT		= STORM DRAIN LINE
	= EXIST SANITARY SEWER SERVICE		= SAN SEWER LINE
	= SANITARY SEWER SERVICE		= WATER LINE
	= SEWER CLEANOUT		= CONTOUR (NORMAL)
	= SEWER MANHOLE		= WATER VALVE
	= EXISTING WATER METER BOX		= FEET CONNECTION
	= EXISTING WATER VALVE		= THRUST BLOCK
	= EXISTING FIRE HYDRANT		= WATER METER
	= EXIST COPING ADAPTER		= FIRE HYDRANT
	= EXIST POWER/AID OR UTILITY POLE		= 11.25 BEND (M)
	= EXIST GUY WIRE		= 45 BEND (M)
	= EXIST GUY WIRE		= 90 BEND (F)
	= EXIST POWER METER/STRUCTURE		
	= EXIST POWER VAULT		
	= EXIST POWER BOX/HANDHOLD		
	= EXIST LIGHT POLE		
	= EXIST TV BOX		
	= EXIST TELEPHONE PEDESTAL		
	= EXIST TELEPHONE MANHOLE		
	= EXIST SIGN		
	= LANDSCAPE PER OFF STANDARDS		


[illegible]



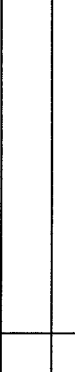
- RECORDS DELETED
LOT 204 AS DEDICATED ON PACIFIC INDUSTRIAL PARK SPECIFIC BINDING SITE PLAN No.
9, ACCORDING TO THE PLAT THEREOF, UNDER AUDITOR'S FILE No. 207504041,
RECORDS OF WHATCOM COUNTY, WASHINGTON.
- SURVEY NOTES:

2
OF 13

△	SMALL TALL 1	RL	06/19/16	JOB NO.:	9019
△				DWG. NAME:	
△				DESIGNED BY:	RL
△				DRAWN BY:	YC
△				CHECKED BY:	
NO.		BY	DATE		



LDES, INC.
5160 INDUSTRIAL PL. #108
FERNDALE, WA 98248
PHONE 360-383-0620
FAX 360-383-0639



LD&S, INC.
5160 INDUSTRIAL PL. #108
FERNDALE, WA 98248
PHONE 360-383-0620
FAX 360-383-0639

LDDES, INC.
DISTRIAL PI #108

JOB NO.: 9019

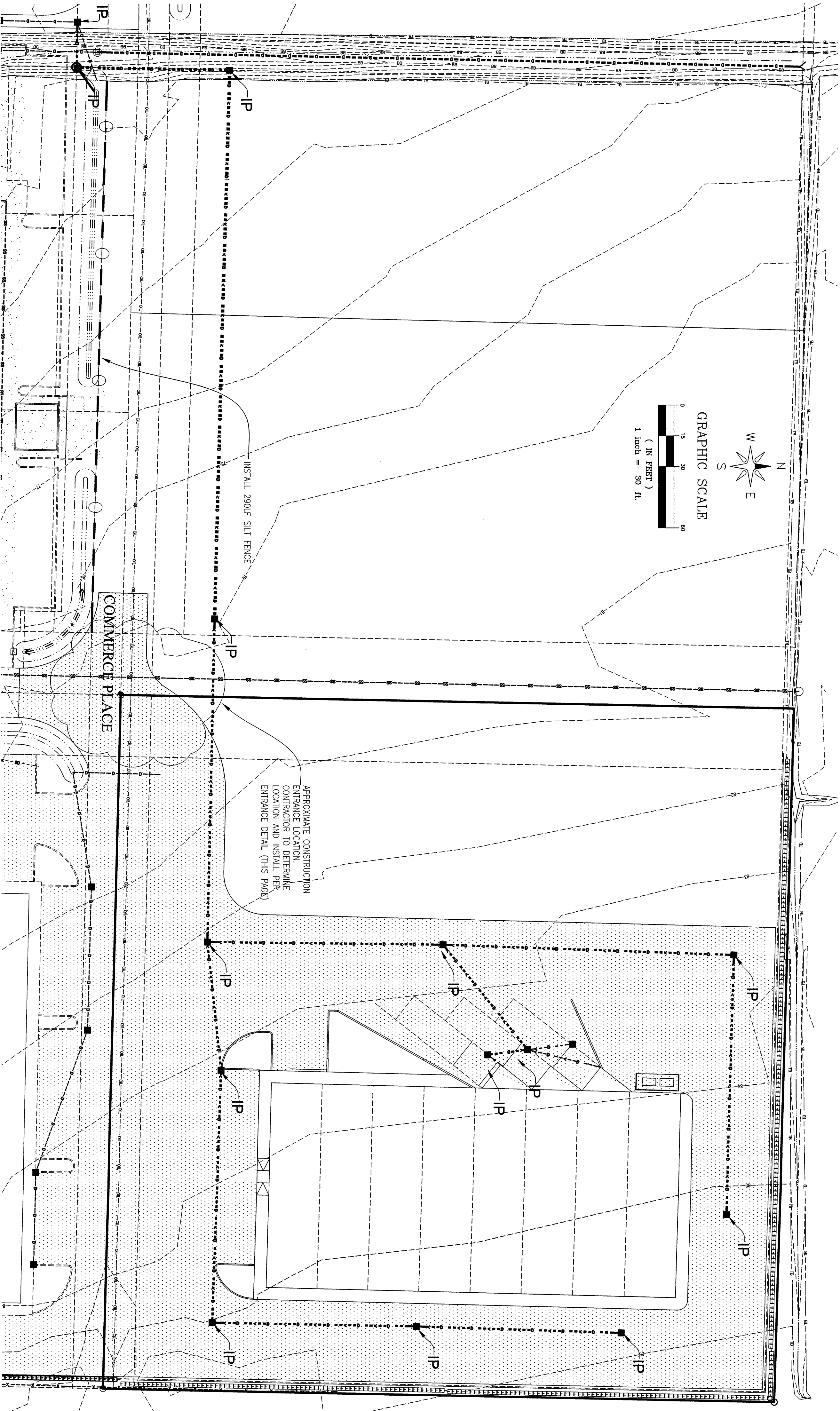
APPROVED

OCT 21 2016

BY S
CITY OF PERDUE

CHECKED BY:

YC

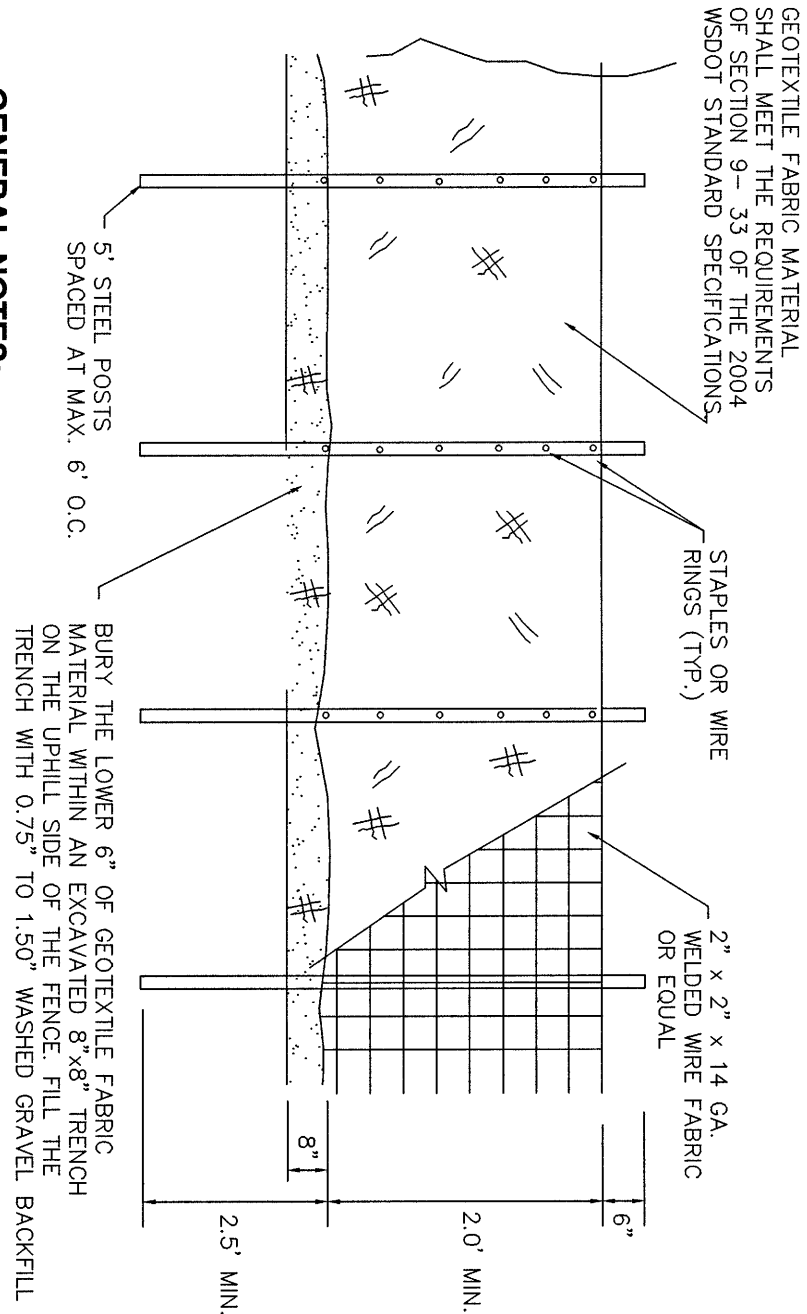


CITY OF FERNDALE TESC NOTES:

1. STABILIZATION & SEDIMENT TRAPPING. ALL EXPOSED SOILS SHALL BE STABILIZED BY SUITABLE APPLICATION OF BMP'S. FROM OCTOBER 1 TO APRIL 30, NO SOILS SHALL REMAIN UNEXPOSED FOR MORE THAN 2 DAYS. FROM MAY 1 TO SEPTEMBER 30, NO SOILS SHALL REMAIN EXPOSED FOR MORE THAN 7 DAYS. PRIOR TO LEAVING THE SITE, STORMWATER RUNOFF SHALL PASS THROUGH A SEDIMENT POND, TRAP OR OTHER APPROPRIATE BMP.
2. DELINEATE CLEARING & EASEMENT LIMITS. IN THE FIELD, STAKE AND FLAG CLEARING LIMITS AND/OR ANY EASEMENTS, SETBACKS, SENSITIVE/CRITICAL AREAS AND THEIR BUFFERS, TREES AND DRAINAGE COURSES.
3. PROTECTION OF ADJACENT PROPERTIES. PROPERTIES ADJACENT TO THE PROJECT SITE SHALL BE PROTECTED FROM SEDIMENT DEPOSITION OF SEDIMENT TRAPPING MEASURES. SEDIMENT POUNDS AND TRAPS, PERMITTED DUES, STORMWATER RUNOFF SHALL BE PROTECTED FROM SEDIMENT DEPOSITION OF SEDIMENT TRAPPING MEASURES. FIRST STEP IN GRADING. THESE BMP'S SHALL BE FUNCTIONAL BEFORE LAND DISTURBING ACTIVITIES TAKE PLACE. EARTH STRUCTURES SUCH AS DAMS, DICES AND DIVERSIONS SHALL BE SEEDED AND MULCHED ACCORDING TO THE TIMING INDICATED IN NO. 1 ABOVE.
5. CUT & FILL SLOPES. CUT AND FILL SLOPES SHALL BE DESIGNED AND CONSTRUCTED IN A MANNER THAT WILL MINIMIZE EROSION. IN ADDITION, SLOPES SHALL BE STABILIZED IN ACCORDANCE WITH NO. 1 ABOVE.
6. CONTROLLING OFF-SITE EROSION. PROPERTIES AND WATERWAYS DOWNSTREAM FROM THE DEVELOPMENT SITES SHALL BE PROTECTED FROM EROSION DUE TO INCREASES IN THE VOLUME, VELOCITY, AND PEAK FLOW RATE OF STORMWATER RUNOFF FROM THE PROJECT SITE.
7. STABILIZATION OF TEMPORARY CONVEYANCE CHANNELS & OUTLETS. ALL TEMPORARY ON-SITE CONVEYANCE CHANNELS SHALL BE DESIGNED, CONSTRUCTED AND STABILIZED TO PREVENT EROSION FROM THE EXPECTED VELOCITY OF FLOW FROM A 2-YEAR 24-HOUR FREQUENCY STORM FOR THE DEVELOPED CONDITION. STABILIZATION ADEQUATE TO PREVENT EROSION OF OUTLETS, ADJACENT STREAM BANKS, SLOPES AND DOWNSTREAM REACHES SHALL BE PROVIDED AT THE OUTLETS OF ALL CONVEYANCE SYSTEMS.
8. STORM DRAIN INLET PROTECTION. ALL STORM DRAIN INLETS MADE OPERABLE DURING CONSTRUCTION SHALL BE PROTECTED SO THAT STORMWATER RUNOFF SHALL NOT ENTER THE CONVEYANCE SYSTEM WITHOUT FIRST BEING FILTERED OR OTHERWISE TREATED TO REMOVE SEDIMENT.
9. UNDERGROUND UTILITY CONSTRUCTION. THE CONSTRUCTION OF UNDERGROUND UTILITY LINES SHALL BE SUBJECT TO THE FOLLOWING CRITERIA, WHERE FEASIBLE, NO MORE THAN 500 FEET OF TRENCH SHALL BE OPENED AT ONE TIME, WHERE CONSISTENT WITH SAFETY AND SPACE CONSIDERATIONS, EXCAVATED MATERIAL SHALL BE PLACED ON THE UPHILL SIDE OF TRENCHES, AND TRENCH DEWATERING DEVICES SHALL DISCHARGE INTO A SEDIMENT TRAP OR SEDIMENT POND.
10. CONSTRUCTION ACCESS ROUTES. WHEREVER CONSTRUCTION VEHICLE ACCESS ROUTES INTERSECT PAVED ROADS, PROVISIONS MUST BE MADE TO MINIMIZE THE TRANSPORT OF SEDIMENT (MUD) ONTO THE PAVED ROAD. IF SEDIMENT IS TRANSPORTED ONTO A ROAD SURFACE, THE ROADS SHALL BE CLEANED THOROUGHLY AT THE END OF EACH DAY. SEDIMENT SHALL BE REMOVED FROM ROADS BY SHOVELING OR SWEEPING AND BE TRANSPORTED TO A CONTROLLED SEDIMENT DISPOSAL AREA. STREET WASHING SHALL BE ALLOWED ONLY AFTER SEDIMENT IS REMOVED IN THIS MANNER.
11. REMOVAL OF TEMPORARY BMP'S. ALL TEMPORARY EROSION AND SEDIMENT CONTROL BMP'S SHALL BE REMOVED WITHIN 30 DAYS AFTER FINAL SITE STABILIZATION IS ACHIEVED OR AFTER TEMPORARY BMP'S ARE NO LONGER NEEDED. TRAPPED SEDIMENT SHALL BE REMOVED OR STABILIZED ON SITE. DISTURBED SOIL AREAS RESULTING FROM REMOVAL SHALL BE PERMANENTLY STABILIZED.
12. DEWATERING CONSTRUCTION SITES. DEWATERING DEVICES SHALL DISCHARGE INTO A SEDIMENT TRAP OR SEDIMENT POND.
13. CONTROL OF POLLUTANTS OTHER THAN SEDIMENT ON CONSTRUCTION SITES. ALL POLLUTANTS OTHER THAN SEDIMENT THAT OCCUR ON-SITE DURING CONSTRUCTION SHALL BE HANDLED AND DISPOSED OF IN A MANNER THAT DOES NOT CAUSE CONTAMINATION OF STORMWATER.
14. MAINTENANCE. ALL TEMPORARY AND PERMANENT EROSION AND SEDIMENT CONTROL BMP'S SHALL BE MAINTAINED AND REPAIRED AS NEEDED TO ASSURE CONTINUED PERFORMANCE OF THEIR INTENDED FUNCTION.
15. FINANCIAL LIABILITY. PERFORMANCE BONDING, OR OTHER APPROPRIATE FINANCIAL INSTRUMENTS, SHALL BE REQUIRED FOR ALL PROJECTS TO ENSURE COMPLIANCE WITH THE APPROVED TESC PLAN.

IP = INLET PROTECTION

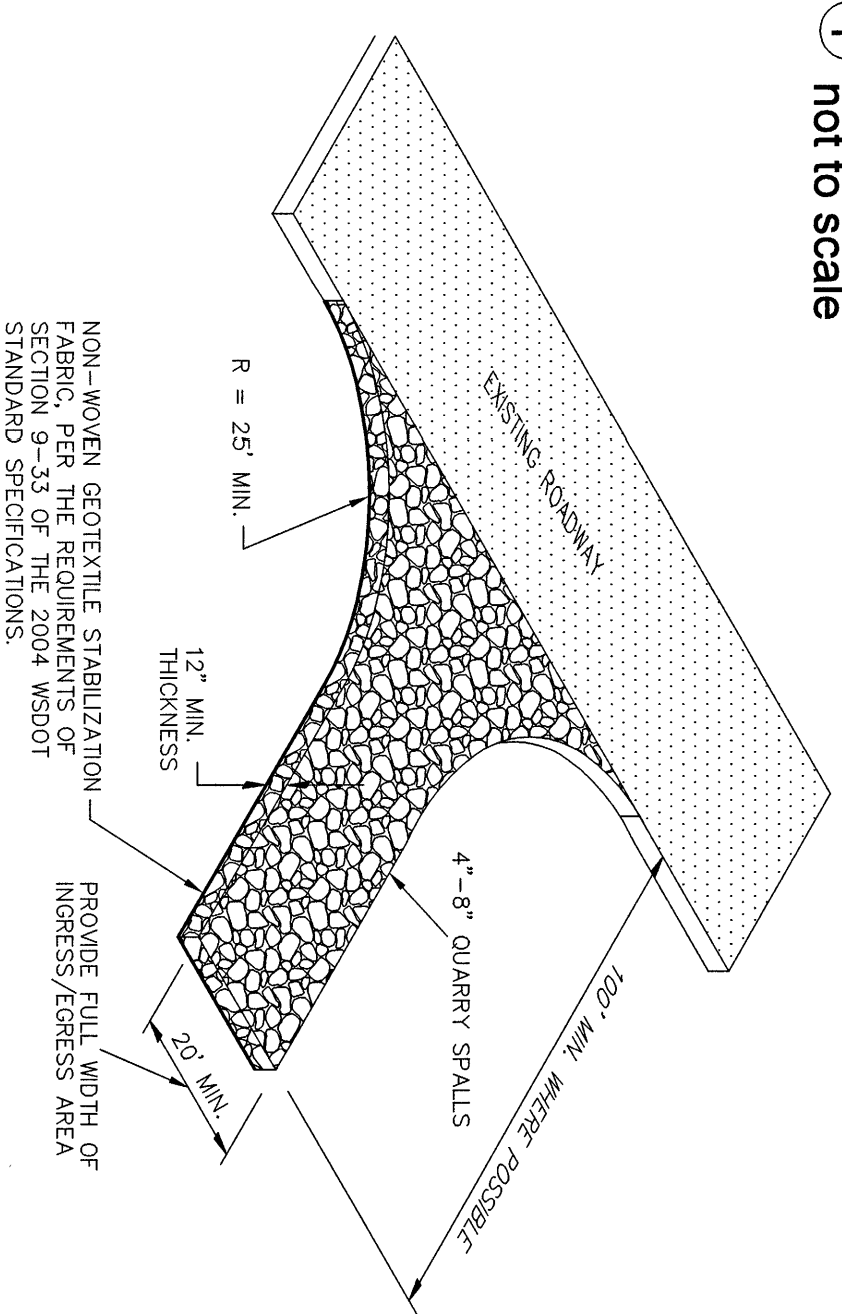
CALL 2 BUSINESS DAYS BEFORE YOU DIG
1-800-424-5555
UTILITIES UNDERGROUND LOCATION CENTER



GENERAL NOTES:

1. ANY DAMAGE TO FENCING SHALL BE REPAIRED IMMEDIATELY.
2. IF CONCENTRATED FLOWS ARE OBSERVED UPHILL OF THE FENCE, THEN THE WATER MUST BE INTERCEPTED AND CONVERTED TO A FULLY-FUNCTIONING SEDIMENT TRAP, POND, OR CONVEYANCE SYSTEM.
3. IT IS IMPORTANT TO PERIODICALLY CHECK THE UPHILL SIDE OF FENCING FOR SIGNS OF CLOGGING. IF CLOGGING OCCURS, THE FENCE WILL ACT AS A BARRIER TO FLOW AND WILL CAUSE CHANNELIZATION PARALLEL TO THE FENCE. TO REMEDY THIS, THE CONTRACTOR SHALL REPLACE THE FENCE AND/OR REMOVE THE TRAPPED SEDIMENT.
4. SILT FENCING SHALL BE CONSTRUCTED DIRECTLY AFTER CLEARING AND GRUBBING IS COMPLETE. THE FENCE SHALL ONLY BE REMOVED WHEN CONSTRUCTION OF FINISHED AREAS HAS BEEN COMPLETED AND REMOVED AFTER OUTLETS ARE IN PLACE. THE SILT FENCING SHALL BE RECONSTRUCTED.

1 SILT FENCE DETAIL (BASED ON FERNDALE ST-10)
not to scale



GENERAL NOTES:

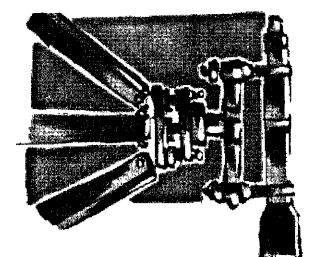
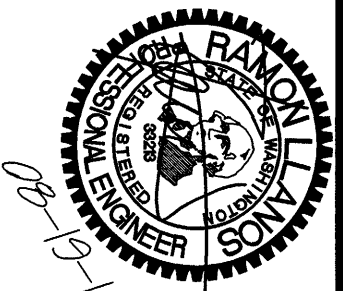
1. IF THE ENTRANCE IS NOT PREVENTING SEDIMENT FROM BEING TRACKED ONTO SURROUNDING AREAS, THE ENTRANCE SHALL BE REPAIRED IMMEDIATELY. THE CONTRACTOR SHALL BE RESPONSIBLE FOR THE MAINTENANCE OF THE ENTRANCE TO USED. THIS MAY INCLUDE STREET SWEEPING OR UPSIZING THE DIMENSIONS OF THE ENTRANCE.
2. ANY SEDIMENT THAT IS TRACKED ONTO PAVEMENT SHALL BE REMOVED IMMEDIATELY BY SWEEPING. THE SEDIMENT COLLECTED BY SWEEPING SHALL BE REMOVED OR STABILIZED ON-SITE. THE PAVEMENT SHALL NOT BE CLEANED BY WASHING. EXCEPT WHEN SWEEPING IS INEFFECTIVE AND THERE IS A THREAT TO PUBLIC SAFETY. IF IT IS NECESSARY TO WASH, THE WASHING SHALL BE DONE IN A MANNER THAT DOES NOT CAUSE EROSION. THE SEDIMENT SHALL BE CONVERTED INTO THE SWAMP OR POND.

2 QUARRY SPALL CONSTRUCTION ENTRANCE DETAIL
not to scale

EROSION AND SEDIMENT CONTROL GENERAL NOTES:

1. EROSION CONTROL METHODS AND MATERIALS SHALL MEET THE REQUIREMENTS OF SECTION 8-01 OF THE 2014 WSDOT/APWA STANDARD SPECIFICATIONS, THE REQUIREMENTS SET FORTH IN VOLUME II OF THE "STORMWATER MANAGEMENT MANUAL FOR WESTERN WASHINGTON" BY THE WASHINGTON STATE DEPARTMENT OF ECOLOGY, CURRENT EDITION, WITH THE CITY OF FERNDALE DEVELOPMENT STANDARDS, THE PROJECT SWPPP AND THIS PLAN, WITH THE MOST EFFECTIVE REQUIREMENTS TAKING PRECEDENCE. THE CONTRACTOR SHALL FOLLOW RECOMMENDATIONS MADE BY SUPPLIERS AND MANUFACTURERS FOR ALL MATERIALS AND EQUIPMENT USED.
2. THE CONTRACTOR SHALL TAKE ALL PRECAUTIONS TO PREVENT SILTY STORMWATER FROM EXITS THE SITE. IF SILTY WATER STORMWATER IS OBSERVED, THE CONTRACTOR SHALL NOTIFY THE LOCAL JURISDICTION TO COORDINATE FURTHER EROSION CONTROL MEASURES, TO CONTROL THE EROSION AND SEDIMENT CONTROL PLAN, THAT MAY BE NECESSARY THROUGHOUT CONSTRUCTION AND UNTIL ALL ON-SITE SOILS HAVE BEEN STABILIZED.
4. AT THE END OF ALL SITE CONSTRUCTION, THE CONTRACTOR SHALL FLUSH OUT ALL DEBRIS FROM THE STORM SYSTEM INSTALLED ON-SITE. MATERIAL FLUSHED FROM THE STORM SYSTEM SHALL BE DISPOSED OF BY THE CONTRACTOR AT AN APPROVED DISPOSAL SITE. FLUSHING OPERATION SHALL BE PERFORMED USING A VACUUM TRUCK.

REVISION	BY	DATE
NO		
1	RL	08/19/16
2		
3		
4		
5		
6		
7		
8		
9		
10		
11		
12		
13		
14		
15		



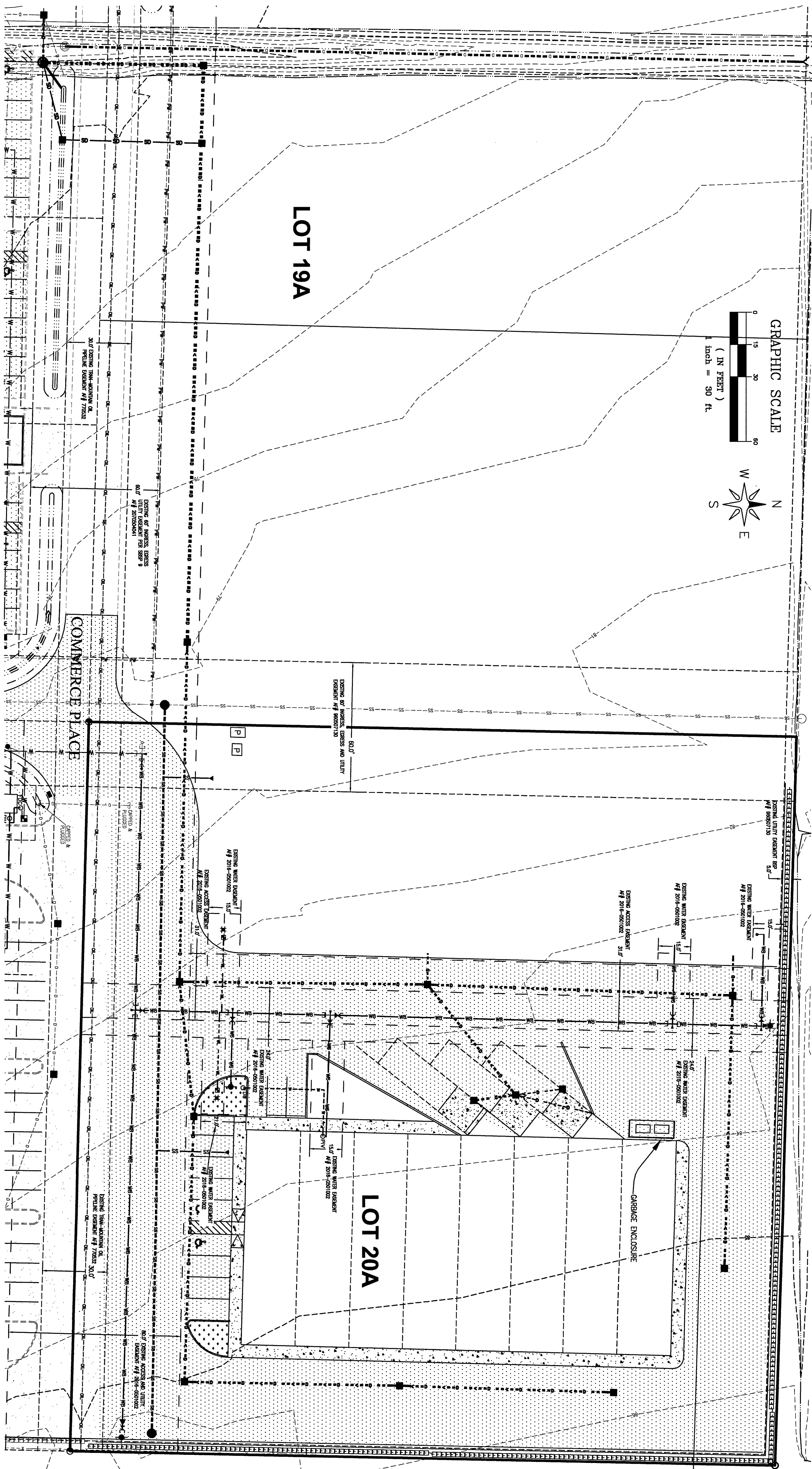
LDES, INC.
5160 INDUSTRIAL PL. #108
FERNDAL, WA 98248
PHONE 360-383-0620
FAX 360-383-0639

JOB NO.:	9019
DWG. NAME:	
DESIGNED BY:	RL
DRAWN BY:	YC
CHECKED BY:	

APPROVED
OCT 21 2016
CITY OF FERNDALE

PP LOT 20A
EROSION CONTROL
TESC NOTES & DETAILS
DESIGN INFORMATION

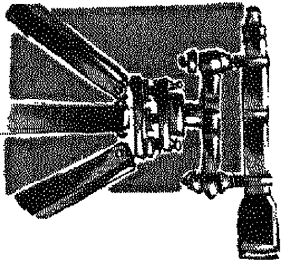
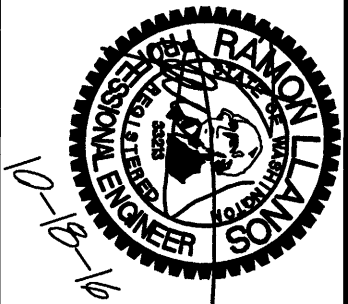
SHEET
3
OF
13



LEGEND:

- PROPERTY CORNER
- EXIST 3D CATCH BASIN (TYPE 1)
- EXIST 3D CATCH BASIN (TYPE 2)
- STORM DRAIN CATCH BASIN
- STORM DRAIN CATCH BASIN
- EXIST SANITARY SEWER MANHOLE
- EXIST SANITARY SEWER CLEANOUT
- EXIST SANITARY SEWER SERVICE
- ▲ SANITARY SEWER SERVICE
- SEWER CLEANOUT
- SEWER MANHOLE
- EXISTING WATER METER BOX
- EXISTING WATER VALVE
- EXISTING FIRE HYDRANT
- EXIST COUPLING ADAPTER
- EXIST POWER/LAND OR UTILITY POLE
- EXIST GUY POLE
- EXIST GUY WIRE
- EXIST POWER METER/STRUCTURE
- EXIST POWER VAULT
- EXIST POWER JBOX/HANDHOLD
- EXIST LIGHT POLE
- EXIST UTILITY POLE
- EXIST TV BOX
- EXIST TELEPHONE PEDestal
- EXIST TELEPHONE MANHOLE
- EXIST SIGN
- LANDSCAPE PER COF STANDARDS
- EXIST UNDERGROUND POWER
- EXIST WATER LINE
- EXIST SANITARY SEWER LINE
- EXIST STORM DRAIN LINE
- EXIST BLOCK WALL
- EXIST CONTOUR (INDEX)
- EXIST CONTOUR (NORMAL)
- SAN. SEWER LINE
- WATER LINE
- CONTOUR (INDEX)
- CONTOUR (NORMAL)
- WATER VALVE
- TEE CONNECTION
- THRUST BLOCK
- WATER METER
- FIRE HYDRANT
- 11.25' BEND (M)
- 45° BEND (M)
- 90° BEND (T)
- EXIST ASPHALT
- PARKING AREA
- ASPHALT

Δ	SUBMITAL 1	RL	08/19/16
Δ	SUBMITAL 2	RL	10/18/16
Δ			
Δ			
Δ			
Δ			
Δ			
Δ			
Δ	REVISION	BY	DATE

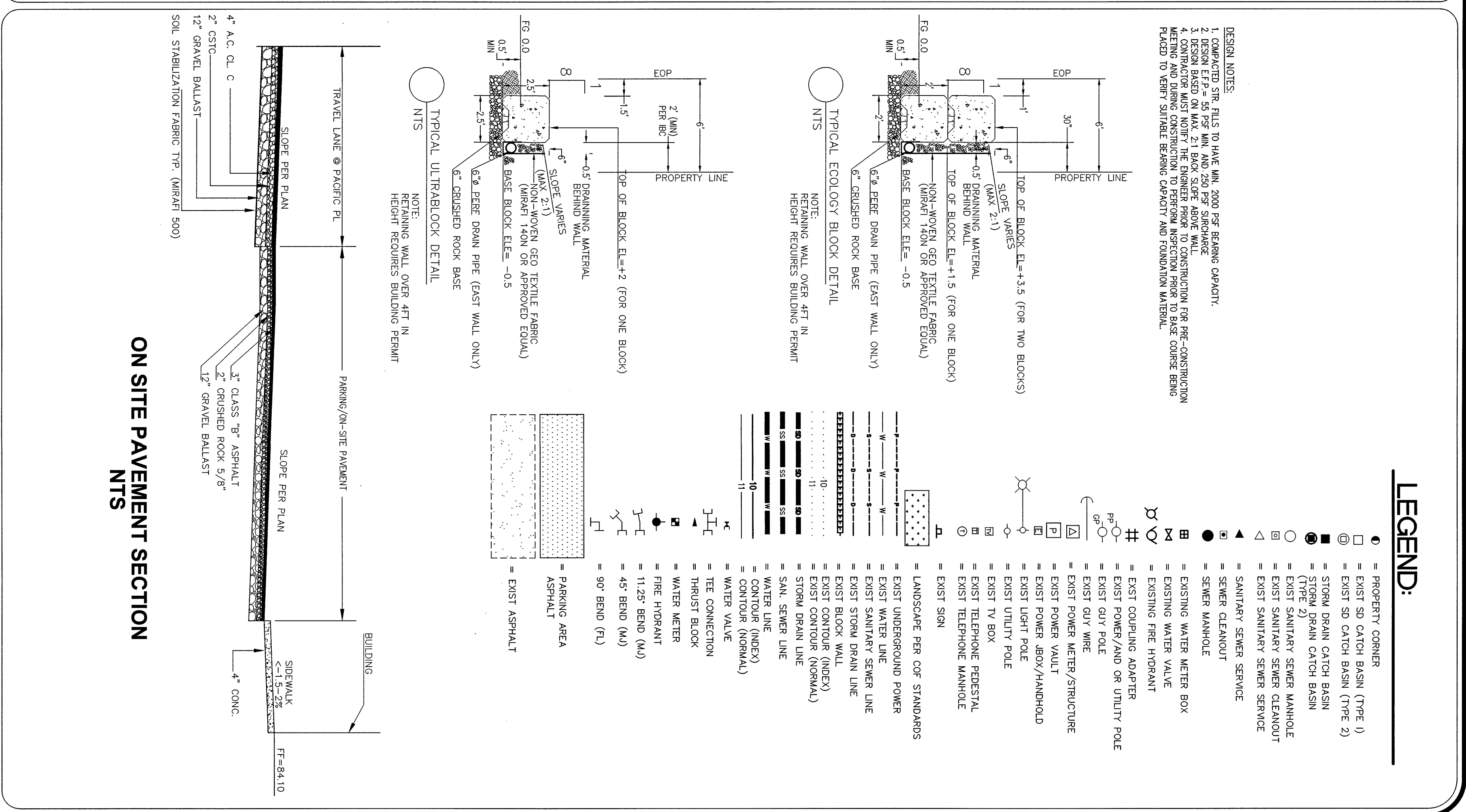
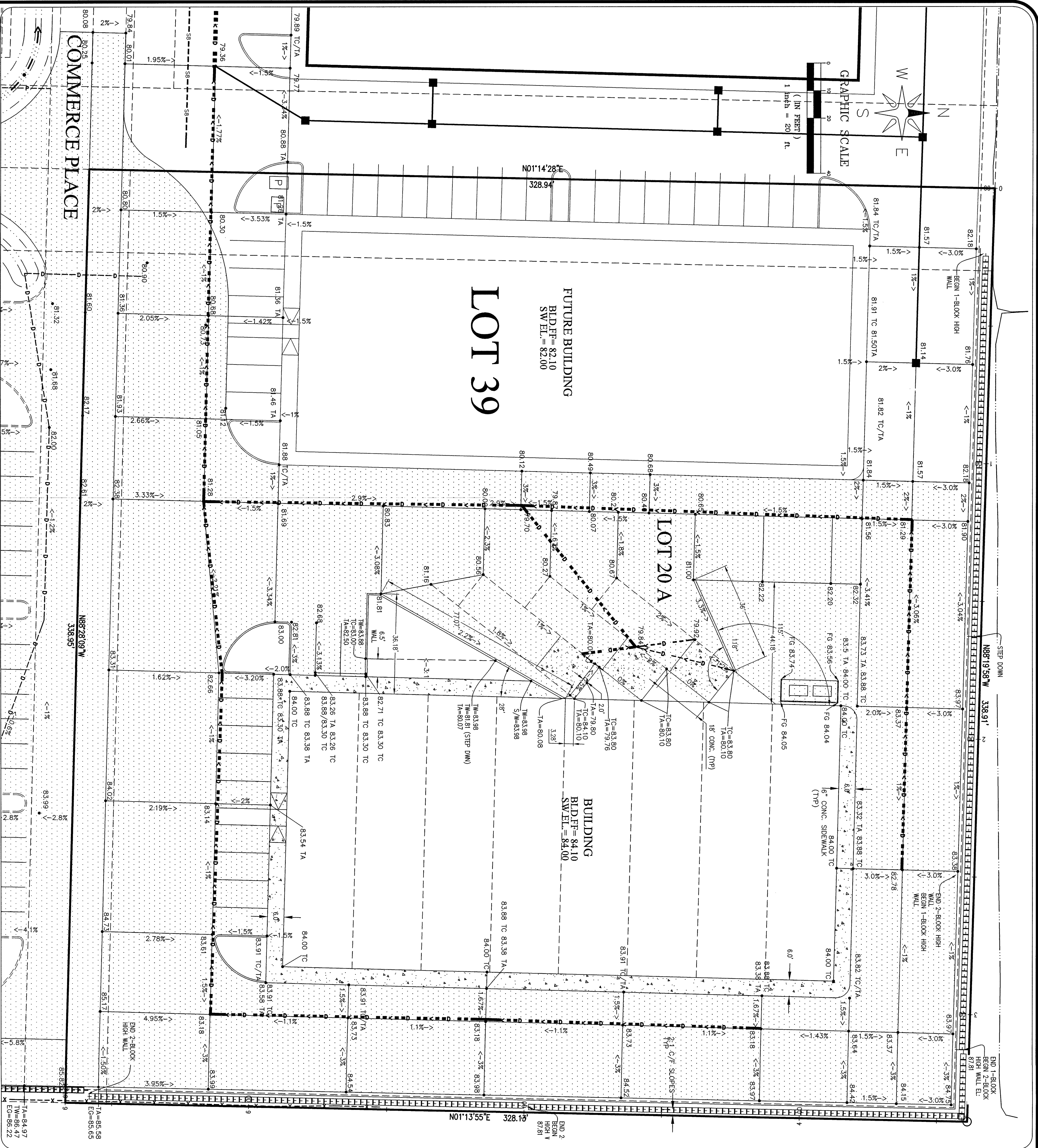


LDES, INC.
5160 INDUSTRIAL PL. #108
FERNDALE, WA 98248
PHONE 360-383-0620
FAX 360-383-0639

JOB NO.:	9019
DWG. NAME:	
DESIGNED BY:	RL
DRAWN BY:	YC
CHECKED BY:	

APPROVED
OCT 21 2016
BY
CITY OF FERNDALE

PIP LOT 20A
COMPOSITE UTILITY PLAN
RECORD DRAWINGS



DESIGN NOTES:
1. COMPACTED SPT PLUS TO HAVE MIN. 2000 PPF BEARING CAPACITY.
2. DESIGN EFP = 55 PPF MIN. AND 250 PPF SURCHARGE.
3. DESIGN BASED ON MAX. 21 BACK SLOPE ABOVE WALL.
4. CONSTRUCTION OF PRE-CONSTRUCTION FOR PRE-CONSTRUCTION MEETING AND DURING CONSTRUCTION TO PERFORM INSPECTION PRIOR TO BASE COURSE BEING PLACED TO VERIFY SUITABLE BEARING CAPACITY AND FOUNDATION MATERIAL.

LEGEND:

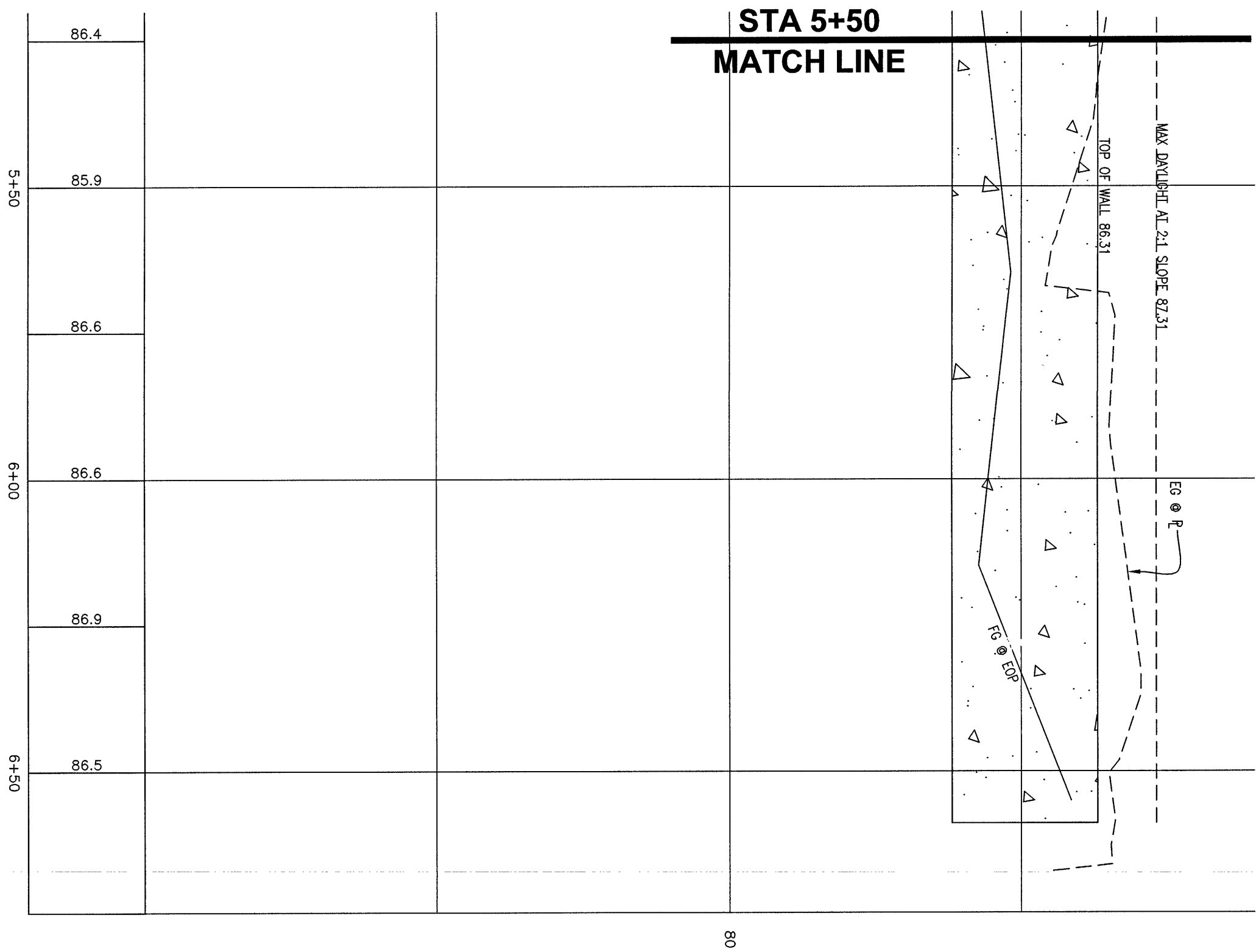
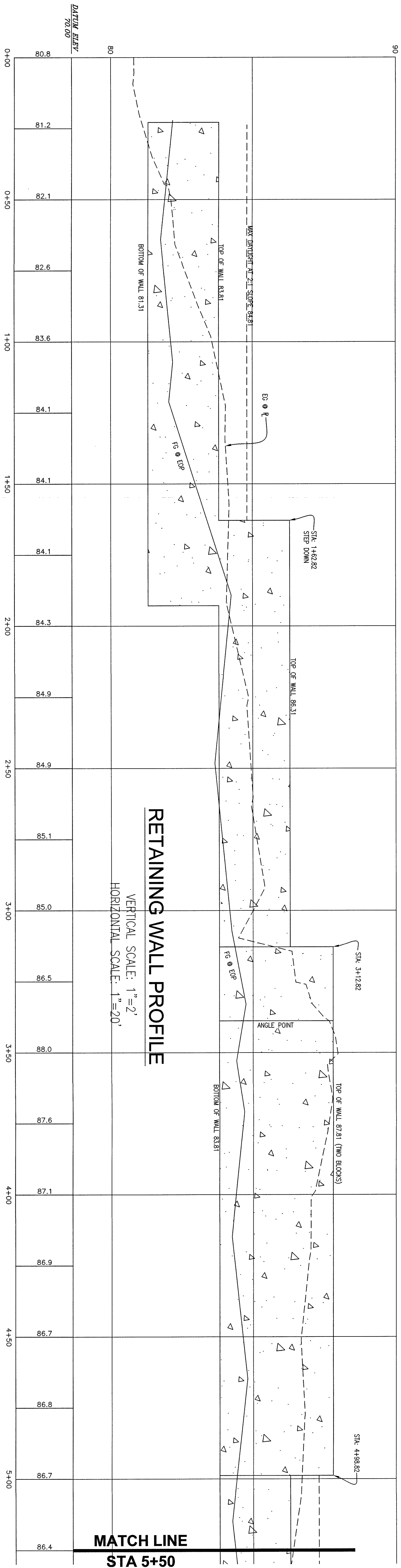
- PROPERTY CORNER
- EXIST 50 CATCH BASIN (TYPE 1)
- EXIST 50 CATCH BASIN (TYPE 2)
- STORM DRAIN CATCH BASIN
- EXIST SANITARY SEWER MANHOLE
- EXIST SANITARY SEWER CLEANOUT
- EXIST SANITARY SEWER SERVICE
- SANITARY SEWER SERVICE
- SEWER CLEANOUT
- SEWER MANHOLE
- EXISTING WATER METER BOX
- EXISTING WATER VALVE
- EXISTING FIRE HYDRANT
- EXIST COUPLING ADAPTER
- EXIST POWER/AND OR UTILITY POLE
- EXIST GUY WIRE
- EXIST POWER METER/STRUCTURE
- EXIST POWER BOX/HANDHOLD
- EXIST LIGHT POLE
- EXIST UTILITY POLE
- EXIST TV BOX
- EXIST TELEPHONE PEDESTAL
- EXIST TELEPHONE MANHOLE
- EXIST SIGN
- LANDSCAPE PER CIP STANDARDS
- EXIST UNDERGROUND POWER
- EXIST WATER LINE
- EXIST SANITARY SEWER LINE
- EXIST STORM DRAIN LINE
- EXIST BLOCK WALL
- EXIST CONTOUR (INDEX)
- EXIST CONTOUR (NORMAL)
- STORM DRAIN LINE
- SAN. SEWER LINE
- WATER LINE
- CONTOUR (INDEX)
- CONTOUR (NORMAL)
- WATER VALVE
- THRUST BLOCK
- WATER METER
- FIRE HYDRANT
- 11.25° BEND (M)
- 45° BEND (M)
- 90° BEND (FL)
- PARKING AREA
- ASPHALT
- EXIST ASPHALT

Δ	SUBMITTAL 1	RL	08/19/16
Δ			
Δ			
Δ			
Δ			
Δ	REVISION	BY	DATE

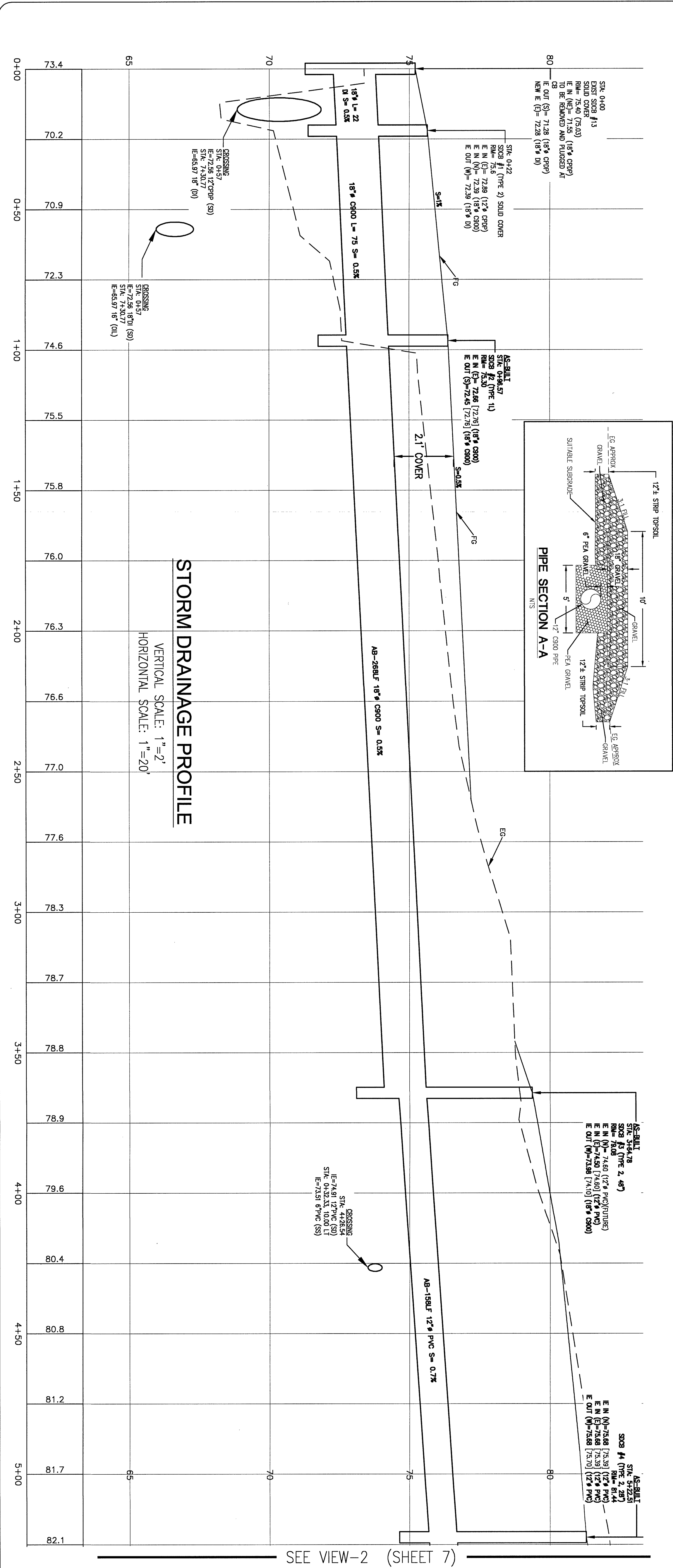
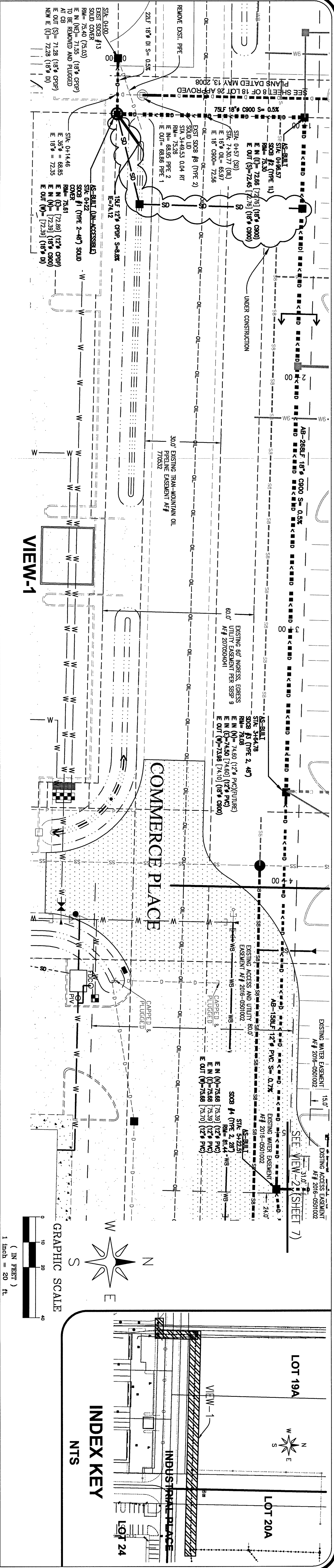
JOB NO.: 9019
DWG. NAME: 5160 INDUSTRIAL PL. #108
DESIGNED BY: FERRENDALE, WA 98248
DRAWN BY: PHONE 360-383-0620
CHECKED BY: FAX 360-383-0639

APPROVED
OCT 21 2016
BY: CITY OF FERRENDALE

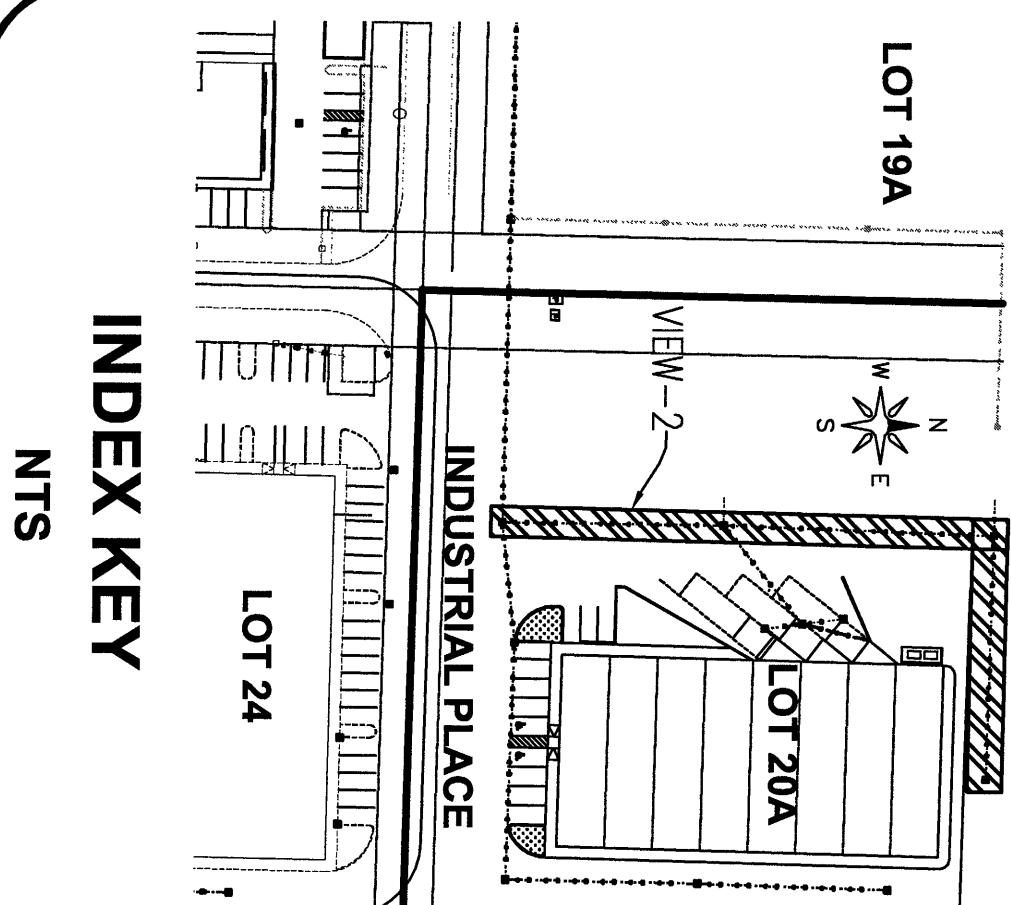
P/P LOT 20A
SITE GRADING PLAN & ROAD SECTION
DESIGN INFORMATION
SHEET 5 OF 13




NO.	REVISION	BY	DATE	JOB NO.: 9019	DWG. NAME: 5160 INDUSTRIAL PL. #108	DESIGNED BY: RL	DRAWN BY: YC	CHECKED BY:	APPROVED OCT 21 2006 CITY OF FERNDALE	RETAINING WALL PROFILE DESIGN INFORMATION	SHEET 5A OF 13
-----	----------	----	------	---------------	-------------------------------------	-----------------	--------------	-------------	---	--	-------------------------




NO.	REVISION	BY	DATE	JOB NO.: 9019	DWG. NAME: 5160 INDUSTRIAL PL. #108 FERRINDALE, WA 98248 PHONE 360-383-0620 FAX 360-383-0639	APPROVED	STORM DRAINAGE PLAN & PROFILE	SHEET 6 OF 13
1		RL	09/09/16					
2		RL	10/09/16					
3								
4								
5								
6								
7								
8								
9								
10								
11								
12								
13								
14								
15								
16								
17								
18								
19								
20								
21								
22								
23								
24								
25								
26								
27								
28								
29								
30								
31								
32								
33								
34								
35								
36								
37								
38								
39								
40								
41								
42								
43								
44								
45								
46								
47								
48								
49								
50								
51								
52								
53								
54								
55								
56								
57								
58								
59								
60								
61								
62								
63								
64								
65								
66								
67								
68								
69								
70								
71								
72								
73								
74								
75								
76								
77								
78								
79								
80								
81								
82								
83								
84								
85								
86								
87								
88								
89								
90								
91								
92								
93								
94								
95								
96								
97								
98								
99								
100								



△	SUBMITAL 1	RL	09/19/16
△	SUBMITAL 2	RL	10/18/16
△			
△			
△			
△			
△			
NO.	REVISION	BY	DATE



10-12-16



LD&S, INC.
5160 INDUSTRIAL P.L. #108
FERNDALE, WA 98248
PHONE 360-383-0620
FAX 360-383-0639

JOB NO.:	9019
DWG. NAME:	
DESIGNED BY:	RL
DRAWN BY:	YC
CHECKED BY:	

APPROVED

OCT 21 2016

BY _____

CITY OF SEASIDE

PIP LOT 20A

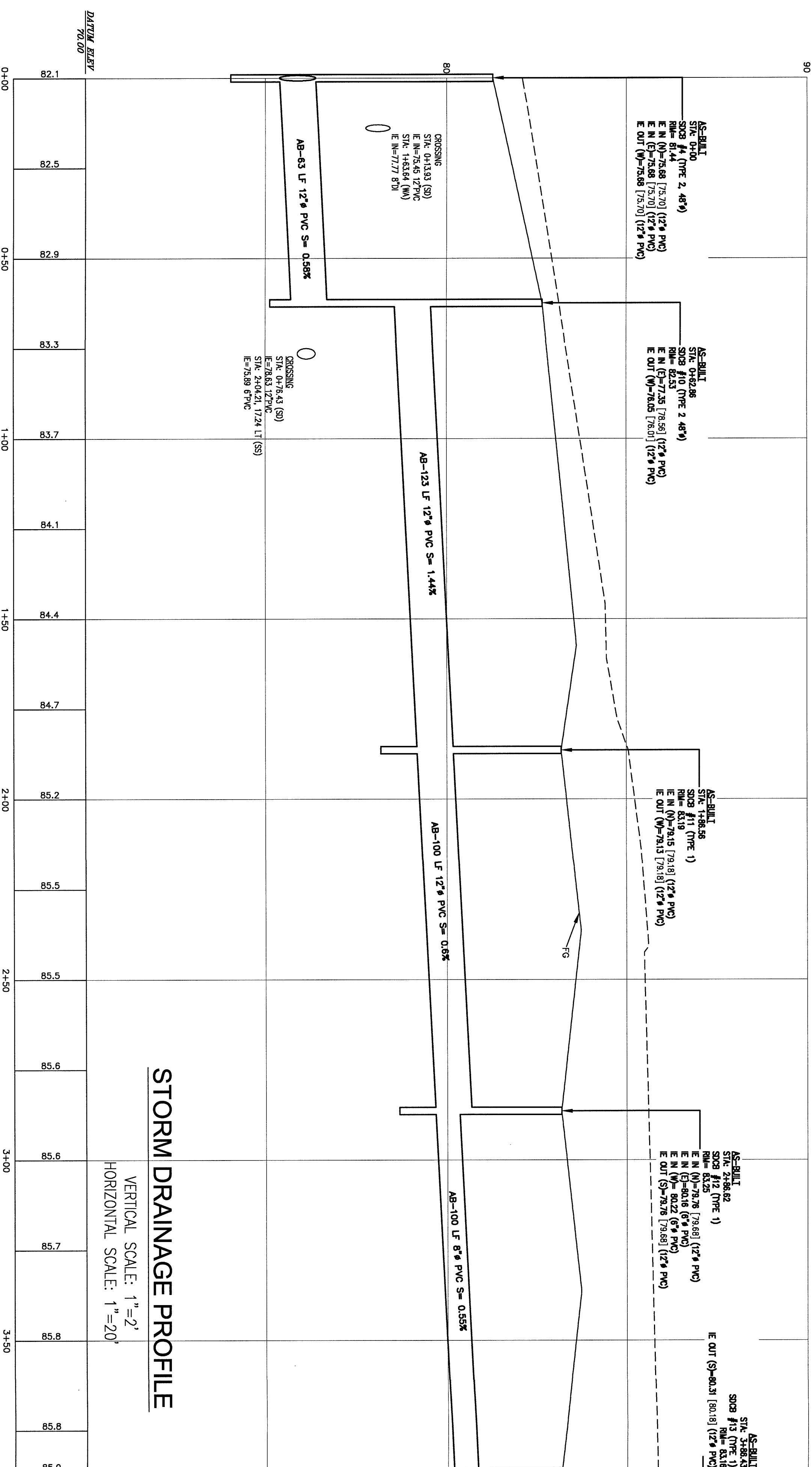
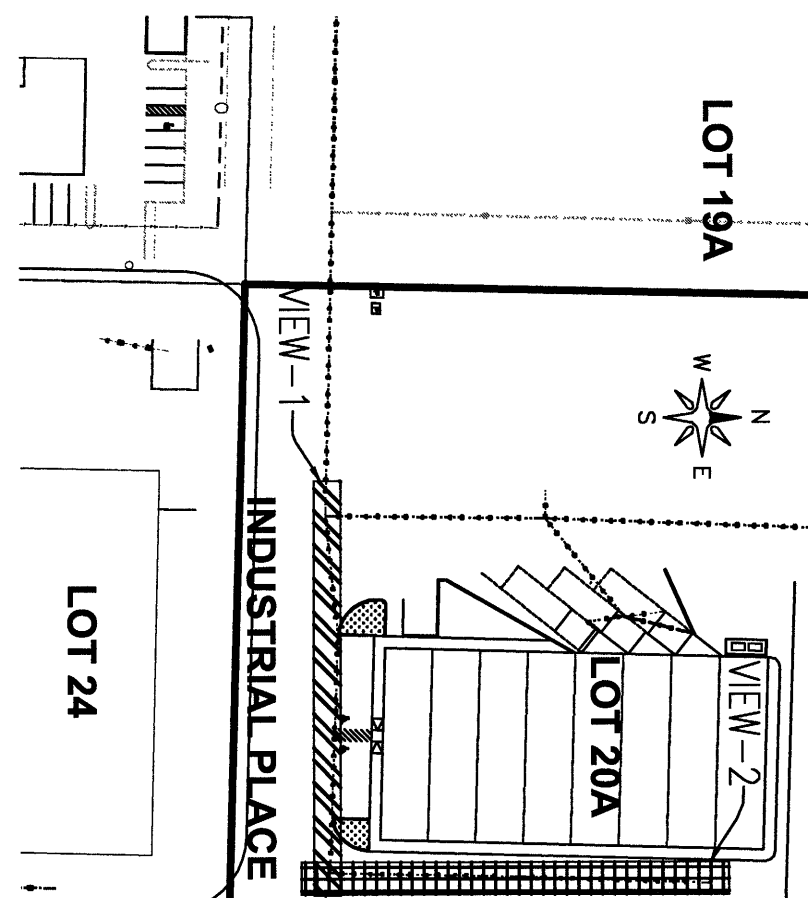
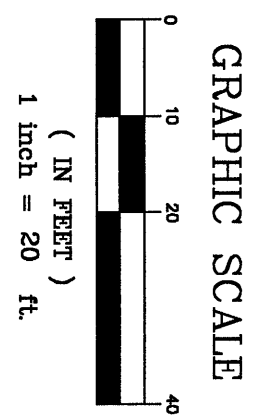
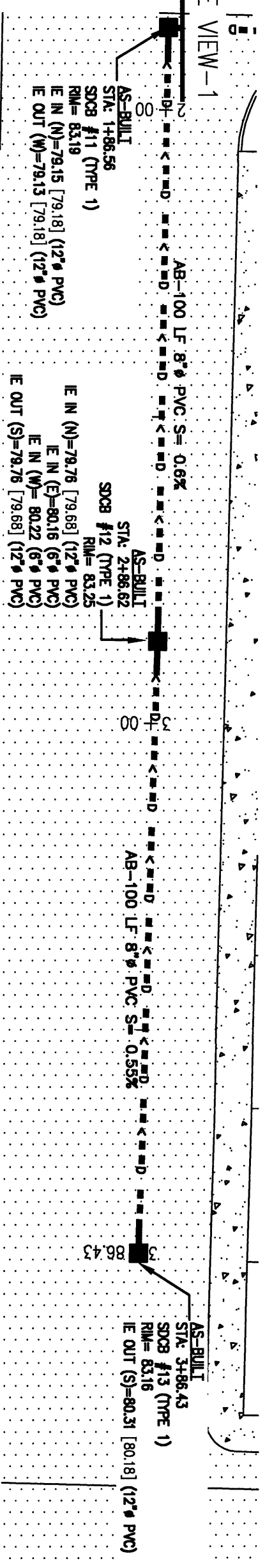
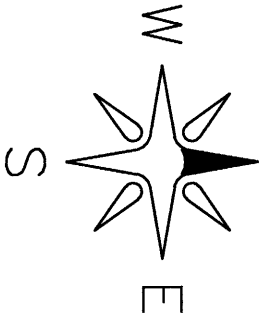
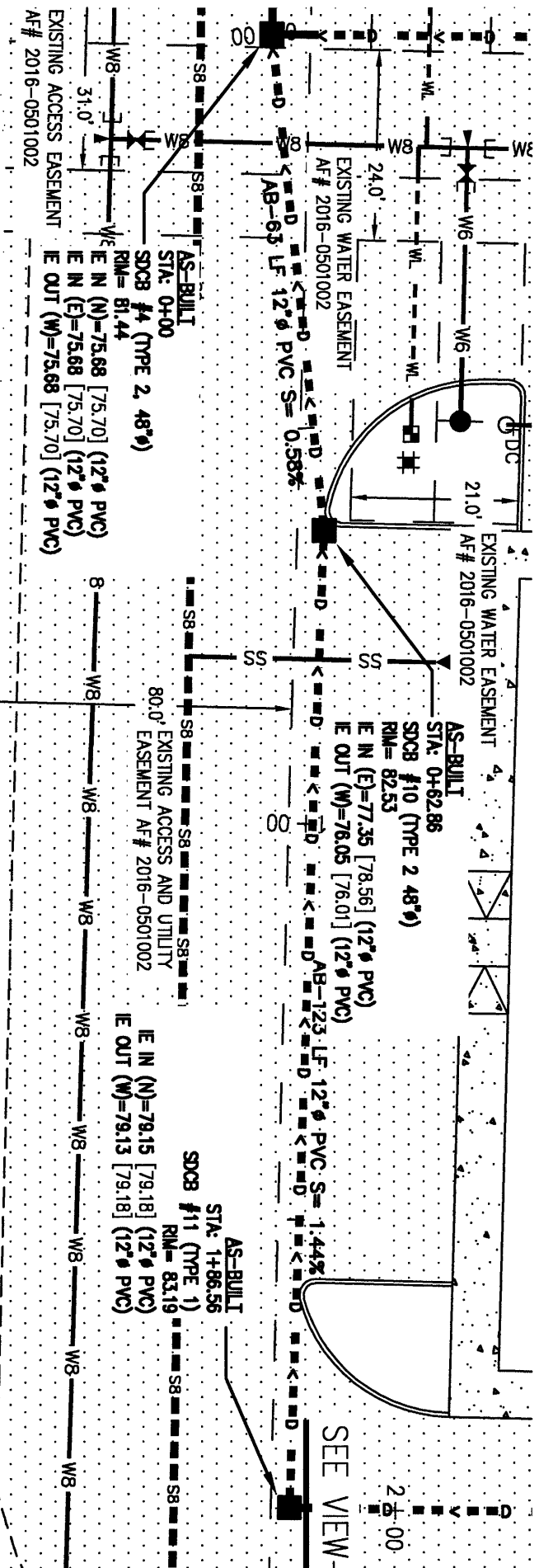
STORM DRAINAGE PLAN & PROFILE

RECORD DRAWINGS

SHEET

7

OF 13



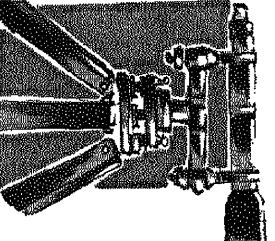
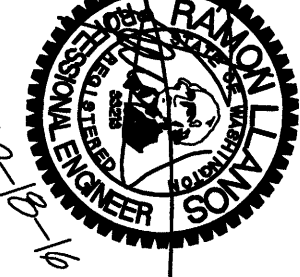
STORM DRAINAGE PROFILE

VERTICAL SCALE: 1"=2'
HORIZONTAL SCALE: 1"=20'

NO.	REVISION	BY	DATE
1		RL	08/09/16
2		RL	10/09/16
3			
4			
5			
6			
7			
8			
9			
10			

SUBMITAL 1	RL	08/09/16
SUBMITAL 2	RL	10/09/16

JOB NO.:	9019
DWG. NAME:	
DESIGNED BY:	RL
DRAWN BY:	YC
CHECKED BY:	

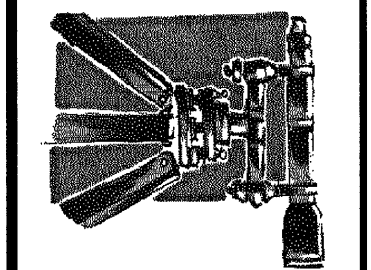


LDES, INC.
5160 INDUSTRIAL PL. #108
FERNDALE, WA 98248
PHONE 360-383-0620
FAX 360-383-0639

APPROVED
OCT 21 2016
BY: [Signature]
CITY OF FERNDALE

PIP LOT 20A
STORM DRAINAGE PLAN & PROFILE
EAST
RECORD DRAWINGS

Δ	SUBMITAL 1	SR	08/19/16
Δ	SUBMITAL 2	RL	10/19/16
Δ			
Δ			
Δ			
Δ			
Δ	REVISION	BY	DATE



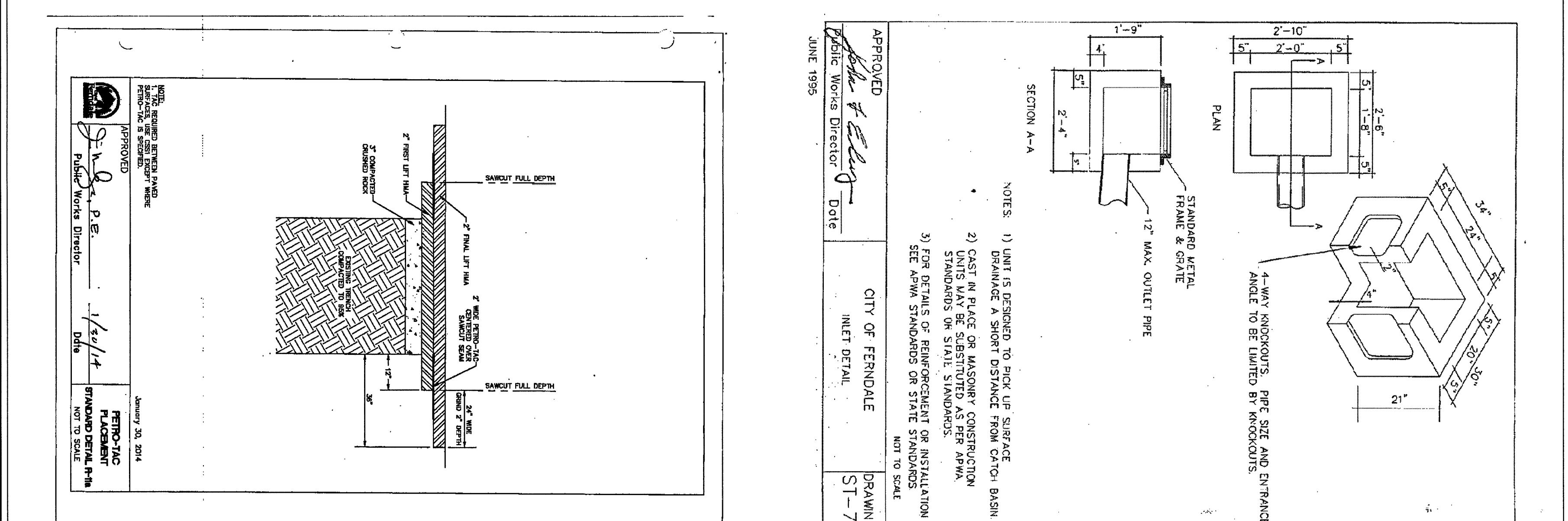
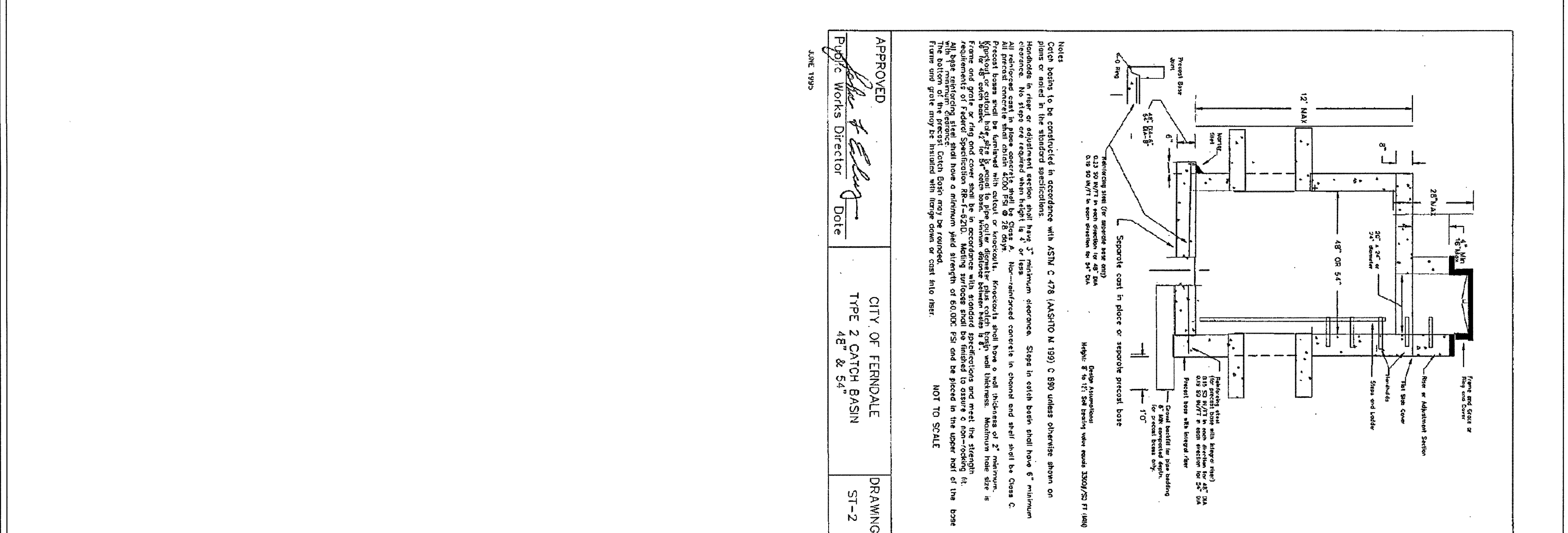
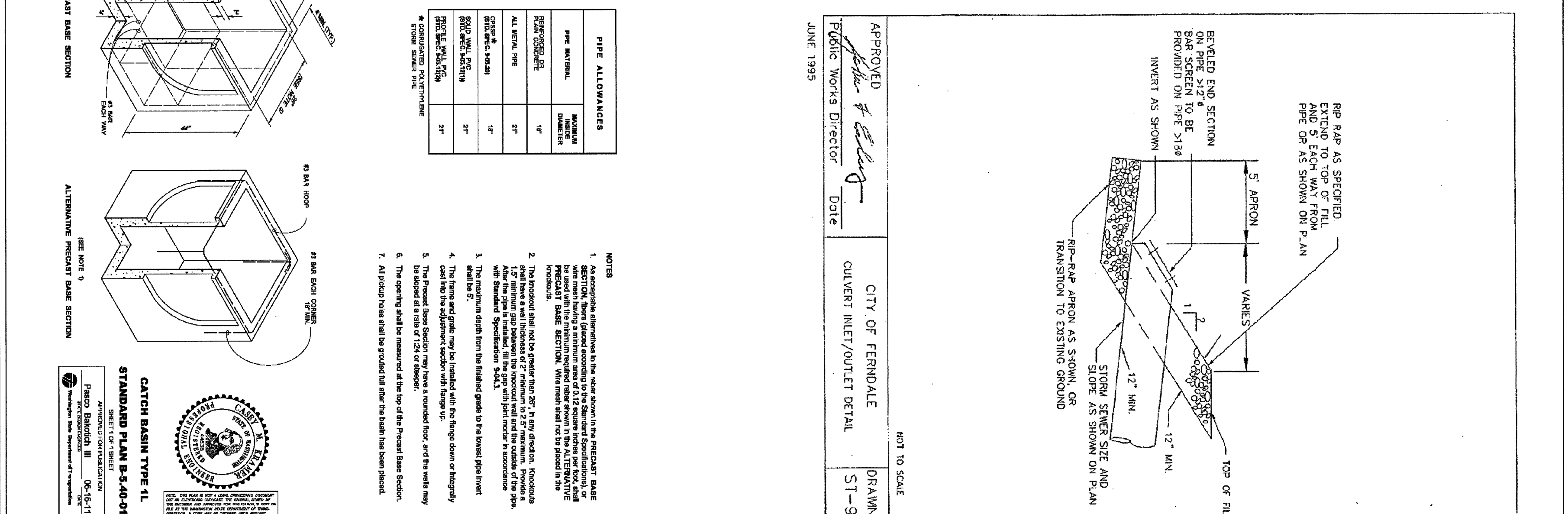
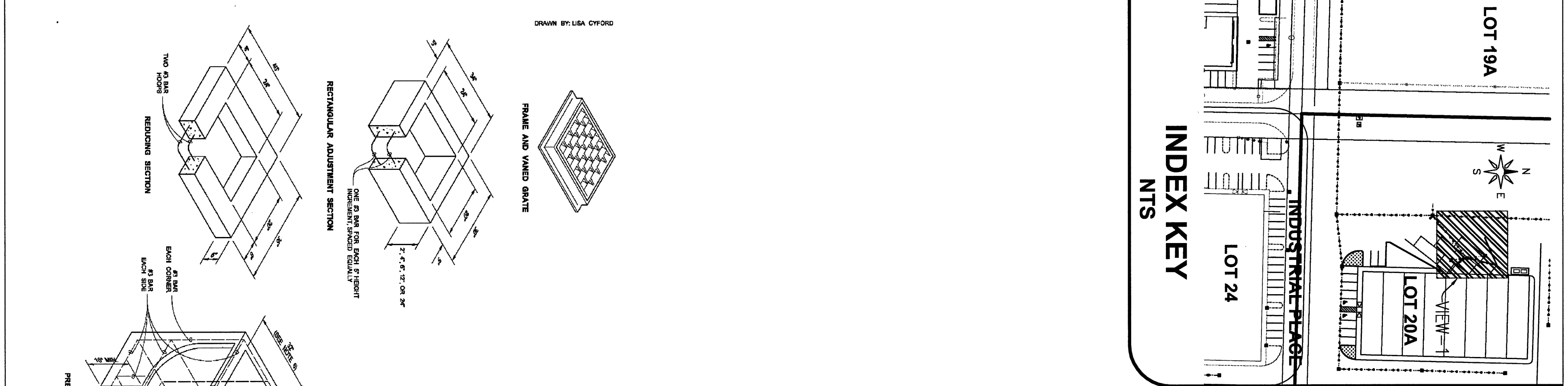
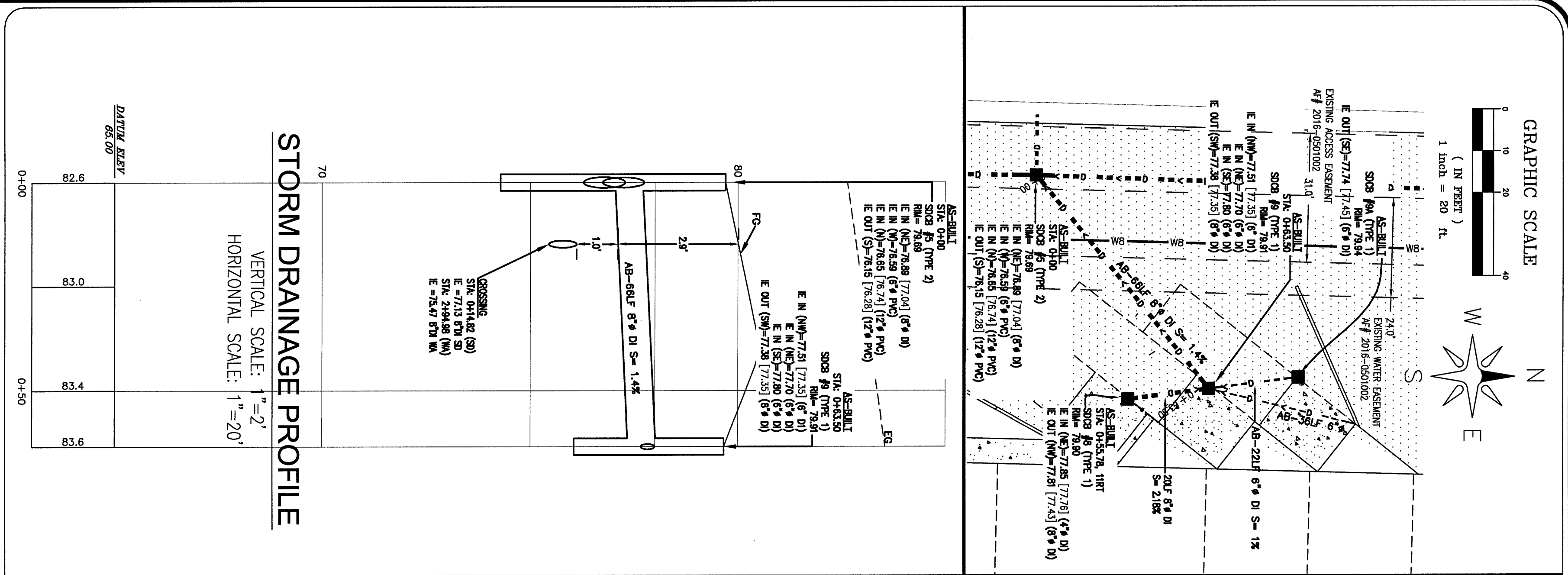
LDES, INC.
5160 INDUSTRIAL PL. #108
FERNDALE, WA 98248
PHONE 360-383-0620
FAX 360-383-0639

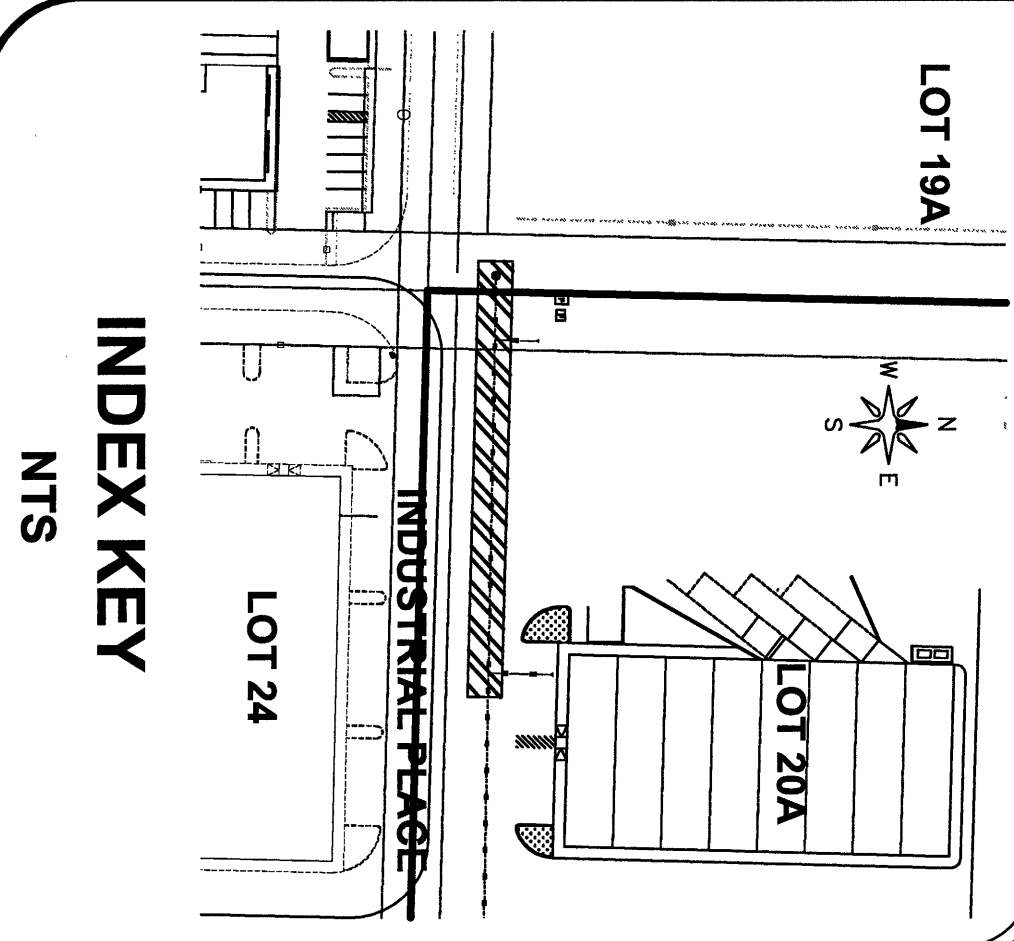
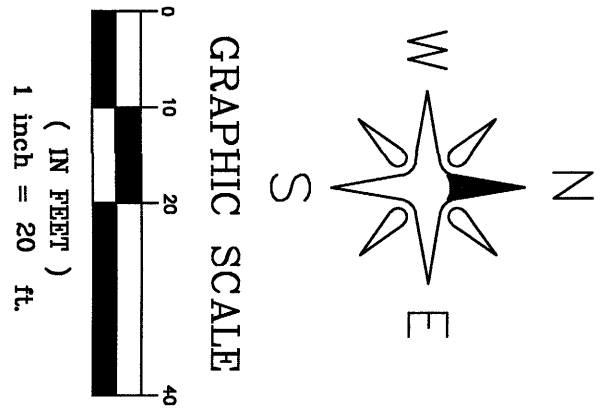
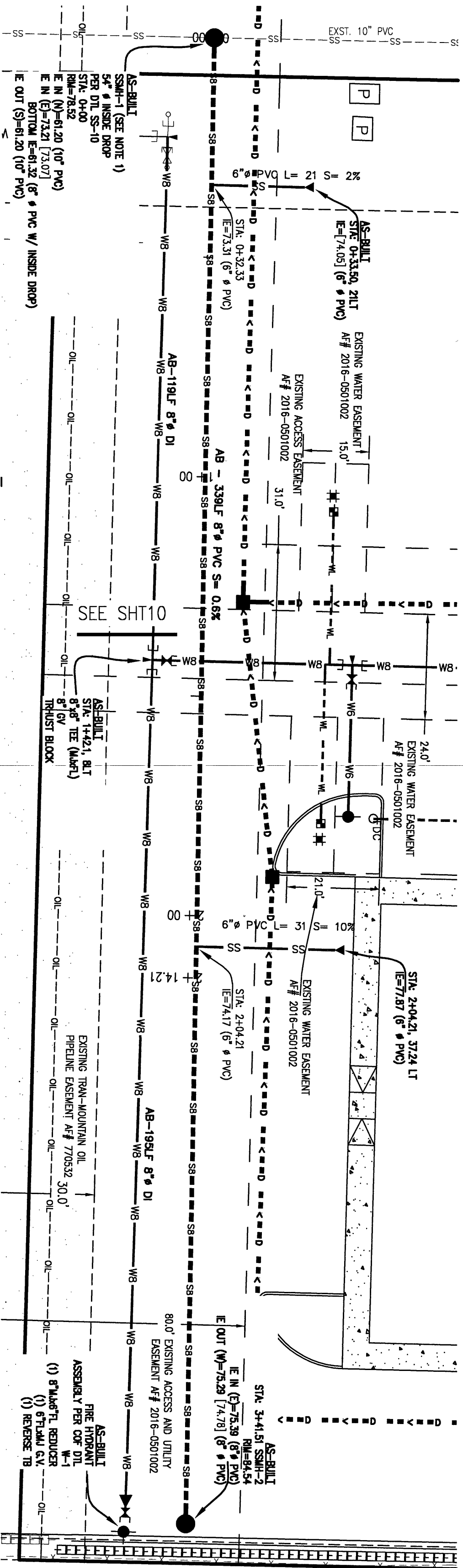
JOB NO.:	9019
DWG. NAME:	
DESIGNED BY:	RL
DRAWN BY:	YC
CHECKED BY:	

APPROVED
OCT 21 2015
BY: [Signature]
CITY OF FERNDALE

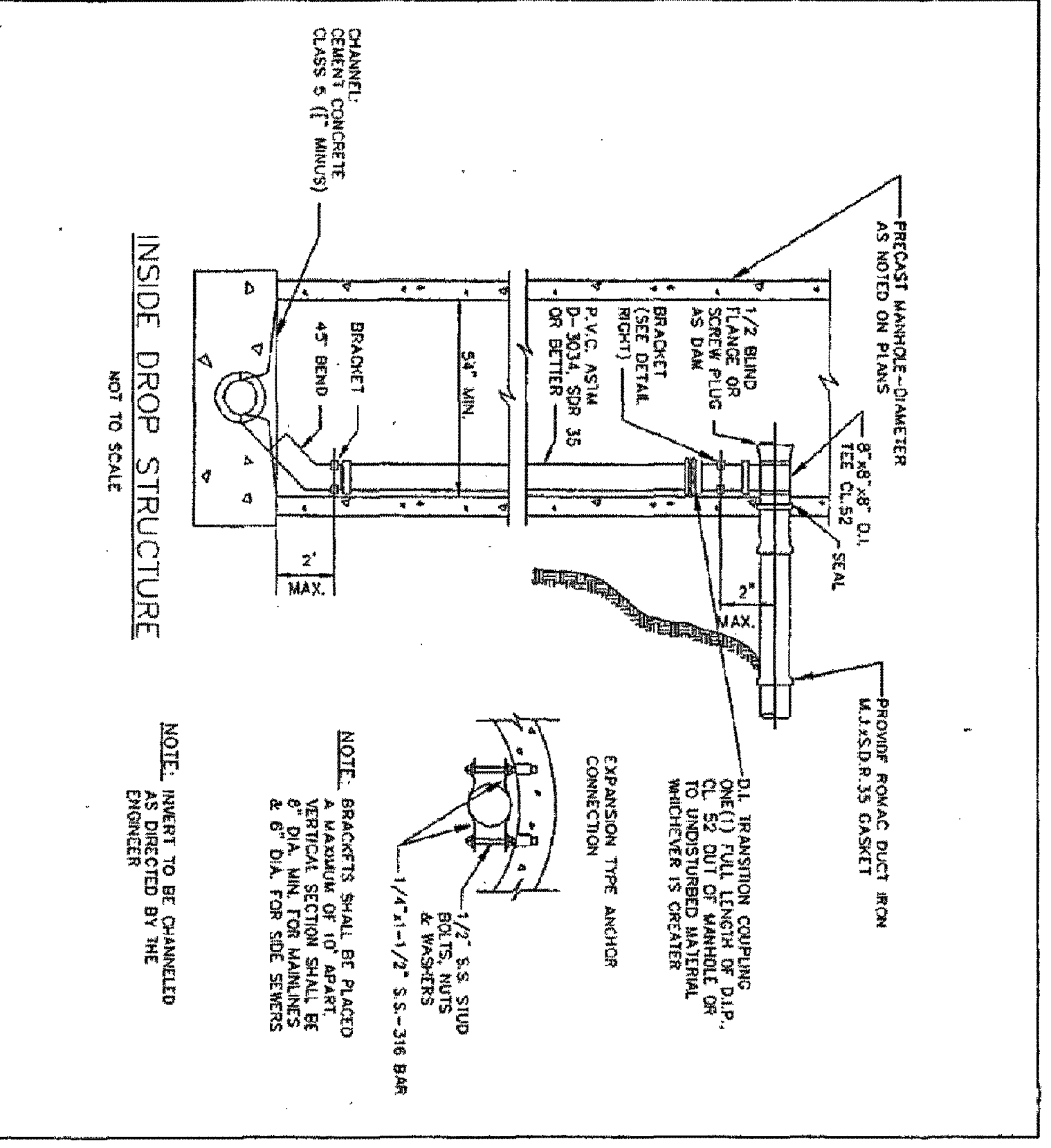
**STORM DRAINAGE PLAN & PROFILE CENTER
AND DETAILS
RECORD DRAWINGS**

SHEET
9
OF
13

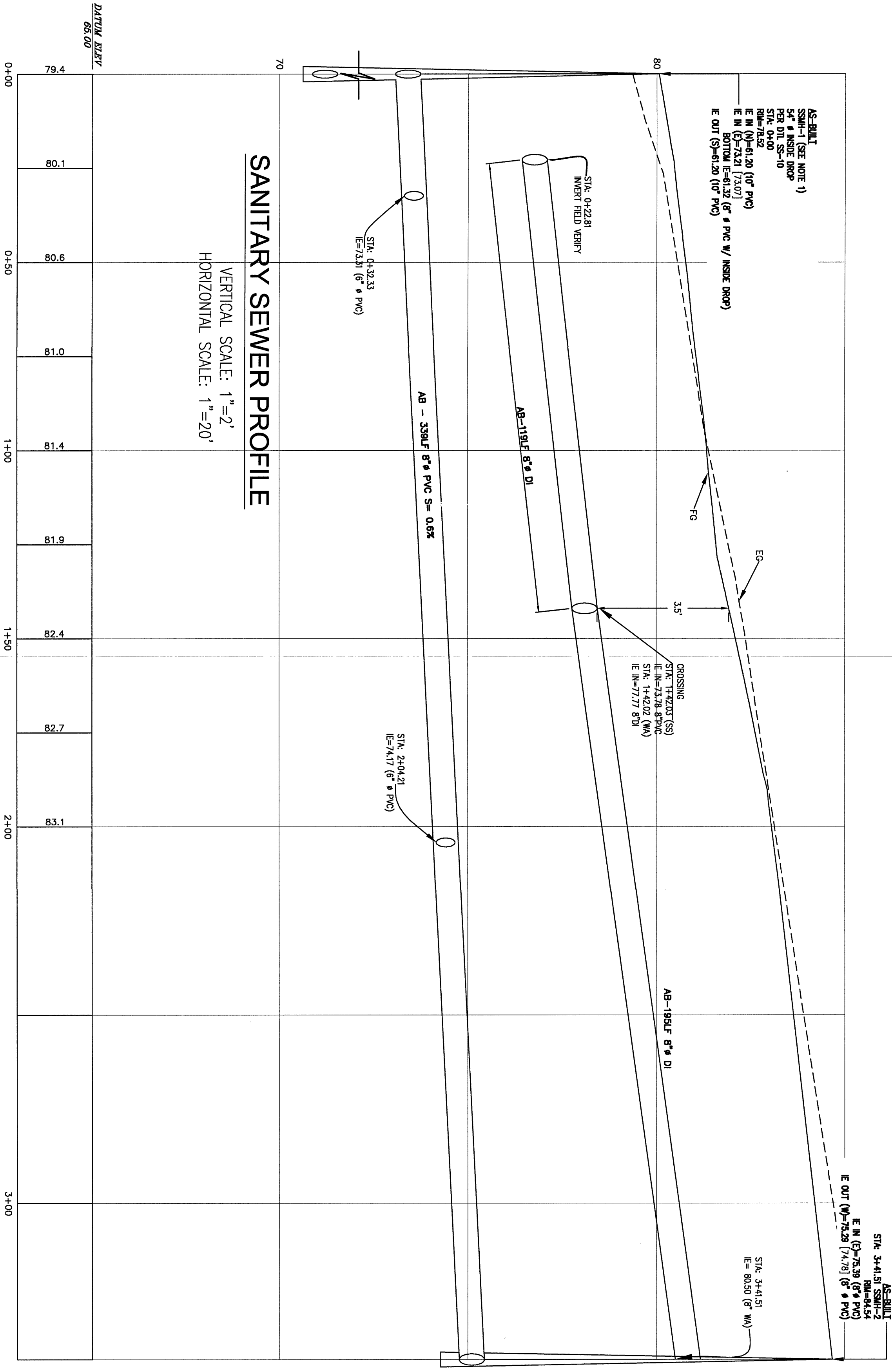




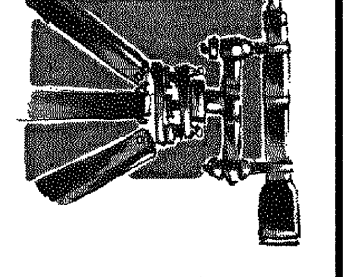
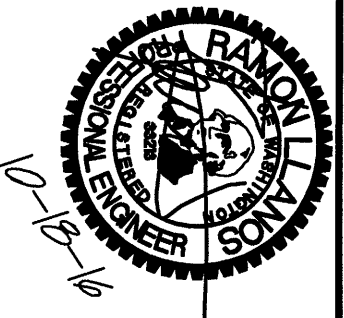
SEWER NOTE 1:
SEWER LINED IN INSIDE DROP PRE-CAST, PRE-CASTED STRUCTURE,
CUT-IN TO THE EXISTING 10-INCH SANITARY SEWER MANHOLE WITH DOUBLE
BELL COUPLER CONNECTIONS NO FEENOS.



SANITARY SEWER PROFILE



REVISION	BY	DATE	CHECKED BY:	YJC
NO.				
1	RL	08/15/16	JOB NO.:	9019
2	RL	10/16/16	DWG. NAME:	5160 INDUSTRIAL PL. #108
			DESIGNED BY:	FERNDAL, WA 98248
			DRAWN BY:	PHONE 360-383-0620
			CHECKED BY:	FAX 360-383-0639



LDES, INC.
5160 INDUSTRIAL PL. #108
FERNDAL, WA 98248
PHONE 360-383-0620
FAX 360-383-0639

APPROVED
OCT 9 T 2016
CITY OF FERNDAL

WATER AND SANITARY SEWER PLAN & PROFILE
RECORD DRAWINGS

SHEET
OF
13

JUNE 1995
20915E3A/55-10

