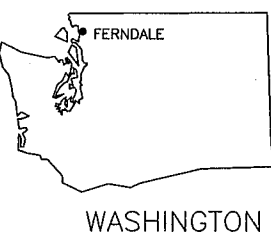
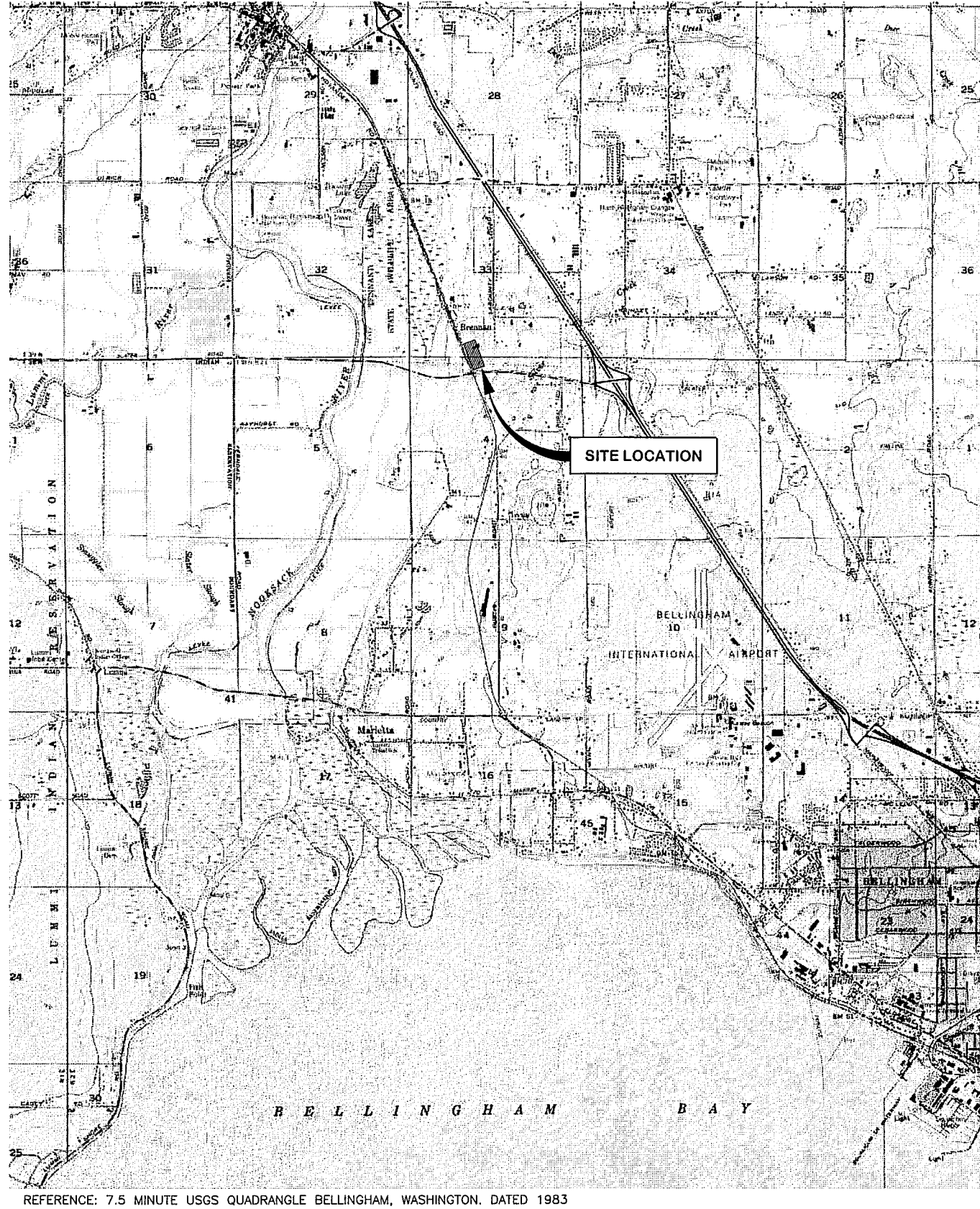


AS-BUILT PHASE 1 SITE STORMWATER IMPROVEMENTS

1524 SLATER ROAD
FERNDALE INTERMODAL YARD
FERNDALE, WASHINGTON



DRAWING INDEX

SHEET NO.	DRAWING TITLE
1	TITLE SHEET, SITE LOCATION MAP, AND DRAWING INDEX
2	GENERAL NOTES, LEGEND, SYMBOLS, AND ABBREVIATIONS
3	SITE PLAN
4	LAYOUT PLAN SOUTH
5	LAYOUT PLAN NORTH (PHASE 2 CONSTRUCTION)
6	GRADING AND DRAINAGE PLAN SOUTH
7	GRADING AND DRAINAGE PLAN NORTH (PHASE 2 CONSTRUCTION)
8	TEMPORARY, EROSION, AND SEDIMENT CONTROL PLAN
9	DETAILS

APPROVED

JAN 03 2014

BY *[Signature]* P.E.
CITY OF FERNDALE

CALL
TWO BUSINESS DAYS
BEFORE YOU DIG
1-800-424-5555
UTILITIES UNDERGROUND LOCATION CENTER



PREPARED BY
FARALLON CONSULTING, L.L.C.
176 5th Avenue Northwest
Issaquah, WA 98027

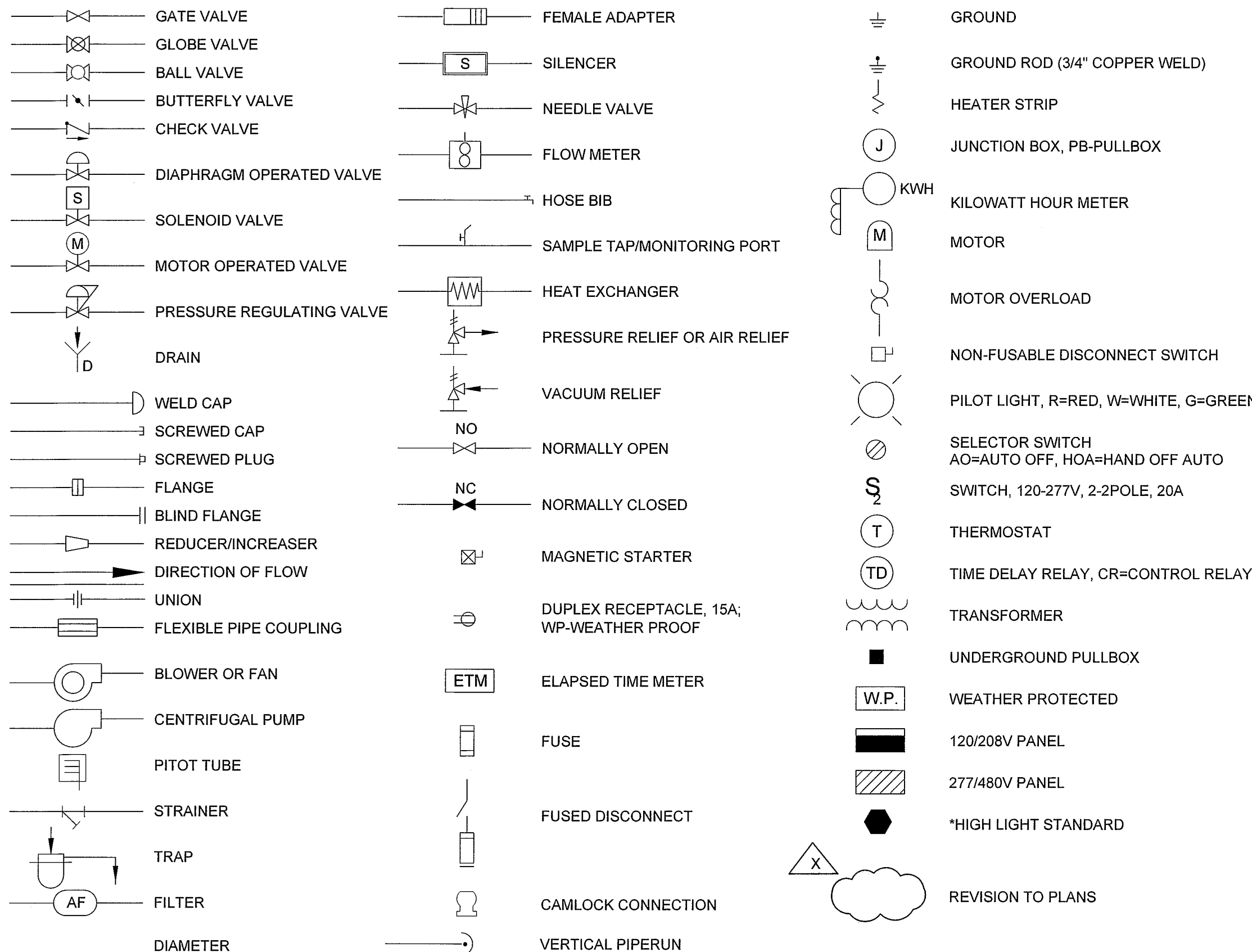
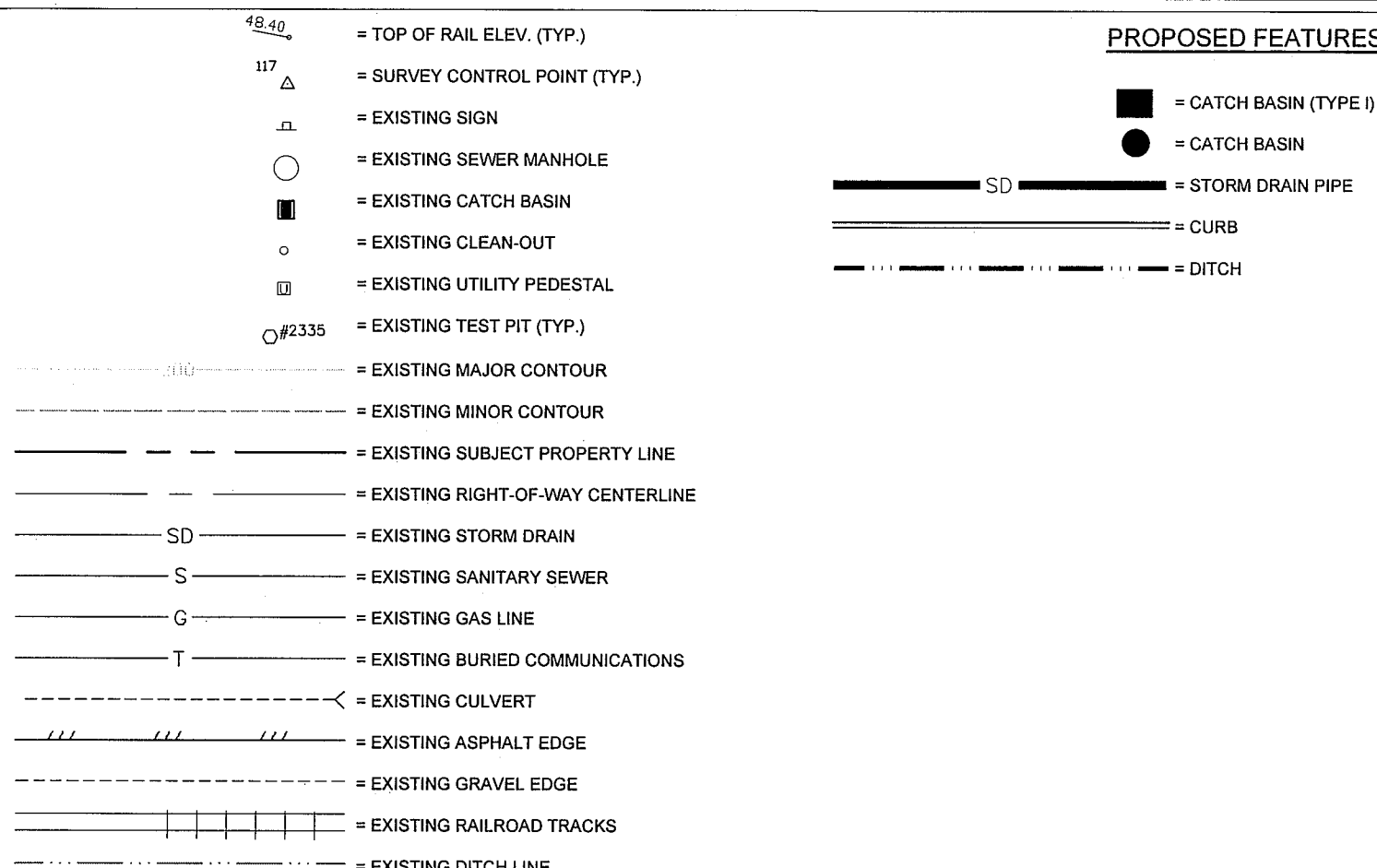
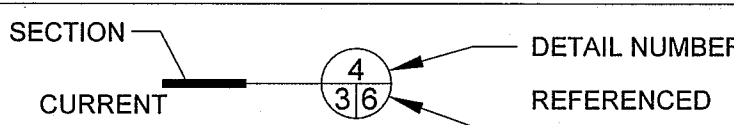
PREPARED FOR:
REPUBLIC SERVICES, INCORPORATED
1800 127TH AVENUE NORTHEAST
BELLEVUE, WASHINGTON

SITE STORMWATER IMPROVEMENTS
FERNDALE INTERMODAL YARD
FERNDALE, WASHINGTON
TITLE SHEET,
SITE LOCATION MAP, AND
DRAWING INDEX

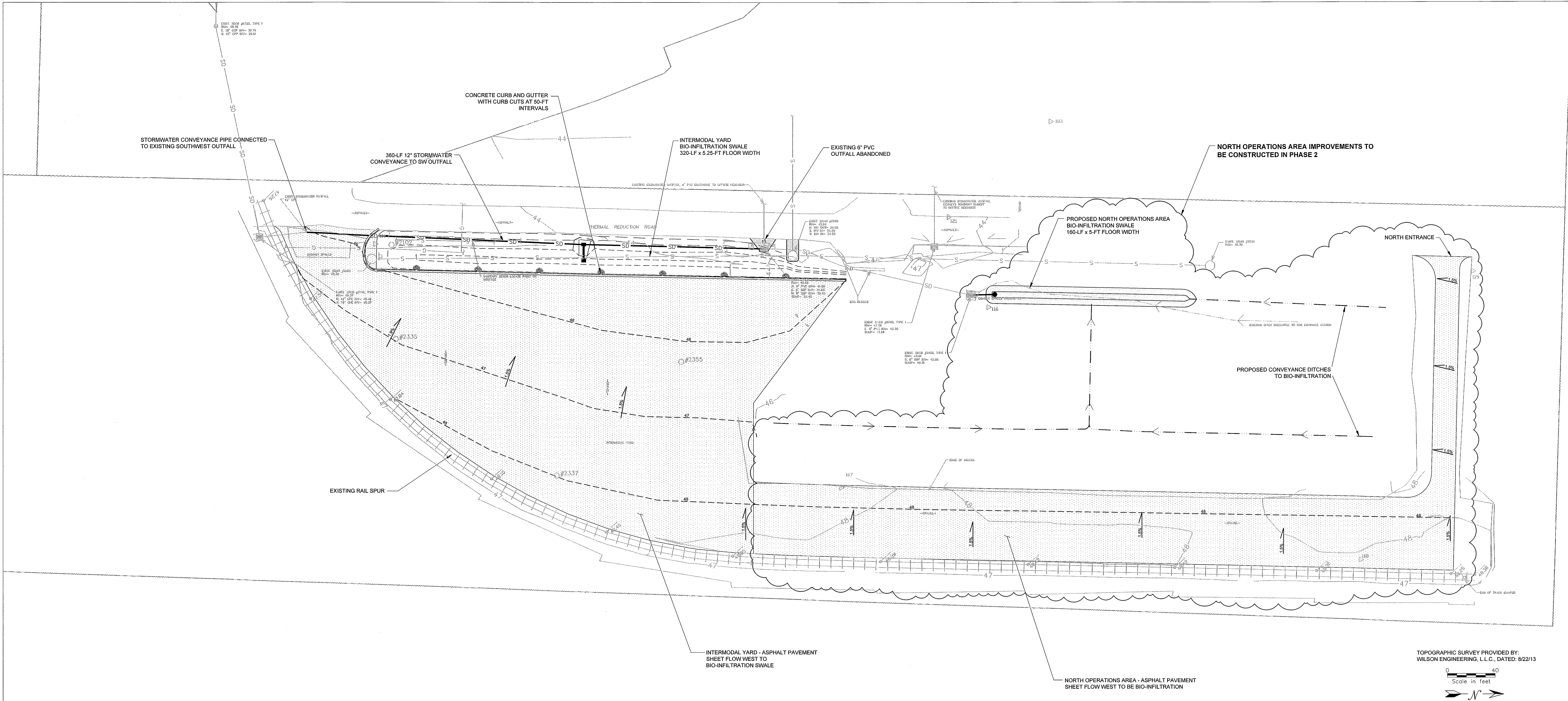
SCALE
AS SHOWN
SHEET NO.
1 OF 9

DATE	DESCRIPTION	BY	CHKD.	APP.
12/17/2013	AS-BUILT PHASE 1	DEW	RM	JH
11/8/13	REISSUED FOR PERMITTING	DEW	RM	JH
10/2/2013	ISSUED FOR PERMITTING	DEW	RM	JH

00557.001 1/6/14 SH

ELECTRICAL ABBREVIATIONS				STANDARD ABBREVIATIONS				PIPING, ELECTRICAL AND EQUIPMENT SYMBOLS			
A/AMP AC BD C CB CLG DC DIS DP DT EG E(OH) E(UG) EMER EPO EMT EXP FBO FLEX FRN GEN GFIC GND GRC HOA IRD HP HZ JB LFMC M MCC MCP NC NEC NEMA NF NO OL PBS PF PL PLC	AMP ALTERNATING CURRENT BUS DUCT CURRENT CIRCUIT BREAKER CEILING DIRECT CURRENT DISCONNECT DOUBLE POLE DOUBLE THROW ENCLOSED AND GASKETED ELECTRICAL (OVERHEAD) ELECTRICAL (UNDERGROUND) EMERGENCY EMERGENCY POWER OFF ELECTRICAL METALLIC TUBING EXPPOSED FURNISHED BY OTHERS FLEXIBLE METAL CONDUIT DUAL ELEMENT FUSE GENERATOR GROUND FAULT INTERRUPTER GROUND GALVANIZED RIGID CONDUIT HAND-OFF-AUTO SWITCH INFRARED DETECTOR HORSE POWER CYCLES PER SECOND JUNCTION BOX LIQUID TIGHT FLEXIBLE METAL CONDUIT MOTOR/MOTOR STARTER COIL MOTOR CONTROL CENTER MOTOR CIRCUIT PROTECTOR NORMALLY CLOSED NATIONAL ELECTRIC CODE NATIONAL ELECTRICAL MANUFACTURERS ASSOCIATION NON-FUSED NORMALLY OPEN OVERLOADS PUSHBUTTON POWER FACTOR PILOT LIGHT PROGRAMMABLE LOGIC CONTROLLER	AF AB AC APPROX AF AS BF B.G.S. BLDG BOP BV CONC CPLG C/CL CV DC DWG DP DPI EF EL/ELEV ELEC ELB EPDM EXIST/(E) EXP EW EA FC FO FLXC FM FL FT FUT FIN GR FE FNPT GA GAC GALV GI GPM GR GND GSKT GW GV	AIR FILTER AGGREGATE BASE ASPHALTIC CONCRETE APPROXIMATELY AIR FILTER AIR SPARGE BLIND FLANGE BUILDING BOTTOM OF PIPE BALL VALVE CONCRETE COUPLING CENTERLINE CONTROL VALVE/CHECK VALVE DOUBLE CONTAINED DIAMETER DRAWING DUAL PHASE DIFFERENTIAL PRESSURE INDICATOR EACH FACE ELEVATION ELECTRICAL ELBOW ETHYLENE PROPYLENE RUBBER EXISTING EXPANSION EACH WAY EACH FAIL CLOSE FAIL OPEN FLEXIBLE CONNECTION FLOW METER FLOW LINE FOOT FUTURE FINISHED GRADE FLANGED END FEMALE NATIONAL PIPE THREAD GAUGE GRANULAR ACTIVATED CARBON GALVANIZED GALVANIZED IRON GALLONS PER MINUTE GRADE GROUND GASKET GROUNDWATER GATE VALVE	HDPE HORIZ HP HR HS HYD HOA ID IN INV IPS JT JB KO LSHH M MAX MH MJ MIN MISC MNPT MP MON.PORT MW NC NIC NO NO. N NTS NPDES OC OD OSHA OVHD #/LB PB PBF PC PCC PG PL PO P	HIGH DENSITY POLYETHYLENE HORIZONTAL HORSEPOWER/HIGH PRESSURE HOSE HYDRANT HAND OFF AUTOMATIC INSIDE DIAMETER INCHES INVERT IRON PIPE SIZE JOINT JUNCTION BOX KNOCK OUT LEVEL SWITCH MOTOR MAXIMUM MANHOLE MECHANICAL JOINT MINUTE/MINIMUM MISCELLANEOUS MALE NATIONAL PIPE THREAD METER PUMP MONITORING PORT MONITORING WELL NORMALLY CLOSED NOT IN CONTRACT NORMALLY OPEN NUMBER NEW NOT TO SCALE NATIONAL POLLUTION DISCHARGE ELIMINATION SYSTEM ON CENTER OUTSIDE DIAMETER OCCUPATIONAL SAFETY AND HEALTH ADMINISTRATION OVERHEAD POUND PULL BOX PROVIDED BY FARALLON PORTLAND CEMENT PORTLAND CEMENT CONCRETE PRESSURE GAS PROPERTY LINE/PIPE LINE PUMP OUT PRESSURE	PRV PSI PSIA PSIG PTW PVC PV PR PUE R RC REQ REF SCH SDR SECT SHT SPEC SQ STA STD STL SBO ST STR SS STL SVE SW TYP TOC TOS TOW UBC UGPS UTIL V VAC VAR VERT VP VRV W/O W/O WS	PRESSURE RELEASE VALVE POUNDS PER SQUARE INCH POUNDS PER SQUARE INCH, ABSOLUTE POUNDS PER SQUARE INCH, GAUGE PRESSURE TREATMENT POLYVINYL CHLORIDE PROCESS VARIABLE PAIR PUBLIC UTILITY EASEMENT RADIUS/RISER REINFORCED CONCRETE REQUIRED REFERENCE SCHEDULE STANDARD DIMENSION RATIO SECTION SHEET SPECIFICATION SQUARE STATION STANDARD STEEL SUPPLIED BY OWNER SAMPLE TAP STRAINER STAINLESS STEEL STEEL SOIL VAPOR EXTRACTION SWITCH				
LEGEND				GENERAL NOTES							
				<p>1. A COPY OF THE PROJECT DESIGN DRAWINGS AND SPECIFICATIONS SHALL BE MAINTAINED ON THE JOB SITE AT ALL TIMES.</p> <p>2. COPIES OF ALL PERMITS SHALL BE MAINTAINED ON THE JOB SITE AT ALL TIMES. THE CONTRACTOR SHALL COMPLY WITH ALL PERMIT REQUIREMENTS.</p> <p>3. CONTRACTOR SHALL BE RESPONSIBLE FOR VERIFYING ALL DIMENSIONS.</p> <p>4. BURIED UTILITIES SHOWN ON THE DRAWINGS ARE FOR GENERAL INFORMATION ONLY. UTILITY LOCATIONS ARE APPROXIMATE AND MAY NOT BE INCLUSIVE OF ALL UTILITIES THAT EXIST ON THE PROPERTY.</p> <p>5. THE CONTRACTOR SHALL HAVE A PRIVATE UTILITY LOCATE SERVICE VERIFY ALL UTILITIES AND MARK THEIR LOCATIONS ON THE GROUND PRIOR TO STARTING CONSTRUCTION. FARALLON SHALL BE CONTACTED IMMEDIATELY IF A CONFLICT IS FOUND BETWEEN EXISTING UTILITIES AND THE PROJECT DESIGN.</p> <p>6. FARALLON SHALL BE NOTIFIED OF DISCREPANCIES BETWEEN CONTRACT DRAWINGS AND ACTUAL SITE CONDITIONS.</p> <p>7. THE CONTRACTOR SHALL ASSUME RESPONSIBILITY FOR THE JOB SITE CONDITIONS AND ENSURE THE SAFETY OF ALL PERSONS AND PROPERTY FOR THE DURATION OF ON SITE PROJECT WORK. THE CONTRACTOR SHALL PROTECT STRUCTURES, UTILITIES, AND PAVING FROM DAMAGE, DIRECT OR INDIRECT, RESULTING FROM THE WORK. THIS REQUIREMENT SHALL APPLY CONTINUOUSLY OVER THE DURATION OF ON SITE ACTIVITIES AND NOT BE LIMITED TO NORMAL WORKING HOURS.</p> <p>8. ALL EXCAVATIONS SHALL BE PERFORMED IN STRICT ACCORDANCE WITH APPLICABLE U.S. DEPARTMENT OF LABOR OCCUPATIONAL SAFETY AND HEALTH ADMINISTRATION (OSHA) AND THE WASHINGTON INDUSTRIAL SAFETY AND HEALTH ACT (WISHA) REGULATIONS. THE CONTRACTOR ASSUMES FULL RESPONSIBILITY FOR THE SAFETY OF ALL CONSTRUCTION OPERATIONS.</p> <p>9. NO TRENCHES SHALL BE LEFT OPEN WHEN WORK IS NOT IN PROGRESS. ALL OPEN EXCAVATIONS SHALL BE FENCED.</p>							
STANDARD SYMBOLS											
											

00557 - 003 11/14 SH



TOPOGRAPHIC SURVEY PROVIDED BY:
WILSON ENGINEERING, L.L.C., DATED: 8/22/13

0 20 40
Scale in feet

N

DATE	DESCRIPTION	BY	CHKD.	APP.
12/17/2013	AS-BUILT PHASE 1	DEW	RM	JH
11/8/13	REISSUED FOR PERMITTING	DEW	RM	JH
10/2/2013	ISSUED FOR PERMITTING	DEW	RM	JH

CALL
TWO BUSINESS DAYS
BEFORE YOU DIG
1-800-424-5555
UTILITIES UNDERGROUND LOCATION CENTER



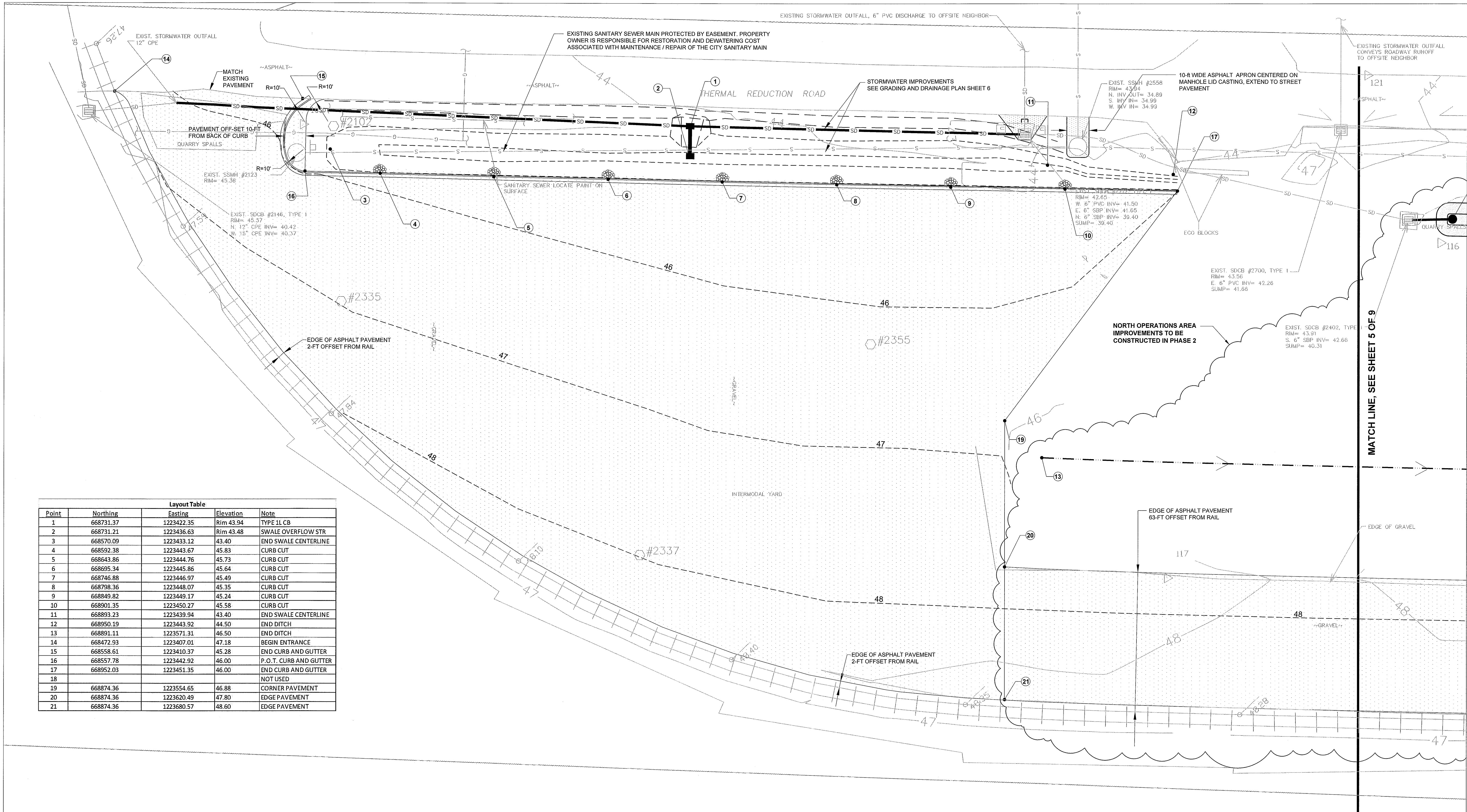
APPROVED

JAN 03 2014

BY *J. M. G.* P.E.

CITY OF FERDALE

PREPARED BY FARALLON CONSULTING, L.L.C. 875 5th Avenue Northwest Issaquah, WA 98027	PREPARED FOR: REPUBLIC SERVICES, INCORPORATED 1600 127TH AVENUE NORTHEAST BELLEVUE, WASHINGTON	SITE STORMWATER IMPROVEMENTS FERDALE INTERMODAL YARD FERDALE, WASHINGTON SITE PLAN	SCALE: AS SHOWN PROJECT NO. FILE NAME ENCLOSURE SHEET NO. OF 3 9
--	---	---	--



Layout Table				
Point	Northing	Easting	Elevation	Note
1	668731.37	1223422.35	Rim 43.94	TYPE 11 CB
2	668731.21	1223436.63	Rim 43.48	SWALE OVERFLOW STR
3	668570.09	1223433.12	43.40	END SWALE CENTERLINE
4	668592.38	1223443.67	45.83	CURB CUT
5	668643.86	1223444.76	45.73	CURB CUT
6	668695.34	1223445.86	45.64	CURB CUT
7	668746.88	1223446.97	45.49	CURB CUT
8	668798.36	1223448.07	45.35	CURB CUT
9	668849.82	1223449.17	45.24	CURB CUT
10	668901.35	1223450.27	45.58	CURB CUT
11	668893.23	1223439.94	43.40	END SWALE CENTERLINE
12	668950.19	1223443.92	44.50	END DITCH
13	668891.11	1223571.31	46.50	END DITCH
14	668472.93	1223407.01	47.18	BEGIN ENTRANCE
15	668558.61	1223410.37	45.28	END CURB AND GUTTER
16	668557.78	1223442.92	46.00	P.O.T. CURB AND GUTTER
17	668952.03	1223451.35	46.00	END CURB AND GUTTER
18				NOT USED
19	668874.36	1223554.65	46.88	CORNER PAVEMENT
20	668874.36	1223620.49	47.80	EDGE PAVEMENT
21	668874.36	1223680.57	48.60	EDGE PAVEMENT

DATE	DESCRIPTION	BY	CHKD.	APP.
12/17/2013	AS-BUILT PHASE 1	DEW	RM	JH
11/8/13	REISSUED FOR PERMITTING	DEW	RM	JH
10/2/2013	ISSUED FOR PERMITTING	DEW	RM	JH

CALL
TWO BUSINESS DAYS
BEFORE YOU DIG
1-800-424-5555
UTILITIES UNDERGROUND LOCATION CENTER



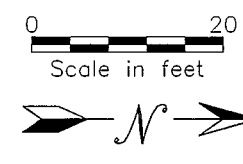
PREPARED BY
FARALLON CONSULTING, L.L.C.
1600 127TH AVENUE NORTHEAST
BELLEVUE, WASHINGTON 98007

REPUBLIC SERVICES, INCORPORATED
1600 127TH AVENUE NORTHEAST
BELLEVUE, WASHINGTON

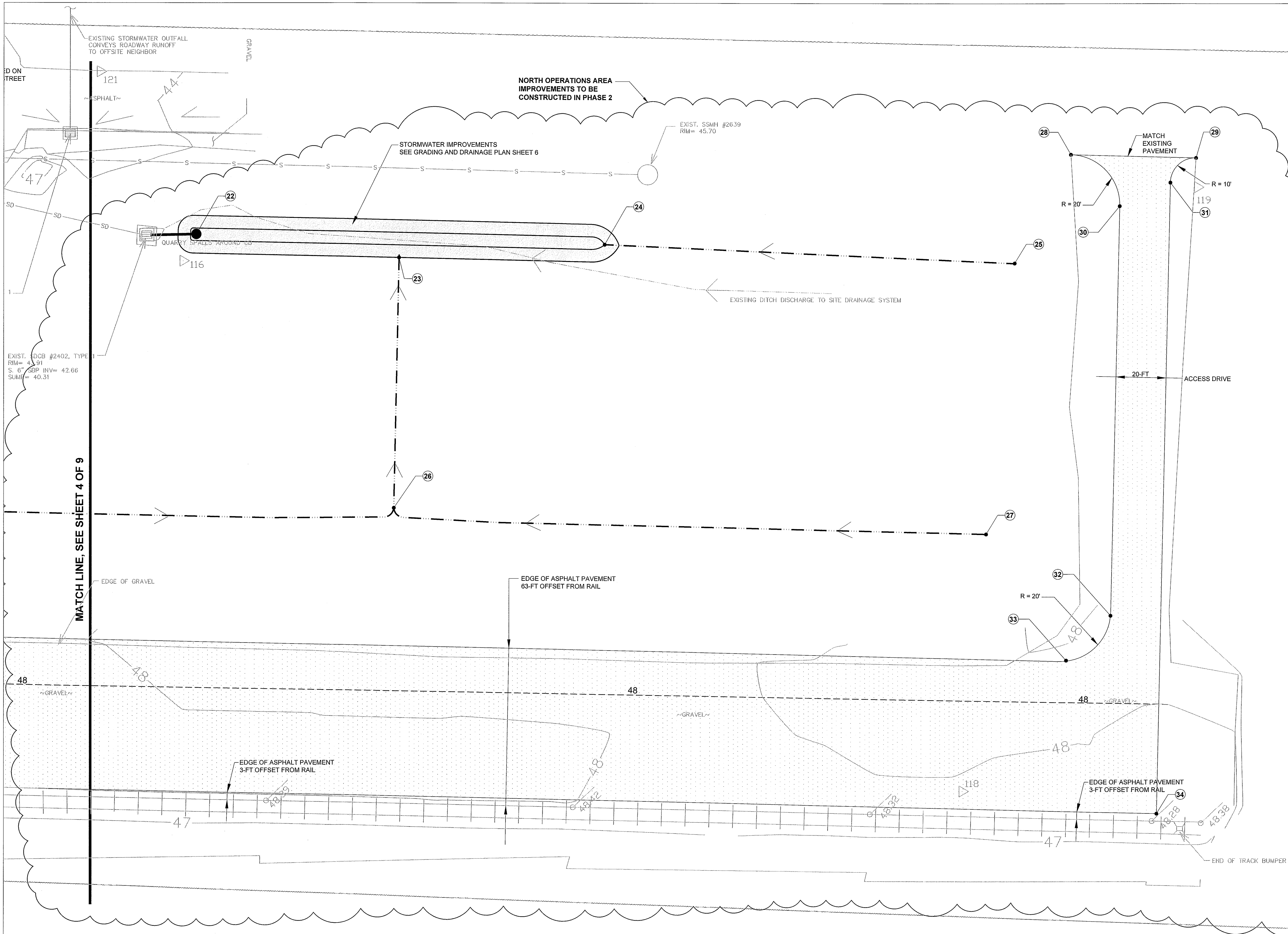
SITE STORMWATER IMPROVEMENTS
FERDALE INTERMODAL YARD
FERDALE, WASHINGTON

LAYOUT PLAN SOUTH
SHEET NO. 4 OF 9

APPROVED
JAN 03 2014
BY *J. H. G.* P.E.
CITY OF FERDALE



00557.004 16114 SH



Layout Table				
Point	Northing	Easting	Elevation	Note
22	669075.27	1223464.06	Rim 42.90	SWALE OVERFLOW STR
23	669157.00	1223473.52	42.90	END DITCH
24	669238.75	1223467.77	42.70	END SWALE CENTERLINE
25	669403.10	1223475.51	44.20	END DITCH
26	669154.99	1223574.15	44.10	CONFLUENCE DITCH
27	669391.97	1223583.25	46.00	END DITCH
28	669425.33	1223432.20	MATCH EX	BEGIN ENTRANCE
29	669475.15	1223433.47	MATCH EX	END ENTRANCE
30	669444.79	1223452.62	45.20	P.O.T.
31	669464.99	1223443.25	45.50	P.O.T.
32	669441.33	1223614.42	47.50	P.O.T.
33	669420.83	1223633.98	47.70	P.O.T.
34	669459.61	1223694.89	48.60	CORNER PAVEMENT

12/17/2013	AS-BUILT PHASE 1	DEW	RM	JH	
11/8/13	REISSUED FOR PERMITTING	DEW	RM	JH	
10/22/2013	ISSUED FOR PERMITTING	DEW	RM	JH	
DATE	DESCRIPTION	BY	CKD.	APP.	

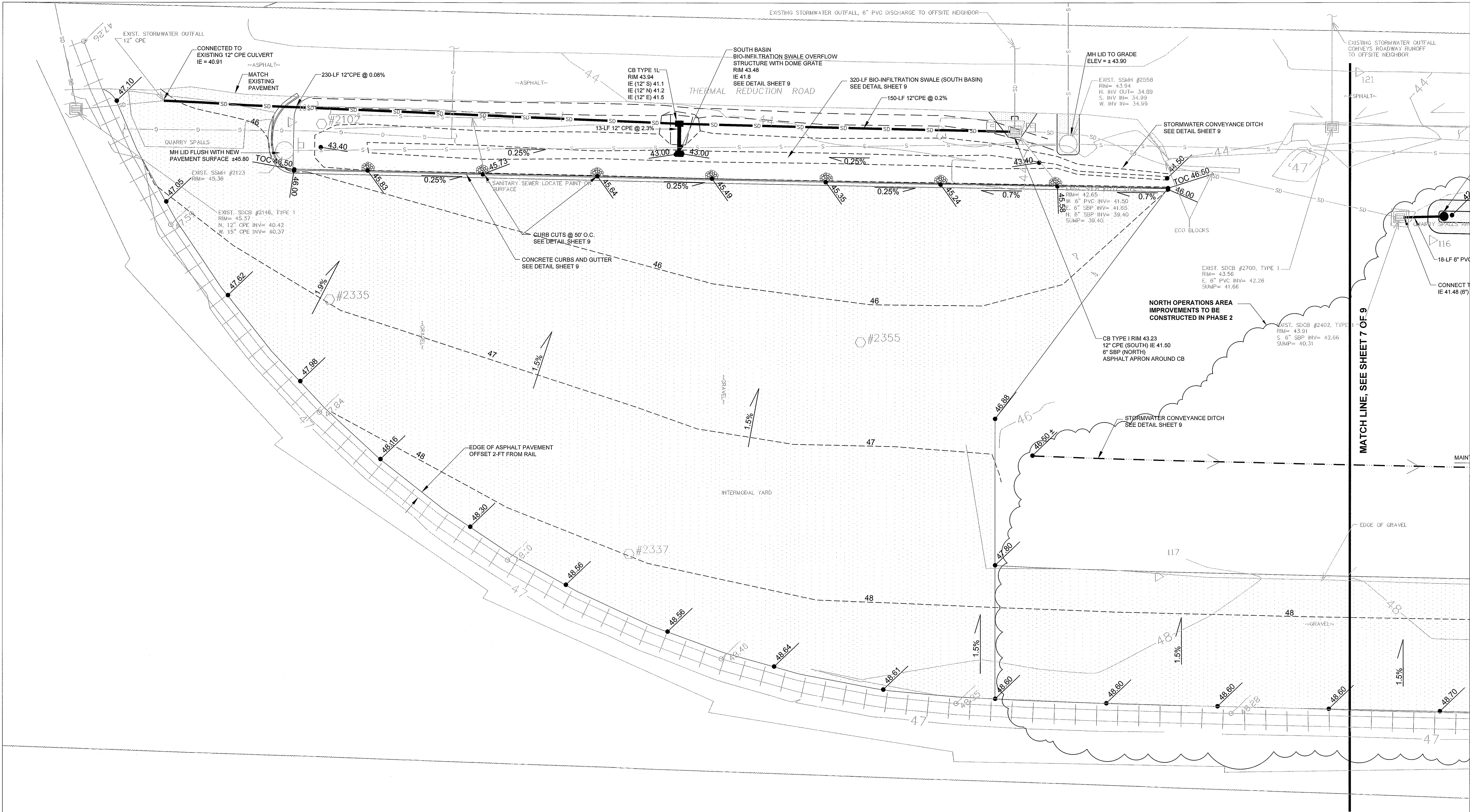
CALL
TWO BUSINESS DAYS
BEFORE YOU DIG.
1-800-424-5555
UTILITIES UNDERGROUND LOCATION CENTER



APPROVED
JAN 03 2014
BY *[Signature]* P.E.
CITY OF FERDALE

PREPARED BY FARALLON CONSULTING L.L.C. 975 8th Avenue Northwest Issaquah, WA 98027	PREPARED FOR: REPUBLIC SERVICES, INCORPORATED 1600 127TH AVENUE NORTHEAST BELLEVUE, WASHINGTON	SITE STORMWATER IMPROVEMENTS FERDALE INTERMODAL YARD FERDALE, WASHINGTON LAYOUT PLAN NORTH (PHASE 2 CONSTRUCTION)	SCALE 1"=25'-0" 11/23/2013 FILE NAME 20130920.dwg SHEET NO. OF 5 9
---	---	---	--

00557.005 11/01/14 CH

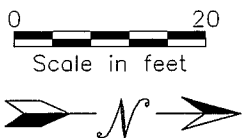


12/17/2013	AS-BUILT PHASE 1	DEW	RM	JH
11/8/13	ISSUED FOR PERMITTING	DEW	RM	JH
10/2/2013	ISSUED FOR PERMITTING	DEW	RM	JH
DATE	DESCRIPTION	BY	CHKD.	APP.

CALL
TWO BUSINESS DAYS
BEFORE YOU DIG
1-800-424-5555
UTILITIES UNDERGROUND LOCATION CENTER

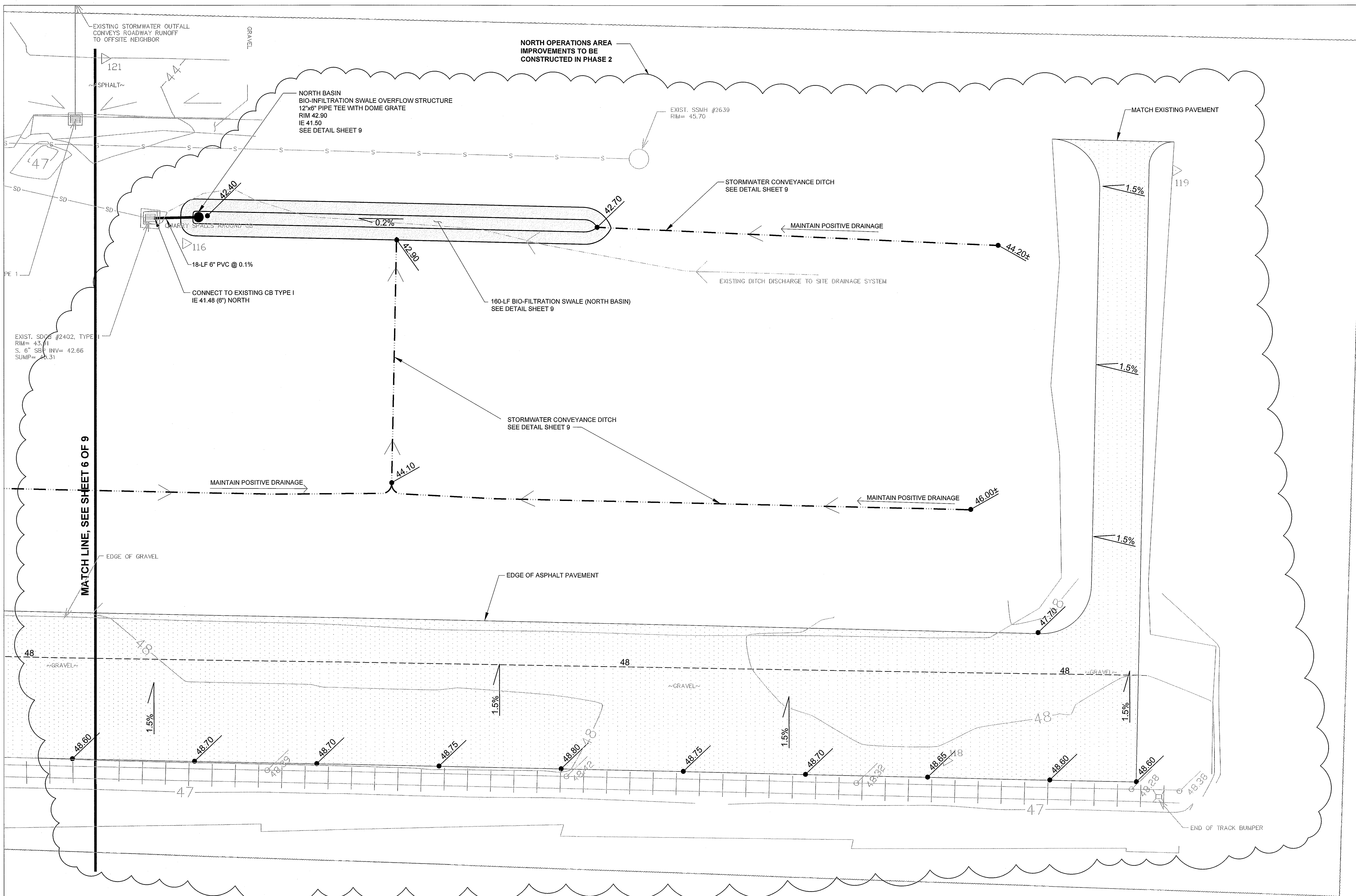


APPROVED
JAN 03 2014
BY *[Signature]* P.E.
CITY OF FERNDALE



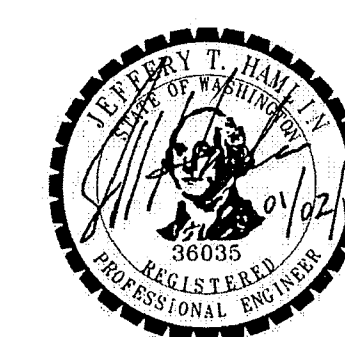
PREPARED BY FARALLON CONSULTING L.L.C. 972 20th Avenue Northwest Issaquah, WA 98027	PREPARED FOR: REPUBLIC SERVICES, INCORPORATED 1600 127TH AVENUE NORTHEAST BELLEVUE, WASHINGTON	SITE STORMWATER IMPROVEMENTS FERNDAL INTERMODAL YARD FERNDAL, WASHINGTON GRADING AND DRAINAGE PLAN SOUTH	SHEET NO. 122601 SHEET NO. OF 6 9
--	---	--	--

HS 11/14 906 00555.000




BY J. H. [Signature], P.E.
CITY OF FERNDALE

CALL
TWO BUSINESS DAYS
BEFORE YOU DIG
1-800-424-5555
UTILITIES UNDERGROUND LOCATION CENTER



PREPARED BY



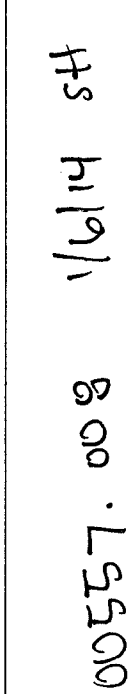
FARALLON CONSULTING L.L.C.
975 5th Avenue Northwest
Issaquah, WA 98027

L.C.	<p>PREPARED FOR:</p> <p>REPUBLIC SERVICES, INCORPORATE 1600 127TH AVENUE NORTHEAST BELLEVUE, WASHINGTON</p>
------	---


ED SITE STORMWATER IMPROVEMENT
FERNDALDE INTERMODAL YARD
FERNDALDE, WASHINGTON
GRADING AND DRAINAGE
PLAN NORTH
(PHASE 2 CONSTRUCTION)

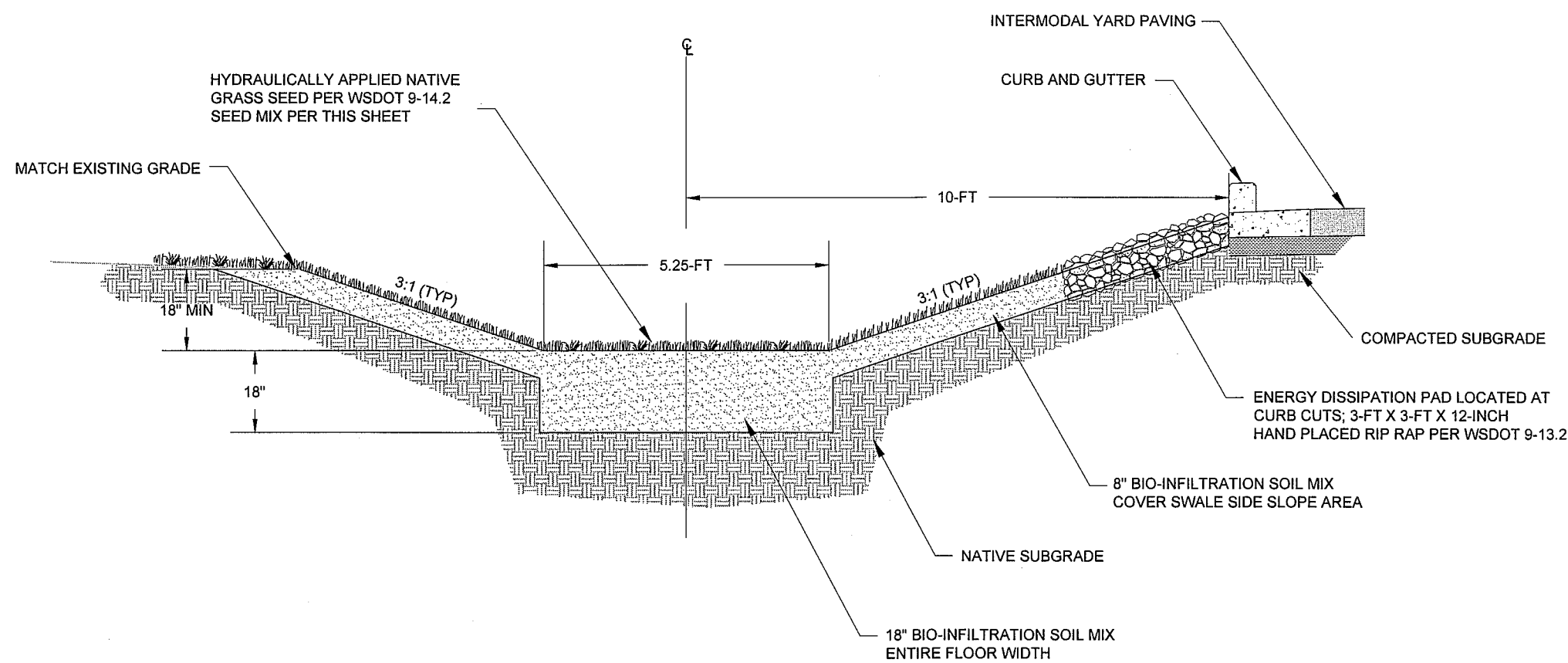
S	SCALE AS SHOWN	
	PROJECT NO. 1143-001	
	FILE NAME EXCAVATION.dwg	
	SHEET NO.	OF
	7	9

[illegible]



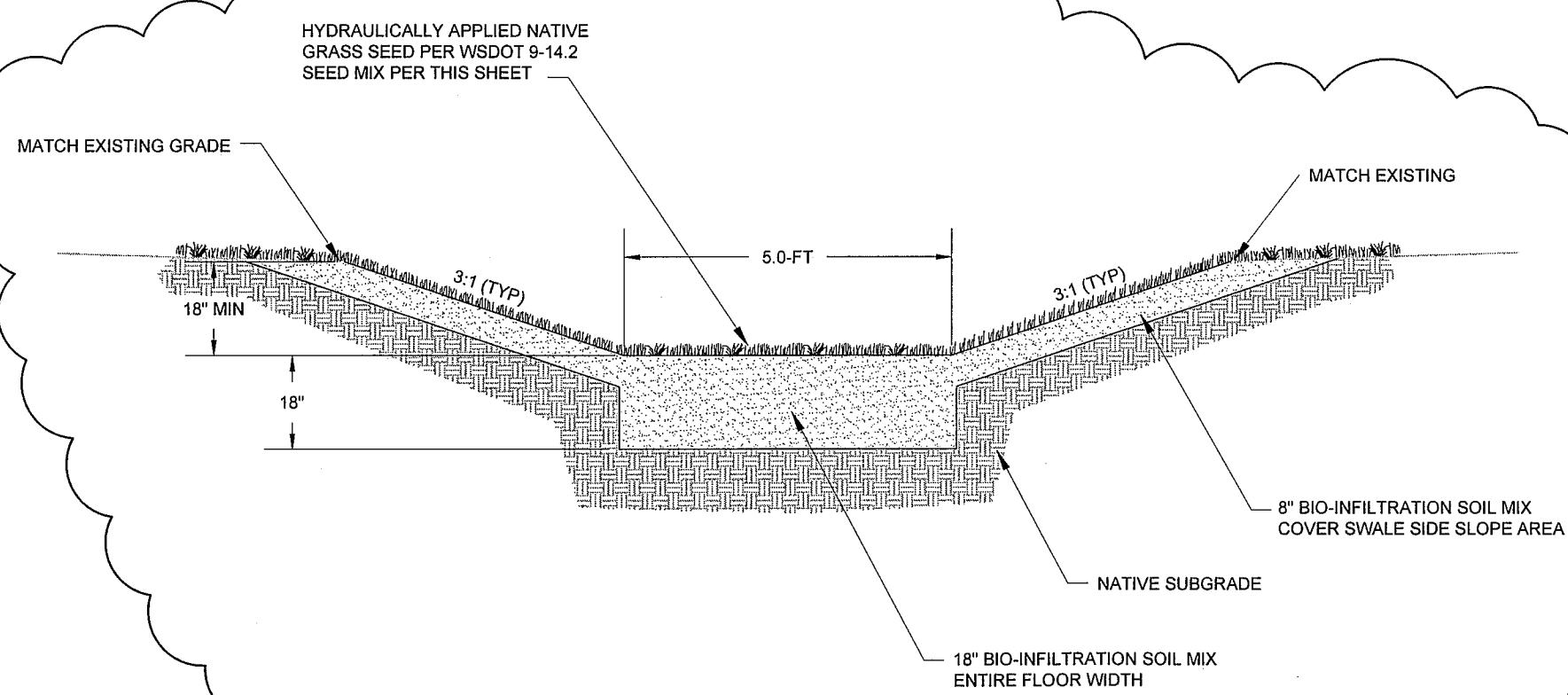
- OVERFLOW (TO BYPASS
PEAK STORM VOLUMES)
PRE-MANUFACTURED CATCH
BASIN OR INLET INSERT

PREPARED BY  FARALLON CONSULTING L.L.C. 975 515 Avenue Northwest Issaquah, WA 98027	PREPARED FOR: REPUBLIC SERVICES, INCORPORATED 1600 127TH AVENUE NORTHEAST BELLEVUE, WASHINGTON	SITE STORMWATER IMPROVEMENTS FERNDALE INTERMEDIATE YARD FERNDALE, WASHINGTON	SCALE: AS SHOWN PROJECT NO. 114262
	TEMPORARY, EROSION, AND SEDIMENT CONTROL PLAN		FILE NAME ESWATCHDOG.dwg SHEET NO. OF <div style="display: flex; justify-content: space-around; width: 100%;"> 8 9 </div>



BIO-INFILTRATION SWALE TYPICAL SECTION - SOUTH BASIN
NOT TO SCALE

TO BE CONSTRUCTED IN
PHASE 2



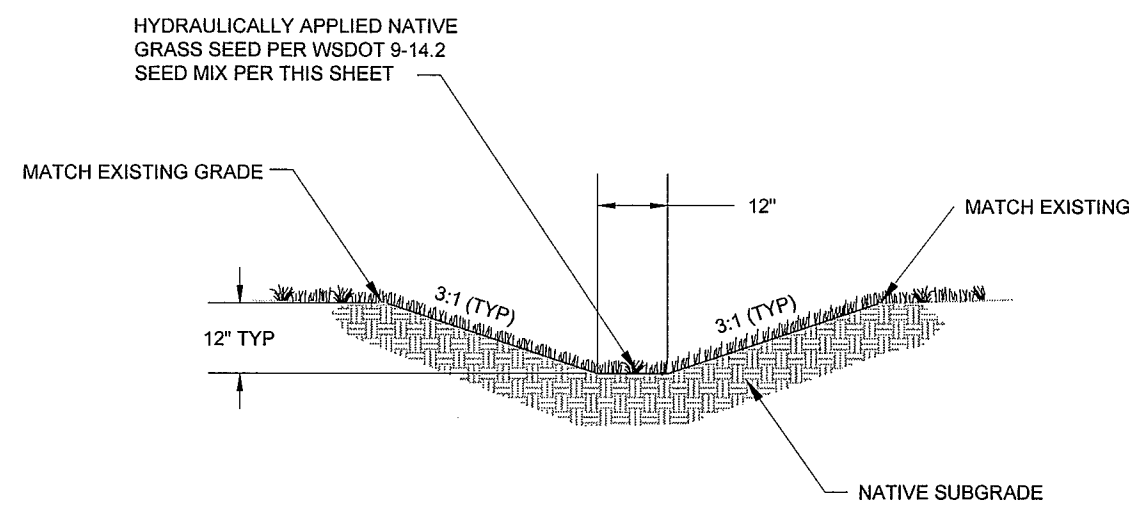
BIO-INFILTRATION SWALE TYPICAL SECTION - NORTH BASIN
NOT TO SCALE

BIO-INFILTRATION SWALE SEED MIX*			
	% Weight	% Purity	% Germination
Tall or meadow fescue	75-80	98	90
<i>Festuca arundinacea</i> or <i>Festuca elatior</i>			
Seaside/Creeping bentgrass	10-15	92	85
<i>Agrostis palustris</i>			
Redtop bentgrass	5-10	90	80
<i>Agrostis alba</i> or <i>Agrostis gigantea</i>			

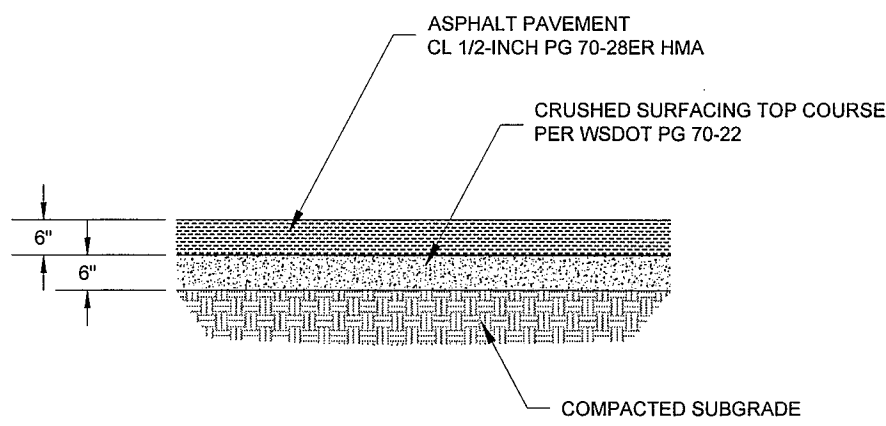
* Modified Briargreen, Inc. Hydroseeding Guide Wetlands Seed Mix

CONSTRUCTION NOTES

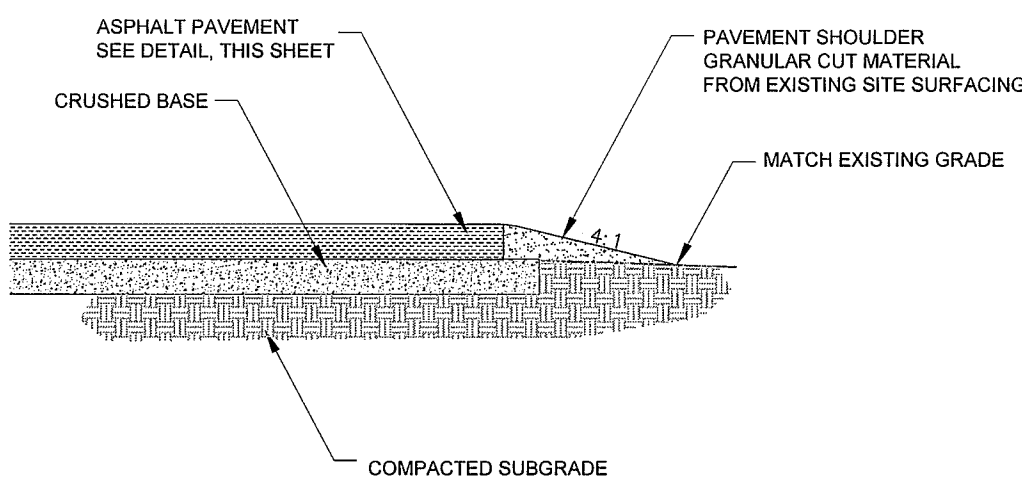
- BEDDING OF STORM SEWER PIPE SHALL BE PEA GRAVEL, WITH A MINIMUM DEPTH OF 4-INCHES UNDER AND 12-INCHES OVER THE PIPE FOR ALL SERVICES INSTALLED WITHIN CITY RIGHT-OF-WAY CONSISTENT WITH CITY OF FERNDALE DRAWING ST-17.
- GROUT AND GROUTING OF DRAINAGE STRUCTURES SHALL INCLUDE GROUT MIXTURE PER WSDOT STANDARD 9-04.3, AND CONSTRUCTION REQUIREMENTS PER WSDOT STANDARD 7-05.3
- ALL OPENINGS CUT THROUGH AND/OR IN STRUCTURES SHALL BE GROUTED FROM THE INSIDE AND THE OUTSIDE TO PROVIDE A WATERTIGHT SEAL.
- GROUT SHALL BE PLACED BETWEEN ALL ADJUSTMENT RISERS EXCEPT WHERE RUBBER GASKET JOINTS PROVIDE A WATERTIGHT SEAL. BACKFILL AROUND GROUT WORK SHALL BE COMPLETED ONLY AFTER THE CONCRETE HAS THOROUGHLY SET.
- PIPE TRENCH WIDTH SHALL INCLUDE A MINIMUM CLEARANCE OF 13-INCHES ON BOTH SIDES OF PIPE.
- CONTRACTOR SHALL KEEP AN APPROVED SET OF PLANS ONSITE AT ALL TIMES.
- EMERGENCY WATERLINE SHUTDOWNS: CONTACT (360) 384-4006.
- UTILITY LOCATES NUMBER: 1-800-424-5555, REQUIRED PER RCW 19.122
- NOTIFY ENGINEER OF RECORD IF SUB-SURFACE RUNOFF IS FOUND TO EXIST.



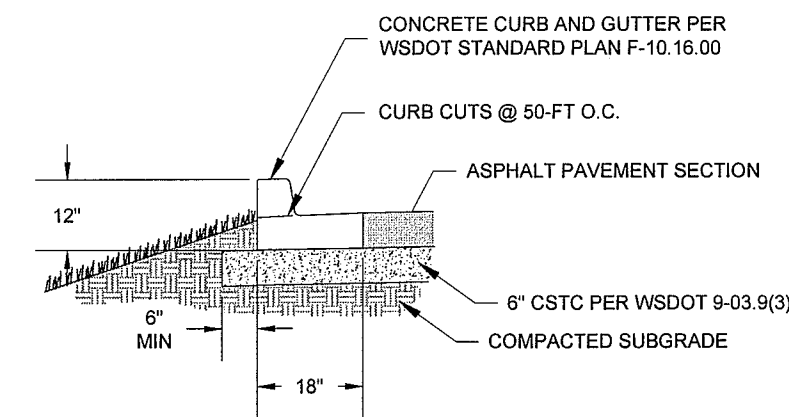
CONVEYANCE DITCH SECTION (TYP)
NOT TO SCALE



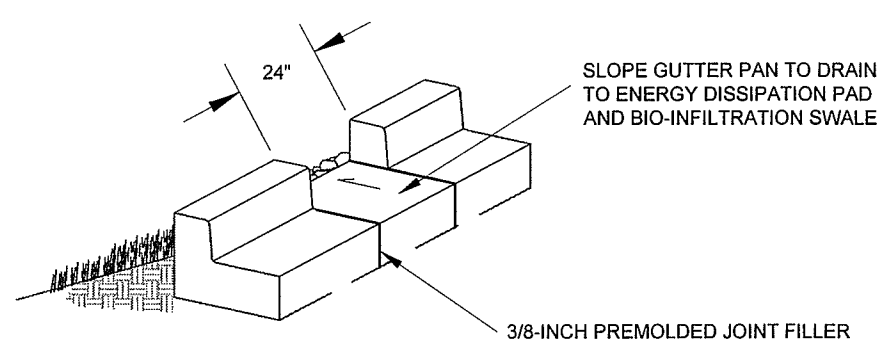
ASPHALT PAVEMENT SECTION (TYP)
NOT TO SCALE



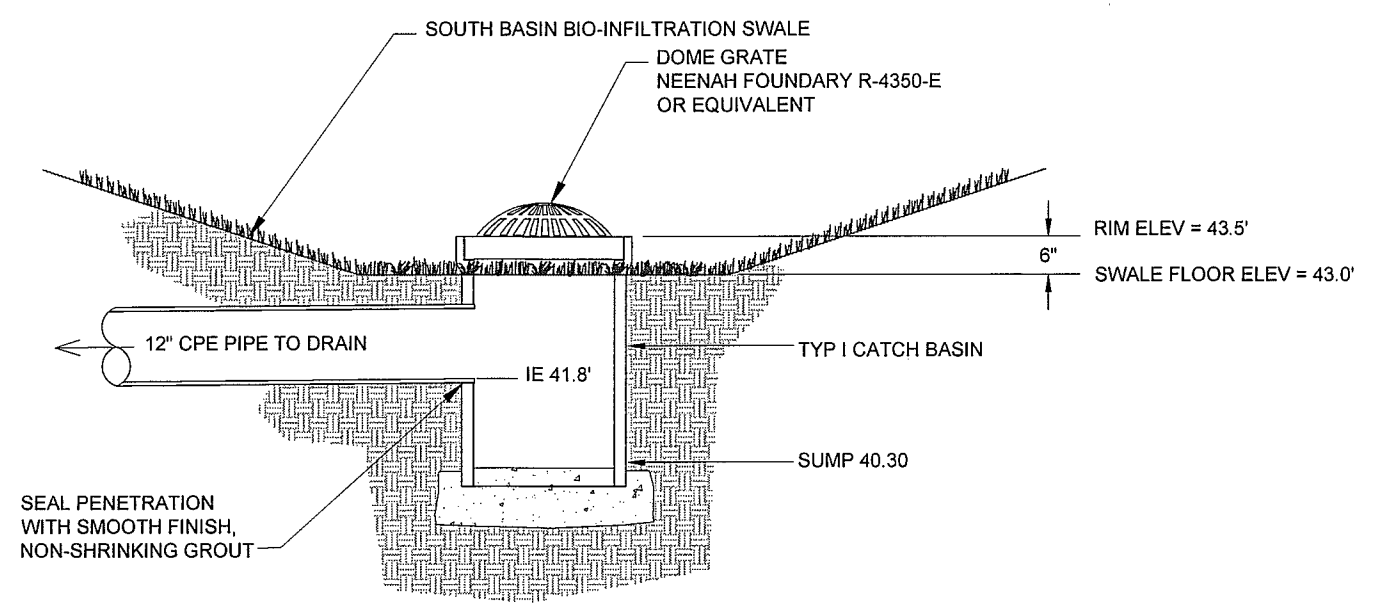
PAVEMENT SHOULDER SECTION (TYP)
NOT TO SCALE



CONCRETE CURB AND GUTTER (TYP)
NOT TO SCALE

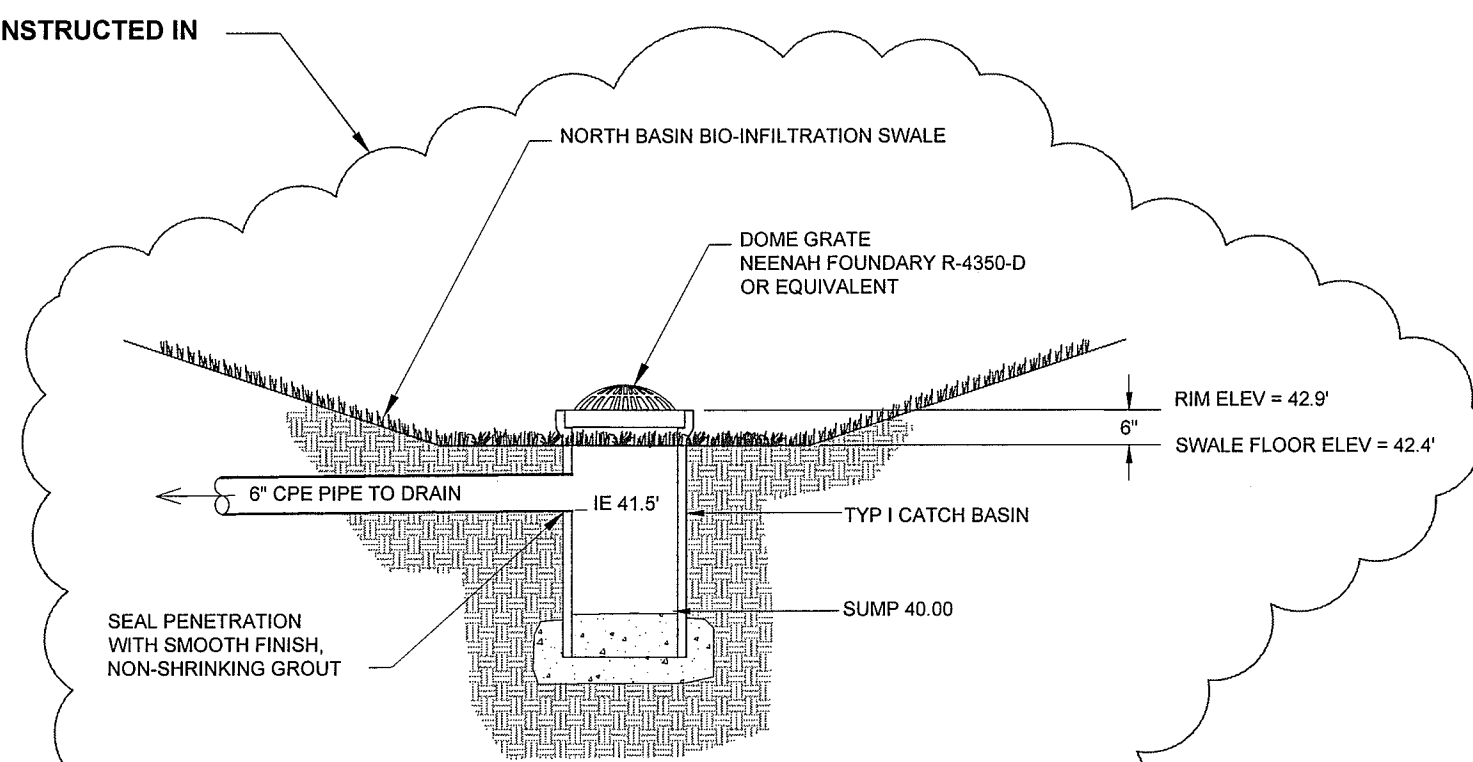


CURB CUT - ISOMETRIC
NOT TO SCALE



SOUTH BASIN BIO-INFILTRATION OVERFLOW STRUCTURE
NOT TO SCALE

TO BE CONSTRUCTED IN
PHASE 2



NORTH BASIN BIO-INFILTRATION OVERFLOW STRUCTURE
NOT TO SCALE

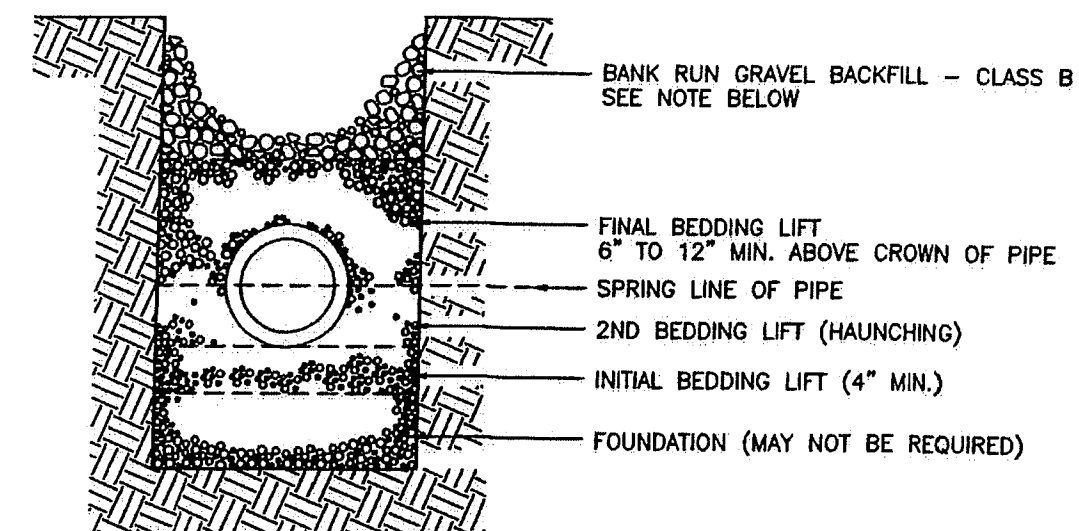
THE FOLLOWING SUPPLEMENTAL SPECIFICATIONS ARE TO BE USED IN CONJUNCTION WITH THE STANDARD SPECIFICATIONS FOR ROAD, BRIDGE AND MUNICIPAL CONSTRUCTION, CURRENT EDITION:

BEDDING FOR SEWERS, DRAINS AND CULVERTS FOR PVC PIPE-
BEDDING MATERIAL FOR PVC PIPE SHALL BE PEA GRAVEL CONFORMING THE FOLLOWING SPECIFICATIONS

PEA GRAVEL - PEA GRAVEL BEDDING SHALL BE A CLEAN MIXTURE FREE FROM ORGANIC MATTER AND CONFORMING TO THE FOLLOWING GRADATION WHEN TESTED IN ACCORDANCE WITH ASTM D422:

U.S. STANDARD SIEVE SIZE	PERCENTAGE PASSING, BY WT.
3/4"	100
3/8"	95-100
#10	0-10
#200	0-3

BACKFILL - WHENEVER A TRENCH IS EXCAVATED IN THE EXISTING OR PROPOSED ROADWAY, SIDEWALK OR OTHER AREAS WHERE SETTLEMENT WOULD BE DETRIMENTAL, THE ENTIRE TRENCH SHALL BE BACKFILLED WITH IMPORTED GRAVEL AND COMPACTED TO 95% OF MAXIMUM DENSITY.



DETAIL ST-17 BEDDING SPECIFICATIONS FOR PIPE STANDARD
NOT TO SCALE

APPROVED

JAN 03 2014

BY *J. H. G. P.E.*
CITY OF FERNDALE

DATE	DESCRIPTION	BY	CKD.	APP.
12/17/2013	AS-BUILT PHASE 1	DEW	RM	JH
11/8/13	REISSUED FOR PERMITTING	DEW	RM	JH
10/2/2013	ISSUED FOR PERMITTING	DEW	RM	JH

CALL
TWO BUSINESS DAYS
BEFORE YOU DIG
1-800-424-5555
UTILITIES UNDERGROUND LOCATION CENTER



PREPARED BY	PREPARED FOR:	SITE STORMWATER IMPROVEMENTS	SCALE
FARALLON CONSULTING, L.L.C. 972 300 Avenue Northwest Issaquah, WA 98027	REPUBLIC SERVICES, INCORPORATED 1600 127TH AVENUE NORTHEAST BELLEVUE, WASHINGTON	FERNDALDE INTERMODAL YARD FERNDALDE, WASHINGTON	AS SHOWN 1"=20'
		DETAILS	
			FILE NAME 11/18/2013 11/18/2013 11/18/2013 SHEET NO. OF 9 9

1/6/14
00557.009
15